

CIRCULAR DESIGN - REDUCE - REUSE - RECYCLE - WASTE - RESPONSIBLE RESOURCES - REFORESTATION - CRAFT MASTERSHIP - TRANSPARENCY - EFFICIENT ENERGY - ENVIRONMENTAL AWARENESS - SUSTAINABILITY

mater
Circular since 2006

Mater



Mater means *mother* in latin

About

Circular since 2006	4
Our Materials	10
The Sustainable Development Goals	12

News

Ocean Collection	16
Nova Sea Chair	26
News from Space Copenhagen	36
Earth Stool & Earth Stool Backrest	48
Mask Stool	58

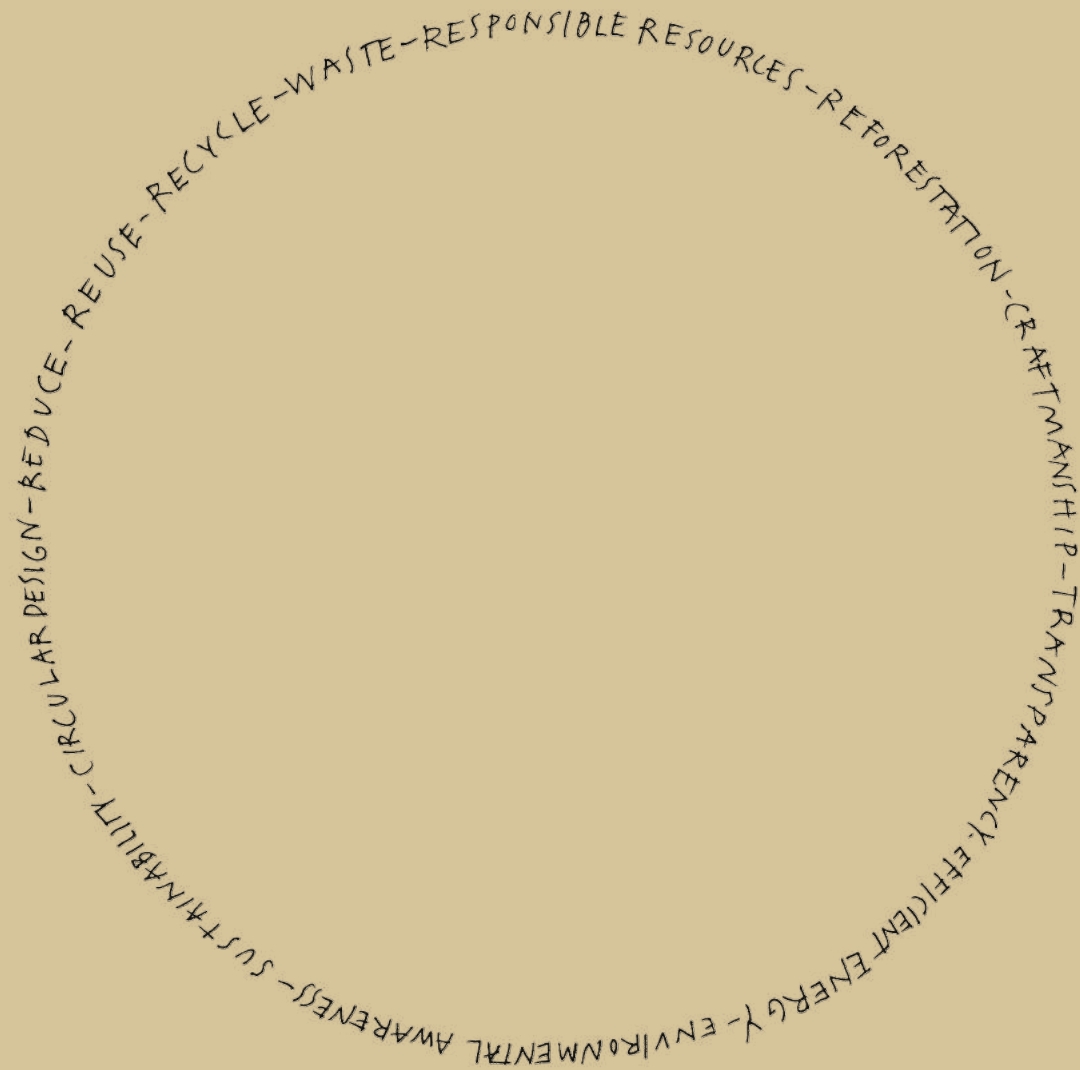
Mater Collection

Outdoor Furniture	67
Furniture	71
Lighting	83
Objects	89
Material overview	93
Designers	99
Contact	101

Circular since 2006

Founded in Copenhagen in 2006, Mater was created to be the pioneering global brand with sustainability embedded in its core.

From the very beginning the ambition was to inspire a global design audience and engage people into sustainable thinking. Mater combines sustainability and circular production using waste, with timeless design, through collaboration with an external base of well-established and new design talents.



Together we are committed

After years of research for more sustainable ways to create furniture, lighting and objects we now work with a range of production partners with the same ambition as us, creating partnerships for change and supporting the United Nations Sustainable Development Goals.

Together we are committed to searching for new and better ways of making beautiful design - in a responsible way.

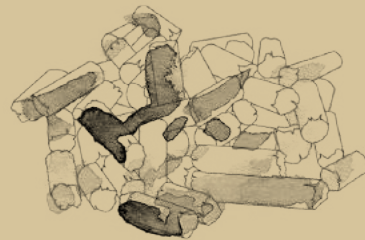




Our Materials

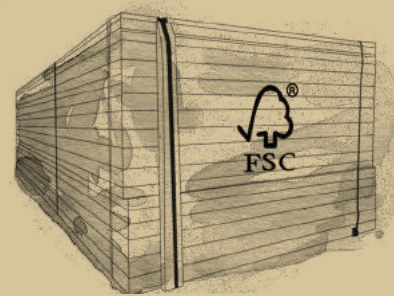
Every material we use is a tribute to sustainable thinking.

Maters foundation and first pioneering steps towards creating timeless sustainable furniture design started in 2006 - and have since then expanded to a wider palette of upcycled and innovative circular materials continually pushing the boundaries of exploring new materials.



Industrial plastic waste

Most of our industrial plastic waste comes for large danish corporations, such as plastic waste from production of insulin pens from global diabetes leader - Novo Nordisk.



FSC certified wood

All wooden products in our collection have always been made from FSC certified wood. In an FSC-certified forest no more trees than the forest can reproduce are felled, so the exploitation of nature is avoided. FSC ensures fair wages and a fair trading price and gives full tracability from product to forest.



Upcycled mango wood

When the tree ends it's productive life as a fruit tree a new one is automatically planted. Instead of low value usage such as burning it, the wood is upcycled, to provide income for the struggling wood-working craft. All our mango wood is FSC certified.



Coffee shell waste

Coffee shell waste is a bi-product from coffee bean roasting. Together with BK1 Coffee, one the largest coffee roasteries in Denmark, we use this fibre-based waste for several of our shell chairs.



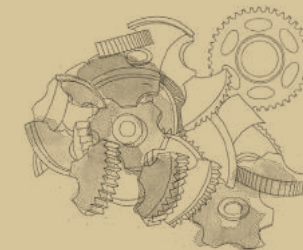
Discarded fishing nets

Old fishing nets from the ocean is collected, washed, shredded and made into pellets also called 'green plastic'. The ocean waste is used both in our outdoor series and injection moulded chairs.



Spent grain waste

Spent grain waste is a bi-product from the Danish brewery Carlsberg's beer production that we use in several of our new circular products.



Upcycled aluminum

Old pipes, tubes and other aluminum waste is melted and used for several of our sand casted products. A way of upcycling low value scrap into beautiful design pieces.

We are comitted to

The Sustainable Development Goals

At Mater we align our sustainable values with The United Nations Global Goals for sustainable development - a framework agreed by 193 nations, organized into 17 Sustainable Development Goals to improve our planet and living conditions towards 2023. Today we support eight of them with our collection.



All our lighting is made of materials with sustainable elements - from recycled aluminum to certified wood. The newest LED technology is embedded in all our lighting as this is the most sustainable source of lighting to help save energy.



Through our code of conduct we make sure that we work towards better standards - safe working conditions, fair wages, fair price and following local environmental standards.



We bring new innovative production techniques into the furniture business, upcycling industrial waste, and by mid 2021 we have invested in a revolutionary circular production facility for large scale production.



Sustainable consumption is about doing better with less. With our circular waste production we support a consumption driven change, the more we sell the more waste we remove.



Using circular and upcycled materials in our design supports a reduction of carbon emissions. An example is the Ocean Collection where one single Ocean Chair demonstrates up to 82% in carbon emission savings compared to virgin plastic.



Both our Ocean and Nova Sea collection is made of discharged fishing nets from the oceans. We are proud that these products contribute to reducing landfill, marine pollution and loss of valuable resources.

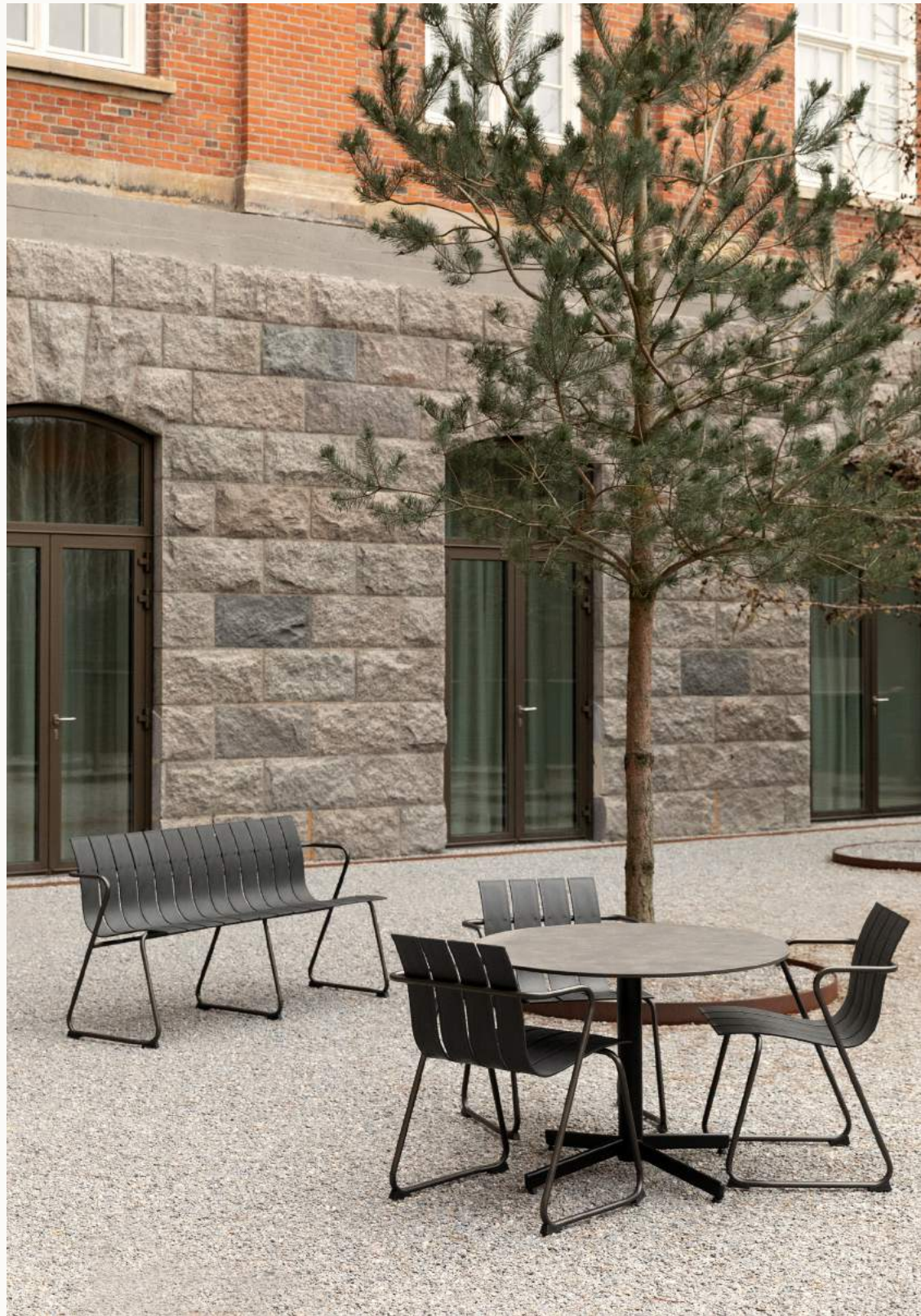


All our wooden products are FSC certified. In an FSC-certified forest no more trees than the forest can reproduce are felled, so the exploitation of nature is avoided. FSC insures fair pricing and fair wages as well as fair working conditions.



We work with a range of production partners with the same ambition as Mater - creating partnerships for change. Together we are committed to searching for new and better ways of making timeless design in a responsible way.

News



Ocean Bench p. 68 | Ocean Chair p. 68
Villa Copenhagen, Hotel - Copenhagen, Denmark



Ocean Collection

Designed by Joergen & Nanna Ditzel

Made from upcycled fishing nets

The Ocean collection was originally designed in 1955 by some of the 20th century's most renowned designers, Joergen and Nanna Ditzel. The design has now been created in ocean plastic waste. The series is characterized by its light structure with repeated slats and metal frames, made and tested for outdoor use. The Ocean collection is designed for disassembly, meaning that the design allows each component in its purest form to upcycle into new production circles.





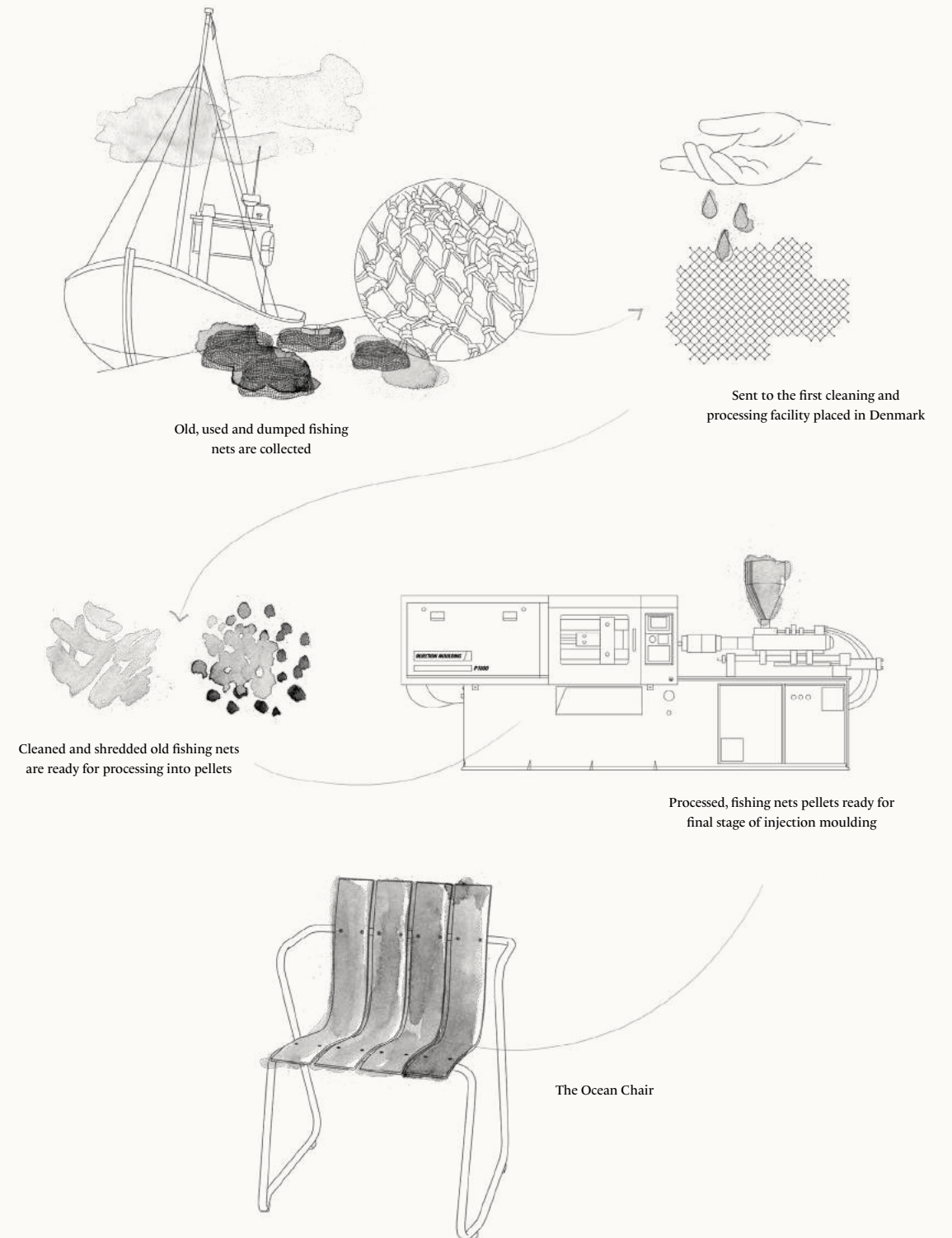
Fishing nets collected from the Ocean, processed in collaboration with Danish partners Plastix and Letbek Plast.

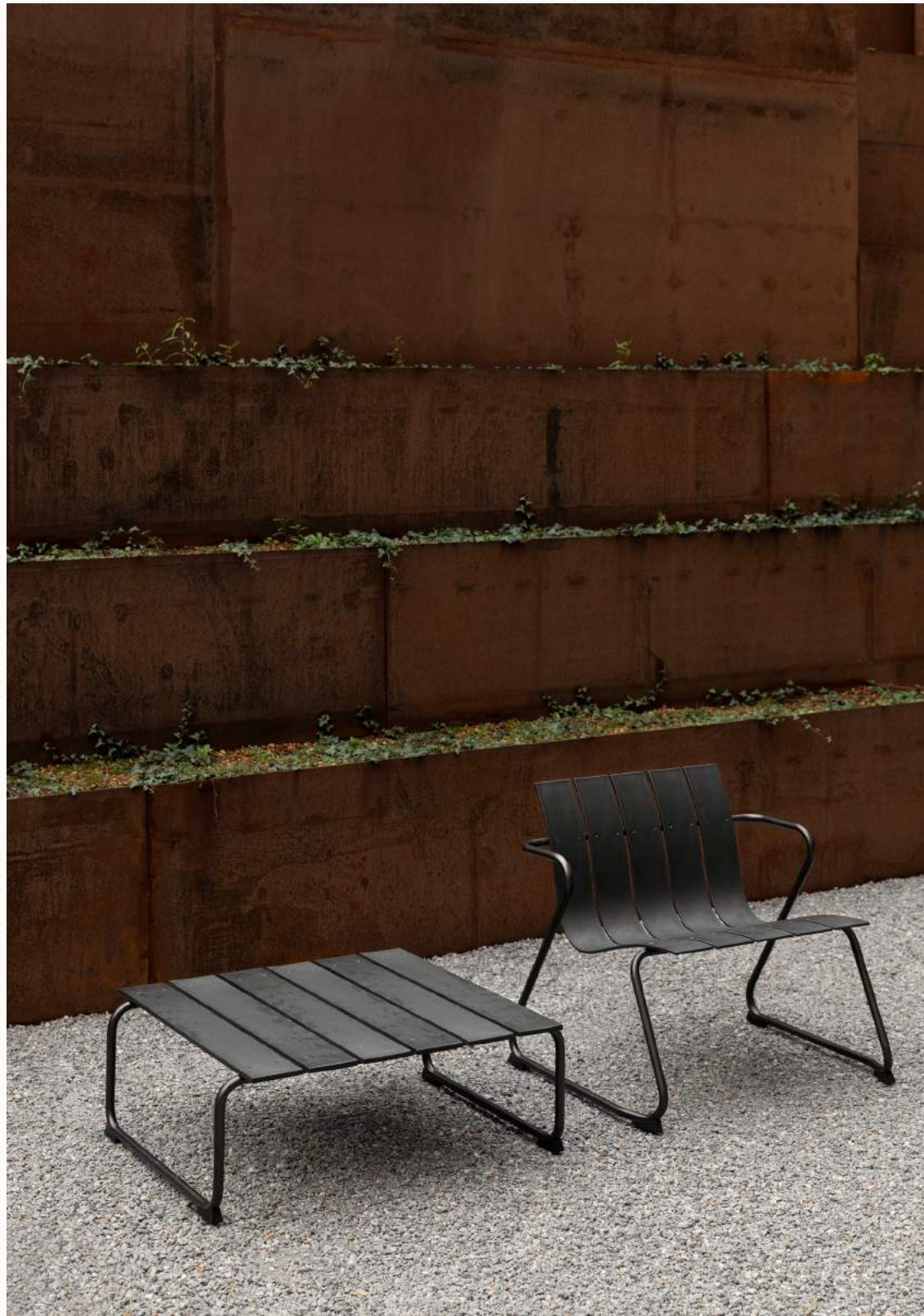
One Ocean Chair seat saves up to 82 % CO2 emissions compared to virgin equivalents

In a nod to its materiality, the Ocean collection is largely made from ocean plastic waste, one of the most important issues facing our planet. A new innovative business model motivates fishermen across the world to dispose of their discarded fishing nets.

One single Ocean chair uses 960g of ocean plastic waste.

From ocean waste to outdoor furniture

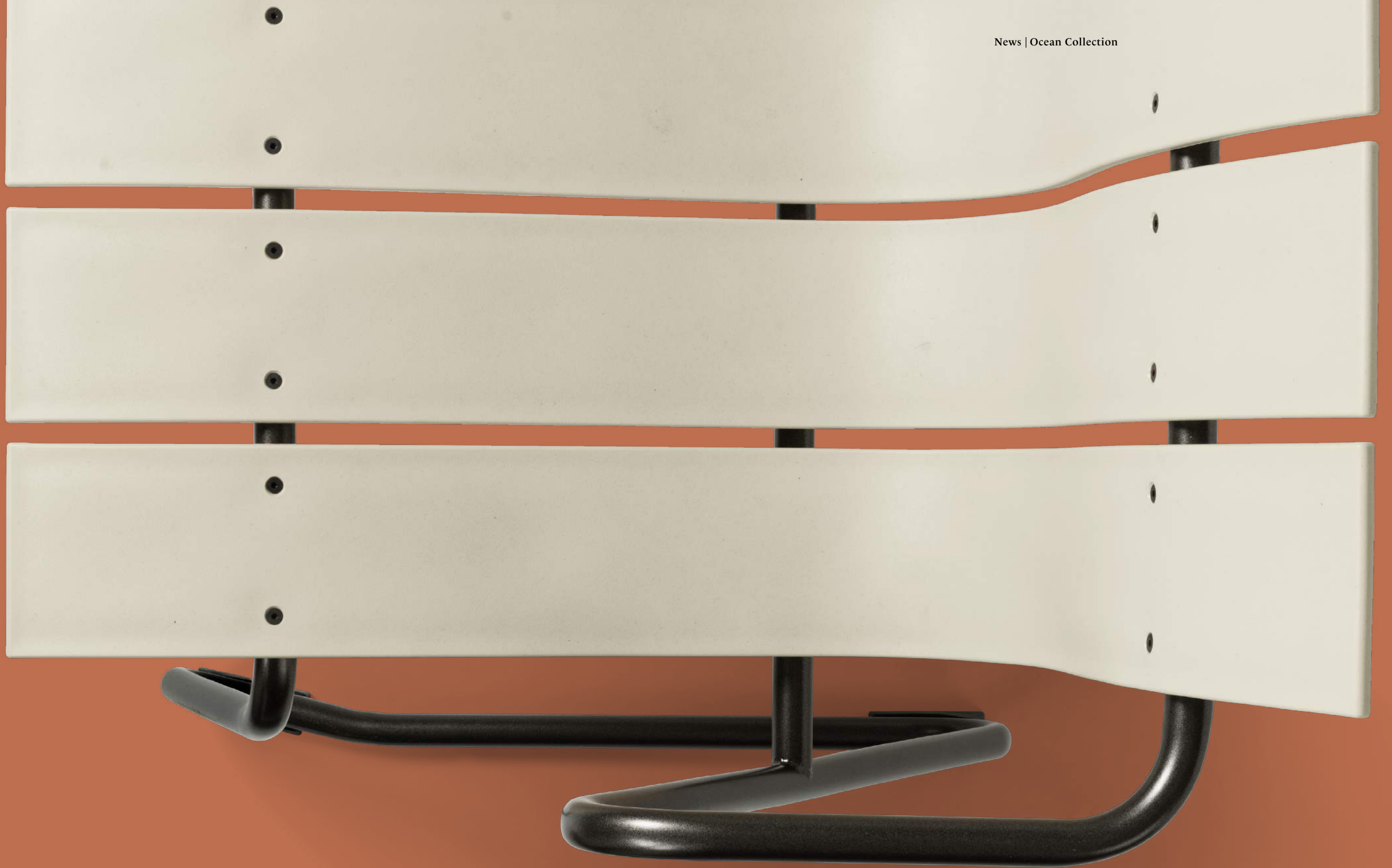




Ocean Lounge Table p. 69 | Ocean Lounge Chair p. 68



Ocean Bench p. 68



Ocean Bench p. 68



Ocean Chair p. 68
Villa Copenhagen, Hotel - Copenhagen, Denmark

Joergen & Nanna Ditzel



Nanna and Joergen Ditzel were born in respectively 1923 and 1921. They meet each other at the Danish School of Arts and Crafts in Copenhagen, where they both were students.

In 1946 they established their own design studio. The period from 1946 to 1961 was very productive for the young couple. After Joergens death in 1961 Nanna continued their joint project alone. Many new things were designed the following years, until her death in 2005.



Nova Sea Chair p. 72
Villa Copenhagen, Hotel - Copenhagen, Denmark

Nova Sea Chair

Designed by ARDE



Made from upcycled fishing nets

Nova Sea Chair designed by ARDE, is characterized by its light silhouette and sleek metal frame, with a seat made from ocean waste plastic, collected from the worlds oceans. The chair is developed through a collaboration between Mater, ARDE and the exclusive five-star hotel Villa Copenhagen.



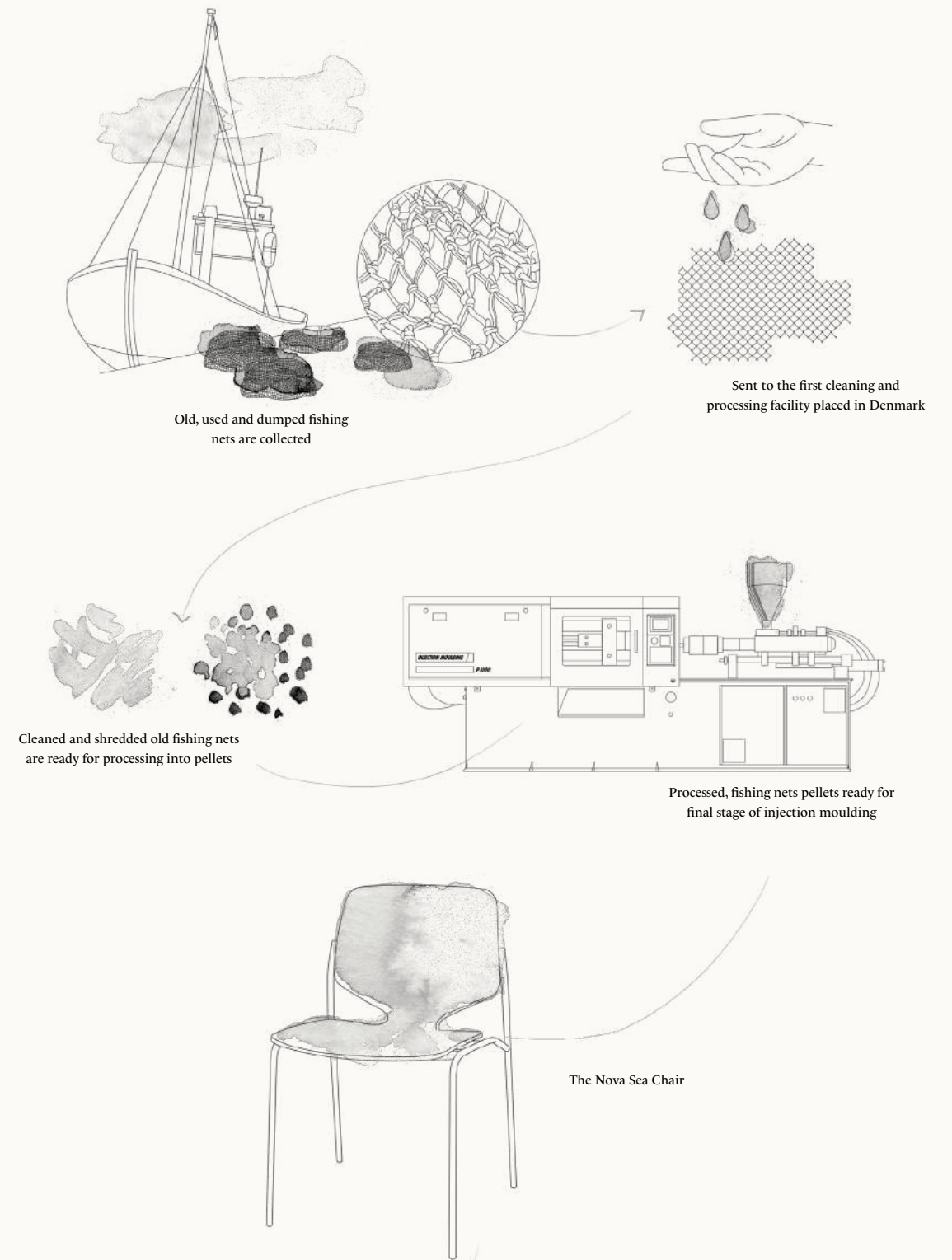


Discarded fishing nets made into green plastic pellets

Shell made from 96% upcycled ocean waste plastic

Nova Sea is largely made from ocean plastic waste, one of the most important issues facing our planet. A new innovative business model motivates fishermen across the world to dispose of their discarded fishing nets.

From discarded fishing nets to Nova Sea Chair





Textile made from upcycled consumer plastic waste

Post-consumer upcycled polyester is made from post-consumer waste such as PET plastic bottles that would otherwise have been incinerated or ended up in landfills. The upcycling process results in lower CO2 emissions than the process of making virgin polyester fibres and eliminates the need for new raw materials.





Nova Sea Chair p. 72 | Trumpet Coat Stand p. 90
Meeting room at Villa Copenhagen, Hotel - Copenhagen, Denmark

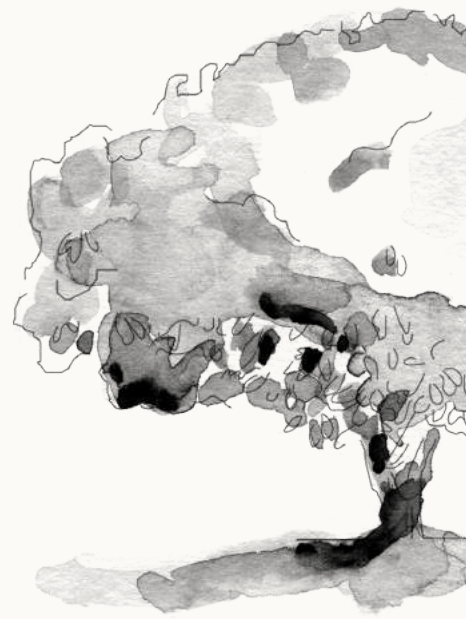
ARDE



ARDE was founded in 2014 by architect René Hougaard. ARDE make a great effort to create design that drives sustainable change, is functional and has a purpose. By considering the circular lifecycle of design and investigating how new and existing materials can be used and combined, ARDE eliminate what's unnecessary to identify the essential.



The Lounge Chair p. 76 | Accent Table, Large - Black p. 80



News
by Space Copenhagen

Made from FSC certified wood

The Space Copenhagen Collection for Mater is a versatile collection of contemporary Danish design with classic roots. It expresses a poetic modernism that harmonizes with the main driving force behind the overall design approach of Space Copenhagen.



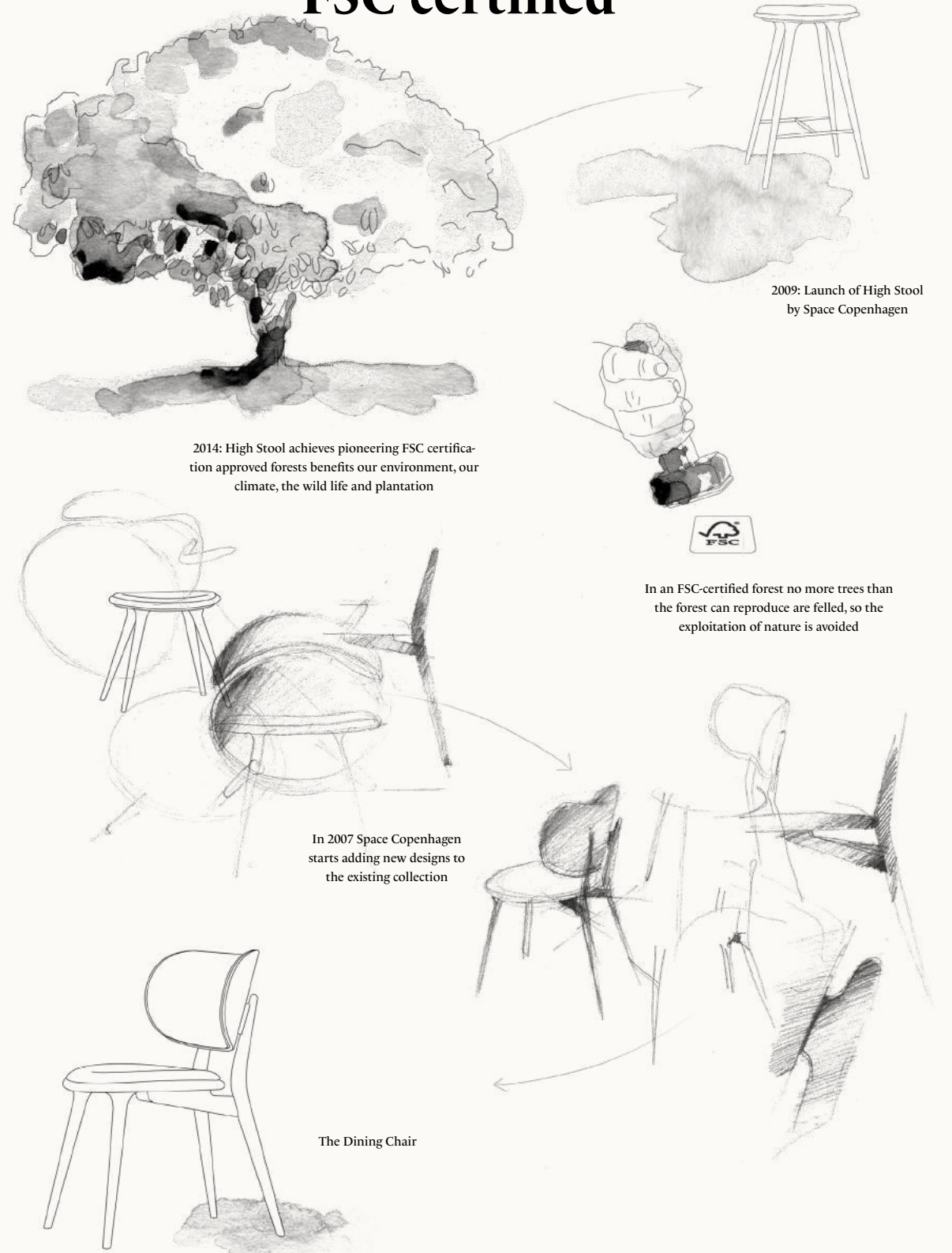


FSC Certified wood

Every time we harvest a tree, a new one is planted

All wood in our collection is labeled and produced in FSC(tm) certified wood. When producing furniture from FSC certified wood we support well-managed forestry. In an FSC-certified forest no more trees than the forest can reproduce are felled, so the exploitation of nature is avoided. FSC ensures fair wages and a fair trading price and gives full tracability. We can trace a chair back to the forest where the tree was planted.

All our wooden products are FSC certified





The Dining Chair

The Dining Chair with a generously rounded backrest, all made from sustainable sourced wood, is a beautifully sculptured chair inspired by High Stool. The dining chair's smooth curved backrest outweighs the need for armrests. The backrest itself is upholstered in soft durable leather and is fully supportive and comfortable which make it perfect for dining occasions.

The Dining Chair p. 76



The Lounge Chair

The Lounge Chair, designed by Space Copenhagen, is a classic, sculptural and archetypal piece of furniture built on The Dining Chair's and High Stool's character. The backrest and seat are larger and generously rounded with organic smooth curves and slightly sloped for a heightened sense of comfort. The seat and backrest are upholstered in a soft, durable leather and are fully supportive and comfortable.

The Lounge Chair p. 76

Accent Dining Table in Black

The Accent Dining Table is handcrafted in solid FSC oak wood, with a light silhouette of dedicated craftsmanship. It is available in two sizes, Ø110 and Ø140 cm and comes in three different colours; Natural, Sirka Grey and the new Black edition.

Accent Dining Table p. 81



High Stool Backrest

High Stool with a new backrest - hence the name High Stool Backrest builds on High Stool's minimalistic aesthetics and organic character, which is regarded as a New Danish Classic. A generously rounded backrest for a heightened sense of comfort is added.

High Stool Backrest p. 76





PART TWO

fasi
tion
confi
were l
women
I was mo
Solid
the Olym
and influe
newly wealt



The Lounge Chair - Black p. 76 | Accent Table, Small - Black p. 80



The Dining Chair - Natural p. 76 | Accent Café Table - Natural p. 81



Space Copenhagen



Space Copenhagen, established in 2005 by Signe Bindslev Henriksen and Peter Bundgaard Rützou. Space Copenhagen is a design studio working across multiple disciplines from furniture, lighting and refined objects, to art installations, art direction and interior design for private homes, hotels and restaurants all over the world.

High Stool Backrest - Sirka Grey p. 76 | Liuku Drop Pendant - Black p. 86 | Imago Mirror Object - Brass p. 90
Studio, Restaurant - Copenhagen, DK



Earth Stool Backrest - Mask Edition p. 73

Earth Stool & Earth Stool Backrest

Designed by Eva Harlou

Made from upcycled industrial waste

Earth Stool and Earth Stool Backrest is the result of a new innovative waste-to-value technique developed by Mater, that enables us to upcycle companies' industrial waste. The seats are made of plastic waste from the global leader in diabetes care, Novo Nordisk' production of insulin pens. The plastic waste from Novo Nordisk is mixed with coffeebean shells from BKI coffee - one of Denmark's largest coffee manufacturers or with waste from Carlsberg's beer production – the spent grain.

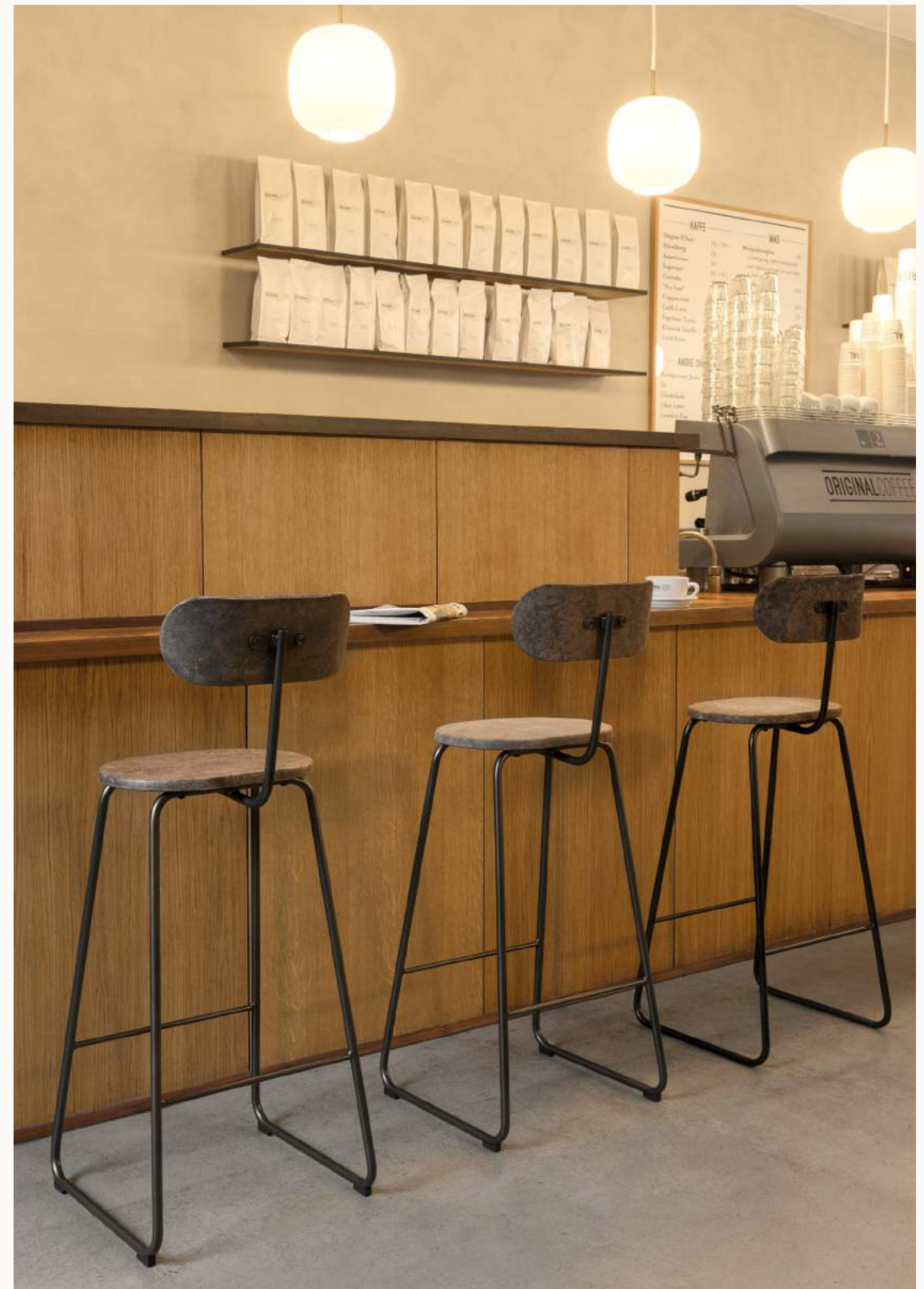


In collaboration with Carlsberg, Novo Nordisk & BKI Coffee

The technique is developed by Mater in collaboration with Danish Technological Institute with support from University of Copenhagen. The waste materials are mixed in a unique composite suitable for press moulding – a method designed to upcycle industrial waste from large global companies in a new way. The end result is a new recyclable composite that is completely new in its materiality, durability and strength.



Earth Stool Backrest - Coffee Edition p. 73 | Earth Stool Coffee Edition p. 73



Earth Stool Backrest - Mask Edition p. 73

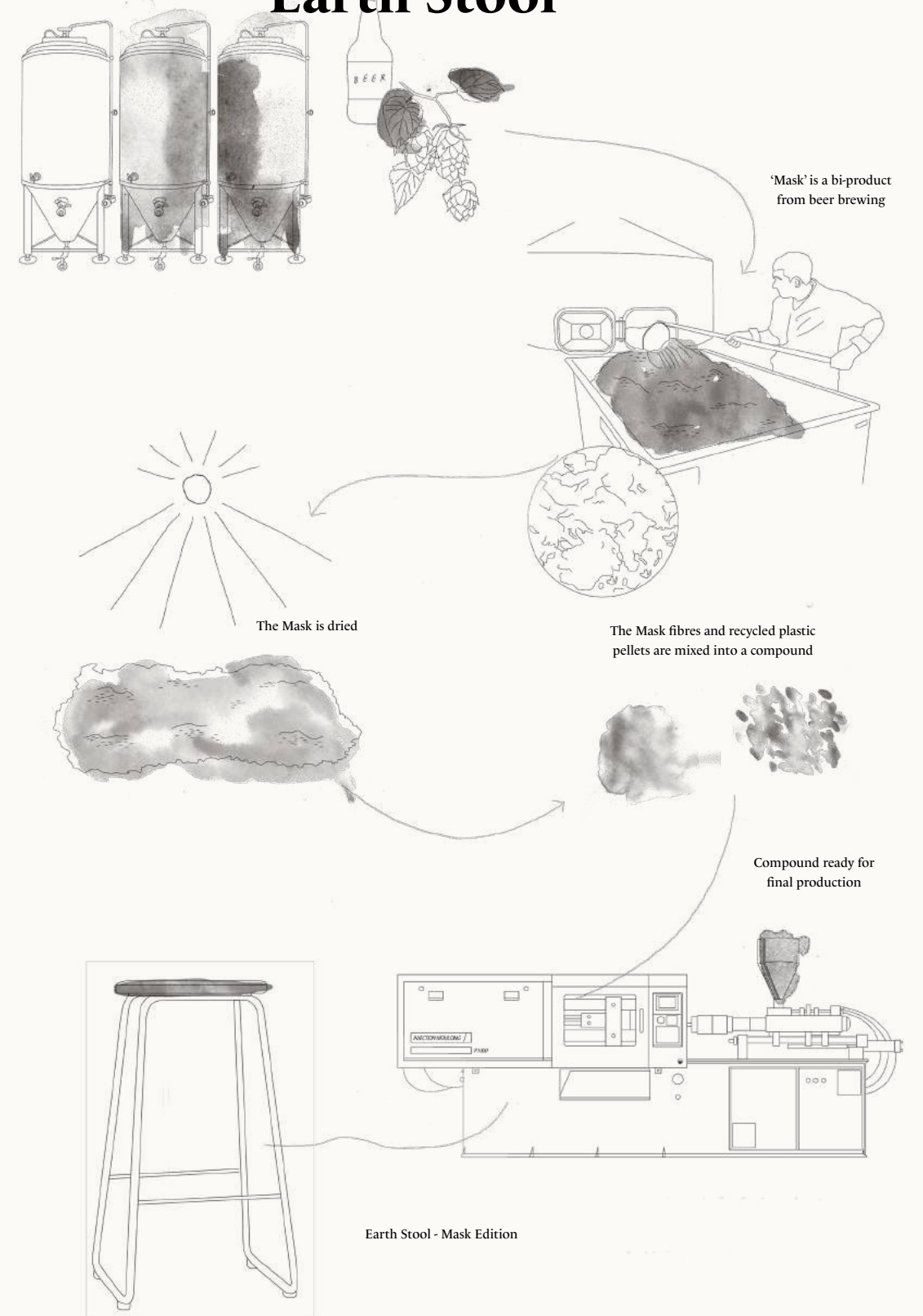


The Earth Stool seat is made from upcycled plastic waste from production of insulin pens mixed with beer fibre waste, thus creating a completely new innovative material finish.

One seat contains waste from 30 litres of beer production

Mater created the bar stool from a residual product from Carlsberg's beer production, the spent grain (Danish 'mask'), which is a wet fibre-based mass that is dried and mixed with granulate of plastic waste in a unique mixture that enables press molding.

From beer waste to Earth Stool





Earth Stool Backrest - Coffee Edition p. 73

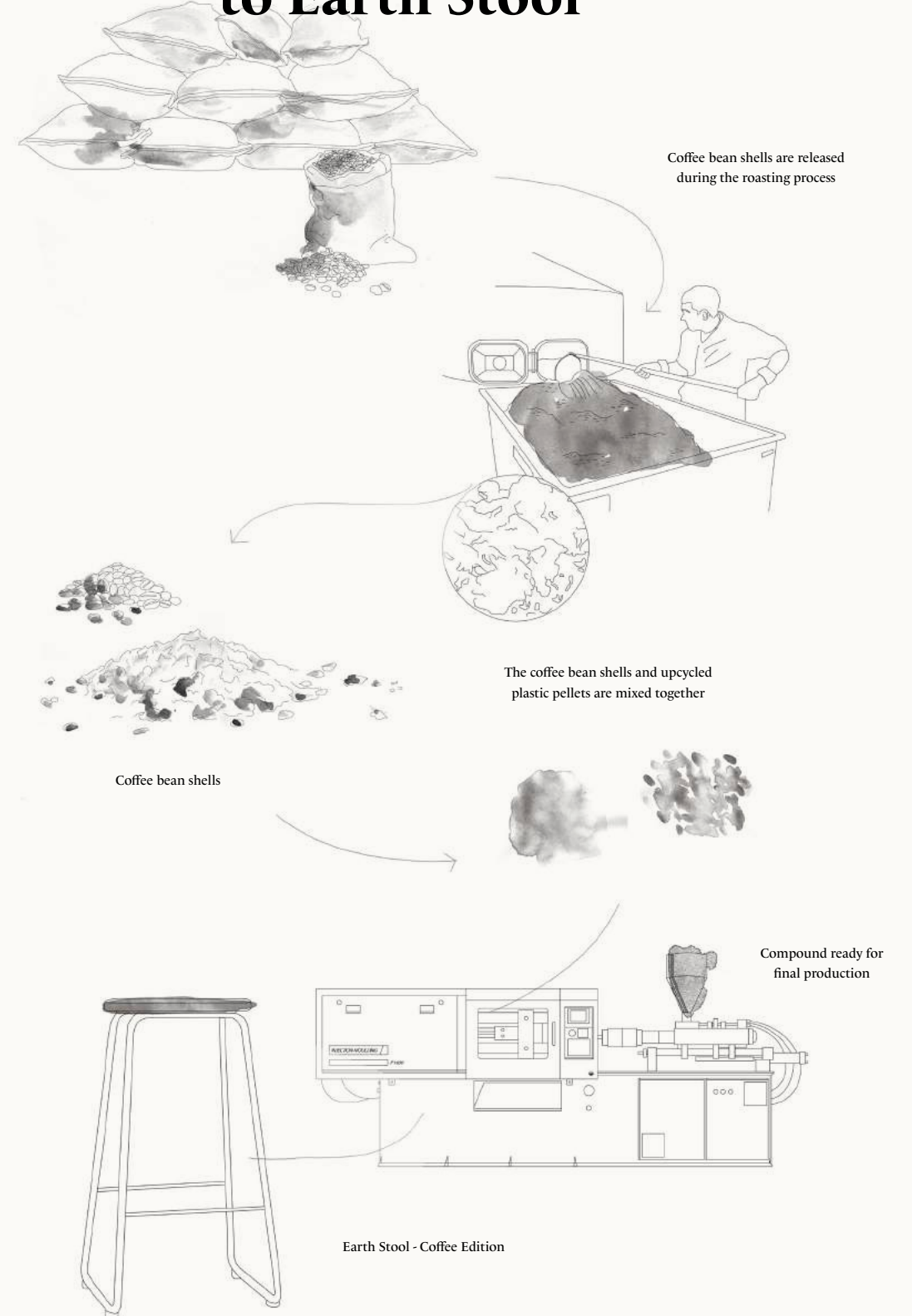


The Earth Stool seat is made from upcycled plastic waste from production of insulin pens mixed with coffee shell fibre waste, thus creating a completely new innovative material finish.

A mix of coffee shells & plastic waste from Novo Nordisk

Earth Stool represents classic Scandinavian design with steel frames that make the bar stool elegant and timeless. The new ground-breaking production technique allows Mater to upcycle waste materials and turn it into useful and unique design solutions.

From coffee shells to Earth Stool





Mask Stool - Natural Edition p. 72 | Ray Pendant, Medium - Black p. 87

Mask Stool

Designed by Eva Harlou



Made from upcycled industrial waste

Mask Stool is the result of a new innovative waste-to-value technique that enables Mater to upcycle companies' industrial waste. The seat is made of plastic waste from the global leader in diabetes care, Novo Nordisk' production of insulin pens. The plastic waste from Novo Nordisk is mixed with spent grain, a bi-product from Carlsberg's beer production.

'Mask' is the Danish word for the spent grain, hence the name of the stool.





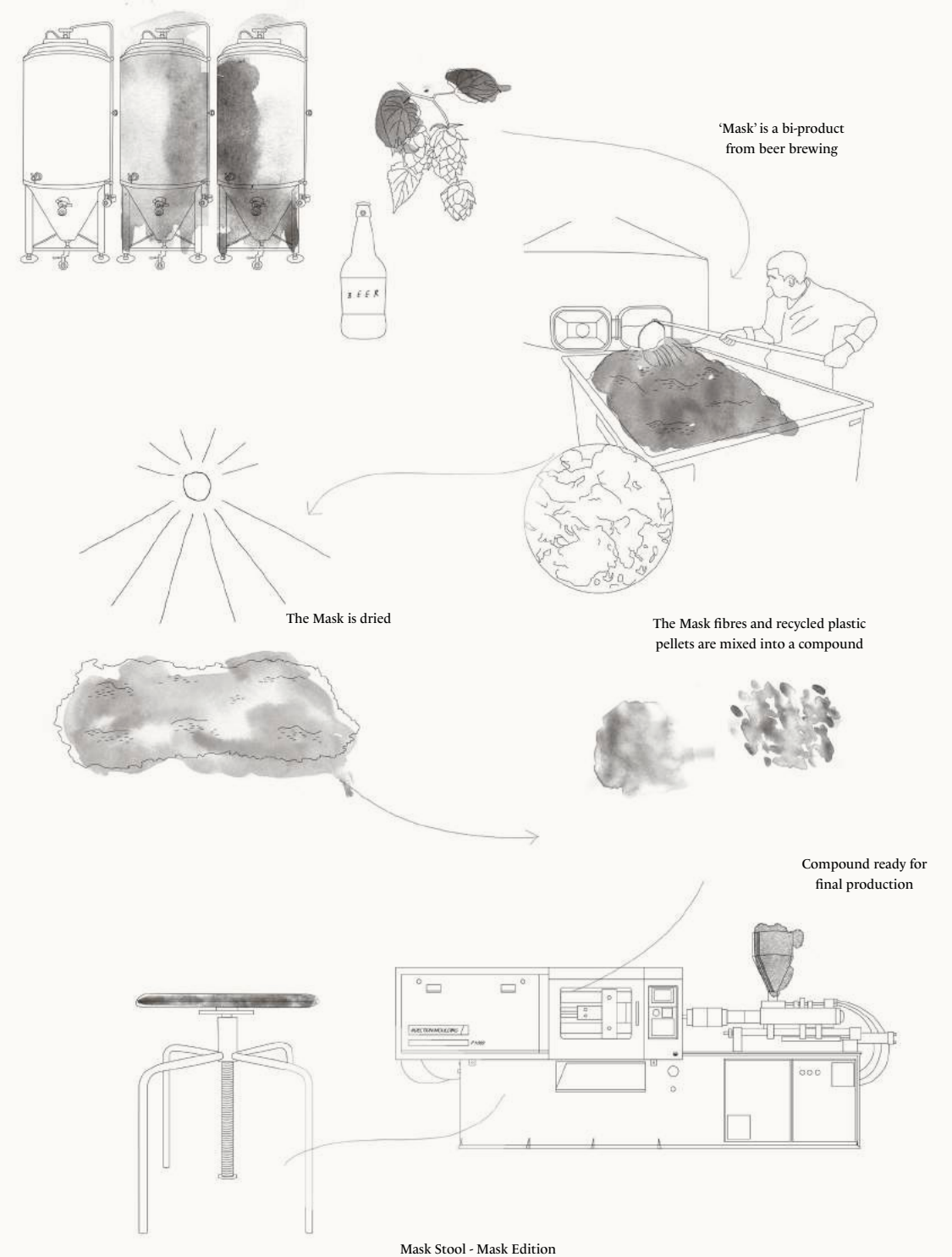
Mask Stool seat is made from upcycled plastic waste from production of insulin pens mixed with beer fibre waste, thus creating a completely new innovative material finish.

One seat contains waste from 30 litres of beer production

The new ground-breaking production technique allows Mater to upcycle waste materials and turn it into useful and unique design solutions. "Carlsberg is always looking for new solutions that can make our products better and our production more sustainable. Mater has succeeded in using our spent grain from beer production in a new way. Normally the mask is used for animal feed, but Mater has succeeded with a new method where the spent grain is mixed with recycled plastic to create furniture. It is in our spirit to always try to do it better."

- Tenna Skov Thorsted, Sustainability Manager at Carlsberg Denmark

From beer waste to Mask Stool





Adjustable in height
from low stool to high stool





Mask Stool - Natural Edition p. 72 | Ray Pendant, Medium - Black p. 87

Eva Harlou



Eva Harlou, a Danish architect graduated from Aarhus School of Architecture in 2003. Harlou's designs illustrate her Scandinavian sense of form, function and beauty while at the same time working internationally ambitiously and always creating something unique, both buildings and furniture.

She has her own architectural firm in Copenhagen, been awarded with "Best Breakthrough Designer" by Wallpaper * Magazine and hosted a wide range of residential and architecture programs on television.

Outdoor Furniture

OCEAN CHAIR

Designed by Joergen & Nanna Ditzel



Steel frame, gun metal finish
 Upcycled fishing nets / industrial plastic waste
 Black / Sand
 W 60 cm D 56 cm H 81 cm SH 46 cm AR 67 cm
 W 23.6" D 22" H 31.9" SH 18.1" AR 26.3"

Item no. 09301



Item no. 09303



OCEAN TABLE

Designed by Joergen & Nanna Ditzel



Steel frame, gun metal finish
 Upcycled fishing nets / industrial plastic waste
 Black / Sand
 W 70 cm D 70 cm H 74 cm
 W 27.5" D 27.5" H 29.1"

Item no. 09311

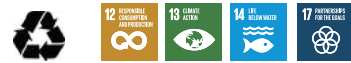


Item no. 09313



OCEAN LOUNGE CHAIR

Designed by Joergen & Nanna Ditzel



Steel frame, gun metal finish
 Upcycled fishing nets / industrial plastic waste
 Black / Sand
 W 72 cm D 63 cm H 67 cm SH 39 cm AR 55 cm W
 28.3" D 24.8" H 26.3" SH 15.3" AR 21.6"

Item no. 09331

NEW



Item no. 09333

NEW



OCEAN TABLE

Designed by Joergen & Nanna Ditzel



Steel frame, gun metal finish
 Upcycled fishing nets / industrial plastic waste
 Black / Sand
 L 140 cm D 70 cm H 74 cm
 W 55.1" D 27.5" H 29.1"

Item no. 09321



Item no. 09323



OCEAN BENCH

Designed by Joergen & Nanna Ditzel



Steel frame, gun metal finish
 Upcycled fishing nets / industrial plastic waste
 Black / Sand
 W 79 cm D 70 cm H 30
 W 31.1" D 27.5" H 11.8"

Item no. 09351

NEW



Item no. 09353

NEW



OCEAN LOUNGE TABLE

Designed by Joergen & Nanna Ditzel



Steel frame, gun metal finish
 Upcycled fishing nets / industrial plastic waste
 Black / Sand
 W 79 cm D 70 cm H 30
 W 31.1" D 27.5" H 11.8"

Item no. 09341

NEW



Item no. 09343

NEW



Furniture

NOVA SEA SIDECHAIR / ARMCHAIR
Designed by ARDE



Steel frame, Gun Metal finish
Upcycled fishing nets / industrial plastic waste and upcycled consumer waste textile.
Sidechair / Armchair w/ or w/o upholstered seat
W 55 cm D 55 cm H 80 cm ArH 67 cm /
W 21" D 19.3" H 17.7"

Item no. 09011

NEW



Item no. 09012

NEW



Item no. 09013

NEW



Item no. 09014

NEW



MASK STOOL
Designed by Eva Harlou



Steel frame, Black finish
Upcycled beer waste / industrial plastic waste
Mask Natural edition
W 40 cm D 40 cm SH 45 cm to 72 cm /
W 15.7" D 15.7" SH 17.7" to 28.3"
(adjustable seat height)

Item no. 06050

NEW



EARTH STOOL, SH 27.1"
Designed by Eva Harlou



Steel frame, Gun metal
Solid oak wood, FSC certified, Upcycled beer waste / Coffee brewing waste and industrial plastic waste
Coffee Waste Dark / Beer Waste Edition /
Coffee Waste Light
W 37 cm D 27 cm H 69 cm /
W 14.5" D 10.6" H 27.1"

Item no. 06046

NEW



Item no. 06045

NEW



Item no. 06048

NEW



EARTH STOOL, SH 29.1"
Designed by Eva Harlou



Steel frame, Gun metal
Solid oak wood, FSC certified, Upcycled beer waste / Coffee brewing waste and industrial plastic waste
Coffee Waste Dark / Beer Waste Edition /
Coffee Waste Light
W 37 cm D 27 cm H 74 cm /
W 14.5" D 10.6" H 29.1"

Item no. 06042

NEW



Item no. 06043

NEW



Item no. 06047

NEW



EARTH STOOL BACKREST, SH 27.1"
Designed by Eva Harlou



Steel frame, Gun metal
Upcycled beer waste / Coffee brewing waste and industrial plastic waste
Coffee Waste Dark / Beer Waste Edition /
Coffee Waste Light
W 37 cm D 27 cm H 99cm SH 69 cm /
W 14.5" D 10.6" H 38.9" SH 27.1"

Item no. 06062

NEW



Item no. 06063

NEW



Item no. 06068

NEW



EARTH STOOL BACKREST, SH 29.1"
Designed by Eva Harlou



Steel frame, Gun metal
Upcycled beer waste / Coffee brewing waste and industrial plastic waste
Coffee Waste Dark / Beer Waste Edition /
Coffee Waste Light
W 37 cm D 27 cm H 104 cm SH 74 /
W 14.5" D 10.6" H 40.9" SH 29.1"

Item no. 06065

NEW



Item no. 06066

NEW



Item no. 06067

NEW



LOW STOOL / HIGH STOOL
Designed by Space Copenhagen



Solid beech wood, FSC certified
Dark Stain Lacquered
w/ Black leather seat
W 45 cm D 36 cm /
W 17.7" D 14.1"

Item no. 01003
H 18.5"



Item no. 01002
H 29.1"



Item no. 01004
H 27.1"



LOW STOOL / HIGH STOOL
Designed by Space Copenhagen



Solid beech wood, FSC certified
Dark Stain Lacquered
w/ Black leather seat
W 45 cm D 36 cm /
W 17.7" D 14.1"

Item no. 01013
H 18.5"



Item no. 01012
H 29.1"



Item no. 01014
H 27.1"



LOW STOOL / HIGH STOOL
Designed by Space Copenhagen



Solid beech wood, FSC certified
Sirka Grey Stain Lacquered
w/ Black leather seat
W 45 cm D 36 cm /
W 17.7" D 14.1"

Item no. 01007
H 18.5"



Item no. 01006
H 29.1"



Item no. 01008
H 27.1"



LOW STOOL / HIGH STOOL
Designed by Space Copenhagen



Upcycled aluminum, Polished finish
w/ Black leather seat
W 45 cm D 36 cm /
W 17.7" D 14.1"

Item no. 01023
H 18.5"



Item no. 01022
H 29.1"



Item no. 01024
H 27.1"



LOW STOOL / HIGH STOOL
Designed by Space Copenhagen



Solid oak wood, FSC certified
Soaped w/ Natural leather seat
W 45 cm D 36 cm /
W 17.7" D 14.1"

Item no. 01033
H 18.5"



Item no. 01032
H 29.1"



Item no. 01034
H 27.1"



LOW STOOL / HIGH STOOL
Designed by Space Copenhagen



Solid oak wood, FSC certified
Sirka Grey Stain Lacquered
w/ Black leather seat
W 45 cm D 36 cm /
W 17.7" D 14.1"

Item no. 01043
H 18.5"



Item no. 01042
H 29.1"



Item no. 01044
H 27.1"



HIGH STOOL TEXTILE
Designed by Space Copenhagen



Sirka Grey Stain Lacquered Oak, FSC certified.
Plum: Two-coloured upholstery fabric
made from 98% post-consumer
recycled polyester seat
Grey: Naturally coloured wool seat

Item no. 01091
H 27.1"



Item no. 01092
H 27.1"



W 45 cm D 36 cm / W 17.7" D 14.1"

LOW STOOL / HIGH STOOL
Designed by Space Copenhagen



Solid oak wood, FSC certified
Dark Stain Lacquered
w/ Black leather seat
W 45 cm D 36 cm /
W 17.7" D 14.1"

Item no. 01053
H 18.5"



Item no. 01052
H 29.1"



Item no. 01054
H 27.1"



HIGH STOOL
Designed by Space Copenhagen



Solid oak wood, FSC certified
Black Stain Lacquered
w/ Black leather seat
W 45 cm D 36 cm /
W 17.7" D 14.1"

Item no. 01082
H 29.1"



Item no. 01084
H 27.1"



THE DINING CHAIR
Designed by Space Copenhagen



Solid oak wood / Beech wood, FSC certified
Natural Matt Lacquered Oak / Sirka Grey Stain
Oak / Black Lacquered Beech
Natural / Black leather seat
W 52 cm D 44 cm H 80 cm Sh 47 cm /
W 20.4" D 17.3" H 31.4" Sh 18.5"

Item no. 01201



Item no. 01202



Item no. 01204



HIGH STOOL BACKREST, SH 29.1"
Designed by Space Copenhagen



Solid oak wood / Beech wood, FSC certified
Natural Matt Lacquered Oak / Sirka Grey Stain
Oak / Black Lacquered Beech
Natural / Black leather seat
W 46 cm D 38 cm H 102 cm SH 74 cm /
W 18.1" D 14.9" H 40.1" SH 29.1"

Item no. 01211



Item no. 01212



Item no. 01214



HIGH STOOL BACKREST, SH 27.1"
Designed by Space Copenhagen



Solid oak wood / Beech wood, FSC certified
Natural Matt Lacquered Oak / Sirka Grey Stain
Oak / Black Lacquered Beech
Natural / Black leather seat
W 46 cm D 38 cm H 97 cm SH 69 cm /
W 18.1" D 14.9" H 38.1" SH 27.1"

Item no. 01221



Item no. 01222



Item no. 01224



THE LOUNGE CHAIR
Designed by Space Copenhagen



Solid oak wood / Beech wood, FSC certified
Natural Matt Lacquered Oak / Sirka Grey Stain
Oak / Black Lacquered Beech
Natural / Black leather seat
W 65 cm D 69 cm H 72 cm SH 40 cm /
W 25.5" D 27.1" H 28.3" SH 15.7"

Item no. 01231



Item no. 01232



Item no. 01234



SHELL BAR STOOL, SH 30.3"
Designed by Michael Dreeben



Solid oak wood, FSC certified
Sirka Grey lacquer stain
Pigmentet upholstery, ULTRA
Brandy / Cognac / Black
W 37 cm D 45 cm H 105 cm SH 77 cm /
W 14.5" D 17.7" H 41.3" SH 30.3"

Item no. 02190
Seat no. 02195



Item no. 02190
Seat no. 02193



Item no. 02190
Seat no. 02194



SHELL BAR STOOL, SH 28.3"
Designed by Michael Dreeben



Solid oak wood, FSC certified
Sirka Grey lacquer stain
Pigmentet upholstery, ULTRA
Brandy / Cognac / Black
W 37 cm D 45 cm H 100 cm SH 72 cm /
W 14.5" D 17.7" H 39.3" SH 28.3"

Item no. 02191
Seat no. 02195



Item no. 02191
Seat no. 02193



Item no. 02191
Seat no. 02194



SHELL DINING CHAIR
Designed by Michael Dreeben



Solid oak wood, FSC certified
Natural Matt Lacquered Oak / Sirka Grey Stain
Oak / Black Lacquered Oak
Pigmentet upholstery, ULTRA
Brandy / Cognac / Black
W 49 cm D 57 cm H 87 cm SH 45 cm /
W 19.2" D 22.4" H 34.2" SH 17.7"

Item no. 02290
Seat no. 02223



Item no. 02291
Seat no. 02221



Item no. 02292
Seat no. 02222



NESTOR SIDECHAIR
Designed by Tom Stepp



Solid Oak / Beech wood, FSC certified
Natural Matt Lacquered / Natural Paper cord seat
Sirka Grey Stain / Natural Paper cord seat
W 50 cm D 53 cm H 76 cm SH 44 cm /
W 19.7" D 20.9" H 29.9" SH 17.3"

Item no. 08206



Item no. 08106



NESTOR SIDECHAIR
Designed by Tom Stepp



Solid Beech wood, FSC certified
Black Lacquered / Black Paper cord seat
Black Lacquered / Natural Paper cord seat
W 50 cm D 53 cm H 76 cm SH 44 cm /
W 19.7" D 20.9" H 29.9" SH 17.3"

Item no. 08005



Item no. 08006

NEW



NESTOR ARMCHAIR
Designed by Tom Stepp



Solid Oak / Beech wood, FSC certified
Natural Matt Lacquered / Natural Paper cord seat
Sirka Grey Stain / Natural Paper cord seat
W 56 cm D 53 cm H 76 cm SH 44 cm ARH 68 cm /
W 22.4" D 20.8" H 30" SH 17.3" ARH 26.7"

Item no. 08203



Item no. 08103



NESTOR ARMCHAIR
Designed by Tom Stepp



Solid Beech wood, FSC certified
Black Lacquered / Black Paper cord seat
Black Lacquered / Natural Paper cord seat
W 56 cm D 53 cm H 76 cm SH 44 cm ARH 68 cm /
W 22.4" D 20.8" H 30" SH 17.3" ARH 26.7"

Item no. 08004



Item no. 08003

NEW



ROCKER CHAIR

Designed by Shawn Place



Solid oak wood, FSC certified
 Natural Matt Lacquered / Harness Whiskey
 (Vegetable tanned leather)
 Sirka Grey Stain / Harness Mustang
 (Vegetable tanned leather)
 W 59.5 cm D 86.5 cm H 78 cm SH 33 cm /
 W 23.4" D 34" H 30.7" SH 13"

Item no. 07010



Item no. 07011



MOLLIS SOFA

Designed by ByKato



Oak, FSC certified. Black Lacquered
 Kvadrat Re-wool 0218 upholstery
 L 203 cm D 85 cm H 81 cm SH 37 cm SD 73 cm
 L 80" D 33.4" H 31.9" SH 14.5" SD 28.7"

Item no. 05030



BOWL TABLE, SMALL

Designed by Ayush Kasliwal



Solid mango wood, FSC certified
 Natural Matt Lacquered / Sirka Grey Stain
 / Black Lacquered
 Black steel legs
 Ø 40 cm H 38 cm / Ø 15.7" H 14.9"

Item no. 01604



Item no. 01605



Item no. 01606



BOWL TABLE, MEDIUM

Designed by Ayush Kasliwal



Solid mango wood, FSC certified
 Natural Matt Lacquered / Sirka Grey Stain
 / Black Lacquered
 Black steel legs
 Ø 46 cm H 52 cm / Ø 18.1" H 20.4"

Item no. 01601



Item no. 01602



Item no. 01603



BOWL TABLE, LARGE

Designed by Ayush Kasliwal



Solid mango wood, FSC certified
 Natural Matt Lacquered / Sirka Grey Stain
 / Black Lacquered
 Black steel legs
 Ø 52 cm H 46 cm / Ø 20.4" H 18.1"

Item no. 01607



Item no. 01608



Item no. 01609



BOWL TABLE, EXTRA LARGE

Designed by Ayush Kasliwal



Solid mango wood, FSC certified
 Natural Matt Lacquered / Sirka Grey Stain
 / Black Lacquered
 Black steel legs
 Ø 75 cm H 38 cm / Ø 29.5" H 14.9"

Item no. 01611



Item no. 01612



Item no. 01613



ACCENT TABLE, SMALL
Designed by Space Copenhagen



Solid oak wood, FSC certified
Natural Matt Lacquered / Sirka Grey Stain
/ Black Lacquered
Ø 45 cm H 42 cm / Ø 17.7" H 16.5"

Item no. 01411



Item no. 01401



Item no. 01421

NEW



ACCENT TABLE, MEDIUM
Designed by Space Copenhagen



Solid oak wood, FSC certified
Natural Matt Lacquered / Sirka Grey Stain
/ Black Lacquered
Ø 45 cm H 55 cm / Ø 17.7" H 21.6"

Item no. 01412



Item no. 01402



Item no. 01422

NEW



ACCENT TABLE, LARGE
Designed by Space Copenhagen



Solid oak wood, FSC certified
Natural Matt Lacquered / Sirka Grey Stain
/ Black Lacquered
Ø 60 cm H 55 cm / Ø 23.6" H 21.6"

Item no. 01413



Item no. 01403



Item no. 01423

NEW



ACCENT TABLE, EXTRA LARGE
Designed by Space Copenhagen



Solid oak wood, FSC certified
Natural Matt Lacquered / Sirka Grey Stain
/ Black Lacquered
Ø 70 cm H 42 cm / Ø 27.5" H 16.5"

Item no. 01418

NEW



Item no. 01408

NEW



Item no. 01428

NEW



ACCENT OVAL LOUNGE TABLE
Designed by Space Copenhagen



Solid oak wood, FSC certified
Natural Matt Lacquered / Sirka Grey Stain
W 80 cm L 120 cm H 42 cm /
W 31.5" L 47.2 H 16.5

Item no. 01414



Item no. 01404



ACCENT CAFÉ TABLE
Designed by Space Copenhagen



Solid oak wood, FSC certified
Natural Matt Lacquered / Sirka Grey Stain
Ø 70 cm H 73 cm / Ø 27.5" H 28.7"

Item no. 01416



Item no. 01406



ACCENT DINING TABLE, Ø 43.3"
Designed by Space Copenhagen



Solid oak wood, FSC certified
Natural Matt Lacquered / Sirka Grey Stain
/ Black Lacquered
Ø 110 cm H 73 cm / Ø 43.3" H 28.7"

Item no. 01415



Item no. 01405



Item no. 01425

NEW



ACCENT DINING TABLE, Ø 55.1"
Designed by Space Copenhagen



Solid oak wood, FSC certified
Natural Matt Lacquered / Sirka Grey Stain
/ Black Lacquered
Ø 140 cm H 73 cm / Ø 55.1" H 28.7"

Item no. 01417



Item no. 01407



Item no. 01427

NEW



Lighting

TERHO PENDANT, SMALL
Designed by Maija Puoskari



UL Certified
Solid Linden wood, FSC certified
Natural / Opal white - Black lacquered / Smoked
Glass shade, mouth blown, Textile cord
E27 — Max 9W LED
Small: Ø 135 mm H 215 mm / Ø 5.3" H 8.4"

Item no. 02301



Item no. 02311



TERHO PENDANT, MEDIUM
Designed by Maija Puoskari



UL Certified
Solid Linden wood, FSC certified
Natural / Opal white - Black lacquered / Smoked
Glass shade, mouth blown, Textile cord
E27 — Max 9W LED
Medium: Ø 240 mm H 215 mm / Ø 9.4" H 8.4"

Item no. 02302



Item no. 02312



TERHO PENDANT, LARGE
Designed by Maija Puoskari



UL Certified
Solid Linden wood, FSC certified
Natural / Opal white - Black lacquered / Smoked
Glass shade, mouth blown, Textile cord
E27 — Max 9W LED
Large: Ø 330 mm H 300 mm / Ø 12.9" H 11.8"

Item no. 02303



Item no. 02313



LATHE LAMP
Designed by Jesper K. Thomsen
& Sanne Traberg



UL Certified
Solid Oak wood, FSC certified
Natural / Sirka Grey Lacquered
Black aluminium frame, Black linen shade
E26 — Max 9W LED (Bulb not included)
Ø 51 cm H 149 cm / Ø 20" H 58.6"
Wire length: 2 m / 78"

Item no. 00453



Item no. 00454



LIUKU PENDANT, BALL & DROP
Designed by Maija Puoskari



UL Certified
Solid Linden wood, FSC certified
Natural Matt Lacquered
Textile cord
GU10 — LED Max 9W
Ø 140 mm / Ø 5.5"
Ø 140 mm H 195 mm / Ø 5.5" H 7.6"

Item no. 02901



Item no. 02902



LIUKU PENDANT, BALL W/ SHADE
Designed by Maija Puoskari



UL Certified
Solid Linden wood, FSC certified
Natural Matt Lacquered
Glass shade, mouth blown, Textile cord
Transparent / Smoked / Violet gradient
GU10 — LED Max 9W
Ø 195 mm H 345 mm / Ø 7.6" H 13.5"

Item no. 02901
Shade no. 02911



Item no. 02901
Shade no. 02912



Item no. 02901
Shade no. 02913



LIUKU PENDANT, DROP W/ SHADE
Designed by Maija Puoskari



UL Certified
Solid Linden wood, FSC certified
Natural Matt Lacquered
Glass shade, mouth blown, Textile cord
Transparent / Smoked / Violet gradient
GU10 — LED Max 9W
Ø 195 mm H 405 mm / Ø 7.6" H 15.9"

Item no. 02902
Shade no. 02911



Item no. 02902
Shade no. 02912



Item no. 02902
Shade no. 02913



LIUKU PENDANT, BALL & DROP
Designed by Maija Puoskari

Item no. 02903

Item no. 02904



UL Certified
Solid linden wood, FSC certified
Black Lacquered
Black textile cord
GU10 — LED Max 9W
Ø 14 cm / Ø 5.5"
Ø 14 cm H 19,5 cm / Ø 5.5" H 7.6"



LIUKU PENDANT, BALL W/ SHADE
Designed by Maija Puoskari

Item no. 02903
Shade no. 02911

Item no. 02903
Shade no. 02912

Item no. 02903
Shade no. 02913



UL Certified
Solid linden wood, FSC certified
Black Lacquered
Glass shade, Black textile cord
Transparent / Smoked / Violet gradient
GU10 — LED Max 9W
Ø 19,5 cm H 34,5 cm / Ø 7.6" H 13.5"



LIUKU PENDANT, DROP W/ SHADE
Designed by Maija Puoskari

Item no. 02904
Shade no. 02911

Item no. 02904
Shade no. 02912

Item no. 02904
Shade no. 02913



UL Certified
Solid linden wood, FSC certified
Black Lacquered
Glass shade, Black textile cord
Transparent / Smoked / Violet gradient
GU10 — LED Max 9W
Ø 19,5 cm H 40,5 cm / Ø 7.6" H 15.9"



FIREFLY PENDANT
Designed by José de la O

Item no. 02401

Item no. 02411



UL Certified
Steel, Copper / Black plated top
Glass, partly sandblasted
Black textile cord
GU10 — LED Max 9W
Ø 10,8 cm H 47,5 cm / Ø 4.2" H 18.7"



RAY PENDANT, SMALL
Designed by PEDERJESSEN

Item no. 02501

Item no. 02502



UL Certified
Oak wood, FSC certified
Steel, White / Black painted, Textile cord
GU9 — LED Max 10W (Bulb not included)
Ø 119 mm / Ø 4.6"
Wire length: 2 m / 78"



RAY PENDANT, MEDIUM
Designed by PEDERJESSEN

Item no. 02503

Item no. 02504



UL Certified
Oak wood, FSC certified
Steel, White / Black painted, Textile cord
GU9 — LED Max 10W (Bulb not included)
Ø 150 mm H 125 mm / Ø 5.9" H 4.9"
Wire length: 2 m / 78"



SHADE LIGHT PENDANT, SMALL
Designed by Space Copenhagen

Item no. 00204



Aluminium, hand spun
Black powder coated
Textile cord
E27 — Max 9W LED/energy saving
Ø 400 mm H 205 mm / Ø 15.7" H 8"



SHADE LIGHT PENDANT, LARGE
Designed by Space Copenhagen

Item no. 00201



Aluminium, hand spun
Black powder coated
Textile cord
E27 — Max 9W LED/energy saving
Ø 600 mm H 305 mm / Ø 23.6" H 12"



Objects

TRUMPET COAT STAND
Designed by Space Copenhagen



70 % upcycled casted aluminium
Polished / Black powder coated
Ø 64 cm H 200 cm
Ø 25.1" H 87.7"

Item no. 00225



Item no. 00226



SOPHIE MIRROR
Designed by Jean François Merillou



Sustainably harvested mango wood
Leather rim, brown leather / black leather
Small: Ø 42 cm D 7 cm / Ø 16.5" D 2.7"
Medium: Ø 50 cm D 7 cm / Ø 19.6" D 2.7"
Large: Ø 61 cm D 7 cm / Ø 24" D 2.7"

Item no. 02801



Item no. 02802



Item no. 02803



HANDLE VASE
Designed by Eva Harlou



Oak, FSC certified
Borosilicate glass
H 180 mm W 200 mm D 75 mm
H 7" W 7.8" D 3.1"

Item no. 90101



IMAGO MIRROR OBJECT
Designed by PEDERJESSEN



Stainless Steel / Brass, polished
Ø 580 mm D 70 mm
Ø 22.8" D 2.7"

Item no. 04090



Item no. 04091



Material overview

Mater Collection | Material overview

BEECH WOOD,
FSC CERTIFIED



Dark Stained



Black Stained



Sirka Grey Stained

MANGO WOOD,
FSC CERTIFIED



Natural Matt
Lacquered



Black Stained



Sirka Grey Stained

LINDEN WOOD,
FSC CERTIFIED



Natural Matt
Lacquered



Black Stained

OAK WOOD,
FSC CERTIFIED



Natural Matt
Lacquered



Black Stained



Sirka Grey Stained



Soaped



Dark Stained

Mater Collection | Material overview

LEATHER



Ultra Brandy



Ultra Cognac



Ultra Black



Mustang



Whiskey



Natural



Black

ALUMINUM



Polished



Black Coated

METAL



Brass



Black coated



Copper plated

STAINLESS STEEL



Brass polished

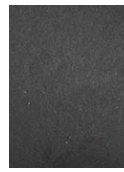


Stainless Steel
Polished

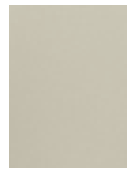
Mater Collection | Material overview

UPCYCLED FISHING NETS

Variation will occur due to upcycled materials



Black,
Ocean Collection



Sand,
Ocean Collection



Black,
Nova Sea Chair

UPCYCLED COFFEE SHELLS & INDUSTRIAL PLASTIC WASTE

Variation will occur due to upcycled materials



Coffee Waste Dark



Coffee Waste Light

UPCYCLED BEER WASTE (MASK) & INDUSTRIAL PLASTIC WASTE

Variation will occur due to upcycled materials



Beer Waste

PAPER CORD



Black

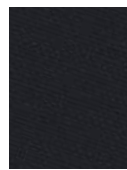


Natural

UPCYCLED TEXTILE



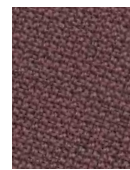
Re-wool,
Kvadrat



Cura,
Gabriel



Re-wool Molly 2,
Kvadrat Textile



CURA 64195,
Gabriel® Fabrics

Mater Collection | Material overview

GLASS, BOROSILCATE



Transparent



Smoked



Violet



Opal white

Designers

Our external base of commissioned designers includes both established and young design talents. In close collaboration with Mater they interpret the Scandinavian design philosophy to their own unique creations of high quality furniture lighting & accessories, while supporting the UN Sustainable Development Goals.



Jørgen & Nanna Ditzel



ARDE



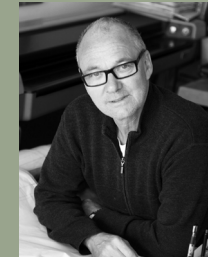
Space Copenhagen



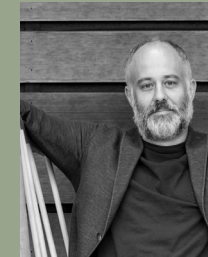
Eva Harlou



Ayush Kasliwal



Tom Stepp



Shawn Place



ByKato



PEDERJESSEN



Michael Dreeben



Jesper K. Thomsen



Sanne Traberg



Maija Puoskari



Jean Francois Merillou



Jose dé la O

Contact

Mater USA

North, Central and South America
325 N. Larchmont Boulevard, Suite #251
Los Angeles, CA 90004

Ph: +1 323 944 1383
materusa@materdesign.com

Learn more

Newsletter
Please sign up at our webpage:
www.materusa.com

Instagram
[@materusa](https://www.instagram.com/materusa)

Thanks to



Carlsberg/Re-plast
Novo Nordisk
BKI Coffee
Choice Hotels, Villa Copenhagen
Danish Technological Institute
Copenhagen University
Plastix, Ocean fishing nets upcycling
Letbek, plastic injection moulding
Martin Munkebo, plastic injection moulding
Aage Vestergaard Larsen, waste upcycling
Målbar, carbon footprint tracker
Trebo, upcycling
Kvist Industries
Kvadrat textiles
Gabriel textiles
FSC Denmark
BS Steel

**Considering the planet,
its resources and its people.**

[@materdesign](#)
www.materdesign.com