

CIRCULAR DESIGN - REDUCE - REUSE - RECYCLE - WASTE - RESPONSIBLE RESOURCES - REFORESTATION - CRAFT MASTERSHIP - TRANSPARENCY - EFFICIENT ENERGY - ENVIRONMENTAL AWARENESS - SUSTAINABILITY

mater
Circular since 2006

Mater

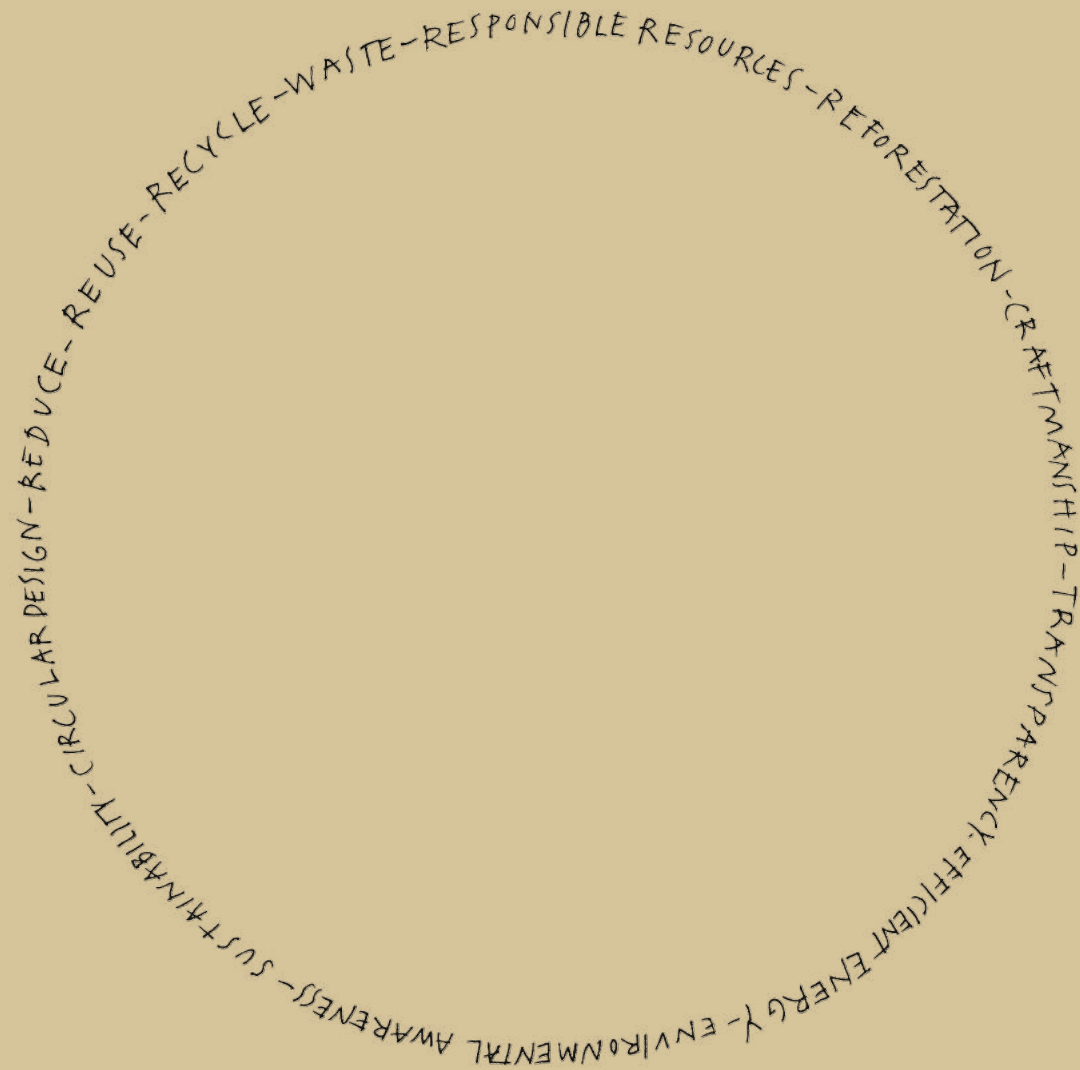


Mater means *mother* in latin

Circular since 2006

Founded in Copenhagen in 2006, Mater was created to be the pioneering global brand with sustainability embedded in its core.

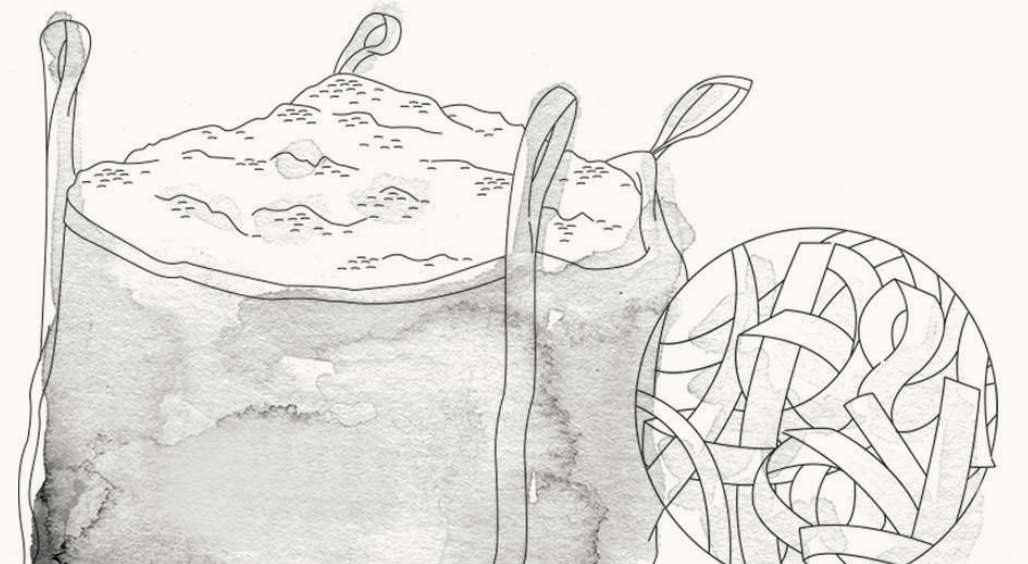
From the very beginning the ambition was to inspire a global design audience and engage people into sustainable thinking. Mater combines sustainability and circular production using waste, with timeless design, through collaboration with an external base of well-established and new design talents.



Together we are committed

After years of research for more sustainable ways to create furniture, lighting and objects we now work with a range of production partners with the same ambition as us, creating partnerships for change and supporting the United Nations Sustainable Development Goals.

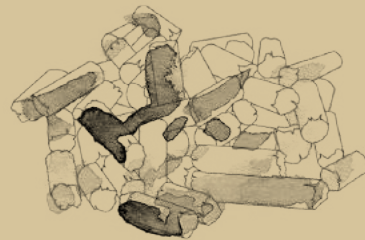
Together we are committed to searching for new and better ways of making beautiful design - in a responsible way.



Our Materials

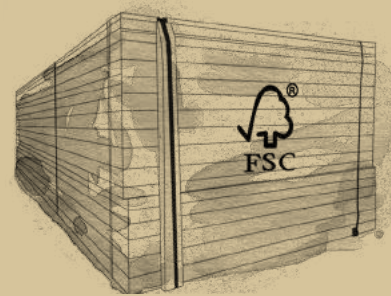
Every material we use is a tribute to sustainable thinking.

Maters foundation and first pioneering steps towards creating timeless sustainable furniture design started in 2006 - and have since then expanded to a wider palette of upcycled and innovative circular materials continually pushing the boundaries of exploring new materials.



Industrial plastic waste

Most of our industrial plastic waste comes for large danish corporations, such as plastic waste from production of insulin pens from global diabetes leader - Novo Nordisk.



FSC certified wood

All wooden products in our collection have always been made from FSC certified wood. In an FSC-certified forest no more trees than the forest can reproduce are felled, so the exploitation of nature is avoided. FSC ensures fair wages and a fair trading price and gives full tracability from product to forest.



Upcycled mango wood

When the tree ends it's productive life as a fruit tree a new one is automatically planted. Instead of low value usage such as burning it, the wood is upcycled, to provide income for the struggling wood-working craft. All our mango wood is FSC certified.



Coffee shell waste

Coffee shell waste is a bi-product from coffee bean roasting. Together with BK1 Coffee, one the largest coffee roasteries in Denmark, we use this fibre-based waste for several of our shell chairs.



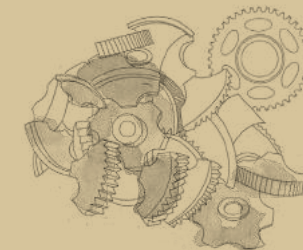
Discarded fishing nets

Old fishing nets from the ocean is collected, washed, shredded and made into pellets also called 'green plastic'. The ocean waste is used both in our outdoor series and injection moulded chairs.



Spent grain waste

Spent grain waste is a bi-product from the Danish brewery Carlsberg's beer production that we use in several of our new circular products.



Upcycled aluminum

Old pipes, tubes and other aluminum waste is melted and used for several of our sand casted products. A way of upcycling low value scrap into beautiful design pieces.

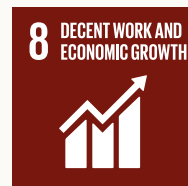
We are committed to

The Sustainable Development Goals

At Mater we align our sustainable values with The United Nations Global Goals for sustainable development - a framework agreed by 193 nations, organized into 17 Sustainable Development Goals to improve our planet and living conditions towards 2030. Today we support eight of them with our collection.



All our lighting is made of materials with sustainable elements - from recycled aluminum to certified wood. The newest LED technology is embedded in all our lighting as this is the most sustainable source of lighting to help save energy.



Through our code of conduct we make sure that we work towards better standards - safe working conditions, fair wages, fair price and following local environmental standards.



We bring new innovative production techniques into the furniture business, upcycling industrial waste, and by mid 2021 we have invested in a revolutionary circular production facility for large scale production.



Sustainable consumption is about doing better with less. With our circular waste production we support a consumption driven change, the more we sell the more waste we remove.



Using circular and upcycled materials in our design supports a reduction of carbon emissions. An example is the Ocean Collection where one single Ocean Chair demonstrates up to 82% in carbon emission savings compared to virgin plastic.



Both our Ocean and Nova Sea collection is made of discharged fishing nets from the oceans. We are proud that these products contribute to reducing landfill, marine pollution and loss of valuable resources.



All our wooden products are FSC certified. In an FSC-certified forest no more trees than the forest can reproduce are felled, so the exploitation of nature is avoided. FSC insures fair pricing and fair wages as well as fair working conditions.



We work with a range of production partners with the same ambition as Mater - creating partnerships for change. Together we are committed to searching for new and better ways of making timeless design in a responsible way.

Lighting

TERHO PENDANT, SMALL
Designed by Maija Puoskari



UL Certified
Solid Linden wood, FSC certified
Natural / Opal white - Black lacquered / Smoked
Glass shade, mouth blown, Textile cord
E27 — Max 9W LED
Small: Ø 135 mm H 215 mm / Ø 5.3" H 8.4"

Item no. 02301



Item no. 02311



TERHO PENDANT, MEDIUM
Designed by Maija Puoskari



UL Certified
Solid Linden wood, FSC certified
Natural / Opal white - Black lacquered / Smoked
Glass shade, mouth blown, Textile cord
E27 — Max 9W LED
Medium: Ø 240 mm H 215 mm / Ø 9.4" H 8.4"

Item no. 02302



Item no. 02312



TERHO PENDANT, LARGE
Designed by Maija Puoskari



UL Certified
Solid Linden wood, FSC certified
Natural / Opal white - Black lacquered / Smoked
Glass shade, mouth blown, Textile cord
E27 — Max 9W LED
Large: Ø 330 mm H 300 mm / Ø 12.9" H 11.8"

Item no. 02303



Item no. 02313



LATHE LAMP
Designed by Jesper K. Thomsen
& Sanne Traberg



UL Certified
Solid Oak wood, FSC certified
Natural / Sirka Grey Lacquered
Black aluminium frame, Black linen shade
E26 — Max 9W LED (Bulb not included)
Ø 51 cm H 149 cm / Ø 20" H 58.6"
Wire length: 2 m / 78"

Item no. 00453



Item no. 00454



LIUKU PENDANT, BALL & DROP
Designed by Maija Puoskari



UL Certified
Solid Linden wood, FSC certified
Natural Matt Lacquered
Textile cord
GU10 — LED Max 9W
Ø 140 mm / Ø 5.5"
Ø 140 mm H 195 mm / Ø 5.5" H 7.6"

Item no. 02901



Item no. 02902



LIUKU PENDANT, BALL W/ SHADE
Designed by Maija Puoskari



UL Certified
Solid Linden wood, FSC certified
Natural Matt Lacquered
Glass shade, mouth blown, Textile cord
Transparent / Smoked / Violet gradient
GU10 — LED Max 9W
Ø 195 mm H 345 mm / Ø 7.6" H 13.5"

Item no. 02901
Shade no. 02911



Item no. 02901
Shade no. 02912



Item no. 02901
Shade no. 02913



LIUKU PENDANT, DROP W/ SHADE
Designed by Maija Puoskari



UL Certified
Solid Linden wood, FSC certified
Natural Matt Lacquered
Glass shade, mouth blown, Textile cord
Transparent / Smoked / Violet gradient
GU10 — LED Max 9W
Ø 195 mm H 405 mm / Ø 7.6" H 15.9"

Item no. 02902
Shade no. 02911



Item no. 02902
Shade no. 02912



Item no. 02902
Shade no. 02913



LIUKU PENDANT, BALL & DROP
Designed by Maija Puoskari

Item no. 02903

Item no. 02904



UL Certified
Solid linden wood, FSC certified
Black Lacquered
Black textile cord
GU10 — LED Max 9W
Ø 14 cm / Ø 5.5"
Ø 14 cm H 19,5 cm / Ø 5.5" H 7.6"



LIUKU PENDANT, BALL W/ SHADE
Designed by Maija Puoskari

Item no. 02903
Shade no. 02911

Item no. 02903
Shade no. 02912

Item no. 02903
Shade no. 02913



UL Certified
Solid linden wood, FSC certified
Black Lacquered
Glass shade, Black textile cord
Transparent / Smoked / Violet gradient
GU10 — LED Max 9W
Ø 19,5 cm H 34,5 cm / Ø 7.6" H 13.5"



LIUKU PENDANT, DROP W/ SHADE
Designed by Maija Puoskari

Item no. 02904
Shade no. 02911

Item no. 02904
Shade no. 02912

Item no. 02904
Shade no. 02913



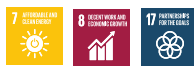
UL Certified
Solid linden wood, FSC certified
Black Lacquered
Glass shade, Black textile cord
Transparent / Smoked / Violet gradient
GU10 — LED Max 9W
Ø 19,5 cm H 40,5 cm / Ø 7.6" H 15.9"



FIREFLY PENDANT
Designed by José de la O

Item no. 02401

Item no. 02411



UL Certified
Steel, Copper / Black plated top
Glass, partly sandblasted
Black textile cord
GU10 — LED Max 9W
Ø 10,8 cm H 47,5 cm / Ø 4.2" H 18.7"



RAY PENDANT, SMALL
Designed by PEDERJESSEN

Item no. 02501

Item no. 02502



UL Certified
Oak wood, FSC certified
Steel, White / Black painted, Textile cord
GU9 — LED Max 10W (Bulb not included)
Ø 119 mm / Ø 4.6"
Wire length: 2 m / 78"



RAY PENDANT, MEDIUM
Designed by PEDERJESSEN

Item no. 02503

Item no. 02504



UL Certified
Oak wood, FSC certified
Steel, White / Black painted, Textile cord
GU9 — LED Max 10W (Bulb not included)
Ø 150 mm H 125 mm / Ø 5.9" H 4.9"
Wire length: 2 m / 78"



SHADE LIGHT PENDANT, SMALL
Designed by Space Copenhagen

Item no. 00204



Aluminium, hand spun
Black powder coated
Textile cord
E27 — Max 9W LED/energy saving
Ø 400 mm H 205 mm / Ø 15.7" H 8"



SHADE LIGHT PENDANT, LARGE
Designed by Space Copenhagen

Item no. 00201



Aluminium, hand spun
Black powder coated
Textile cord
E27 — Max 9W LED/energy saving
Ø 600 mm H 305 mm / Ø 23.6" H 12"



Mater Collection | Material overview

BEECH WOOD,
FSC CERTIFIED



Dark Stained



Black Stained



Sirka Grey Stained

MANGO WOOD,
FSC CERTIFIED



Natural Matt
Lacquered



Black Stained



Sirka Grey Stained

LINDEN WOOD,
FSC CERTIFIED



Natural Matt
Lacquered



Black Stained

OAK WOOD,
FSC CERTIFIED



Natural Matt
Lacquered



Black Stained



Sirka Grey Stained



Soaped



Dark Stained

Mater Collection | Material overview

LEATHER



Ultra Brandy



Ultra Cognac



Ultra Black



Mustang



Whiskey



Natural



Black

ALUMINUM



Polished



Black Coated

METAL



Brass



Black coated



Copper plated

STAINLESS STEEL



Brass polished

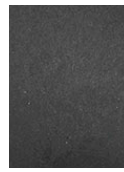


Stainless Steel
Polished

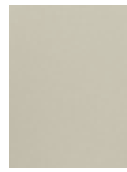
Mater Collection | Material overview

UPCYCLED FISHING NETS

Variation will occur due to upcycled materials



Black,
Ocean Collection



Sand,
Ocean Collection



Black,
Nova Sea Chair

**UPCYCLED COFFEE SHELLS
& INDUSTRIAL PLASTIC WASTE**

Variation will occur due to upcycled materials



Coffee Waste Dark



Coffee Waste Light

**UPCYCLED BEER WASTE (MASK)
& INDUSTRIAL PLASTIC WASTE**

Variation will occur due to upcycled materials



Beer Waste

PAPER CORD



Black

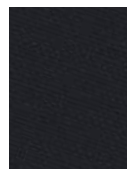


Natural

UPCYCLED TEXTILE



Re-wool,
Kvadrat



Cura,
Gabriel



Re-wool Molly 2,
Kvadrat Textile



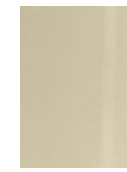
CURA 64195,
Gabriel® Fabrics

Mater Collection | Material overview

GLASS, BOROSILCATE



Transparent



Smoked



Violet



Opal white

Designers

Our external base of commissioned designers includes both established and young design talents. In close collaboration with Mater they interpret the Scandinavian design philosophy to their own unique creations of high quality furniture lighting & accessories, while supporting the UN Sustainable Development Goals.



Jørgen & Nanna Ditzel



ARDE



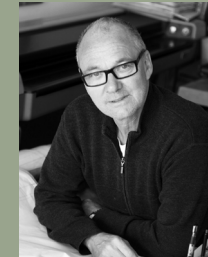
Space Copenhagen



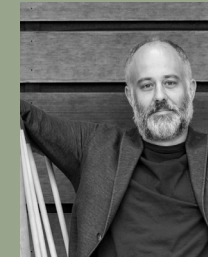
Eva Harlou



Ayush Kasliwal



Tom Stepp



Shawn Place



ByKato



PEDERJESSEN



Michael Dreeben



Jesper K. Thomsen



Sanne Traberg



Maija Puoskari



Jean Francois Merillou



Jose dé la O