

## APP: PoloPrint Pro

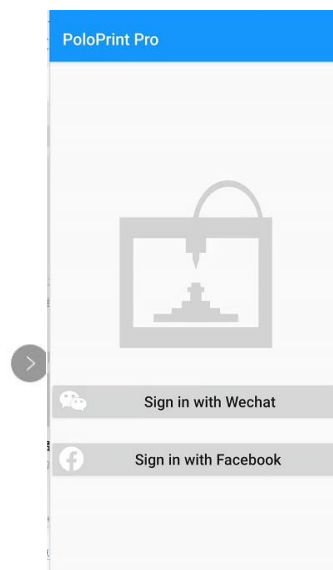
1. Turn on the printer. Turn your phone on WIFI Settings, connect: “ESPWIFIWD \* \* \* \* \*”



2. Download the APP. Click on the "install" , choose“Sign in with Wechat” or “Sign in with Facebook”.

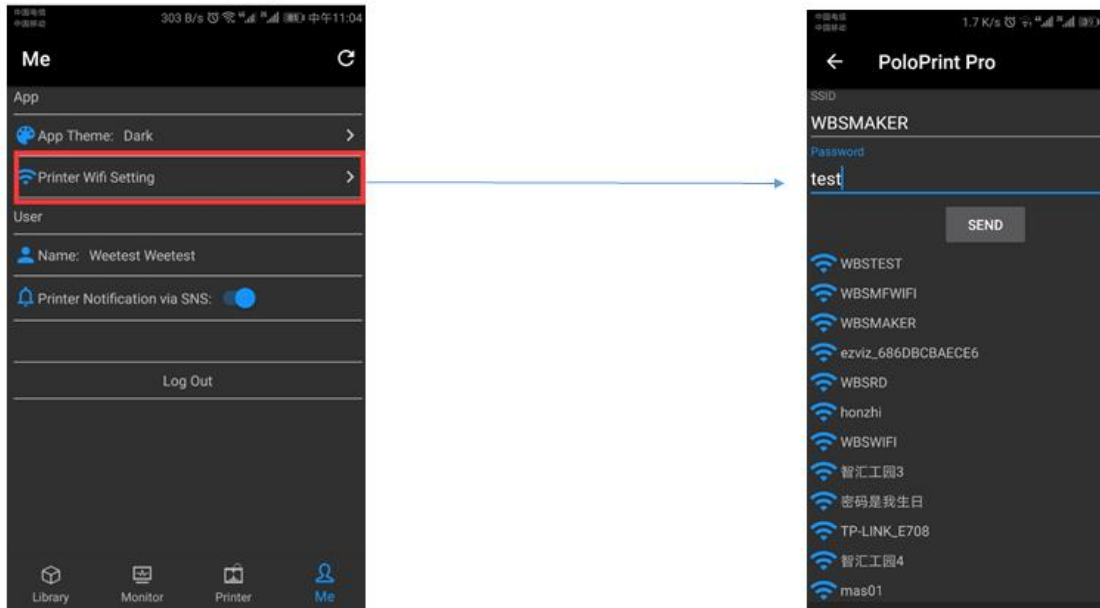


✓  
PoloPrint Pro  
安装成功

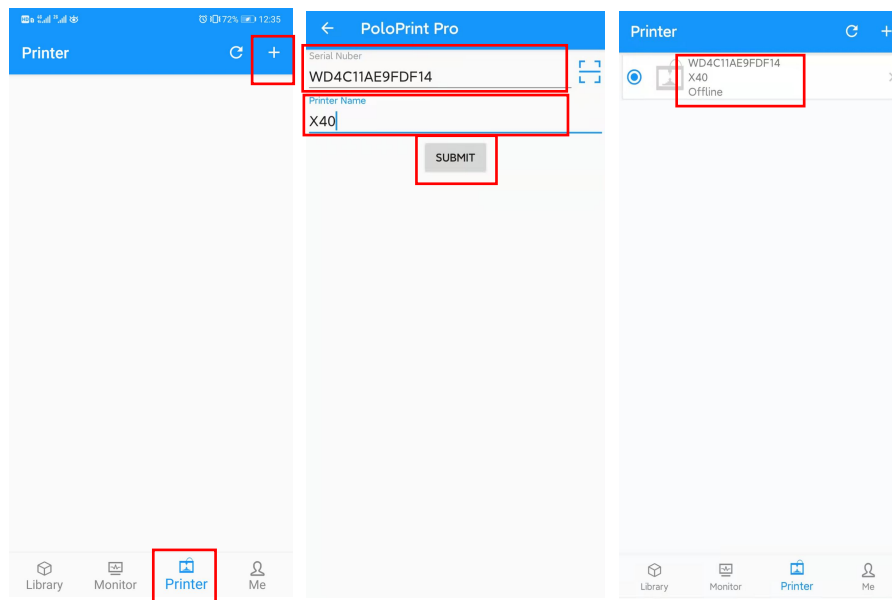


3. Click "Printer wifi Setting", input name and password of your 2.4G wifi, and click "SEND".

## PoloPrint Pro



4 . Click the menu bar "Printer", then click the "+" icon in the upper right corner, add machine serial number and machine name, fill in the machine name at will, click "SUBMIT", at this time the machine is displayed as "Offline" state. Restart the printer and re-enter the APP. At this time, the machine is in online state, indicating that the APP is successfully connected to the machine.



4. Choose the menu bar, click on the "Library" , choose "the Ring" , click on "Print", the "Monitor" menu bar can see platform temperature, nozzle temperature information.

