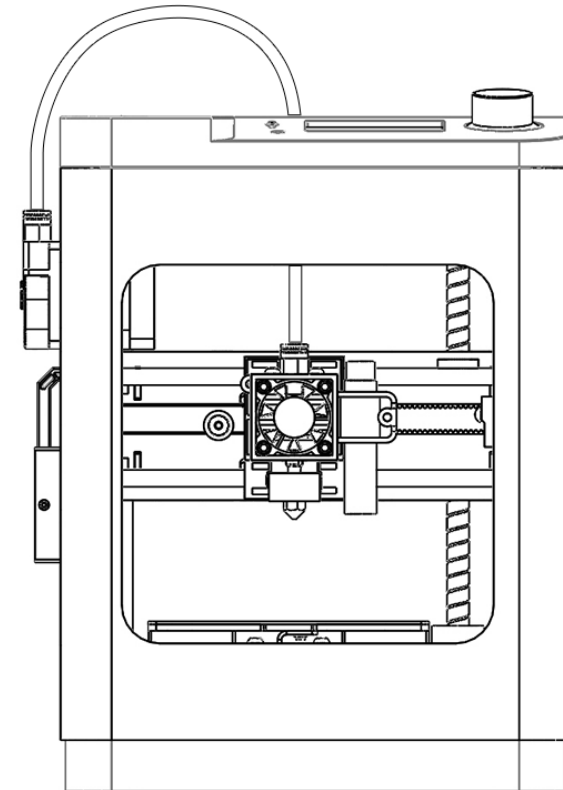
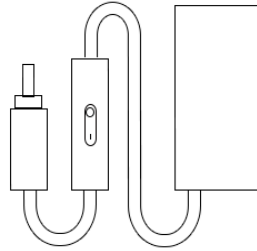
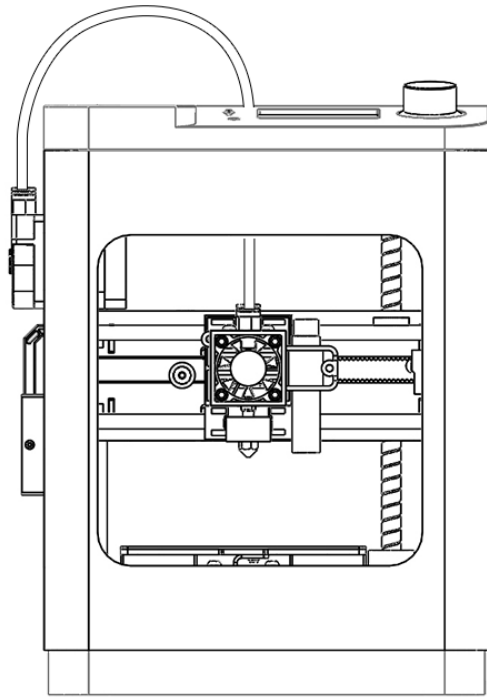


TINA 2 Basic

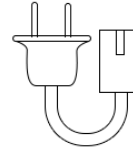
unpacking guide



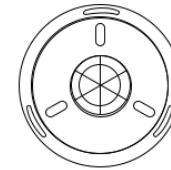
| Accessories



power adapter



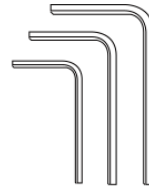
power cable



filament



8mm
wrench



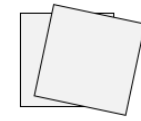
1.5/2.0/2.5mm
L wrench



0.4mm
nozzle



Type-C



sticker



card reader



TF card

test models
software
manual and video

| Specification

Model TINA2 Basic	Product Volume 210*210*290 mm	Build Volume 100*105*100 mm	Motherboard R72B
Weight 2.8Kg/6.2lb	Nozzle Diameter 0.4mm	Power Supply 100V- 240V/12V@5A,60W	Platform Soft magnetic plate
Nozzle Temp ≤245°C	Speed ≤200mm/s	Input TF Card This version does not support WiFi / USB	
Layer Thickness 0.1~0.4mm	Printing Precision ±0.1mm	Leveling 3 points Auto Leveling	Environmental 15°C - 25°C

| Software

Slicing Software Wiibuilder (WIN/macOS) Cura (WIN/macOS)	Slice Input File STL/OBJ/AMF	Printing File Gcode
---	--	-------------------------------

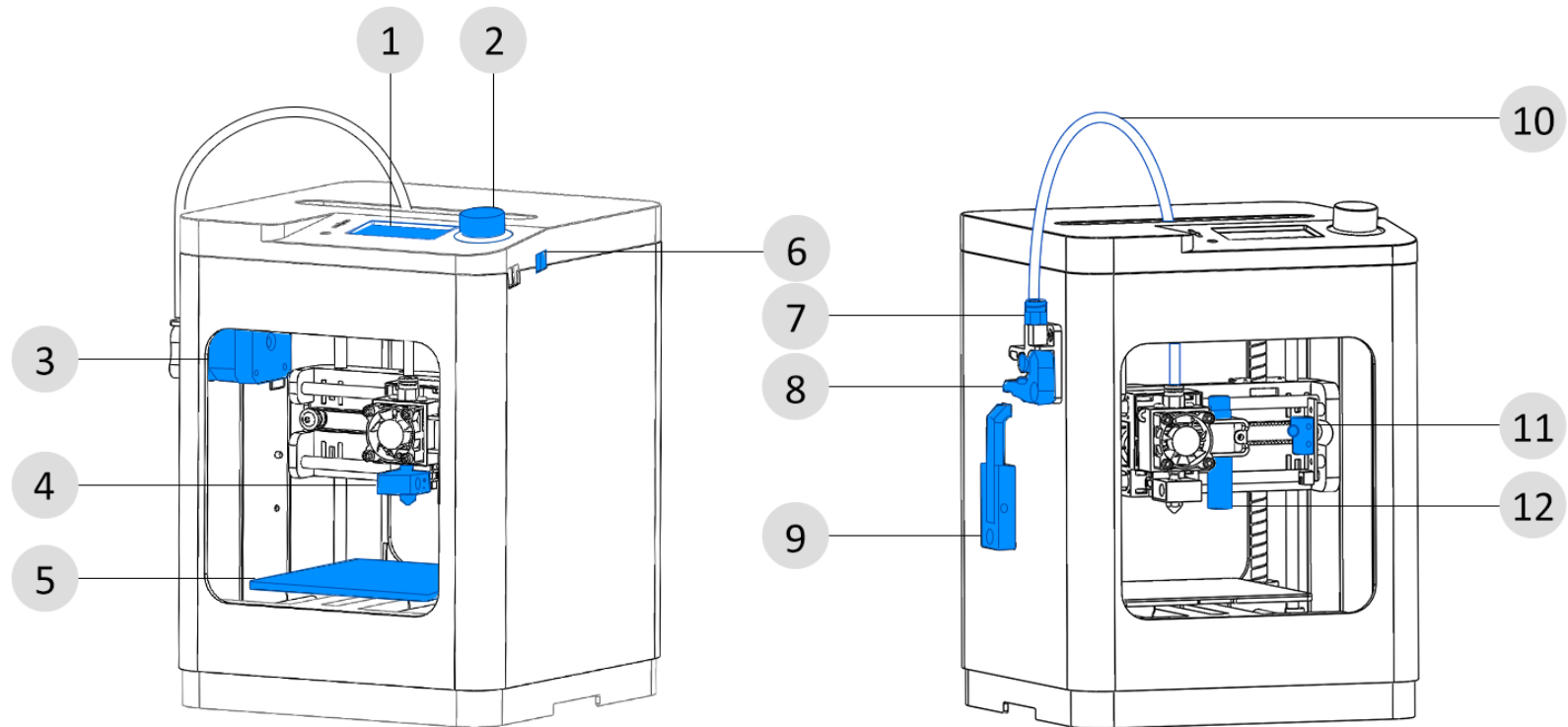
| Filament

Filament Type PLA / PLA+ / TPU	Filament Diameter 1.75mm	Filament Temperature <230°C	Filament on Holder ≤500g
--	------------------------------------	---------------------------------------	------------------------------------

Please use the filament provided by our company. Filaments have different specifications, which can clog and damage the nozzle. If the 3D printer fails due to the 3-party, the warranty will not be granted.

If the filaments are not used for a long time, please keep them sealed.

| Product overview



1. Screen

2. Knob Button

3. Motor

4. Hotend

5. Platform

6. Power Socket

7. Tube Fitting

8. Extruder

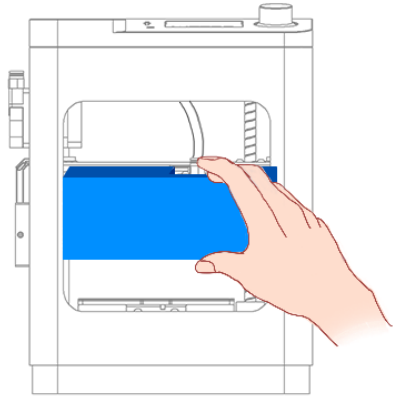
9. Filament Holder

10. Filament Tube

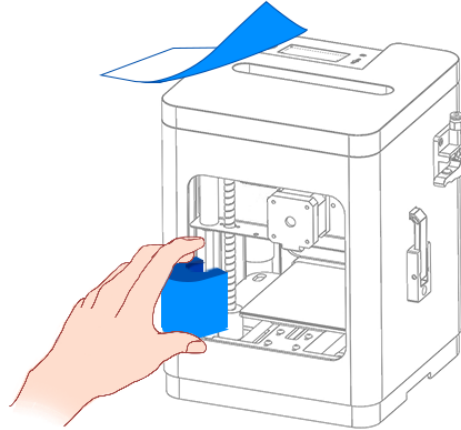
11. X Endstop

12. Proximity Sensor

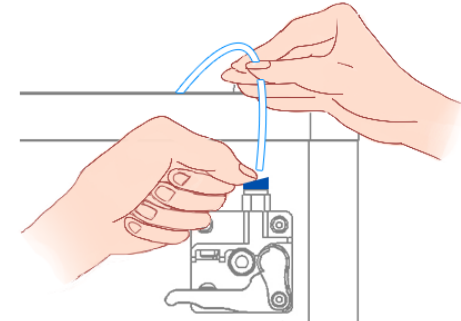
| Unpacking



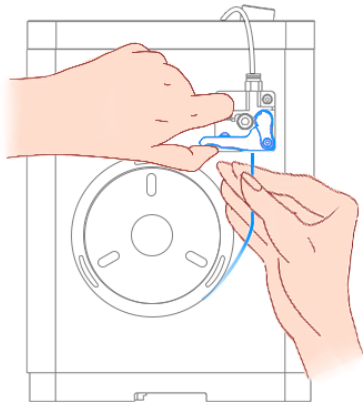
1. Unpack and remove foam.



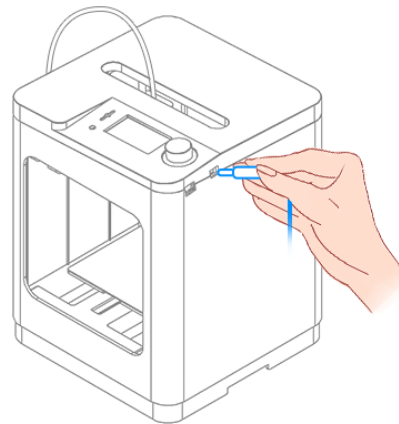
2. Remove the tip and shaft coupling shell.



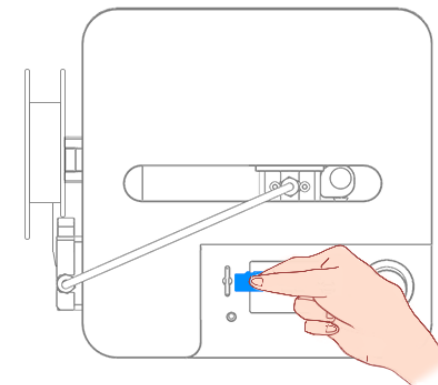
3. Press tube fitting to insert filament tube into extruder.



4. Press the extruder switch, straighten filament and insert it, until entering nozzle.

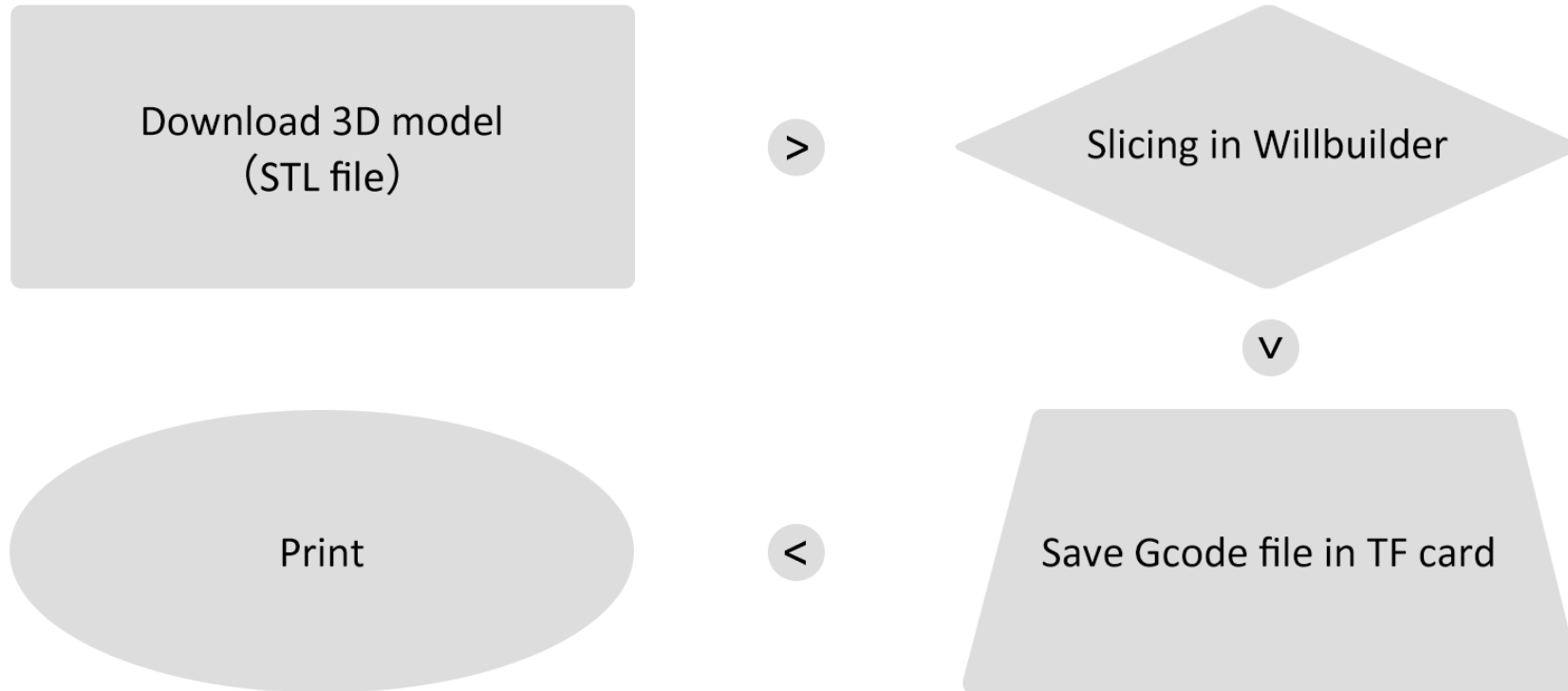


5. Plug in the power and turn on the printer.



6. Insert the TF card and start printing the test model.

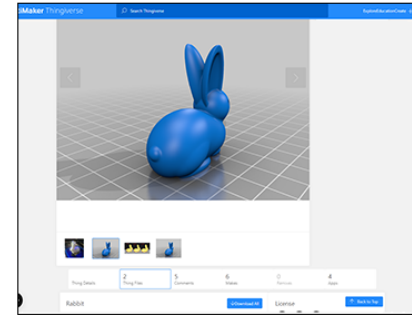
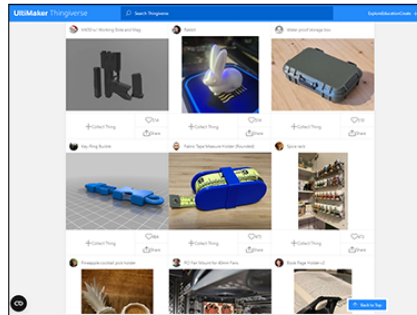
| 3D printing flow chart



Note:

1. Slicing software needs to be installed on the computer.
2. Willbuilder is a slicing software developed by our company. Recommended Willbuilder.

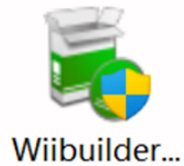
① How to download more models?



1. Recommended **【Thingiverse】** .

2. Select the model you want and download the STL file.

② How to slice with **Wiibuilder**?



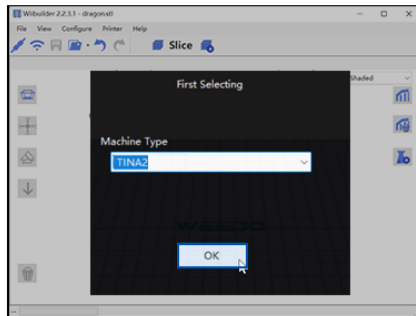
1. Download and install Wiibuilder on your computer.



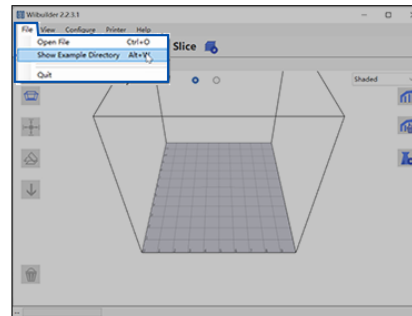
macOs cannot verify the developer of "Wiibuilder".

Note:

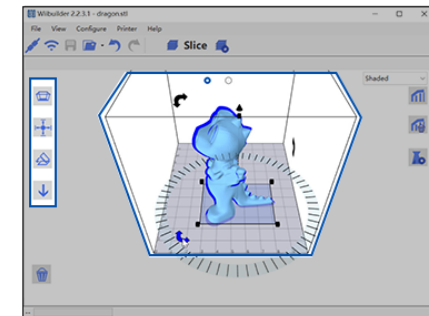
1. The installation has been stored in the TF card.
2. Mac may need to open **Security & Privacy**



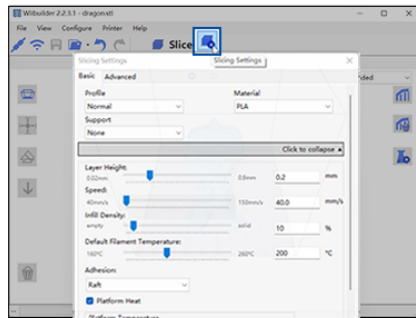
2. Open the Wiibuilder.
Select the printer.



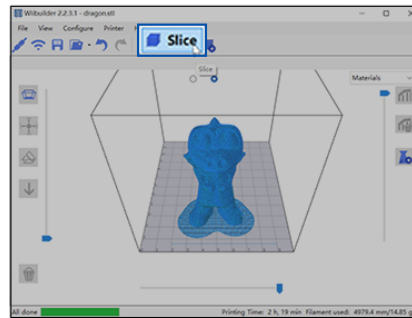
3. Click "File" to load the model,
or drag the model to it.



4. Click and adjust the model.



5. Set slicing parameters .

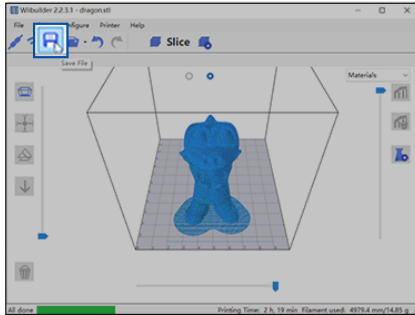


6. Click "Slice" .

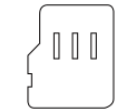
Note:

1. Pay attention to slice parameters such as support.
2. For detailed slicing instructions, please refer to user manual in the TF card.

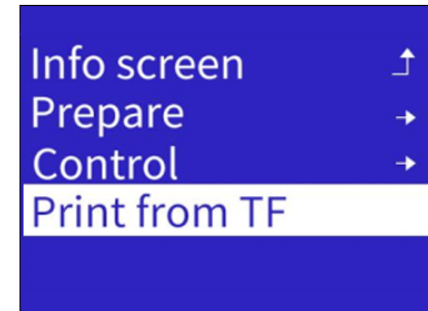
③ Save Gcode file in the TF card and print



1. Click "Save File".



TF card

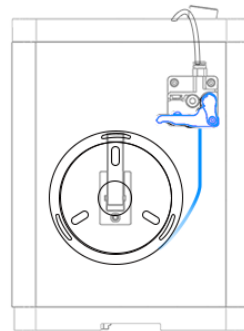


3. Insert the TF card into TINA2 Basic. Print the file.

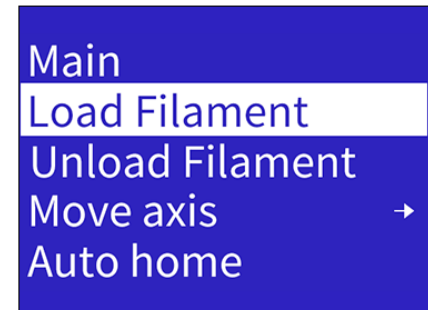
④ How to change the filament?



1. Unload filament.



2. Change filament and insert it, until entering nozzle.



3. Load filament.

Note:

All operations can view the video in the TF card.

| Common question

① Why is the nozzle clogged or no filament out ?

The nozzle will be clogged due to the damp filament, so the nozzle should be cleaned regularly. You can view the video of cleaning the nozzle in the TF card.

② Why the model doesn't print well ?

The printing is related to the Z-offset, temperature, printing speed, support and etc. You can check out the tutorial on adjusting the Z-offset and learn more about slice parameters.

③ What should I do if the device fails ?

Please contact after-sales service Whatsapp +86 18936012338.

④ How to get more knowledge about 3D printing ?

For detailed user instructions and installation, please refer to user manual or video in the TF card. You can contact after-sales service or visit Wiki website.