

**VORSPRUNG®**



**MULTI-FUNCTION JUMP STARTER  
USER MANUAL**

Please read this manual carefully before use.

Model: 20154

**Please read this manual carefully before using and keep it for review.**

This manual will help you to operate the device properly and safely, but it should not be used as a guide for any software or hardware reconfigurations.

**UNIT'S SAFETY RECOMENDATIONS:**

- Do not open this unit. Opening might break or damage its components and void warranty.
- Do not place unit in high intensity magnetic fields, it might move components out of place.
- Avoid wet conditions, this is not a waterproof product.
- Try to avoid impact situations, if kept in truck try to keep stored into the included soft case, continuous road vibration might affect.
- if kept in your vehicle, try to keep the product in the soft case which is included with the product, as continuous vibrations from the road may be detrimental

**JUMP STARTER'S HEALTH AND MAINTENANCE:**

- Recharge the unit every three months, even if it hasn't been used, in order to preserve the battery life.
- At the end of the products life, make an effort to dispose of it sustainably, by recycling or providing it to a company who specialise in battery disposal.
- When using, keep negative and positive poles apart to prevent short circuit of the unit.
- Operating temperatures between -20°C to 70°C.

**FROZEN CAR'S BATTERY:**

Car batteries are designed to hold charge and liquid properties in subzero conditions, but if your battery is not properly charged it might freeze in subzero conditions.

How to check? Inspect the battery for any signs of ice. Remove it from the vehicle, shake it gently and listen for liquid movement, or lack thereof. If you can't hear anything, the battery is likely frozen.

Bring battery into a warmer area until acid is back to liquid state. If in a hurry you can place battery on top of warm water without covering it, just up to 1/3 of height.

Inspect the battery for cracks. If the casing is damaged then you must go to a professional and have it replaced. If there are no cracks, then let the battery thaw out in a warmer place, and when it is fully thawed, try it in the vehicle. Do not attempt to accelerate the thawing process. Even after fully thawing, it is likely to need recharging before ready for proper use.

**[1] Appearance Instruction**



Figure-1 Product appearance instruction

- 1 EC5 vehicle starting output/dust cover
- 2 ON/OFF
- 3 Type-C input
- 4 USB output 5V/2A
- 5 DC output 12V
- 6 USB output 5V/9V-2A

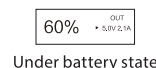
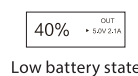
**[2] Button Function Description**

**Battery capacity query key:** When the unit is off, press to start the unit. The battery capacity indicator will display the current capacity. If the unit is not connected to any devices or vehicles, after a short while it will turn itself off.

**Light mode:** Press the button for three seconds to turn the LED light on, and press it for another three seconds to turn it off. While it is on, short pressing the button will allow it to switch from a steady torch, to SOS, to flashing mode.

**Check the battery starting capacity**

- Before connecting to the car, please switch the unit on and check the battery percentage.
- Please do not use the unit to start your car if the charge is less than 40%.
- Please charge the unit before using it to start your car.

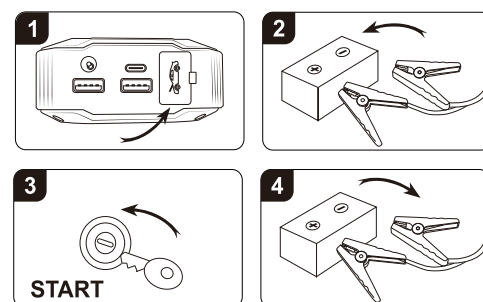


**How to use this product to start vehicle**

This product should be used to start vehicles when the vehicle battery is dead, or is subject to low temperatures which prevent it from starting.

**Instructions:**

- 1) Open the dust cover and insert the output cable of the ignition clips into the "EC5 Vehicle Starting Output" port.
- 2) Clip the red ignition clamp onto the positive anode. (The positive anode of the clip is red, and negative anode is black)
- 3) Once the clips are connected, press the power button on the Jumpstarter and then start your vehicle
- 4) After starting, please removed the ignition clip attached to the vehicle battery.



**Note:** The product will not work properly if the clips are not connected in the correct manner.

**[3] How to charge the product and use the output function**

**Product charging:** It supports Type-C USB 5V/A and DC12V/10A charging. Please select the corresponding connection line to recharge the product, so as to avoid damaging the product.

**USB output:** Please try and use the original USB data line for each device that you're trying to charge.

**Specifications**

USB output	USB:5V/9V-2A
Input voltage	Type-C USB: 5V/9V-2A
DC output	DC 12V-10A
Charging time	6 hours
LED power	1W
Working temperature	-20°C~70°C
Product size (LWH)	175 x 90 x 40 mm

**WARRANTY CARD**

This product provides customer maintenance service 12 months after purchasing

Product Model		Manufacturing No.	
Purchase Date		Maintenance Date	
Customer Name		Contract Number	
Customer Address			
Sales Unit			

Abnormal phenomenon description of the product

Safeguard conditions: Please show this warranty card and fill in corresponding content in detail when in need of maintenance service. Our company provides 12 months warranty period from the date of purchase.

**Warranty Scope**

- 1) Product quality problems occur due to normal usage conditions.
- 2) Product damage due to operation error is beyond the warranty scope.
- 3) No warranty is provided to disassembled product.
- 4) No warranty is provided to products with torn labels. Our company will provide maintenance service to products beyond the warranty scope, and maintenance cost shall be borne by customers.