

尺寸：96x180mm

GREEN PHOTOTHERAPY · WAY TO HEALTH

HANDHELD PAIN RELIEF LASER INSTRUMENT



USER MANUAL

CONTENTS

CAUTION	01
PRODUCT INTRODUCTION	01
PRODUCT STRUCTURE	02
APPLICATION RANGE	03
USAGE METHOD	04
OPERATION INSTRUCTION	04
CONTRAINDICATION	09
SPECIFICATION	09
DISCLAIMERS	10
PRODUCT LIST	11
THERAPEUTIC THEORY	11

CAUTION

This device is a class 3R laser. Please read the instruction booklet before use.

1. Avoid direct eye contact with the laser.
2. Keep away for children.
3. The device should be used in strict compliance with the safety and operating precautions provided in this manual.
4. The device shouldn't be used by pregnant women, cancer patients and hemorrhagic patients.
5. If the user is sensitive to light, set the laser power on low and use only for a 10 minutes duration, twice a day.
6. Do not use on black fur or black hair and moles.

PRODUCT INTRODUCTION

【 Product name 】 handheld laser device for pain relief

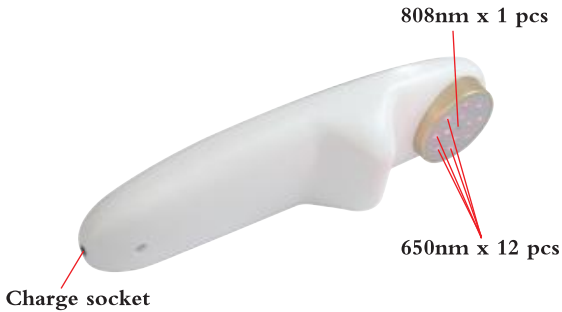
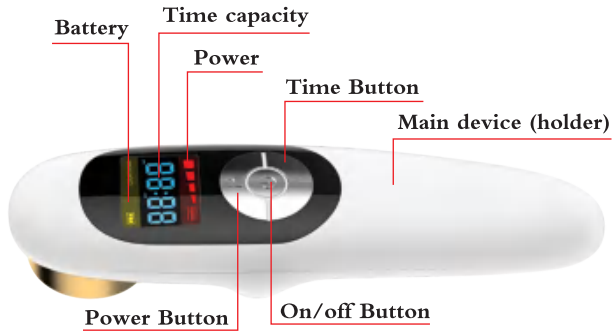
【 Product model 】 GD-P

【 Class of safety 】 Class 3R Laser

【 Safety Assortment 】 II Class internal electric source. BF

【 Therapeutic method 】 Laser extra vascular irradiation therapy

PRODUCT STRUCTURE



Charger



USB Line

APPLICATION RANGE

1. The device is used for humans and animals pain relief, knee arthritis, rheumatoid arthritis, athletic injuries, soft tissue injuries.
2. The laser diminishes inflammation, reduces swelling, wounds, ulcers and helps with osteoporosis conditions.



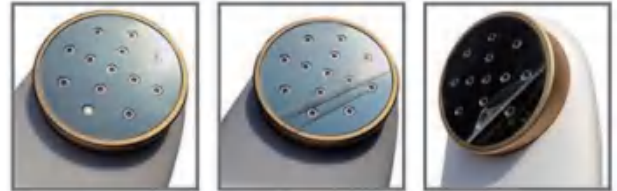
USAGE METHOD

Up to twice per day (morning and evening), 30 minutes each time, 7–10 days for one treatment course. After 7–10 days, stop for one or two days, then continue for the next course. Make sure to stay hydrated during treatment.

OPERATION INSTRUCTIONS

1. Preparation before treatment: Use warm water to clean skin first then dry the area. Avoid dark hair, moles, or birth marks.
2. Turning on: Turn on the laser by pressing the power key for 2 seconds until the screen display and turns on.
3. Selecting treatment time: Press the "T" button to choose between 10 to 30 minutes cycles.
4. Selecting treatment power: Press the "P" button – there are four intensities to choose from.
5. Start treatment: Short press the "On/Off" button to start the treatment. You will see the laser probes begin emitting light. Hover above the area you want to be treated.
6. Turning off: Press the On/Off button for 2 seconds until the indicator light turns off and the screen displays turns off.

7. Charging: The device has a built in lithium–ION battery. It will emit a beeping sound when the battery is low. Plug the unit in to recharge. It takes 8–10 hours to fully charge.



You can remove the film or keep it for surface protection

Notice:

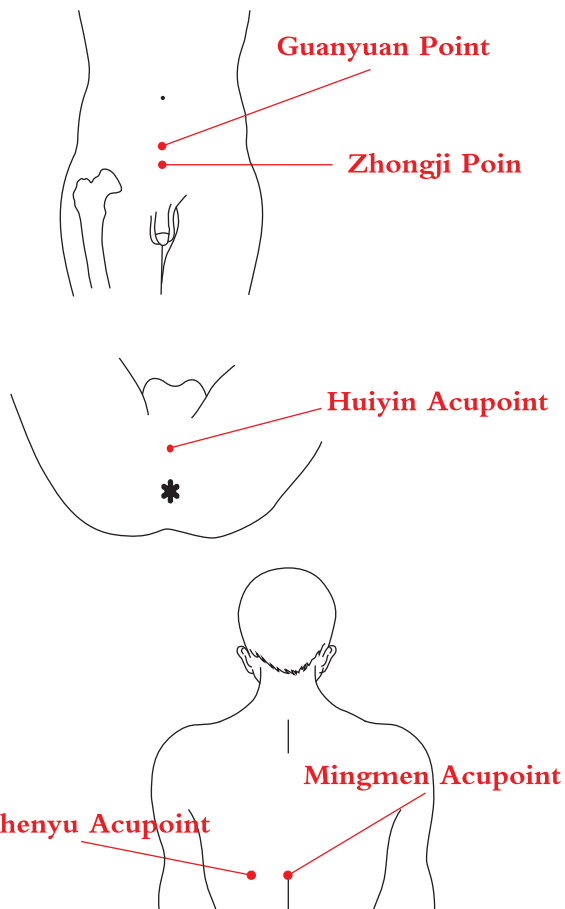
1. Do not use the laser while it is charging.
2. If you feel discomfort – stop treatment.
3. If you feel any uncomfortable, please just remove the device to stop treatment.
4. The 808nm laser beam in the middle is a non–visual light. You will not see it when operating the laser.



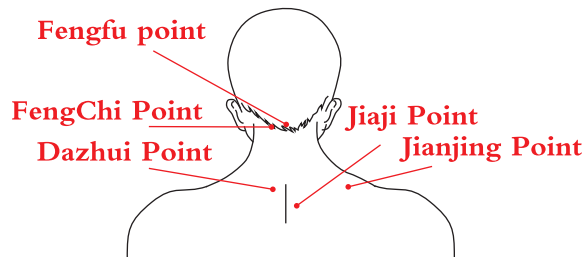
Body pain relieve correspond acupoint

Tips: Use the laser beam on these three acupoints to irradiate 15–30 min twice a day.

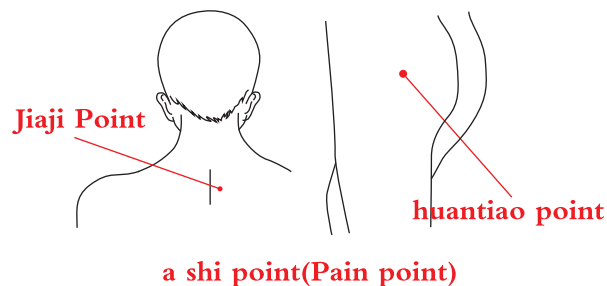
1: Prostatitis



2: Cervical spondylosis

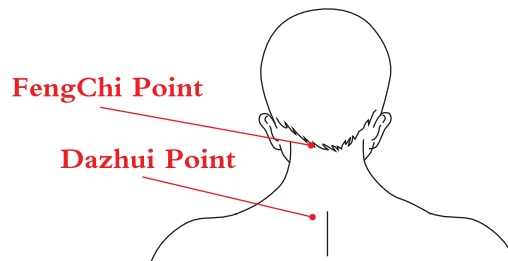


3: Lumbar disc of herniation

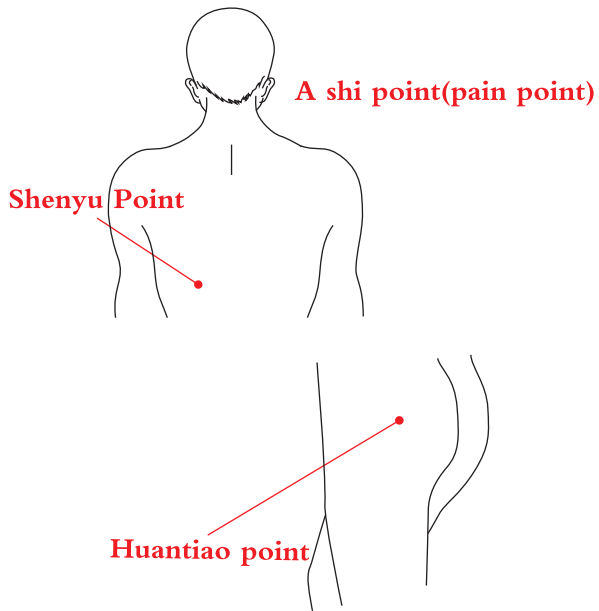


4: Arthritis

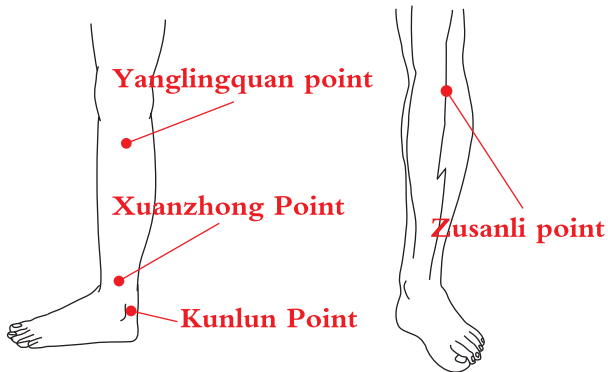
The Arthritis for Lumbar vertebra



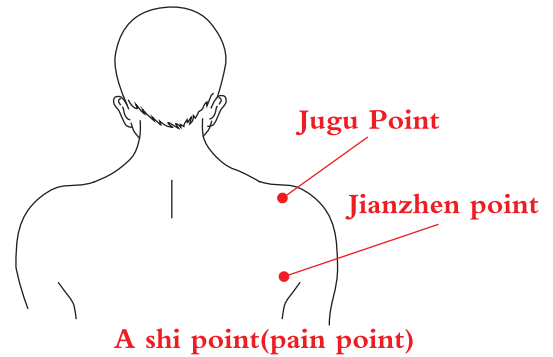
The Arthritis for Lumbar vertebra



Knee Arthritis



5: Frozen shoulder



CONTRAINDICATIONS

Do not use this laser on people who are pregnant, have cancer, or hemorrhagic diseases.

SPECIFICATION

Laser wavelength: 650nm \pm 20nm 810nm \pm 20nm
A single laser output maximum power: 5mW \pm 20% 150mW \pm 20%
Terminal laser output mode: Continuous
Terminal laser output instability: $\leq \pm 10\%$
Timing range: 10min~30min can choose
Display mode: Liquid crystal display
Power source: Lithium-ION battery with 1800 mAh capacity
Battery voltage: 5v DC
Input power: $\leq 10VA$
Working environment: Temperature 5 $^{\circ}C$ ~40 $^{\circ}C$
Relative humidity $\leq 80\%$

DISCLAIMERS

1. This product is a 3R laser. It can create glitz, flash blindness and after images. It can cause temporary visual impairment and may create a security hazard for users who operate heavy machinery.
2. When operating a 3R laser avoid shining the light into the eyes.
3. Please do not put the instrument in a wet , high temperature, direct sunlight, strong magnetic and not nearby strong microwave field.
4. Keep out of reach of children.
5. Please be gentle with the device. Avoid tossing throwing and putting pressure on the device.

PRODUCT LIST

After the user opens the therapeutic instrument package, the following components should be checked:

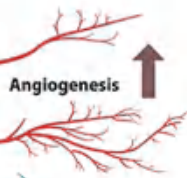
NAME	QUANTITY
Main machine	1
Product user manual	1
USB cable	1
Charger	1

THERAPEUTIC THEORY

Handhold type pain relief laser equipment is a low level laser therapy (LLL) device, also known as a soft laser. LLLT is a light source treatment that generates a coherent light of a single wavelength. It emits no heat, sounds or vibration. The laser's energy is used to penetrate the skin and stimulate the body's natural healing processes, by this way, every cell in the treatment area received the energy activate deep tissue repair, Laser irradiation can diminish inflammation to edema fluid, accelerate the secretion of analgesic substance and reduce the sensitivity of the peripheral nerve.

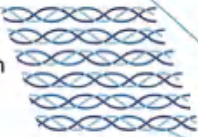
↑ Angiogenesis & Neovascularization

An increase in oxygenated blood to the injured tissue accelerates tissue healing.



↑ Collagen Production

Proper alignment and remodeling of collagen reduces internal scar formation and enhances tissue elasticity.



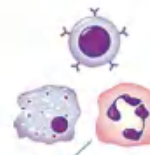
↑ Muscle Regeneration & Muscle Atrophy

Repair of damaged muscle fibers and activation of myogenic satellite cells leads to regeneration of muscle tissue.



↓ Inflammation & Edema

Increase in inflammatory mediators such as macrophages, neutrophils and lymphocytes accelerates and resolves the inflammatory process.



↑ Nerve Regeneration

Proliferation of growth factors promotes neuronal sprouting and myelin formation for optimal nerve recovery.



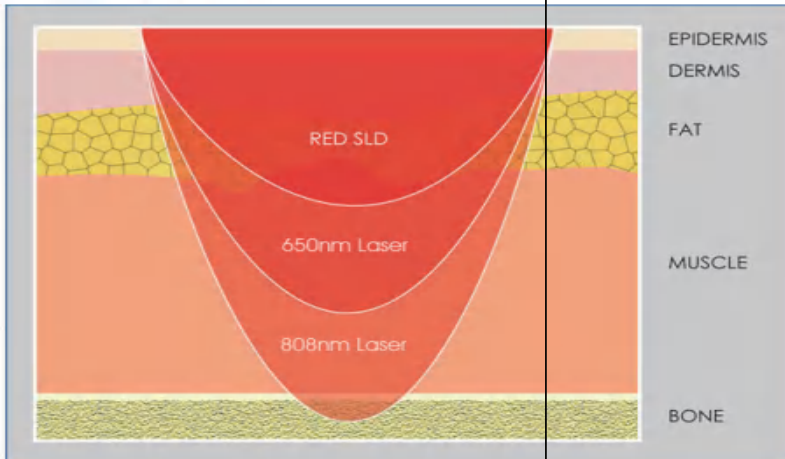
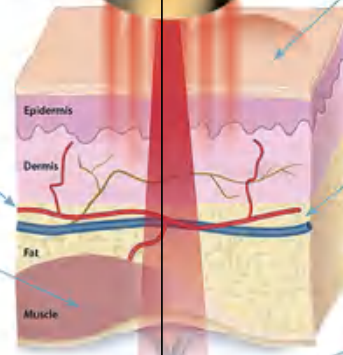
↑ Cartilage Production

Increase in chondrocyte and collagen production allows for improved cartilage deposition and joint function.



↑ Bone Formation

Proliferation of osteocytes and remodeling of bone extracellular matrix results in accelerated bone repair.



The 808nm infrared laser penetrates the skin up to 5-7 cm and targets the pain relief in the deep area.

The 650nm red laser penetrates the skin up to 2-3 cm, improves blood circulations and reduces inflammation.

808nm+650nm treatment combined will show better curative effects for pain relief.