

**In Common With**

Ceramic Spot Pendant  
*Technical Specifications*





# Ceramic Spot Pendant

## Technical Specifications

Materials	Ceramic, steel or brass
Product weight	2 lbs
Lead time	12 weeks
Bulbs included (1)	E12 / 110 V / 3.0 W / 180 lm 2700 K / dimmable
Dimmer	TRIAC
Suspension type	Cord
Max wattage	10 W
Certifications	UL listed, damp-rated

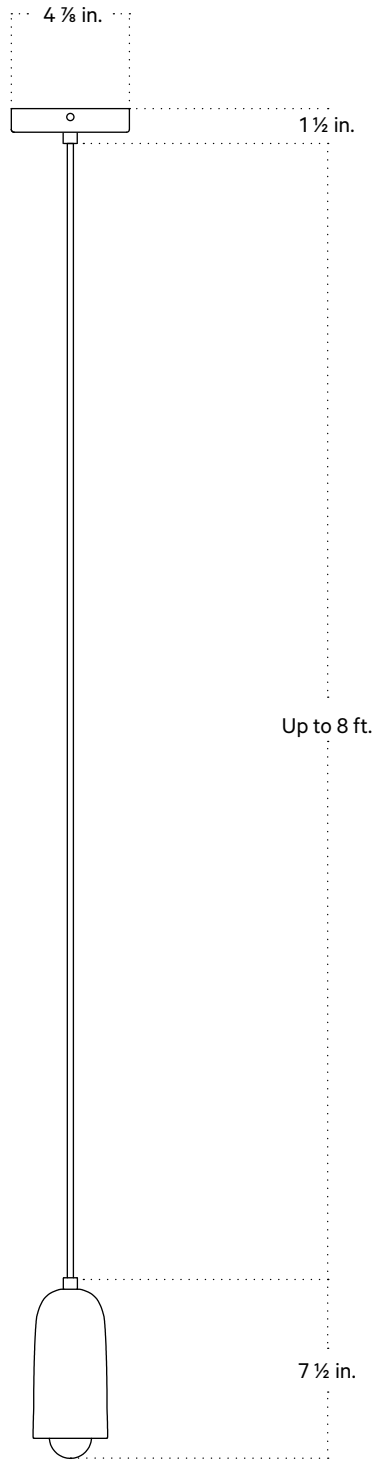


## Notes

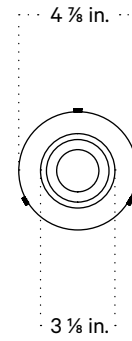
1. This fixture comes with 8 feet of cord that can be shortened at time of installation.
2. Pendants with black, oxide red, reed green, or peach hardware come with a black cord.
3. Pendants with bone hardware come with a white cord.
4. Pendants with brass, patina brass, blackened brass, or pewter hardware come with a chocolate brown fabric cord.
5. Custom cord color can be specified for an additional cost; please inquire.
6. This fixture can be installed on a vaulted or sloped ceiling.
7. This fixture has handmade elements and may exhibit variability within the same piece. These variations are inherent in the production process and are not to be considered as defects. We do our best to maintain a consistent product while honoring handmade craftsmanship.
8. Dimensions may vary within one inch.

Updated February 28, 2023

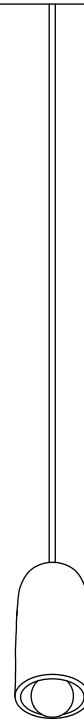
Front View



Bottom View



Isometric View



## Finish Options

*Brass, glass, and ceramic samples made or finished by hand may exhibit variability. Available for purchase at [incommonwith.com/finishes](http://incommonwith.com/finishes).*

---

### Ceramic



Tan Clay



White Clay



Terracotta



Green Clay



Black Clay

---

### Painted Metal



Black



Bone



Oxide Red



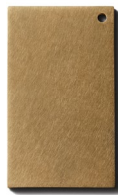
Reed Green



Peach

---

### Brass



Brass



Patina Brass



Blackened Brass



Pewter