

# SPARTAN SHOP

## BLOCK SCONCE



---

Two pieces of cast metal connected by a concealed mount – a small front plate projects light both onto and upwards from a rear plate. Emits soft ambient light.

Made of solid cast polished bronze, blackened bronze, or aluminum.

---

### Measurements

14.75" tall  
13.78" wide  
4.13" deep

### Bulb Type \*Bulb not supplied

3.3W LED, E12 base, G16 shape  
Suggested Lumen Rating: 250lm  
Voltage: 110-120V / 60Hz AC  
Dimmability: Bulb dependent

### Cord Type

10-foot black cloth cord with inline on/off switch and two prong plug.

---

### Materials

The raw metals used will oxidize with age and environment, both of which contribute to the evolution of a natural patina. If the original bright finish of your pieces is preferred, a polishing solution applied with a soft clean cloth will restore luster. Braso or Silvo is recommended depending on the metal in question.

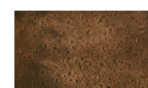
Slight variations will occur from one individual piece to another and may include slight ripples or surface pitting.



**Aluminium**



**Bronze**



**Blackened**

---

# S P A R T A N   S H O P

---

Place of Manufacture

Sydney, Australia.

Certifications

Lamp is assembled of UL listed parts; overall unit is not UL certified.

Please inquire for UL listing options and International wiring availability.

---