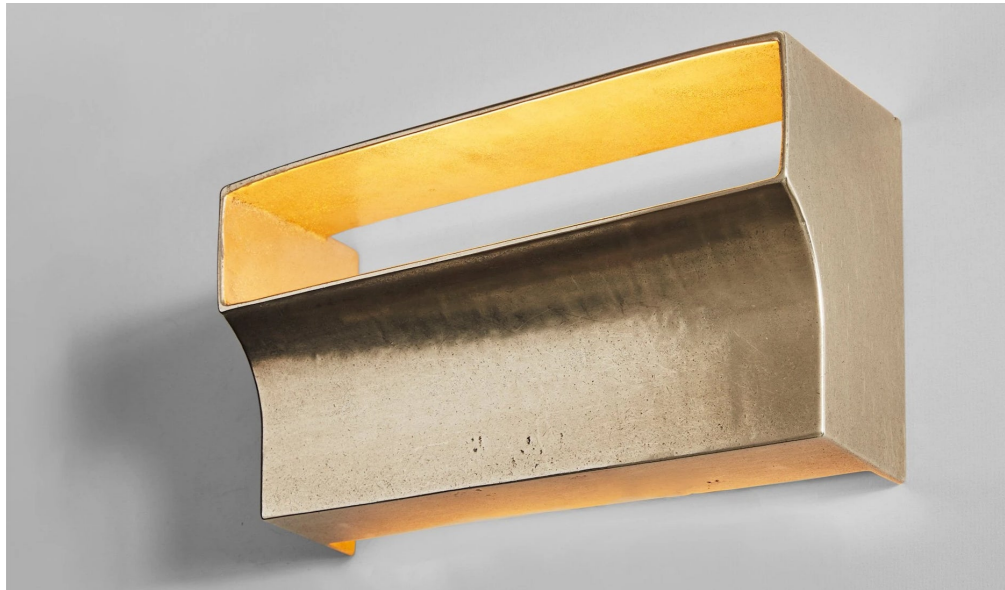


# SPARTAN SHOP

## SCOOP LIGHT



Substantial, architectural sconce with concave rectangular form and large slit openings on the top and bottom to allow light to emit.

Made from cast Brass, Blackened Brass, or Aluminum.

### Measurements

7.1" tall, 13" wide, 4.7" deep.

Weight 10.5 lbs.

### Bulbs (not included)

9W LED max.

Edison Ø26 mm (E26)

Suggested lumen rating 250lm

Wattage - 3.3W Equiv 25w  
incandescent

Voltage 110-120v / 60hz ac

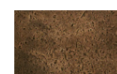
Dimmability- bulb dependent



**Brass**



**Aluminium**



**Blackened**

### Materials

The raw metals used may oxidize with age and environment, both of which contribute to the evolution of a natural patina. If the original bright finish of your pieces is preferred, a polishing solution applied with a soft clean cloth will restore luster.

Braso or Silvo is recommended depending on the metal in question.

Slight variations will occur from one individual piece to another and may include slight ripples or surface pitting.

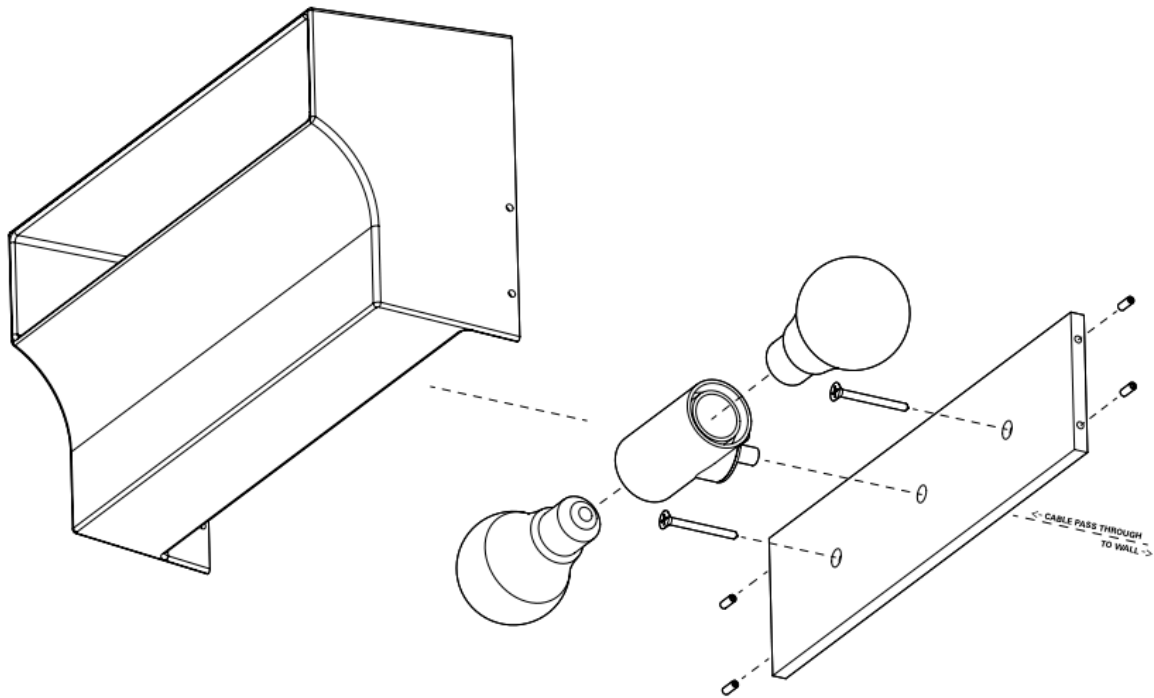
### Place of Manufacture

Sydney, Australia.

### Certification

Lamp is assembled of UL listed parts; overall unit is not UL certified.

# SPARTAN SHOP



---

## Installation

This fixture has a slender mounting surface which requires the use of a mud ring upon installation. Please note that a professional drywall finisher will be required.

---