

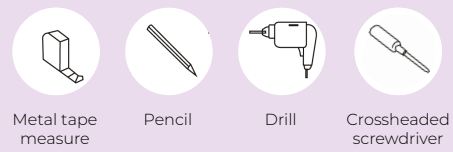
Fitting Instructions:

Roller Blinds

YOU SHOULD HAVE:

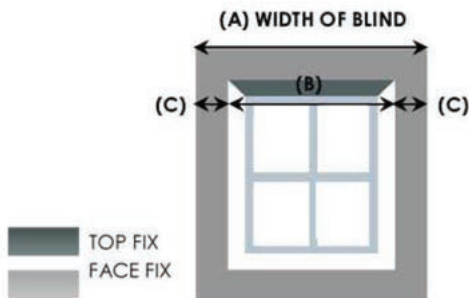


TOOLS NEEDED:



INSTRUCTIONS

1.



Outside Recess

If the blind is to be fitted outside the window ensure that measurement C is the same. C is simply equal to A minus B, divided by two. Follow instructions for FACE FIXING.

Inside Recess

If TOP FIXING, fix to the lintel if the window frame is uPVC or if there are no obstructions. If FACE FIXING, fit bracket to the window frame.

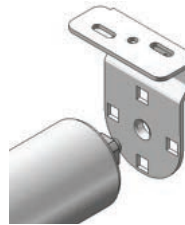
2.

Hold each bracket into place and mark the hole positions. Fit each bracket using 2 screws provided

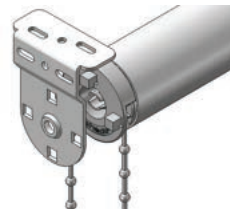


3.

Holding the fully-wound blind, insert the idle pin end into the bracket as shown.

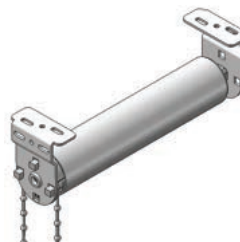


With the idle pin end in place, insert the control end into the opposite bracket. Ensure that the blind has clicked into place using the centre lug.



4.

Gently pull the chain to raise and lower the blind



WARNING

WHERE POSSIBLE BLIND CHAIN SHOULD BE OPERATED FROM JUST ABOVE THE CHAIN CONNECTOR AS THIS PUTS LESS PRESSURE ON THIS COMPONENT, REDUCING THE RISK OF SNAPPING OR PULLING APART.

Fitting Instructions:

Roller Blinds

CHILD SAFETY DEVICES

Warning

Blinds can be potentially dangerous to small children. Please be aware that swallowing small parts can cause internal asphyxiation. Looped or low hanging cords, chains or tapes can create hazardous loops which could lead to the risk of strangulation. We do everything we can to ensure your chosen product is child safe. As a minimum all of our blinds meet the European Standard BS EN 13120 for safety. Our instructions and the supplied Child Safety device(s) are intended for you to ensure that your blind is as safe as possible.

The information below gives guidance for fitting the provided child safety devices. All safety devices must be correctly installed for the protection from strangulation of young children and the proper use of the blind. Please read the instructions carefully and keep safe for future reference.

Only use the devices and cords provided with your blind. Videos showing how to fit and reconnect child safety devices are available, along with replacements at www.makeitchildsafe.co.uk.

Sidewinder Roller

Fitting the safety hook

1. Put the control chain into the hook at the maximum distance from the control mechanism. Ensure that the chain is taut and that the hook is at the bottom of the loop.
2. Screw the hook to a wall adjacent to the blind. If the hook has a slot, ensure the screw is placed at the bottom of the slot and that the chain is taut before screwing in place. This will prevent the hook from moving up and down during operation and ensure that the correct tension is maintained. See right picture.

