

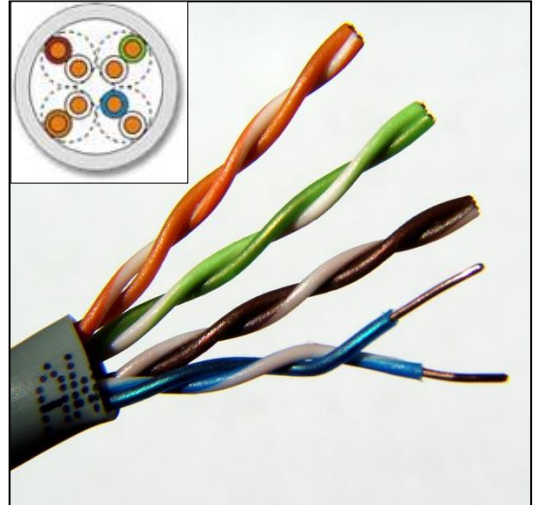
DATA SHEET COPPER CABLE

DATA SHEET: UTPCAT5eSolid-02

UTP CAT 5e (Enhanced) EC VERIFIED – SOLID
This cable is compliant to ANSI/TIA-568-C.2, ISO/IEC 11801 and EN 50173

CONSTRUCTION

Conductor	24 AWG solid bare copper
Insulation	Polyolefin
Pairs	4 Twisted pairs
Pair Colour Code	Blue/White-Blue, Orange/White-Orange, Green/White-Green, Brown/White-Brown
Sheath	PVC Also available on request: 1) Low Smoke Zero Halogen (LSZH) 2) UV resistant PVC



ELECTRICAL CHARACTERISTICS STANDARD FOR CATEGORY 5e

STANDARD CAT 5e

Frequency MHz	Attenuation dB/100 m	NEXT dB	PSNEXT dB	PSELFEXT dB
1	2.0	65.3	62.3	60.8
4	4.1	56.3	53.3	48.7
10	6.5	50.3	47.3	40.8
16	8.2	47.3	44.3	36.7
20	9.3	45.8	42.8	34.7
31.25	11.7	42.9	39.9	30.9
62.5	17.0	38.4	35.4	24.8
100	22.0	35.3	32.3	20.8

ELECTRICAL CHARACTERISTICS @ 20°C

DC Resistance:	93.8 Ohms/km (Max)
Resistance Unbalance:	2% (Max)
Mutual capacitance @ 1 kHz:	56 nF/km (Max)
Capacitance Unbalance:	1000 pF/km (Max)
Delay Skew:	450 nsec/km (Max)
Velocity of Propagation:	0.63 c
Characteristic Impedance:	100 Ohms ± 15% @ 1.0 Mhz – 100 Mhz

PHYSICAL PROPERTIES & PACKING

Fire safety Rating:	IEC 60332 Part 1
Outside Diameter (Nom):	5.1 mm
Weight (kg/km):	30
Temperature Range:	0° C to +50°C (Installation) -20°C to +70°C (Operational)
Standard Packaging:	305 m Easy Pull box (10 kg/box) (350mm x 210mm x 350mm) 500 m Plastic Reels (15 kg/Reel) (370mm x 185mm x 160mm)

YOUR LINK TO THE WORLD OF COMMUNICATION

PO Box 663, Brits, 0250, South Africa – Marthinus Ras Street, Industrial Sites, Brits
Tel: +27 (0) 12 381 1400 – Fax: +27 (0) 12 250 3412 – sales@cbitele.com - www.cbitele.com