

# Flutelab vertical flute headjoint user guide



Dear flutist,

Putting the Flutelab Vertical Flute Headjoint on your flute will convert it into a vertical flute.

In doing so, you will need to start working on your tone again as tone forming is different on a vertical flute. The top part of the headjoint can be turned to find the best spot.

There are a number of flute holding accesories included. It will take some exparimentation to find the combination that hits the right balance between solid support and flexibility. I advise to go for maximum solid support at first and once you are used to the vertical flute, adjust again.

If you have questions you are welcome to contact me at [flutelab@gmail.com](mailto:flutelab@gmail.com)

Best regards, Maarten Visser

[www.flutelab.com](http://www.flutelab.com)



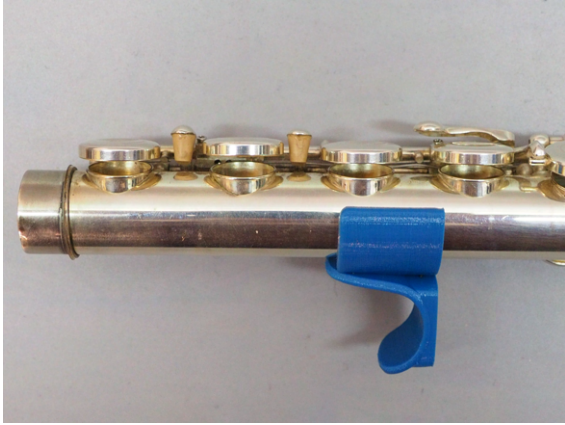
Place the Vertical headjoint into the tenon receiver of your flute. Flutelabs does all they can to make sure it will fit perfectly.

If it does not fit well: **Never use force !** The joints of the flute head can break easily. See a flute technician as this is a simple standard job.



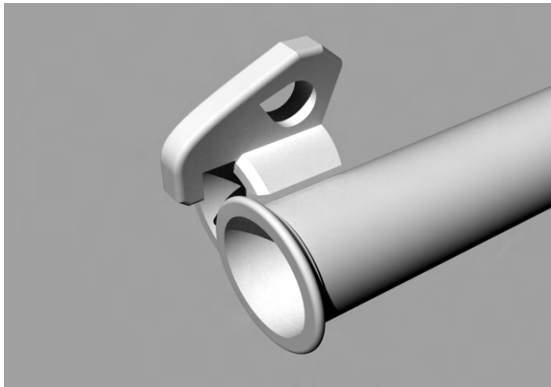
This is a starting position.:  
The large bend in the Vertical flute head lines up with the trill key axis.

It takes a while to find the ideal position of the vertical flute headjoint on your flute.

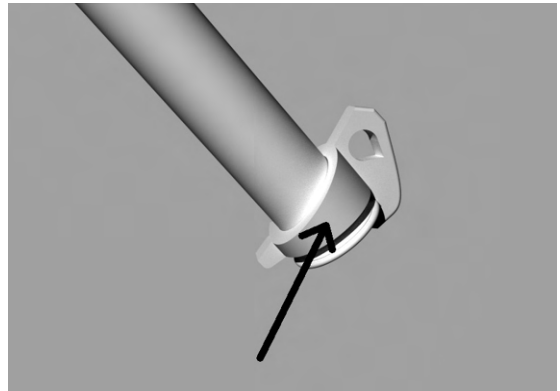


Clip on the thumb rest for the right thumb. It goes on the back of the flute opposite the F key. To prevent scratches make sure the flute is clean.

### vertical flute neck strap use



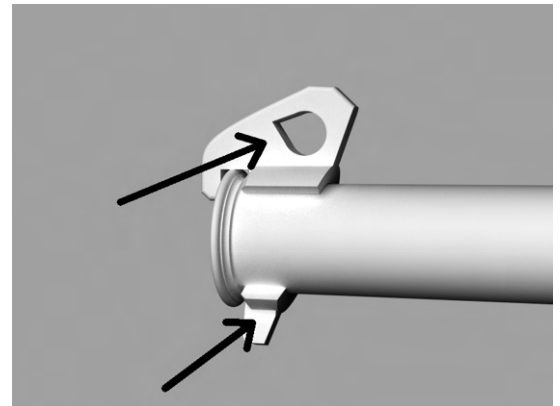
Place the clip on the end of the flute. The hook goes under the ring.



Push here to firmly attach the clip to the flute.



The neck strap attaches to the cord. The cord goes through the eye of the clip.



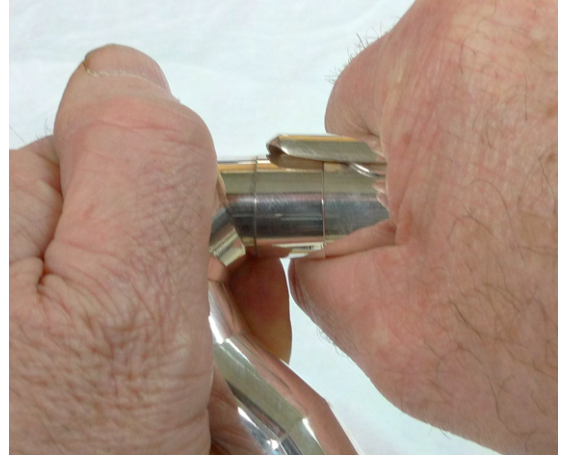
To remove, push the eye and the tab.



You are ready to play. Adjust the length of the strap for best comfort. A little adjustment can make a big difference.



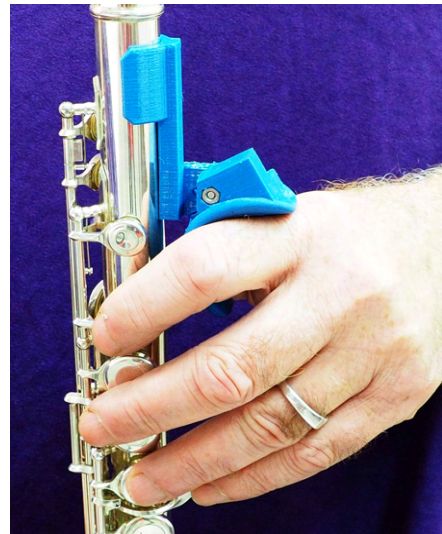
The best position for the embouchure hole is right on top of the Vertical flute headjoint.



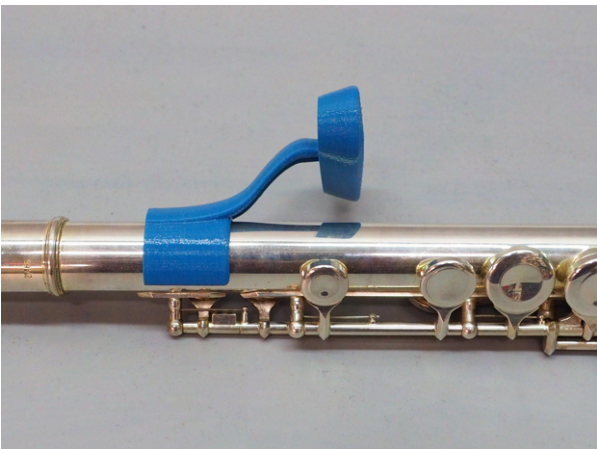
The position of the embouchure hole can be adjusted. Grip firmly and twist only a small amount. Then try.



There are two types of left hand support. Choose either one or the other. It takes some time to find the right spot. You can mark it on the flute with a felt tip pen (does not harm the flute).



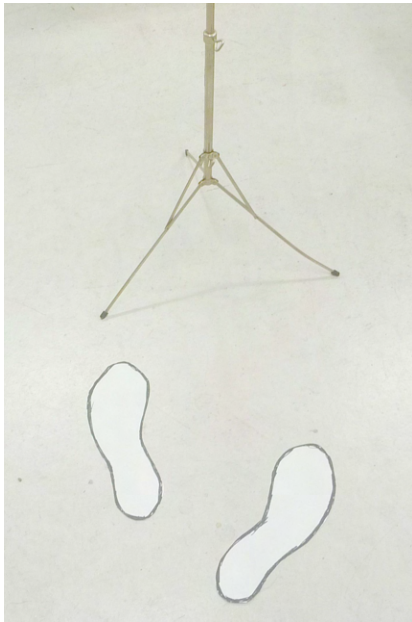
The support rests on the index finger, just before the knuckle. Once at the right height you can comfortably reach all keys. Adjust height by removing screw, choose other hole, and replace screw (do not overtighten or plastic will crack).



Simple type left hand support clips on the flute.



The left hand should be free to move but support should be there when you need it, for example with fingers off the keys at #c.

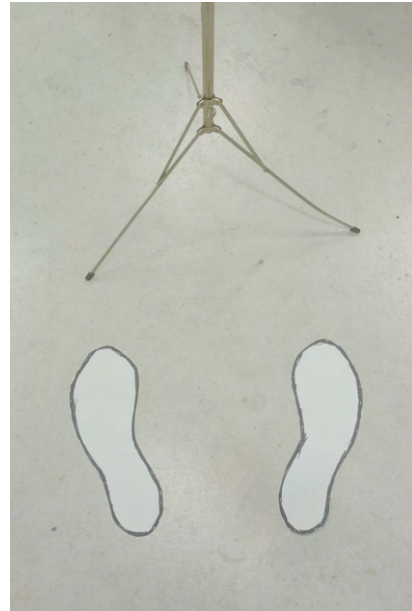


Position of feet with normal flute.

To clean the outside: use a microfibre cloth.

The cork must be replaced every 1-2 years. For this, the small end of the tube is pulled out. Cork size dia 17,3 mm length 20mm hole 4mm.

Any questions? Please email me.



Position of feet with Vertical flute.

To clean the inside use a "neck saver" for alto saxophone.

Materials used: silver 925/000, brass (stopper) 3D printed plastics (supports), malachite stone in crown.

flutelab@gmail.com