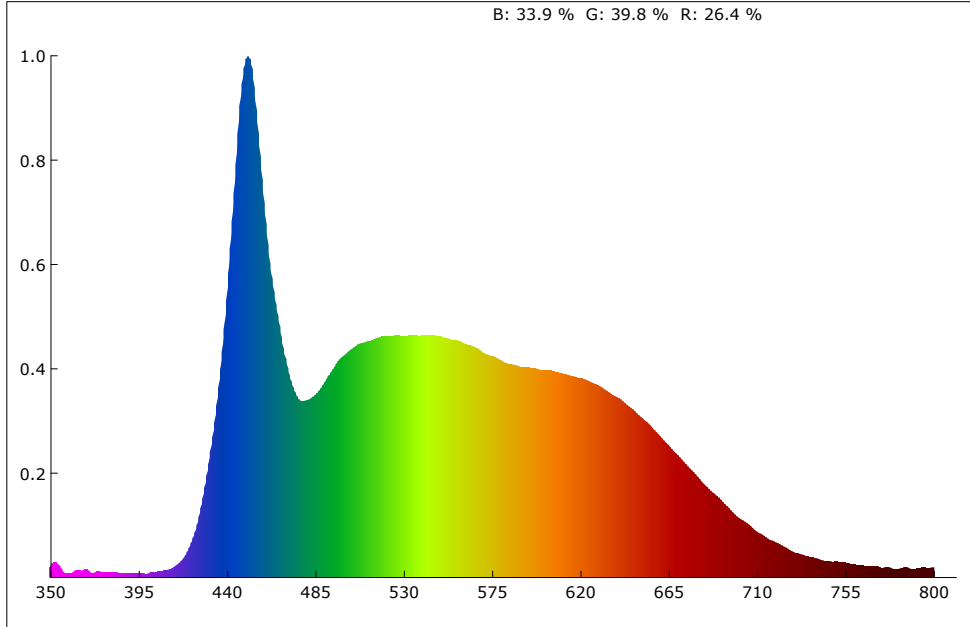
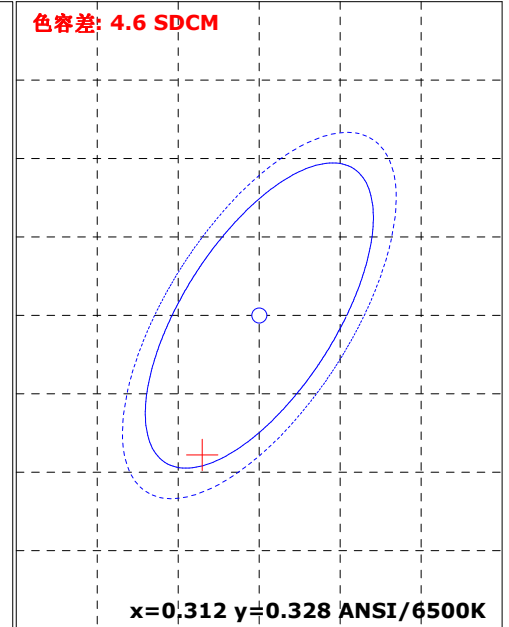


光谱图



SDCM



颜色参数:

坐标x: 0.3088 坐标y: 0.3193 坐标u: 0.1988 坐标v: 0.3083 坐标u': 0.1988 坐标v': 0.4624
 红色比: 26.4 % 绿色比: 39.8 % 蓝色比: 33.9 % 光通量红色比: 14.6 % 光通量绿色比: 80.7 % 光通量蓝色比: 4.7 %

显色指数: 95.4 AvgR: 93.3

R1: 96.2 R2: 96.5 R3: 94.0 R4: 96.7 R5: 95.8 R6: 92.5 R7: 97.3 R8: 94.9
 R9: 84.8 R10: 90.6 R11: 95.9 R12: 73.9 R13: 97.2 R14: 96.6 R15: 96.9

色温: 6817 K 光通量: 3315.453 lm 峰值波长: 450.6 nm 色容差: 4.6
 明暗视觉比: 2.4 中心波长: 452.5 nm 主波长: 484.0 nm 质心波长: 548.9 nm
 半宽度: 26.7 nm 色偏差: 0.00014 色纯度: 9.4 % 色质指数: 90.7
 LER(TM-30): 270.3 辐射功率: 12265.4 mw 色域指数(Rg): 100.3 逼真度(Rf): 90.9
 红光辐射功率: 3101.4 mw 近红辐射功率: 401.7 mw 远红辐射功率: 41.1 mw

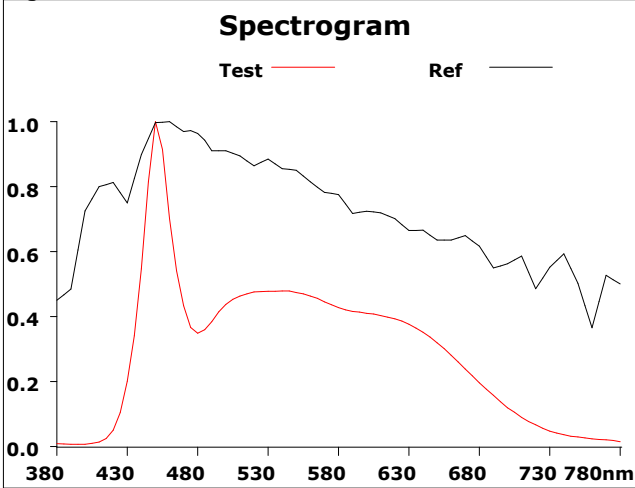
电参数:

光效: 10.8 Lm/W 能效: 11.7 能效等级: G
 电压: 222.1 V 电流: 1.425 A 功率: 307.600 W 功率因素: 0.971

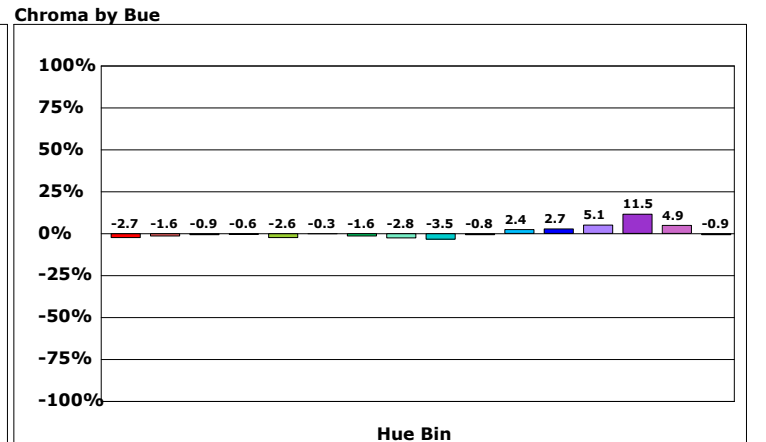
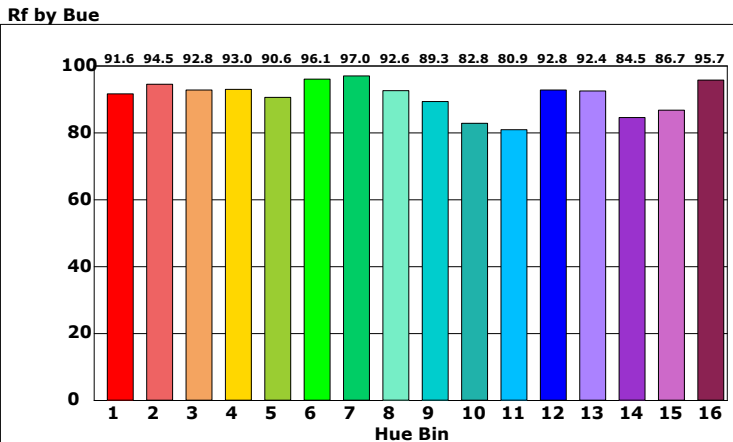
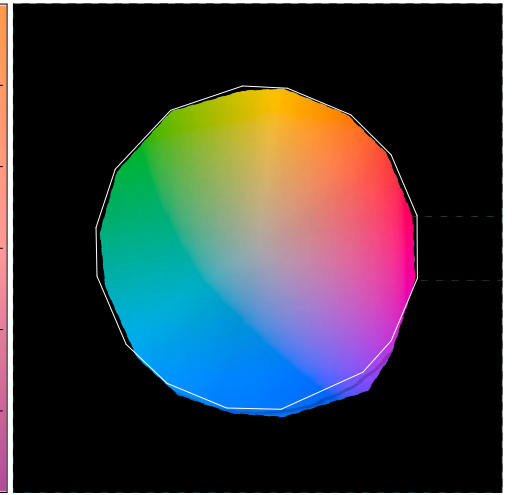
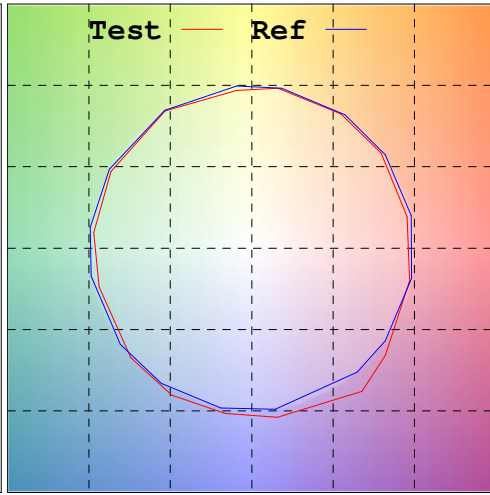
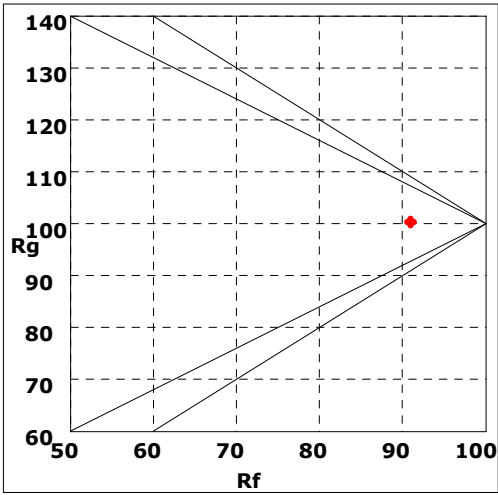
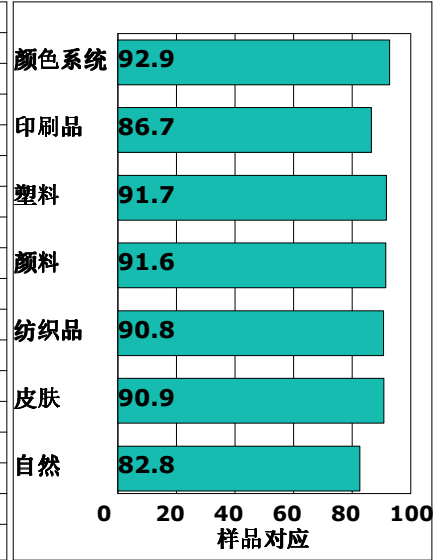
产品型号:
 产品编号:
 测试人员:
 备注:

制造厂商:
 测试单位:
 测试日期:09/11/23

Rf: 90.9 CCT: 6817K u': 0.1988
 Rg: 100.3 LER: 270.3 Duv: 0.00014 v': 0.4624

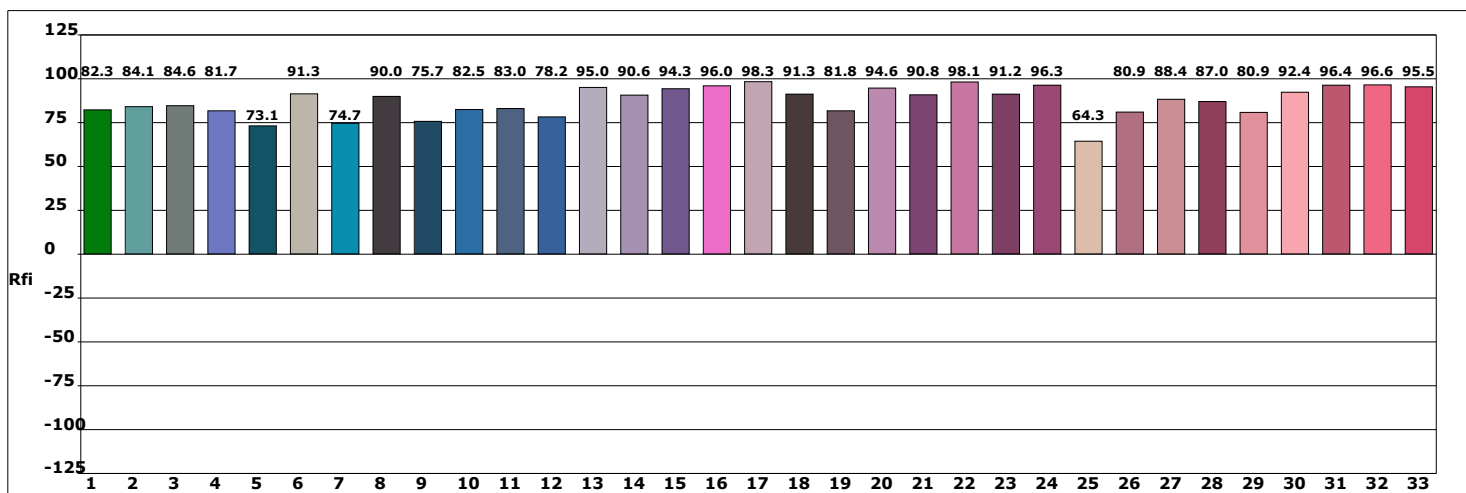
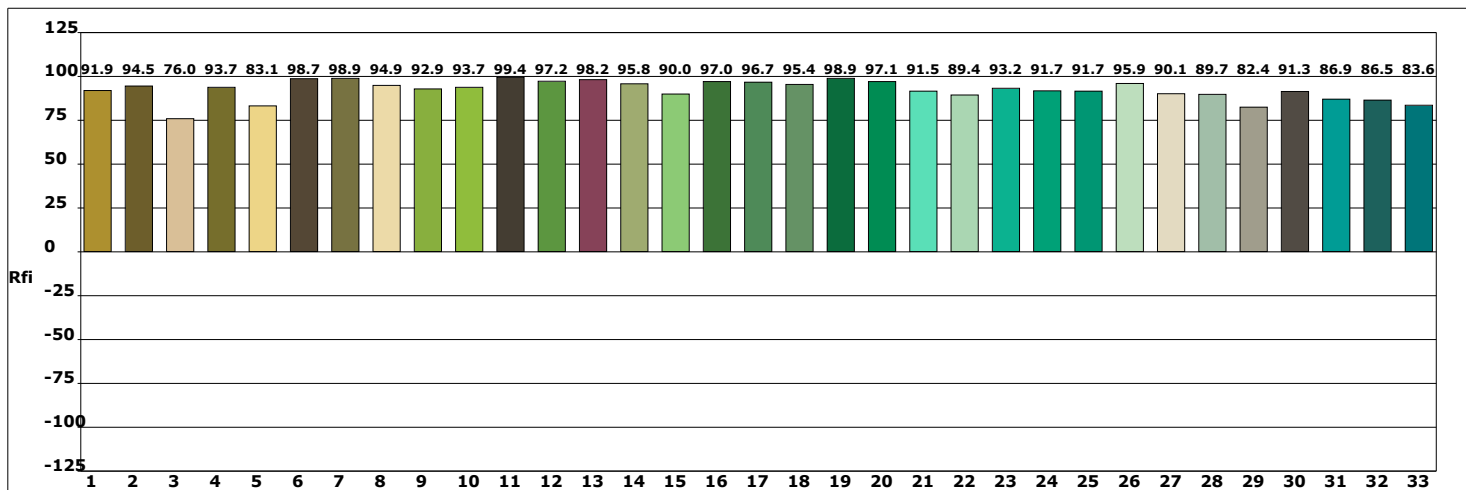
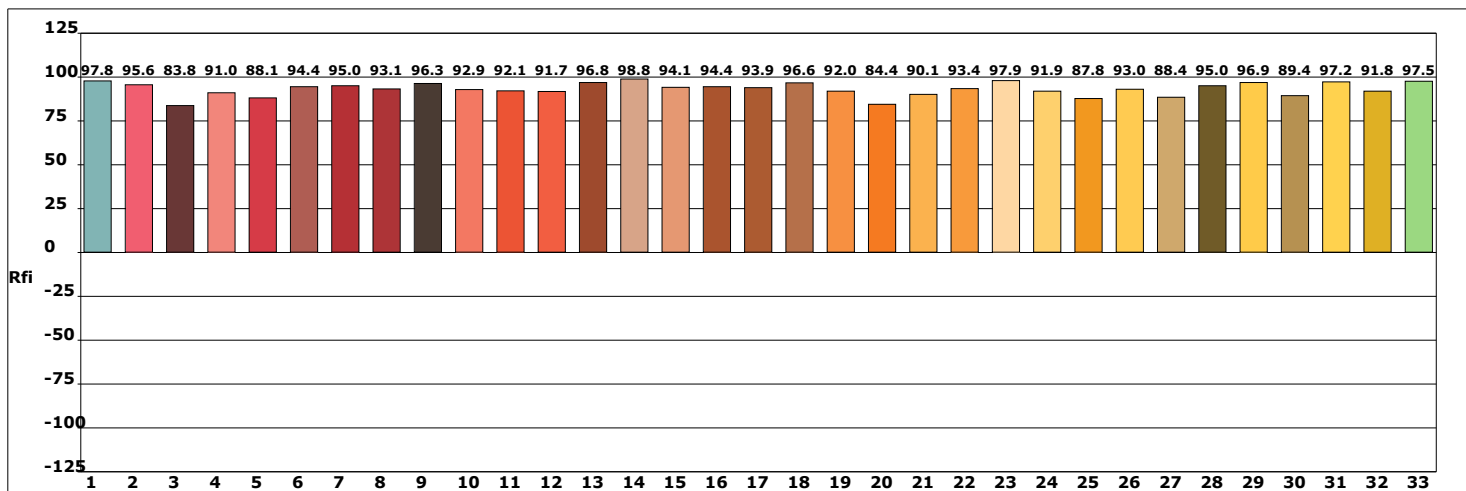


Hue Bin	Rf	Chroma	Hue
		500	
1	91.6	-2.7%	-0.0%
2	94.5	-1.6%	2.2%
3	92.8	-0.9%	2.4%
4	93.0	-0.6%	2.3%
5	90.6	-2.6%	0.6%
6	96.1	-0.3%	0.1%
7	97.0	-1.6%	0.7%
8	92.6	-2.8%	2.6%
9	89.3	-3.5%	7.6%
10	82.8	-0.8%	10.4%
11	80.9	2.4%	9.5%
12	92.8	2.7%	3.3%
13	92.4	5.1%	0.4%
14	84.5	11.5%	-4.0%
15	86.7	4.9%	-7.4%
16	95.7	-0.9%	-1.5%



产品型号:
 产品编号:
 测试人员:
 备注:

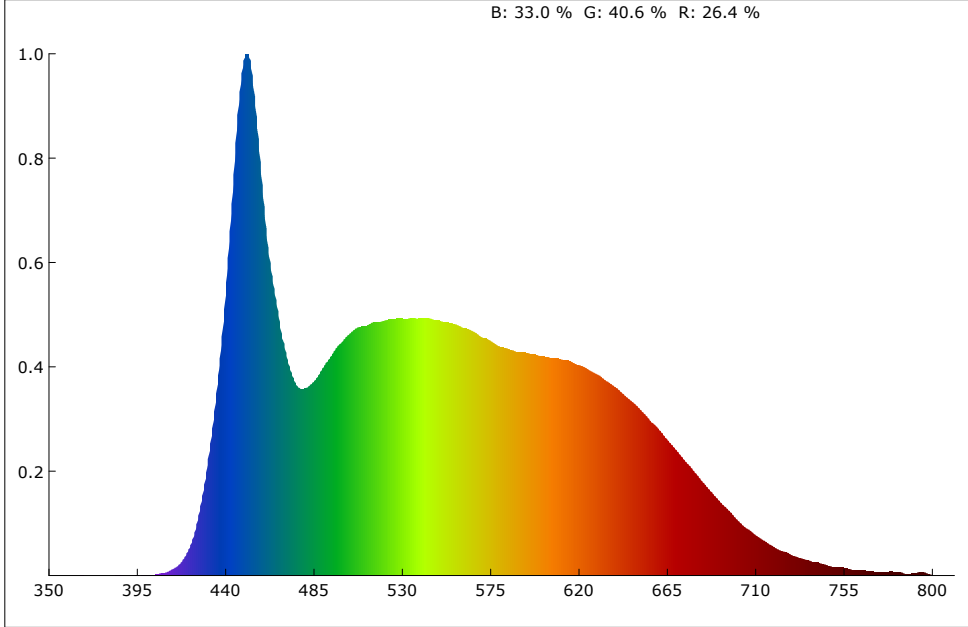
制造厂商:
 测试单位:
 测试日期:09/11/23



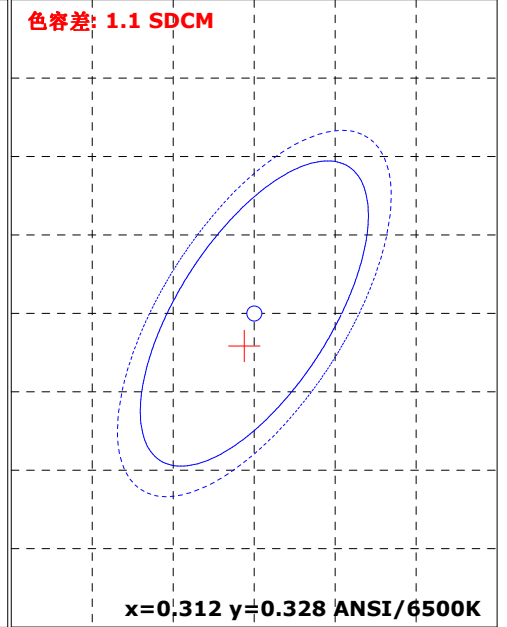
产品型号:
产品编号:
测试人员:
备注:

制造厂商:
测试单位:
测试日期:09/11/23

光谱图



SDCM



颜色参数:

坐标x: 0.3117 坐标y: 0.3261 坐标u: 0.1982 坐标v: 0.3111 坐标u': 0.1982 坐标v': 0.4667
 红色比: 26.4 % 绿色比: 40.6 % 蓝色比: 33.0 % 光通量红色比: 14.6 % 光通量绿色比: 80.8 % 光通量蓝色比: 4.6 %

显色指数: 94.8 AvgR: 92.2
 R1: 95.3 R2: 96.7 R3: 95.4 R4: 95.0 R5: 94.1 R6: 92.4 R7: 96.9 R8: 92.6
 R9: 77.9 R10: 90.7 R11: 95.0 R12: 72.7 R13: 96.5 R14: 97.6 R15: 94.7

色温: 6584 K 光通量: 7113.033 lm 峰值波长: 451.6 nm 色容差: 1.1
 明暗视觉比: 2.4 中心波长: 453.7 nm 主波长: 487.3 nm 质心波长: 548.6 nm
 半宽度: 27.6 nm 色偏差: 0.00223 色纯度: 7.8 % 色质指数: 91.7
 LER(TM-30): 280.2 辐射功率: 25388.6 mw 色域指数(Rg): 98.7 逼真度(Rf): 90.6
 红光辐射功率: 6540.5 mw 近红辐射功率: 614.0 mw 远红辐射功率: 24.8 mw

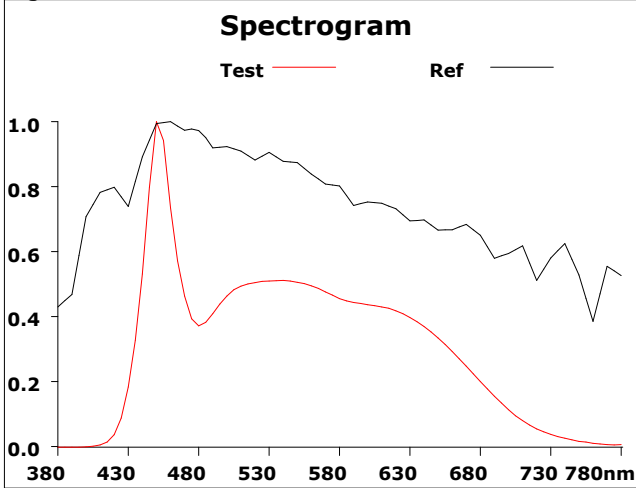
电参数:

光效: 23.2 Lm/W 能效: 25.2 能效等级: G
 电压: 222.2 V 电流: 1.423 A 功率: 307.200 W 功率因素: 0.971

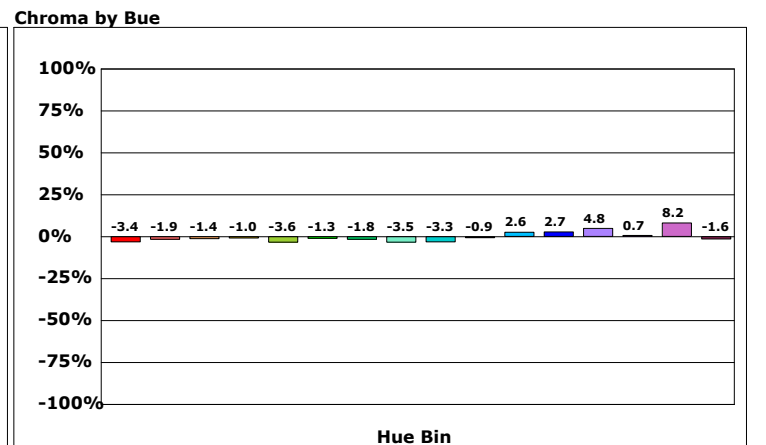
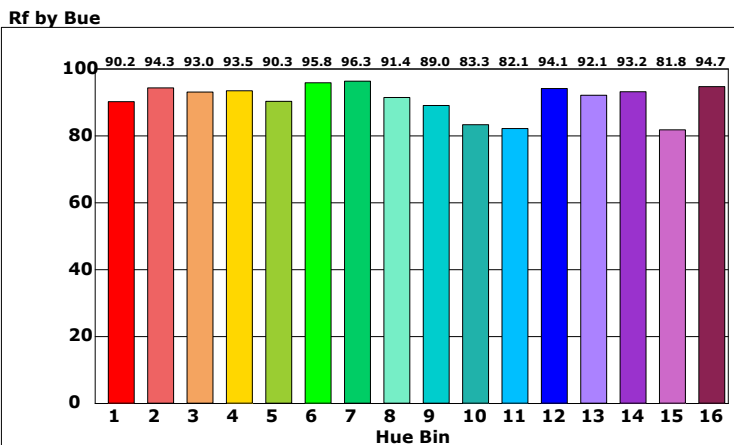
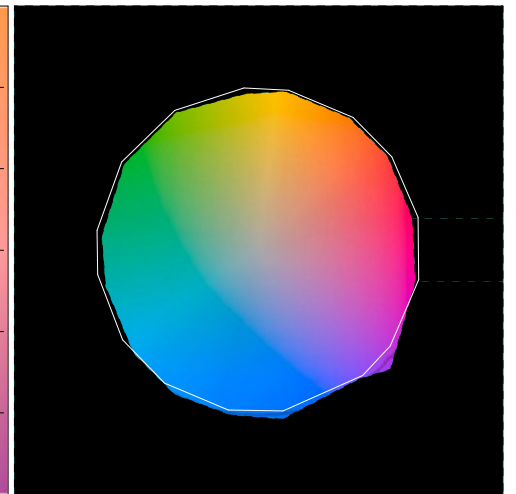
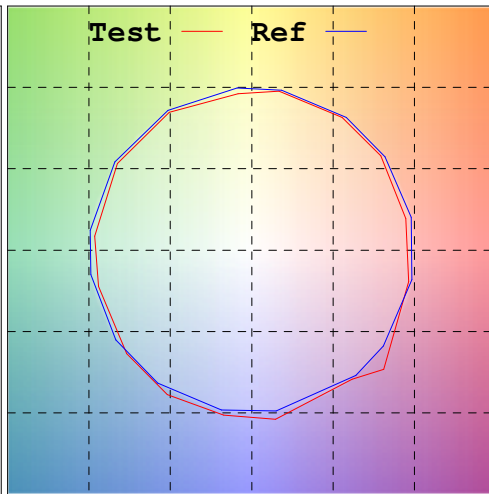
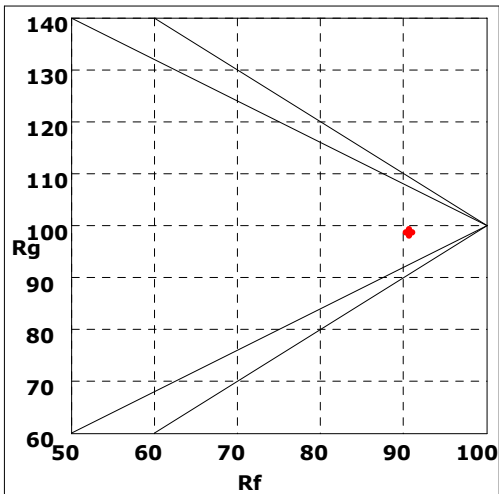
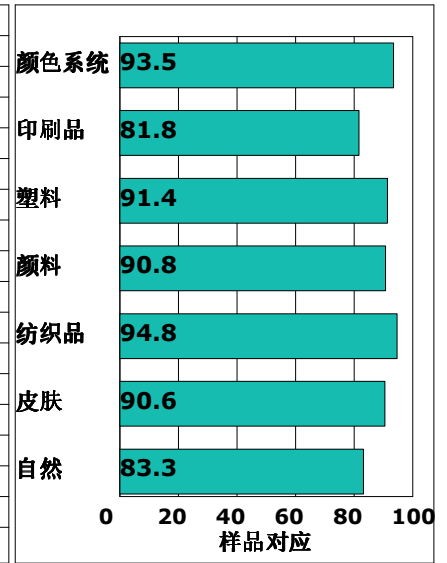
产品型号:
 产品编号:
 测试人员:
 备注:

制造厂商:
 测试单位:
 测试日期:09/11/23

Rf: 90.6 CCT: 6584K u': 0.1982
 Rg: 98.7 LER: 280.2 Duv: 0.00223 v': 0.4667

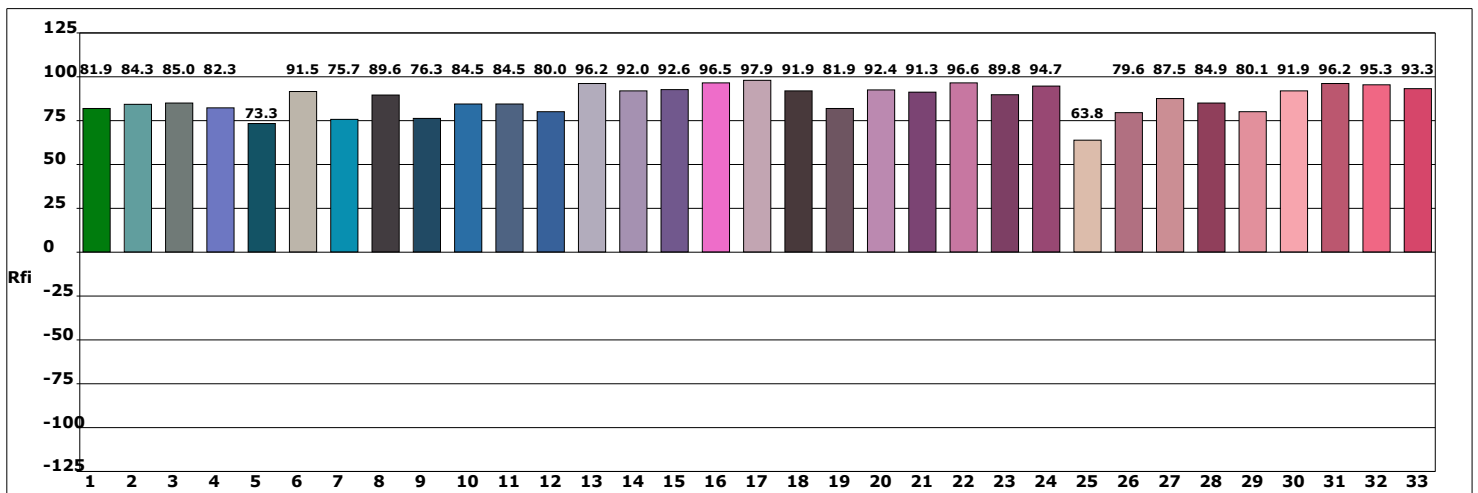
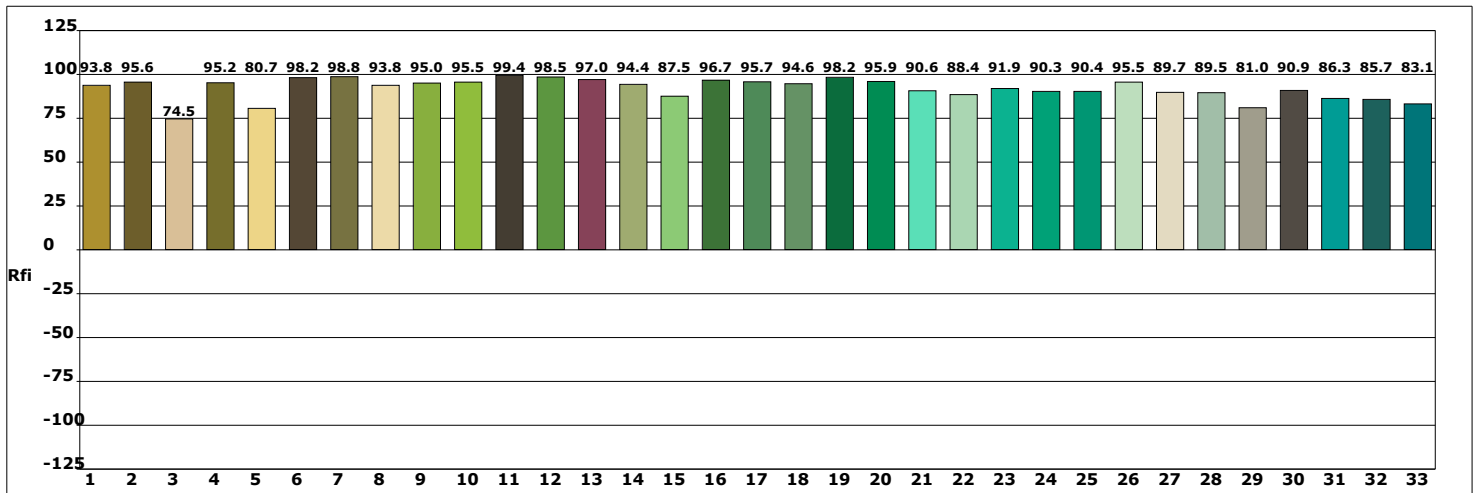
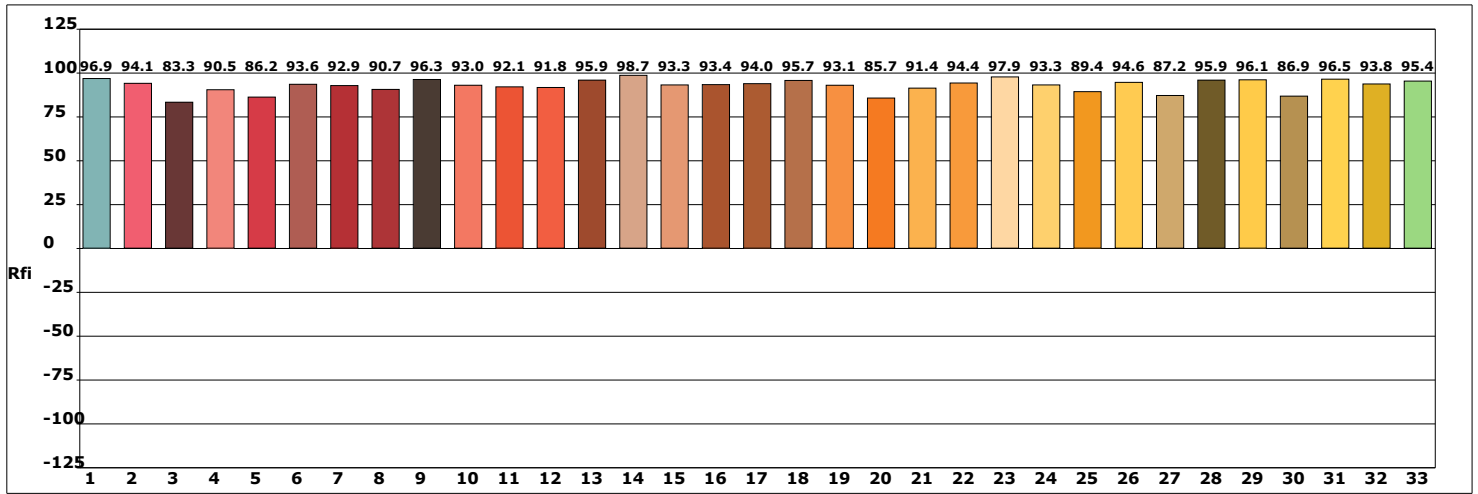


Hue Bin	Rf	Chroma	Hue
		500	
1	90.2	-3.4%	-0.1%
2	94.3	-1.9%	2.1%
3	93.0	-1.4%	2.1%
4	93.5	-1.0%	1.6%
5	90.3	-3.6%	0.1%
6	95.8	-1.3%	-0.1%
7	96.3	-1.8%	0.0%
8	91.4	-3.5%	2.9%
9	89.0	-3.3%	8.2%
10	83.3	-0.9%	10.6%
11	82.1	2.6%	8.8%
12	94.1	2.7%	2.1%
13	92.1	4.8%	-1.3%
14	93.2	0.7%	-3.3%
15	81.8	8.2%	-11.9%
16	94.7	-1.6%	-1.7%



产品型号:
 产品编号:
 测试人员:
 备注:

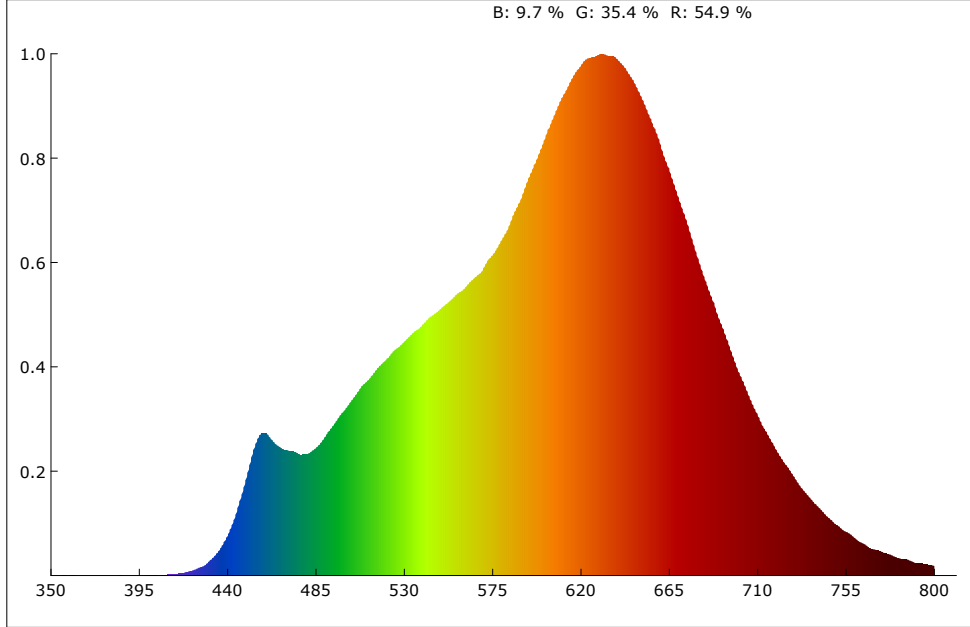
制造厂商:
 测试单位:
 测试日期:09/11/23



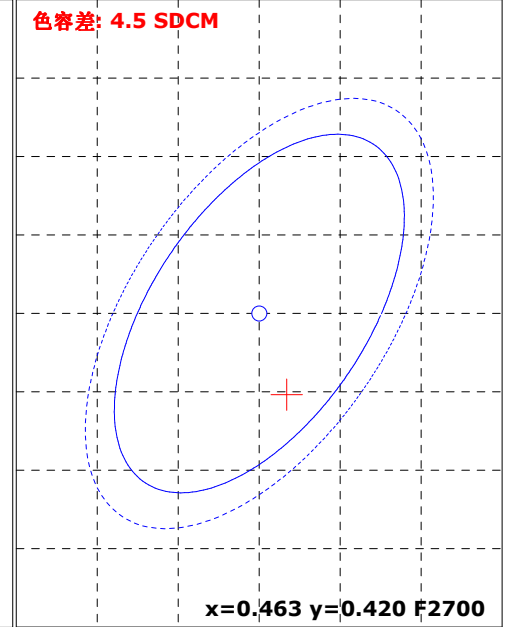
产品型号:
产品编号:
测试人员:
备注:

制造厂商:
测试单位:
测试日期:09/11/23

光谱图



SDCM



颜色参数:

坐标x: 0.4667 坐标y: 0.4148 坐标u: 0.2650 坐标v: 0.3533 坐标u': 0.2650 坐标v': 0.5300
 红色比: 54.9% 绿色比: 35.4% 蓝色比: 9.7% 光通量红色比: 27.0% 光通量绿色比: 71.3% 光通量蓝色比: 1.7%

显色指数: 96.2 AvgR: 95.2
 R1: 98.9 R2: 98.3 R3: 98.6 R4: 97.2 R5: 97.9 R6: 94.4 R7: 93.9 R8: 91.1
 R9: 82.5 R10: 97.3 R11: 96.0 R12: 88.1 R13: 98.5 R14: 98.9 R15: 96.1

色温: 2639 K 光通量: 4851.482 lm 峰值波长: 630.5 nm 色容差: 4.5
 明暗视觉比: 1.3 中心波长: 617.6 nm 主波长: 584.2 nm 质心波长: 607.4 nm
 半宽度: 142.5 nm 色偏差: 0.00099 色纯度: 64.6% 色质指数: 86.2
 LER(TM-30): 263.7 辐射功率: 18396.9 mw 色域指数(Rg): 96.5 逼真度(Rf): 90.4
 红光辐射功率: 9266.4 mw 近红辐射功率: 1459.8 mw 远红辐射功率: 64.9 mw

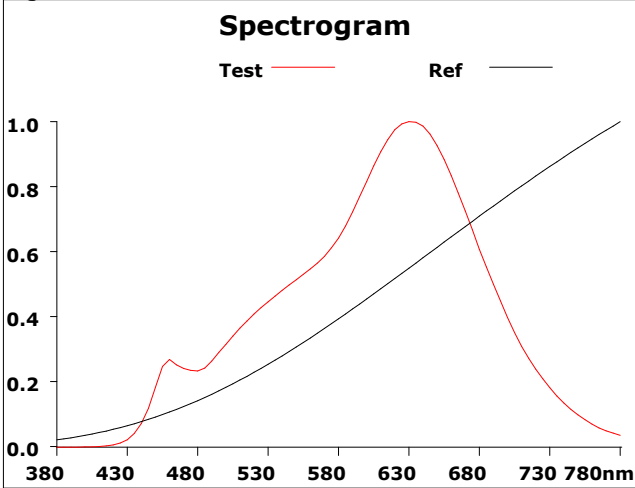
电参数:

光效: 16.1 Lm/W 能效: 17.5 能效等级: G
 电压: 222.3 V 电流: 1.398 A 功率: 301.500 W 功率因素: 0.969

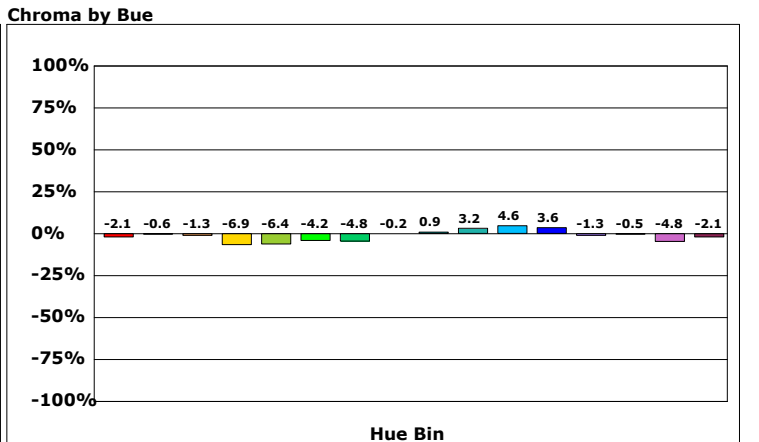
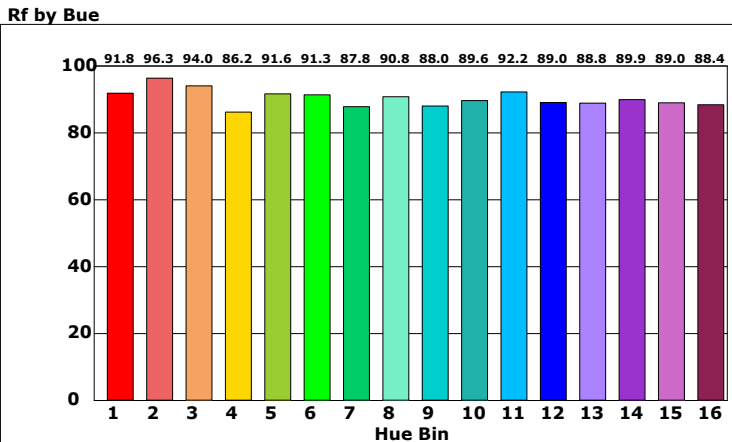
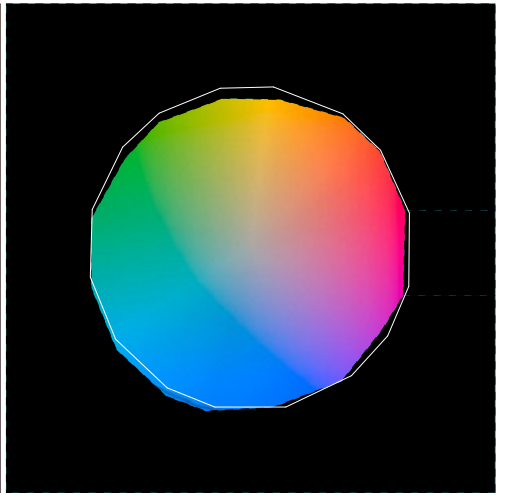
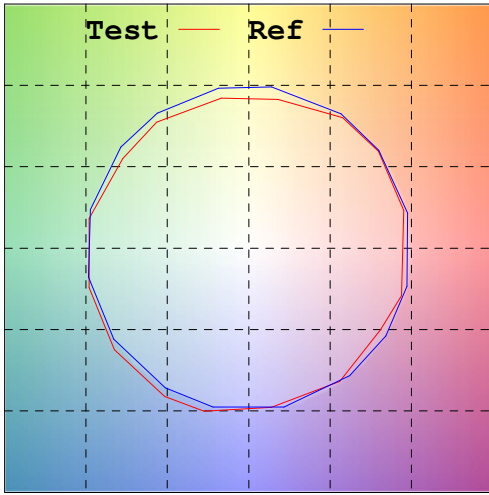
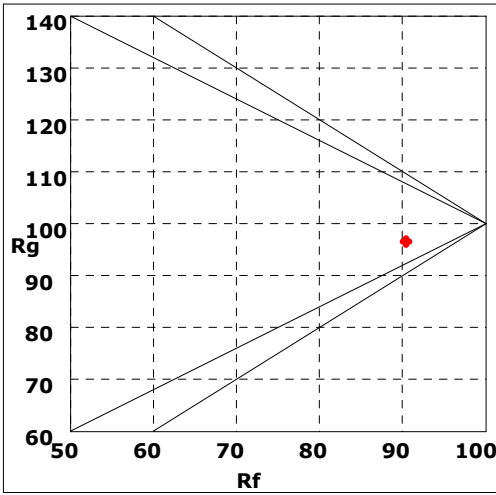
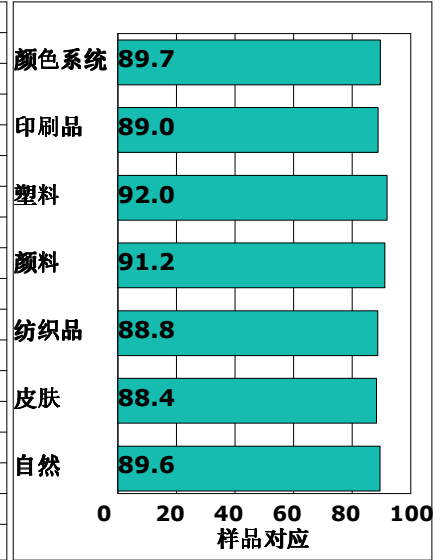
产品型号:
 产品编号:
 测试人员:
 备注:

制造厂商:
 测试单位:
 测试日期:09/11/23

Rf: 90.4 CCT: 2639K u': 0.2650
 Rg: 96.5 LER: 263.7 Duv: 0.00099 v': 0.5300

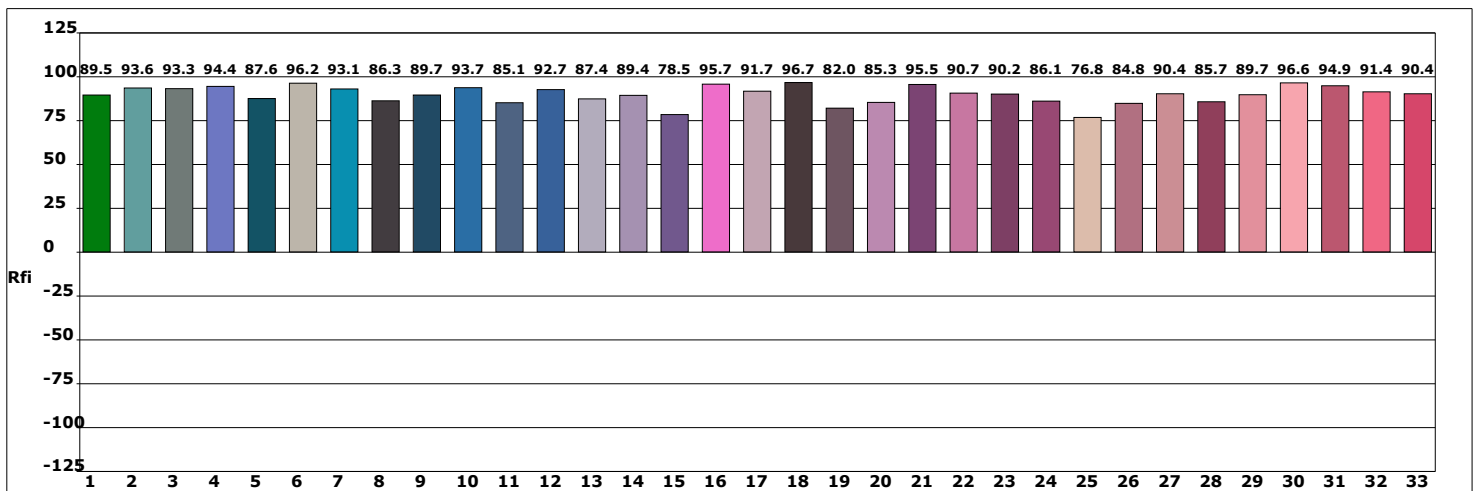
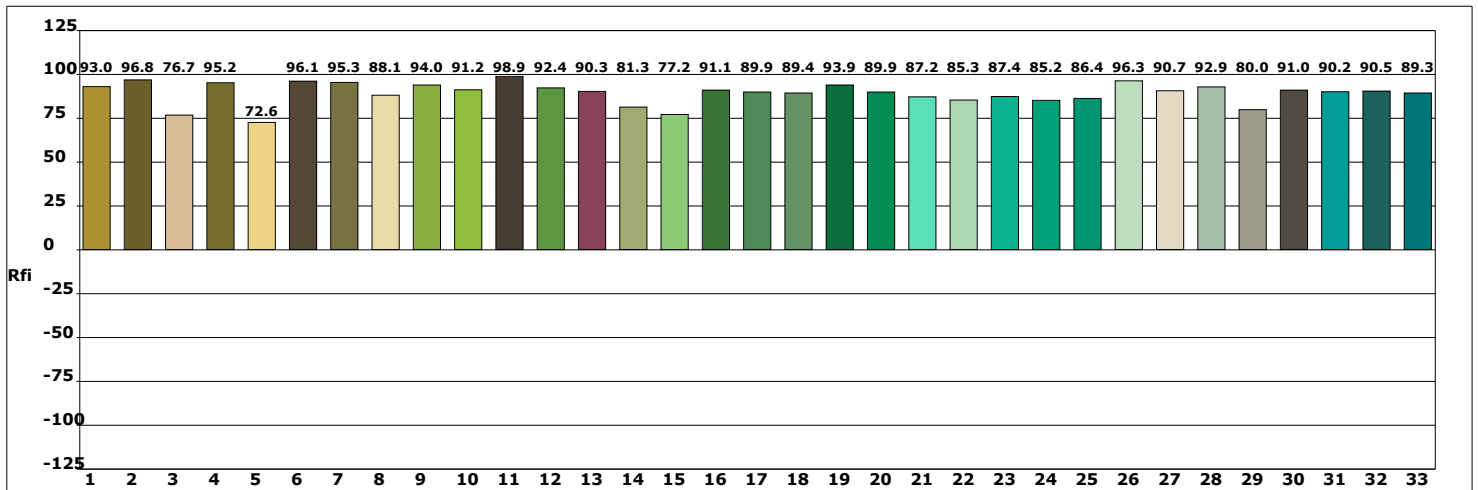
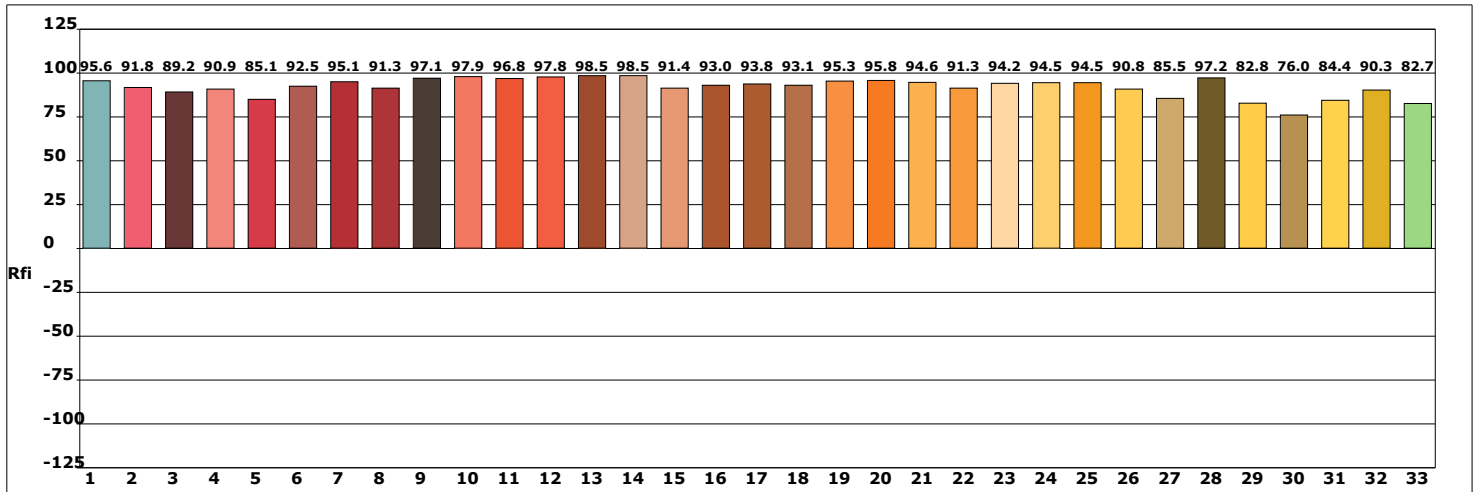


Hue Bin	Rf	Chroma	Hue
1	91.8	-2.1%	2.0%
2	96.3	-0.6%	-0.5%
3	94.0	-1.3%	-2.2%
4	86.2	-6.9%	-5.4%
5	91.6	-6.4%	-0.7%
6	91.3	-4.2%	3.4%
7	87.8	-4.8%	5.2%
8	90.8	-0.2%	5.6%
9	88.0	0.9%	6.4%
10	89.6	3.2%	5.6%
11	92.2	4.6%	2.5%
12	89.0	3.6%	-5.1%
13	88.8	-1.3%	-7.8%
14	89.9	-0.5%	-6.9%
15	89.0	-4.8%	1.3%
16	88.4	-2.1%	-6.4%



产品型号:
 产品编号:
 测试人员:
 备注:

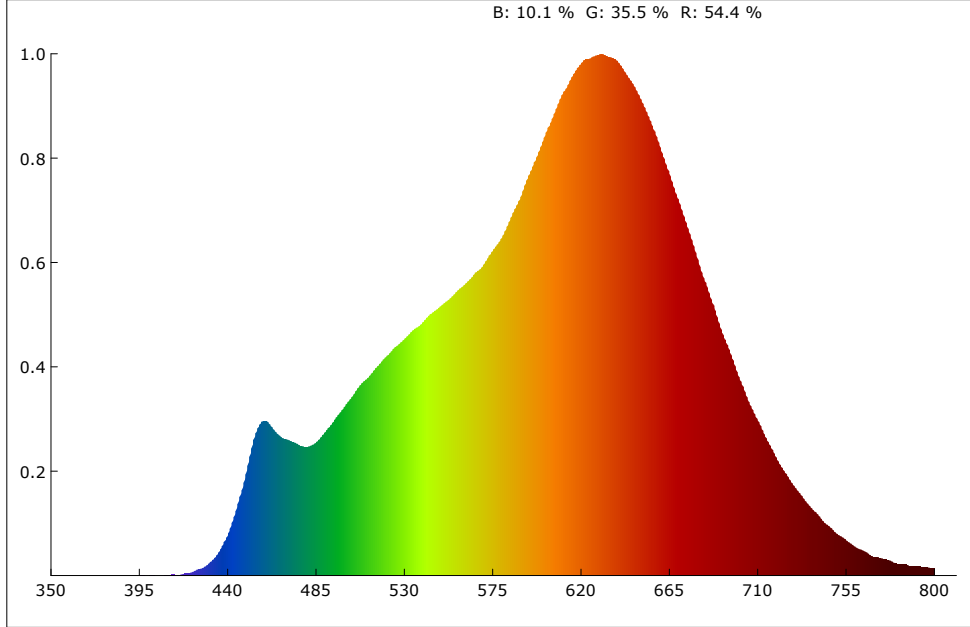
制造厂商:
 测试单位:
 测试日期:09/11/23



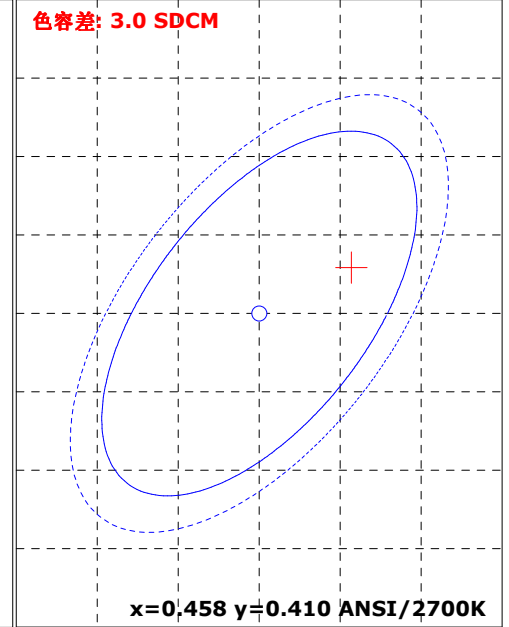
产品型号:
产品编号:
测试人员:
备注:

制造厂商:
测试单位:
测试日期:09/11/23

光谱图



SDCM



颜色参数:

坐标x: 0.4635 坐标y: 0.4130 坐标u: 0.2638 坐标v: 0.3525 坐标u': 0.2638 坐标v': 0.5288
 红色比: 54.4 % 绿色比: 35.5 % 蓝色比: 10.1 % 光通量红色比: 26.8 % 光通量绿色比: 71.4 % 光通量蓝色比: 1.8 %

显色指数: 95.9 AvgR: 94.9

R1: 98.8 R2: 98.0 R3: 98.2 R4: 97.2 R5: 97.7 R6: 93.8 R7: 93.3 R8: 90.8
 R9: 82.5 R10: 96.6 R11: 96.3 R12: 86.9 R13: 98.4 R14: 99.1 R15: 96.1

色温: 2667 K 光通量: 2245.167 lm 峰值波长: 630.5 nm 色容差: 3.0
 明暗视觉比: 1.3 中心波长: 616.8 nm 主波长: 584.2 nm 质心波长: 605.3 nm
 半宽度: 143.6 nm 色偏差: 0.00054 色纯度: 63.1 % 色质指数: 86.3
 LER(TM-30): 266.4 辐射功率: 8427.8 mw 色域指数(Rg): 96.6 逼真度(Rf): 90.0
 红光辐射功率: 4237.7 mw 近红辐射功率: 611.8 mw 远红辐射功率: 20.9 mw

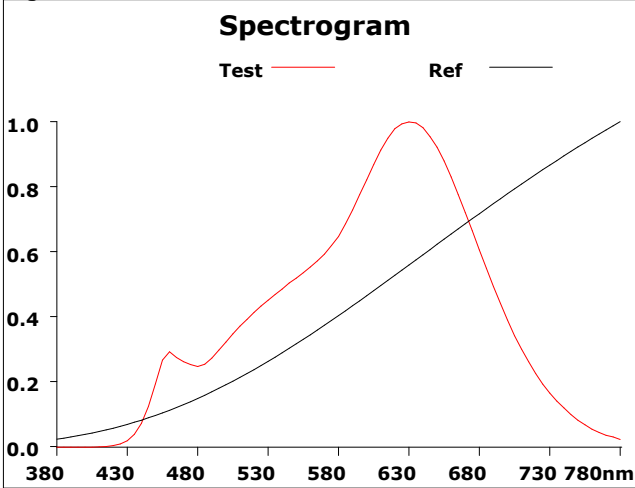
电参数:

光效: 7.4 Lm/W 能效: 8.1 能效等级: G
 电压: 222.9 V 电流: 1.397 A 功率: 301.800 W 功率因素: 0.968

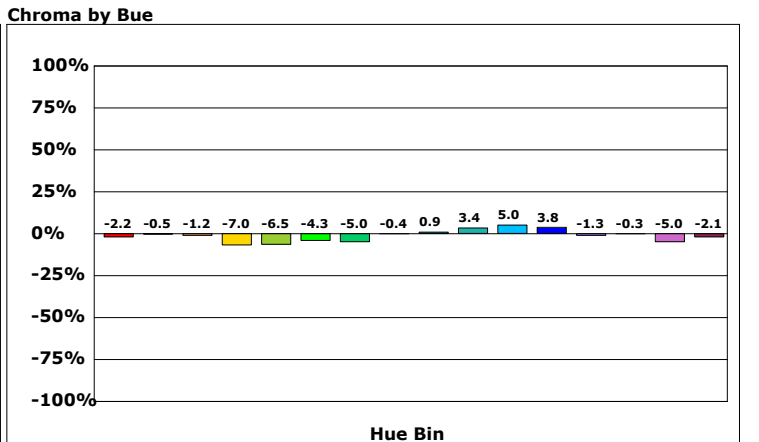
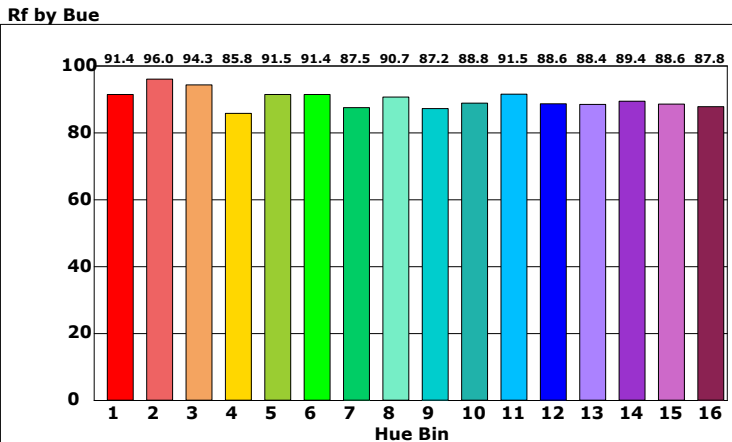
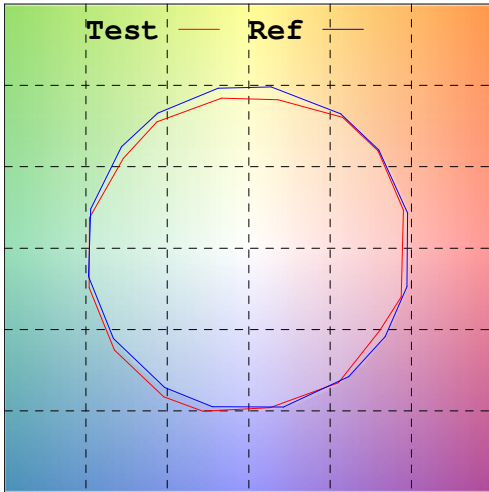
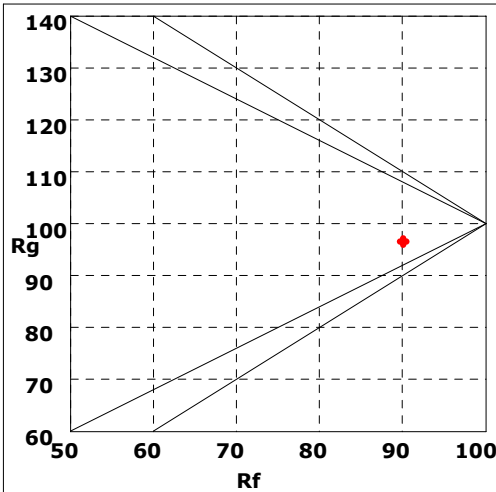
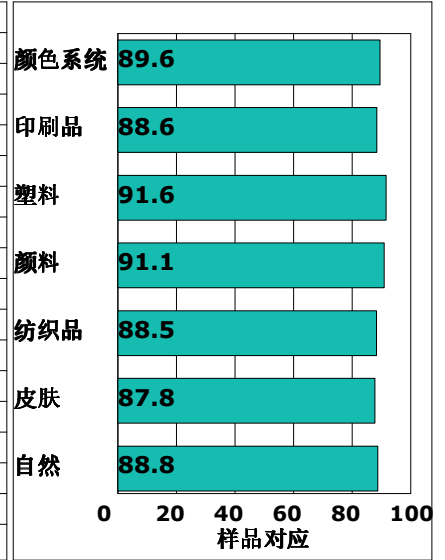
产品型号:
 产品编号:
 测试人员:
 备注:

制造厂商:
 测试单位:
 测试日期:09/11/23

Rf: 90.0 CCT: 2667K u': 0.2638
 Rg: 96.6 LER: 266.4 Duv: 0.00054 v': 0.5288

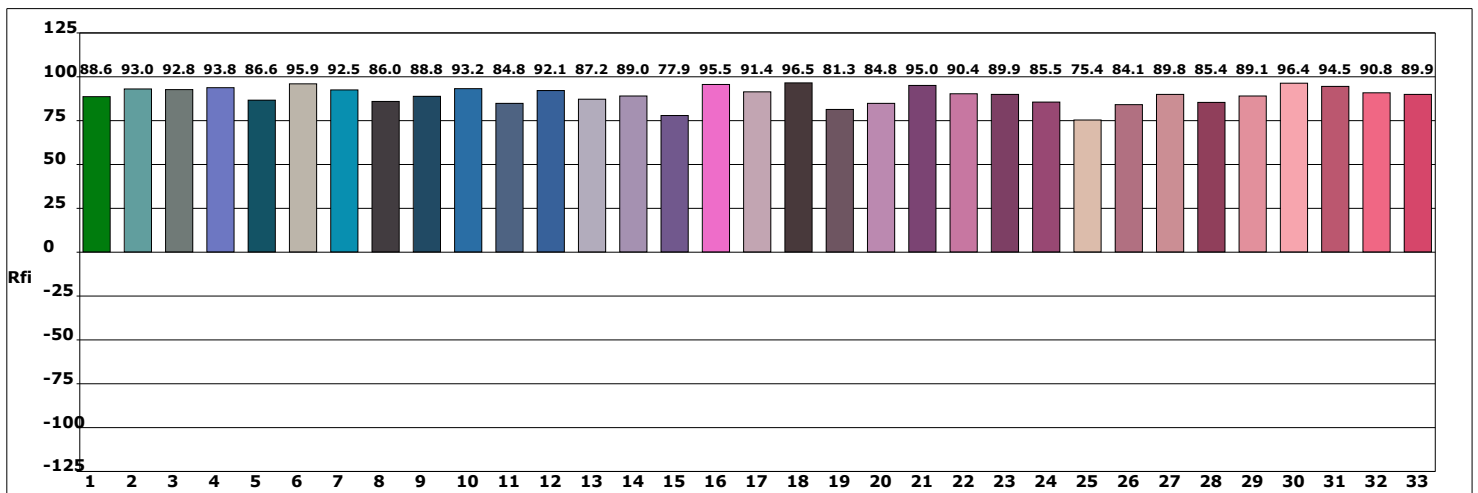
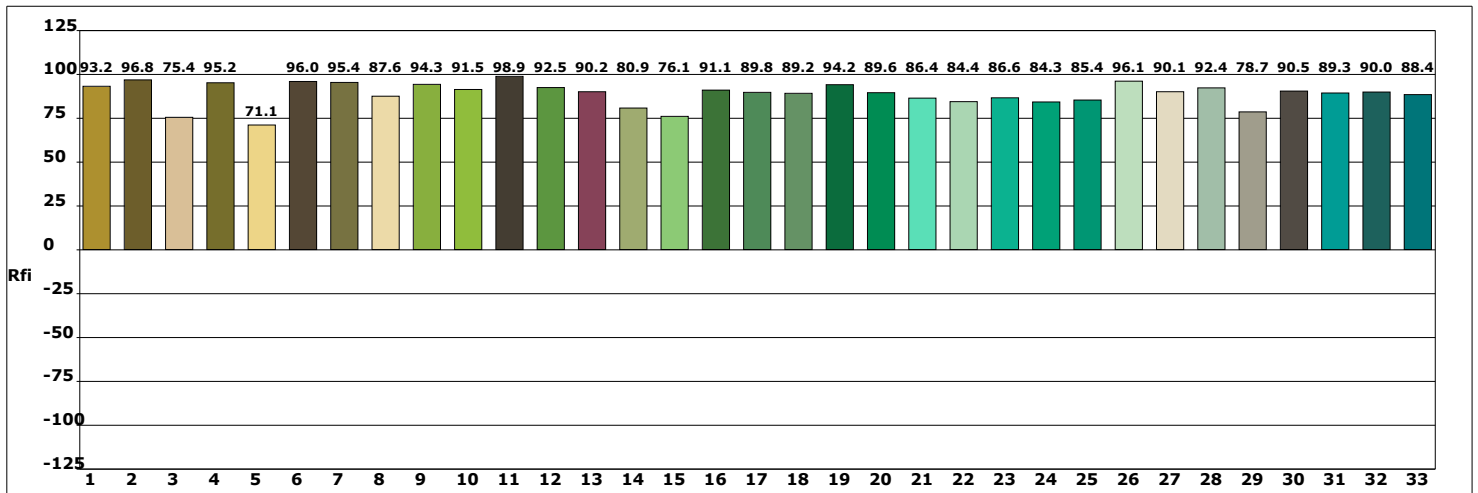
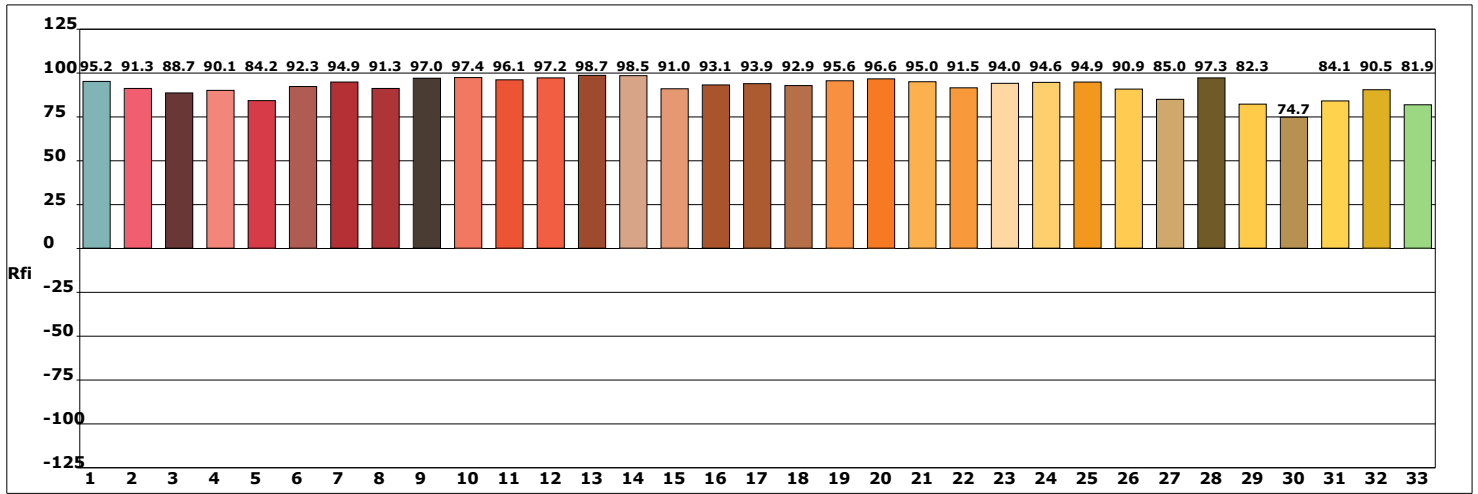


Hue Bin	Rf	Chroma	Hue
1	91.4	-2.2%	2.2%
2	96.0	-0.5%	-0.3%
3	94.3	-1.2%	-2.0%
4	85.8	-7.0%	-5.6%
5	91.5	-6.5%	-0.9%
6	91.4	-4.3%	3.2%
7	87.5	-5.0%	5.2%
8	90.7	-0.4%	5.6%
9	87.2	0.9%	6.9%
10	88.8	3.4%	6.1%
11	91.5	5.0%	2.8%
12	88.6	3.8%	-5.1%
13	88.4	-1.3%	-8.1%
14	89.4	-0.3%	-7.3%
15	88.6	-5.0%	1.3%
16	87.8	-2.1%	-6.8%



产品型号:
 产品编号:
 测试人员:
 备注:

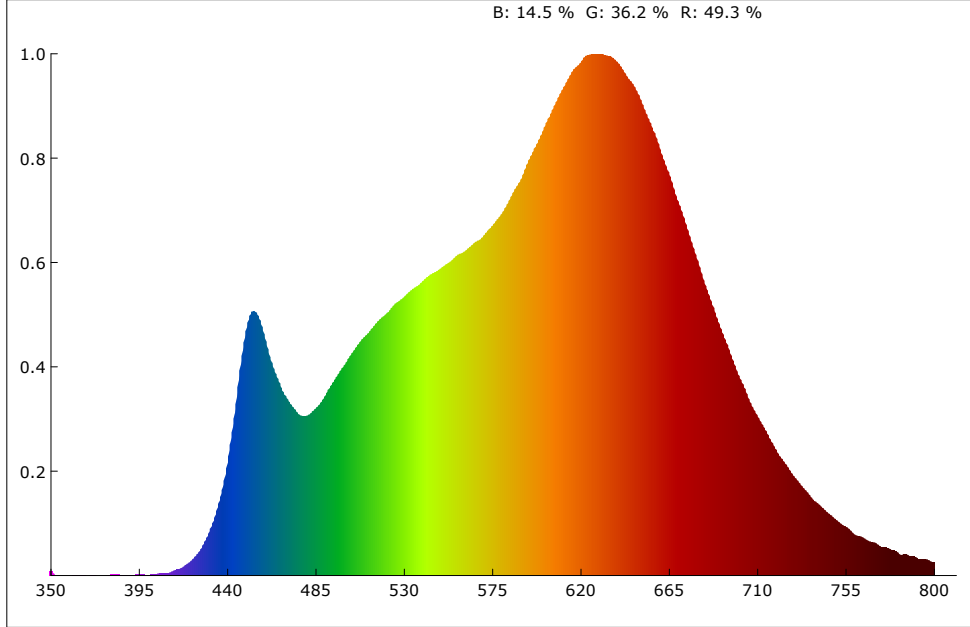
制造厂商:
 测试单位:
 测试日期:09/11/23



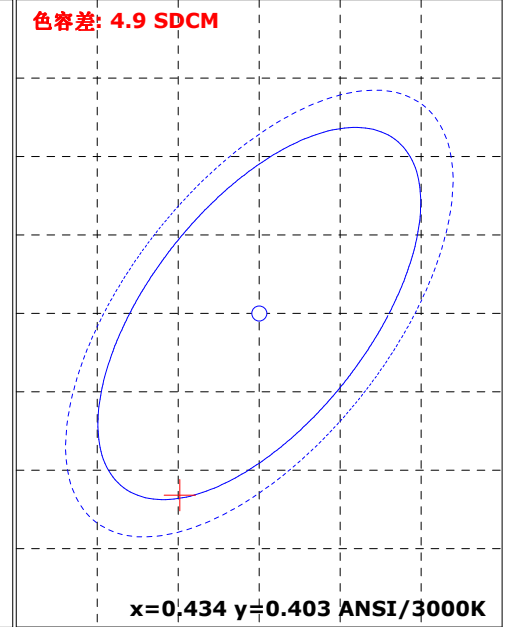
产品型号:
产品编号:
测试人员:
备注:

制造厂商:
测试单位:
测试日期:09/11/23

光谱图



SDCM



颜色参数:

坐标x: 0.4289 坐标y: 0.3914 坐标u: 0.2509 坐标v: 0.3434 坐标u': 0.2509 坐标v': 0.5151
 红色比: 49.3 % 绿色比: 36.2 % 蓝色比: 14.5 % 光通量红色比: 24.6 % 光通量绿色比: 73.1 % 光通量蓝色比: 2.3 %

显色指数: 96.1 AvgR: 95.4

R1: 96.9 R2: 96.7 R3: 98.5 R4: 97.7 R5: 96.1 R6: 92.6 R7: 95.1 R8: 95.4
 R9: 93.0 R10: 94.4 R11: 94.4 R12: 86.3 R13: 96.3 R14: 99.0 R15: 98.7

色温: 3032 K 光通量: 2476.573 lm 峰值波长: 626.6 nm 色容差: 4.9
 明暗视觉比: 1.5 中心波长: 604.9 nm 主波长: 584.3 nm 质心波长: 597.1 nm
 半宽度: 166.6 nm 色偏差: -0.00403 色纯度: 46.2 % 色质指数: 90.6
 LER(TM-30): 263.5 辐射功率: 9398.1 mw 色域指数(Rg): 101.2 逼真度(Rf): 94.0
 红光辐射功率: 4272.6 mw 近红辐射功率: 695.5 mw 远红辐射功率: 40.1 mw

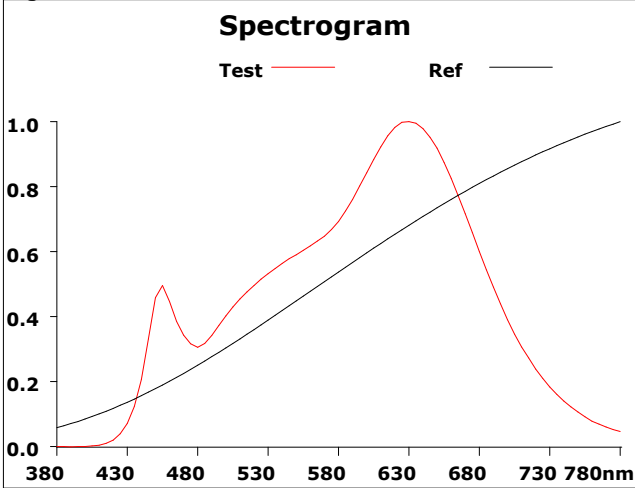
电参数:

光效: 8.5 Lm/W 能效: 9.3 能效等级: G
 电压: 222.4 V 电流: 1.344 A 功率: 289.800 W 功率因素: 0.969

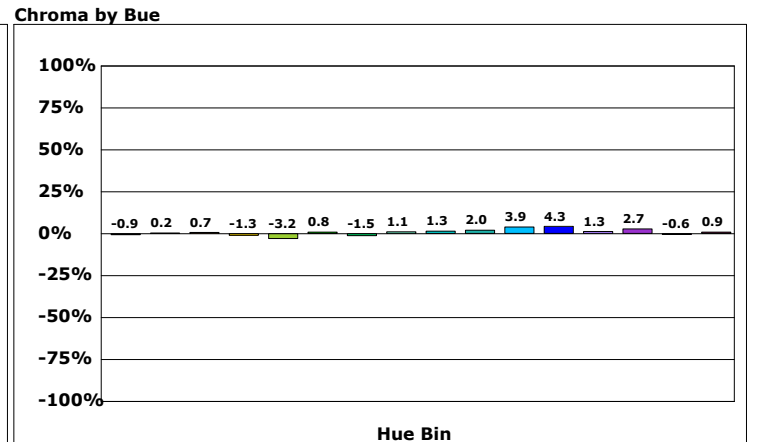
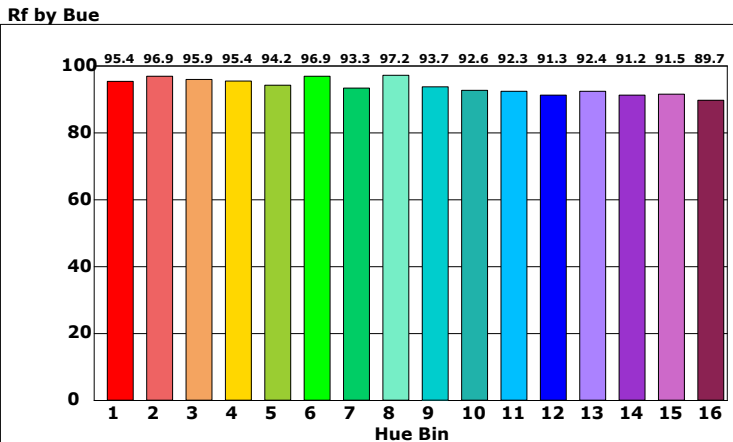
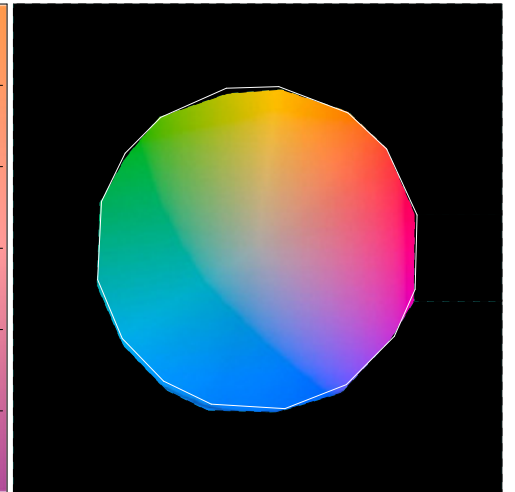
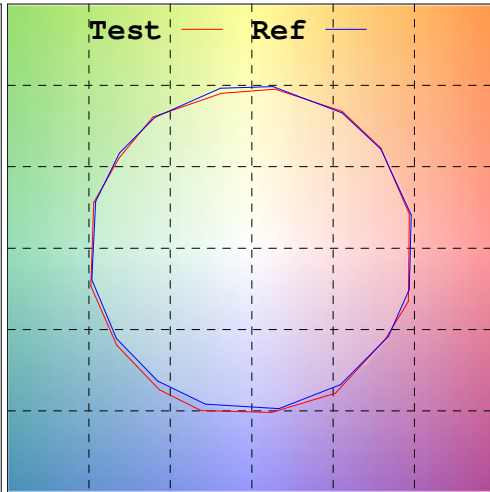
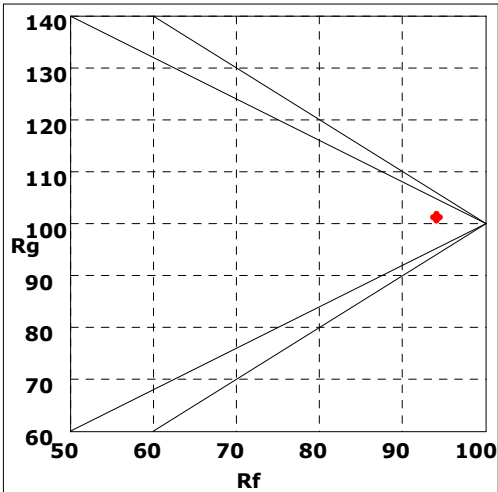
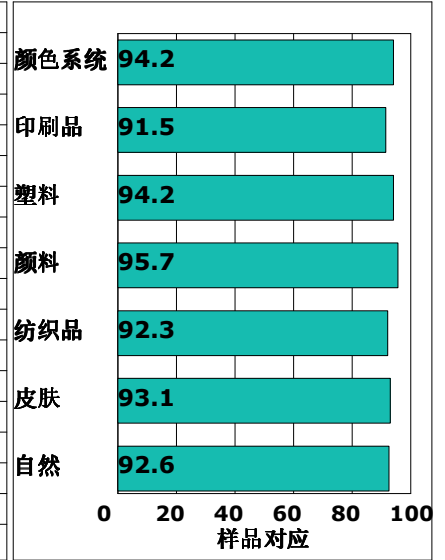
产品型号:
 产品编号:
 测试人员:
 备注:

制造厂商:
 测试单位:
 测试日期:09/11/23

Rf: 94.0 CCT: 3032K u': 0.2509
 Rg: 101.2 LER: 263.5 Duv: -0.00403 v': 0.5151

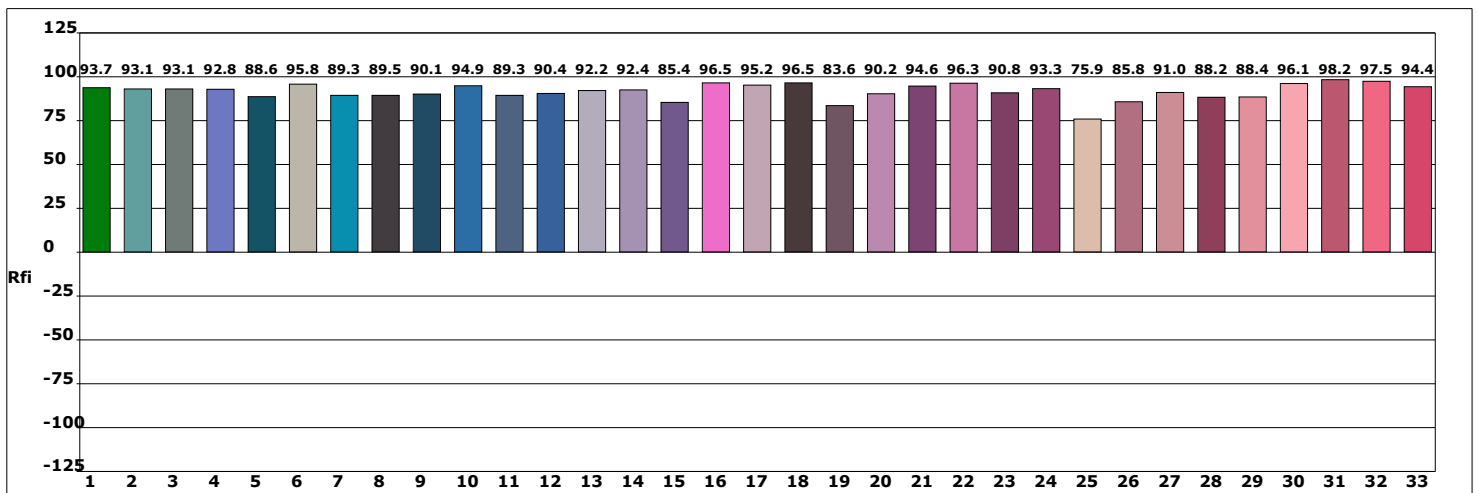
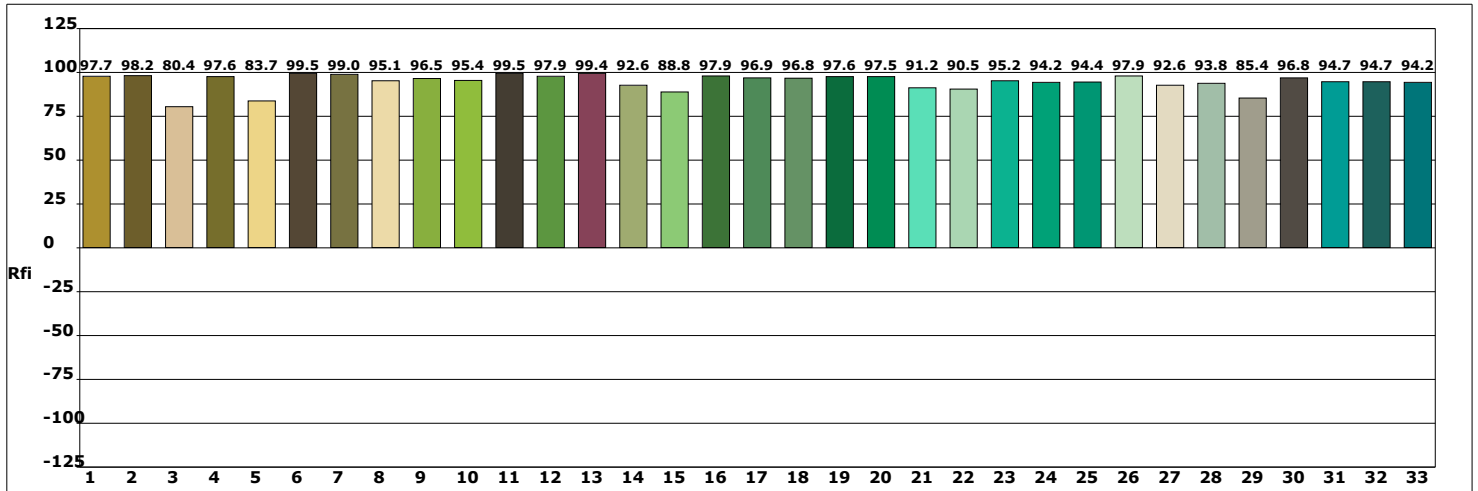
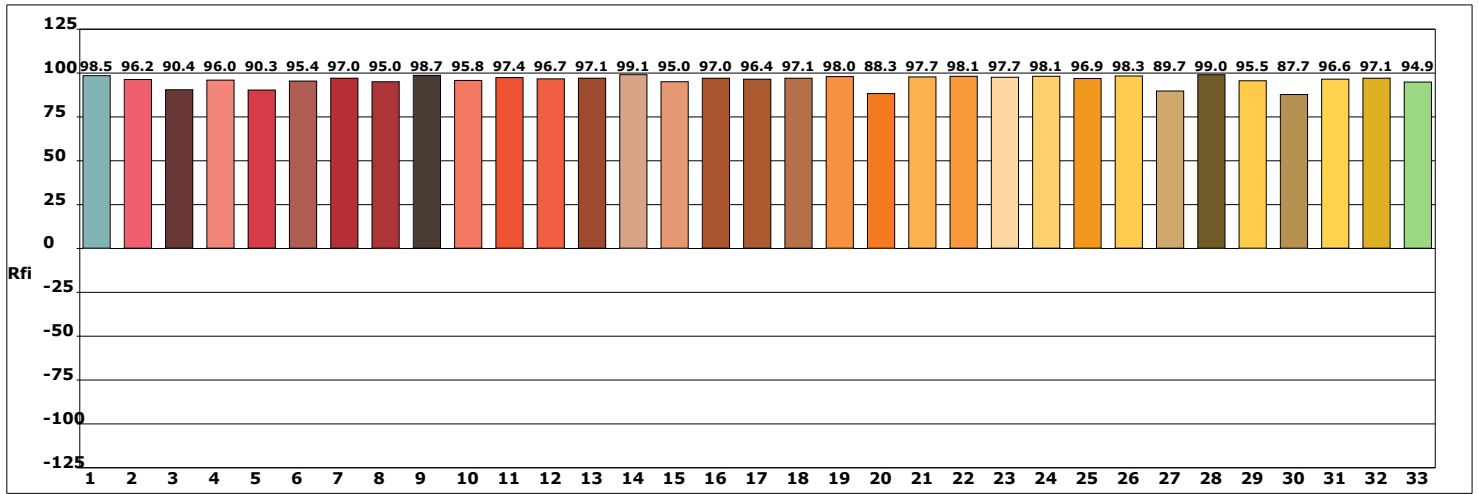


	500		
Hue Bin	Rf	Chroma	Hue
1	95.4	-0.9%	0.9%
2	96.9	0.2%	0.4%
3	95.9	0.7%	0.5%
4	95.4	-1.3%	-1.6%
5	94.2	-3.2%	0.0%
6	96.9	0.8%	0.8%
7	93.3	-1.5%	2.4%
8	97.2	1.1%	0.9%
9	93.7	1.3%	3.7%
10	92.6	2.0%	3.5%
11	92.3	3.9%	3.6%
12	91.3	4.3%	-1.8%
13	92.4	1.3%	-5.1%
14	91.2	2.7%	-5.5%
15	91.5	-0.6%	-2.4%
16	89.7	0.9%	-7.4%



产品型号:
 产品编号:
 测试人员:
 备注:

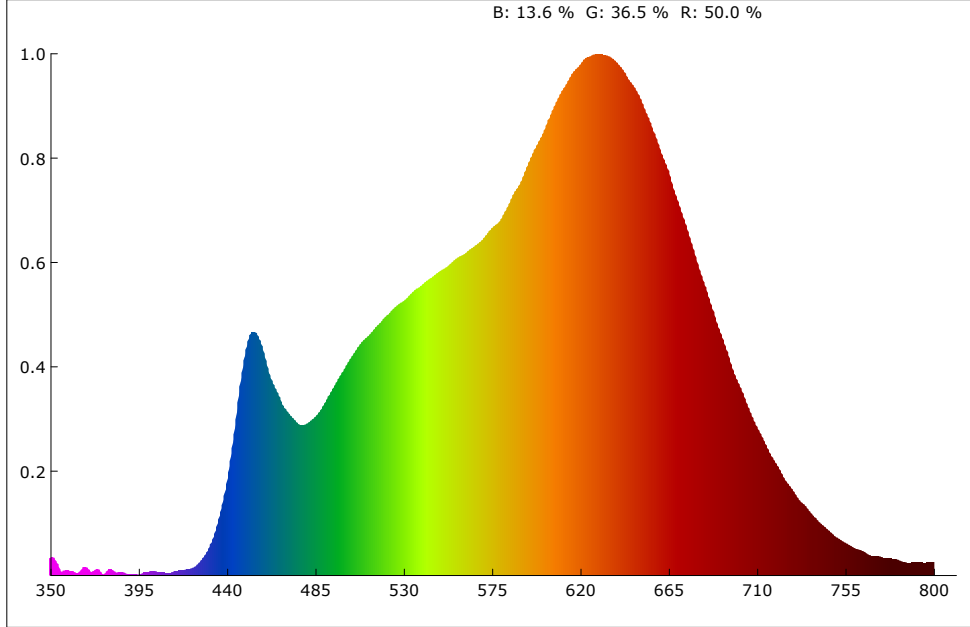
制造厂商:
 测试单位:
 测试日期:09/11/23



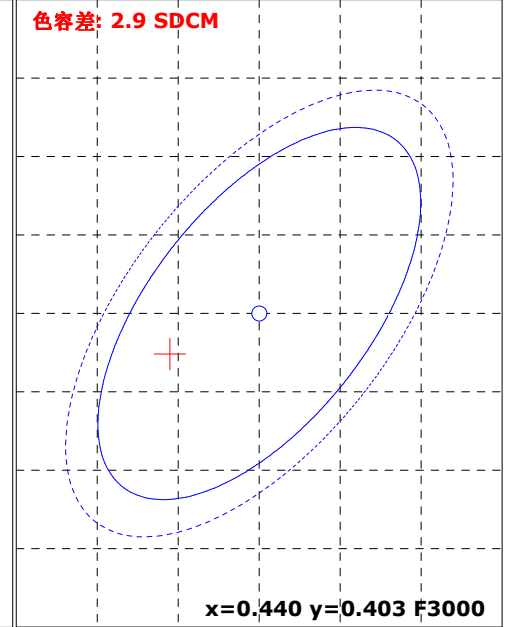
产品型号:
产品编号:
测试人员:
备注:

制造厂商:
测试单位:
测试日期:09/11/23

光谱图



SDCM



颜色参数:

坐标x: 0.4345 坐标y: 0.3974 坐标u: 0.2519 坐标v: 0.3456 坐标u': 0.2519 坐标v': 0.5184
 红色比: 50.0 % 绿色比: 36.5 % 蓝色比: 13.6 % 光通量红色比: 24.8 % 光通量绿色比: 73.1 % 光通量蓝色比: 2.2 %

显色指数: 96.6 AvgR: 95.7

R1: 97.2 R2: 97.2 R3: 98.9 R4: 98.4 R5: 97.1 R6: 93.9 R7: 95.6 R8: 95.0
 R9: 91.0 R10: 95.4 R11: 95.2 R12: 86.3 R13: 96.7 R14: 99.1 R15: 98.8

色温: 2985 K 光通量: 5286.234 lm 峰值波长: 628.5 nm 色容差: 2.9
 明暗视觉比: 1.5 中心波长: 605.1 nm 主波长: 583.8 nm 质心波长: 596.2 nm
 半宽度: 164.8 nm 色偏差: -0.00234 色纯度: 49.7 % 色质指数: 91.2
 LER(TM-30): 268.2 辐射功率: 19707.0 mw 色域指数(Rg): 100.3 逼真度(Rf): 93.5
 红光辐射功率: 9165.0 mw 近红辐射功率: 1254.6 mw 远红辐射功率: 63.4 mw

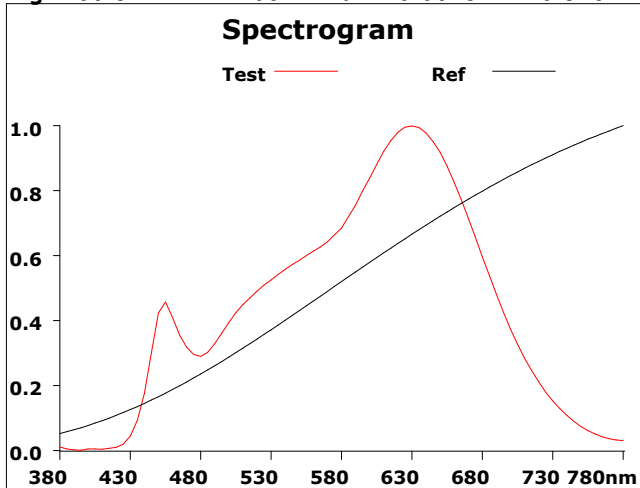
电参数:

光效: 18.4 Lm/W 能效: 20.1 能效等级: G
 电压: 222.7 V 电流: 1.327 A 功率: 286.600 W 功率因素: 0.969

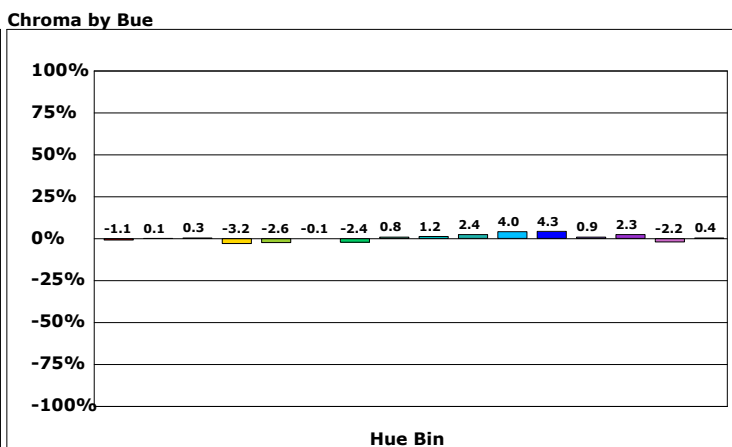
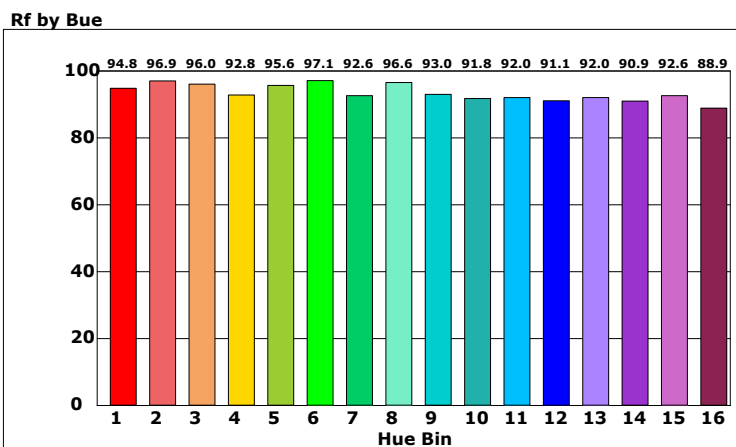
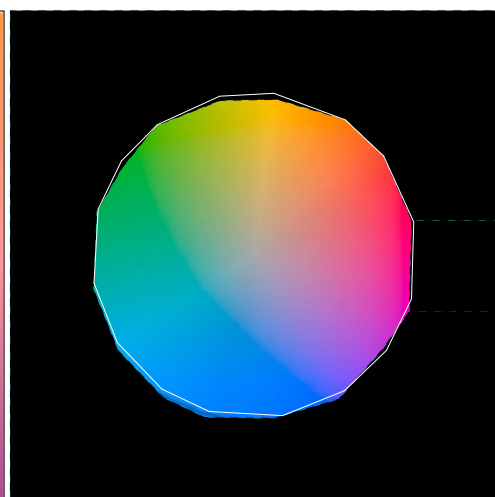
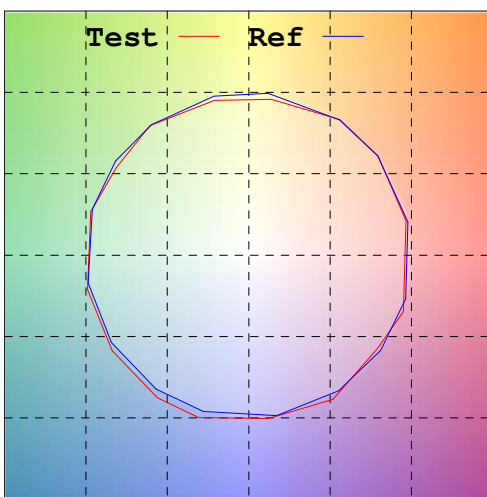
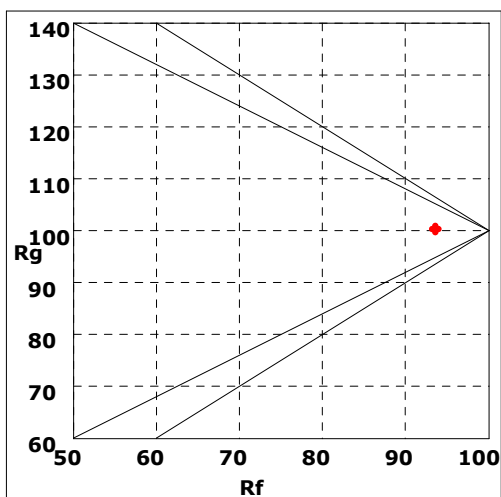
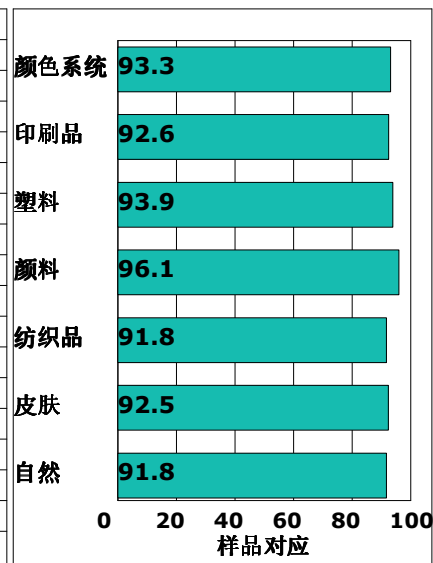
产品型号:
 产品编号:
 测试人员:
 备注:

制造厂商:
 测试单位:
 测试日期:09/11/23

Rf: 93.5 CCT: 2985K u': 0.2519
 Rg: 100.3 LER: 268.2 Duv: -0.00234 v': 0.5184

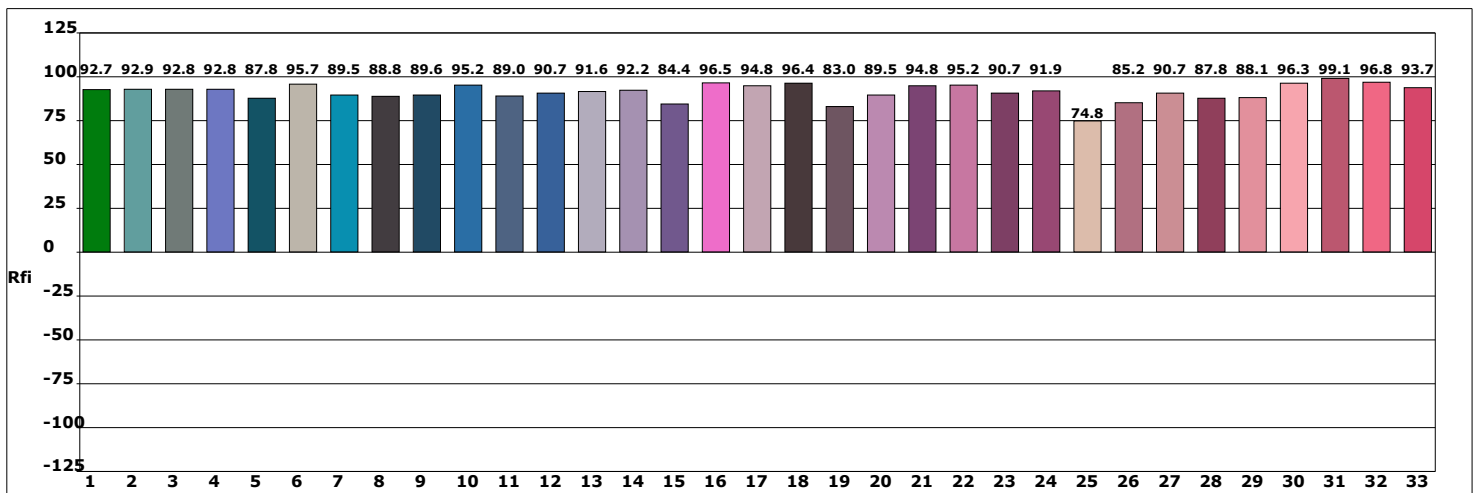
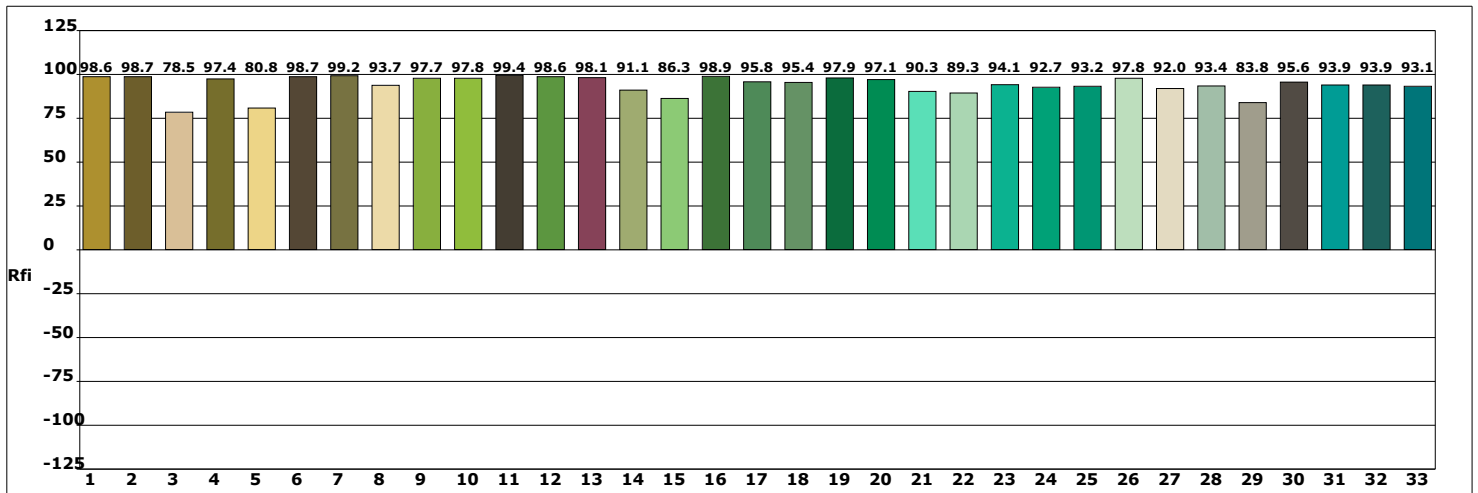
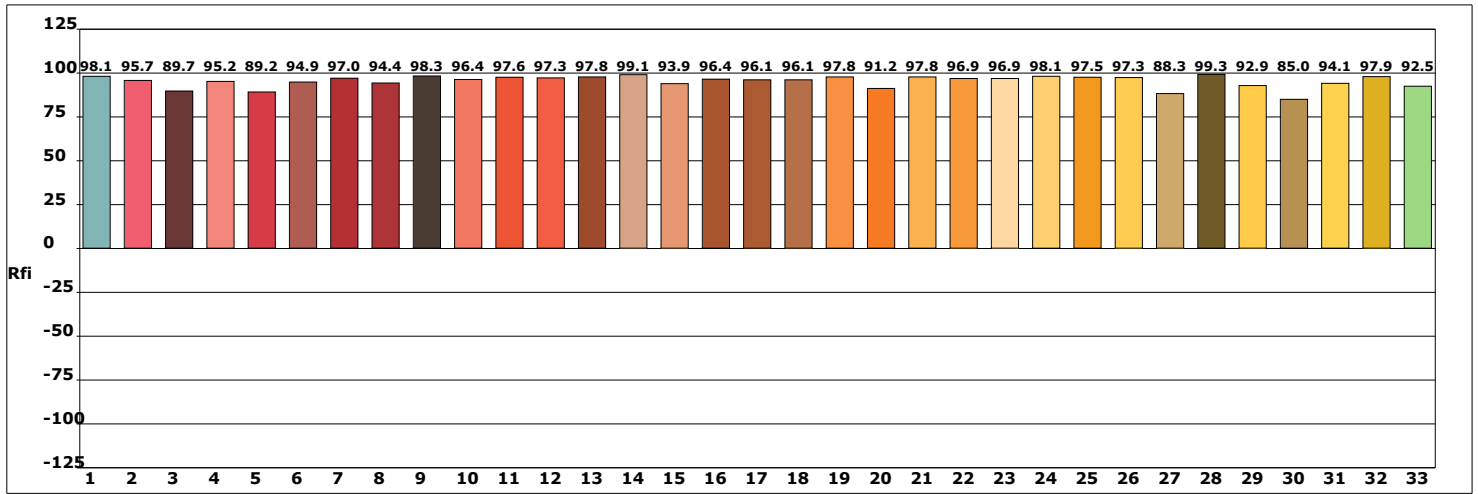


Hue Bin	Rf	Chroma	Hue
1	94.8	-1.1%	1.0%
2	96.9	0.1%	0.1%
3	96.0	0.3%	-0.1%
4	92.8	-3.2%	-2.8%
5	95.6	-2.6%	0.1%
6	97.1	-0.1%	1.2%
7	92.6	-2.4%	3.2%
8	96.6	0.8%	1.8%
9	93.0	1.2%	3.9%
10	91.8	2.4%	4.4%
11	92.0	4.0%	3.8%
12	91.1	4.3%	-2.2%
13	92.0	0.9%	-5.5%
14	90.9	2.3%	-5.9%
15	92.6	-2.2%	-0.1%
16	88.9	0.4%	-8.0%



产品型号:
 产品编号:
 测试人员:
 备注:

制造厂商:
 测试单位:
 测试日期:09/11/23



产品型号:
产品编号:
测试人员:
备注:

制造厂商:
测试单位:
测试日期:09/11/23