



CX903

3 IN 1 FLOORING NAILER

User Manual



TABLE OF CONTENTS

General Safety Instructions for Pneumatic Tools	3
CX903 Specific Safety Instructions	4
CX903 Features	5
Unpacking	6
Inventory.....	6
Firing Mechanism	6
Oiling the Nailer.....	7
Loading the Nailer	7
Operating the Nailer	7
Removing the Jammed Nails.....	8
Parts Diagram	9
Parts List.....	10
Warranty	12

GENERAL SAFETY INSTRUCTIONS FOR PNEUMATIC TOOLS

Extreme caution should be used when operating all pneumatic tools. Know your tool, be familiar with its operation, read through the user manual and practice safe usage procedures at all times.

- ❖ Keep all guards and safety devices in place and in working order.
- ❖ Always make sure to remove all the keys and wrenches before operation.
- ❖ Always keep your work area clean and well lighted.
- ❖ Do not use the pneumatic tools in damp or wet locations, or where flammable or noxious fumes may exist.
- ❖ Always keep bystanders away or at a safe distance from your work area.
- ❖ Disconnect the power source when changing drill bits, hollow chisels, router bits, shaper heads, blades, knives or making other adjustments or repairs.
- ❖ Never leave a tool unattended while it is in operation.
- ❖ Do not force the tool. It will do a better and safer job at the rate for which it is designed.
- ❖ Always use the right tool. Do not attach any part to the tool for which it is not designed.
- ❖ Always check the hose for any damage before using the pneumatic tool.
- ❖ Disconnect the tool before servicing, changing accessories, or moving to another location.
- ❖ Always check the tool for damaged or broken parts, loosen screws or bolts or any other unsafe condition that may affect the tool operation. Repair the damaged parts before operation.
- ❖ Do not overreach. Always keep proper footing and balance.
- ❖ Always use safety glasses and a dust mask while operation.
- ❖ Always keep your tool lubricated and clean for best and safest performance.
- ❖ Be alert! Do not use prescription or other drugs that may affect your ability or judgment to safely use your tool.

CX903 – 3 IN 1 FLOORING NAILER

SPECIFIC SAFETY INSTRUCTIONS

- ❖ Read and follow all the instructions and safety precautions in the user manual before operation.
- ❖ For the protection of your eyes, always wear safety glasses, goggles or face shield while operating this tool.
- ❖ Do not connect the nailer to compressed air that exceeds 120 PSI.
- ❖ Never point the nailer at others. Always carry the nailer by handle.
- ❖ Make sure the air hose is good condition and long enough to reach your work area without stretching.
- ❖ Make sure no body is standing close enough to be hit, when swinging the mallet.
- ❖ Make sure not to drive one nail on the top of the other. The nail may deflect and cause injury.
- ❖ Do not drive fasteners close to the edge of the work-piece as the wood may split, allowing the fastener to be deflected possibly causing injury.
- ❖ Always disconnect the air hose before installing nails, clearing a jam, moving to another work area, performing maintenance or when the tool is not in use.
- ❖ Do not use a check valve or any other fitting that allows air to remain in the tool. If used, the tool can remain charged with air after disconnecting and this will be able to drive a fastener even after the air hose is disconnected, possibly causing injury.
- ❖ Do not connect the nailer to pressurized oxygen or other combustible gases as a power source. Only use regulated compressed air.
- ❖ Do not use gasoline or any other flammable liquids to clean the nailer, vapors in the nailer will ignite by a spark and cause it to explode.
- ❖ Always use the fasteners for which the tool is designed.
- ❖ If the nailer is leaking air, damaged or not working properly, do not use it before repairing.
- ❖ Do not use the nailer, if you are not sure about its intended operation.
- ❖ Make sure you have read and understood all the safety instructions in the manual and you are familiar with your shaper, before operating it. If you fail to do so, serious injury could occur.

WARNING!

The safety instructions given above can not be complete because the environment in every shop is different. Always consider safety first as it applies to your individual working conditions.



CX903 – 3 IN 1 FLOORING NAILER

FEATURES

MODEL CX903 – 3 IN 1 FLOORING NAILER

As part of the new line of Craftex CX-Series pneumatic tools, we are proud to offer the CX903 a 3 in 1 Flooring Nailer. By following the instructions and procedures laid out in this user manual, you will receive years of excellent service and satisfaction. The CX903 is a professional tool and like all pneumatic tools, proper care and safety procedures should be adhered to.

✦ **TOOL AIR FITTING**

This tool uses a 1/4" NPT male plug

✦ **OPERATING PRESSURE**

70 - 115 PSI (MAX. 120 PSI)

✦ **AIR CONSUMPTION**

7.78 SCFM @ 102 PSI

✦ **NOISE CHARACTERISTIC VALUES**

The level of noise does not exceed 95 dB(A) with average of 82 dB(A).

✦ **NAILER DIMENSIONS**

52.2 cm x 10 cm x 42.8 cm

✦ **FASTENER SIZE**

Crown Width 1/2" (13mm) x Wire Size 15-1/2 to 16 Gauge x Max. Length 2" (50mm)

✦ **TOOL WEIGHT**

Weight: 10.8 lbs (4.9 kgs)

UNPACKING

The tool is properly packaged and shipped in a box. When unpacking, carefully inspect that the nailer has not been damaged during transit.

INVENTORY

- A. Flooring Nailer ----- 1
- B. Mallet ----- 1
- C. Safety Goggles ----- 1
- D. Bottle for Oil ----- 1
- E. Base Plate ----- 1
- F. Hex Wrenches ----- 2

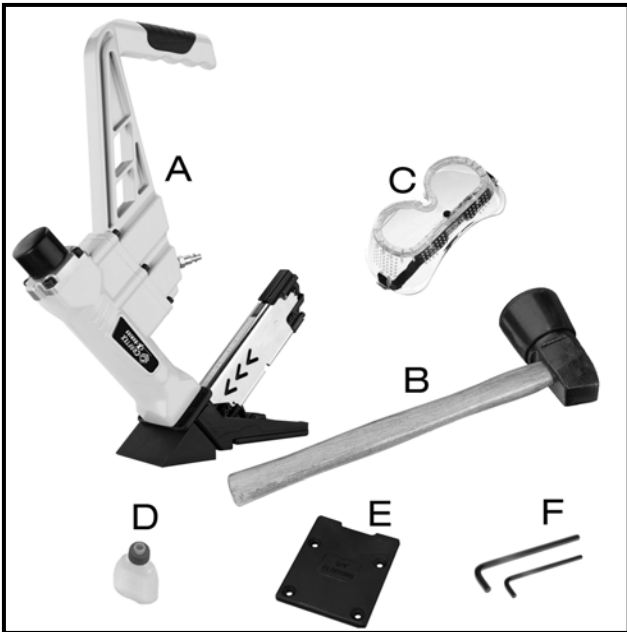


Figure-1 Inventory

FIRING MECHANISM

The CX903 does not fire when connected to the air supply, unless it is fired by hitting the "whack cap" with the mallet.

Before you load you nailer for the first time, check the firing mechanism to ensure the safe use.

To check the firing mechanism:

Make sure the nailer is disconnected from the air supply.

Make sure the magazine is empty.

Place the nailer on the floor with the fastener discharge part is facing down.

Connect the air hose to the nailer and it should not fire.

If the nailer does fire, immediately disconnect and do not use it until fixed.

If it does not fire, place the base of the nailer on a scrap of wood that is clean and free of any knots, nails, or other foreign objects.

Hit the whack cap with the mallet using moderate force and the nailer should fire.

If it does not fire, then the firing mechanism is not working properly. Do not use it until fixed. If it does fire, then the firing mechanism is working properly.

WARNING!
Do not fire the nailer when empty. Continually firing the nailer with empty magazine will cause internal damage. Only fire the empty nailer once or twice to make sure it is functioning properly.

OILING THE NAILER

The CX903 Nailer needs to be lubricated before every use. Place three to six drops of pneumatic tool oil (provided) in the nailer air inlet every two hours of continuous use. See figure-2.



Figure-2 Lubricating the nailer

LOADING THE NAILER

Disconnect the nailer from the air supply.

Slide a strip of nails, pointed-end down into the magazine.

Push the button inside the pusher, pull the pusher all the way back, then allow the pusher to slide forward against the nail strip.

OPERATING THE NAILER

Before operating the nailer, make sure you have read and understood the instructions given in this manual.

WARNING!

Lubricate the nailer with a few drops of oil as instructed in the manual, before operating it. Failure to do so could result in internal damage to the nailer and will void the warranty.

The CX903 comes with two base plates of different thickness. The thinner base plate is used with 3/4" flooring and the thicker base plate is used with 1/2" flooring.

To operate the nailer:

Attach the desired base plate to the nailer and place down the nailer on the floor with it is base.

Connect the air supply hose to the nailer.

Position a flooring strip and tap it into the place with the metal side of the mallet.

Do not position the flooring strip with the nailer. Always use the metal side of the mallet.

WARNING!

Always test the nailer on a sample flooring strip before installing pre finished flooring to make sure the nailer does damage the finish. Replace the base plate if it is damaged or it is damaging the floor.

Position the nailer with the guide plate on the flooring so that the cleat on the bottom of the nailer is lined up with the edge of the groove in the flooring. Use the mallet with its rubber end and hit the whack cap with moderate force to shoot a nail into the wood.

Make sure not to strike multiple times to shoot one nail into the wood. This will cause a jam or possible injury.

Now remove the nailer and check the nail for proper depth.

If the nail is shot too deep into the wood, slightly decrease the air pressure.

If the depth is too shallow, slightly increase the air pressure.

IMPORTANT

The depth of the nail into the wood is not always consistent due to variations in the flooring material. Some times you may want to tap a few nails flush with a hammer and a nail punch.

REMOVING JAMMED NAILS

Sometimes the nail gets jammed. Jammed nail must be removed before using the nailer again.

To clear the jammed nail:

Disconnect the air supply to the nailer.

Pull the magazine loader all the way back and remove the nail stick.

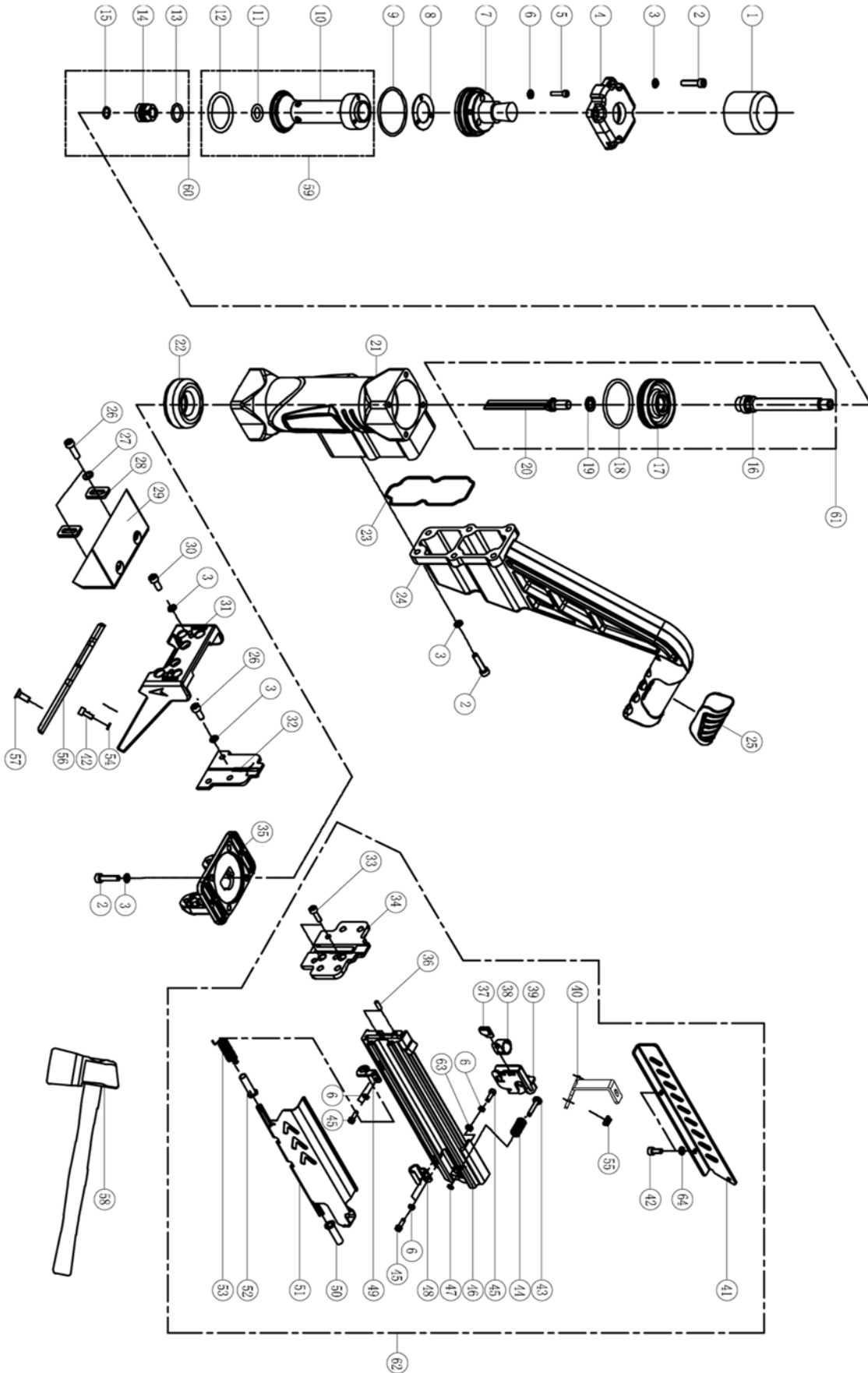
Now, use needle nose pliers to remove the jammed nail.

If the jammed nail can not be removed, remove the cap screws securing the magazine.

Now the jammed nail should be visible. Remove the jammed nail with a pair of needle nose pliers.

Re-install the magazine, and load a new nail stick.

CX903 PARTS DIAGRAM



CX903 PARTS LIST

ITEM NO	PART NO.	DESCRIPTION	PCS
1	A. 03. 09. 0201	Hammer Face	1
2	A. 00. 00. 0281	Screw 6*25	14
3	A. 00. 05. 0021	Washer#6	21
4	A. 09. 25. XXX1	Cylinder CAP	1
5	A. 00. 00. 0081	Screw 4*20	3
6	A. 00. 05. 0001	Washer#4	9
7	A. 03. 14. 0021	Plunger	1
8	A. 02. 05. 0231	Gasket	1
9	A. 02. 00. 1281	O-ring 51.5*2.65	1
10	A. 03. 03. 0241	Cylinder barrel	1
11	A. 02. 00. 1311	O-Ring 13*3.5	1
12	A. 02. 00. 1321	O-Ring 34*4.6	1
13	A. 02. 00. 1301	O-Ring 16*2.65	1
14	A. 00. 04. 0071	Piston nut	1
15	A. 02. 00. 1291	O-Ring 13.2*1.8	1
16	A. 06. 01. 0121	Piston rod	1
17	A. 06. 02. 0261	Piston head	
18	A. 02. 00. 1331	O-Ring 50*3.55	1
19	A. 00. 05. 0271	Washer #10	
20	A. 06. 00. 0791	Driver blade	1
21	A. 04. 30. XXX1	Body	1
22	A. 03. 09. 0211	Bumper	1
23	A. 02. 05. 0241	GASKET	1
24	A. 03. 16. 0041	Handle	1
25	A. 02. 04. 0381	Grip	1
26	A. 00. 00. 0551	Screw 6*15	5
27	A. 00. 05. 0301	Washer#6	2
28	A. 08. 00. 0441	Washer	2
29	A. 07. 06. 0441	Supporting Seat	1
30	A. 00. 00. 0271	Screw 6*20	4
31	A. 07. 01. 0751	The front base	1
32	A. 08. 00. 0451	Spacer	1
33	A. 00. 00. 0181	Screw 5*16	2
34	A. 08. 01. 1221	Driver Guide	1
35	A. 07. 04. 0291	Front seat	1
36	A. 00. 01. 0131	Pin 3*12	2
37	A. 07. 19. 0371	Spring ring fixing hook	1
38	A. 01. 02. 0011	Spring	1

ITEM NO	PART NO.	DESCRIPTION	PCS
39	A. 07. 07. 0631	Pusher	1
40	A. 07. 06. 0451	Magazine Support	1
41	A. 07. 00. 0581	Right side cover	1
42	A. 00. 00. 0161	Screw 5*12	4
43	A. 00. 06. 0531	Pin	1
44	A. 01. 00. 0651	Spring	1
45	A. 00. 00. 0031	Screw 4*12	5
46	A. 07. 01. 0761	Lower Mag	1
47	A. 00. 05. 0061		1
48	A. 07. 19. 0381	After the positioning frame	1
49	A. 00. 07. 0021	Front positioning rack	1
50	A. 00. 07. 0041	After Locating sleeve	1
51	A. 07. 00. 0591	Left cover	1
52	A. 00. 07. 0011	Front Locating sleeve	1
53	A. 01. 06. 0031	Spring	1
54	A. 00. 05. 0321	Washer	2
55	A. 00. 04. 0011	Nylon Nut (M5)	2
56	A. 08. 00. 0461	Washer 3/4	1
57	A. 00. 00. 0561	Screw 6*16	4
58	B. 11. 01. 0001	A hammer assembly	1
59	B. 03. 03. 0241	Cylinder assembly	1
60	B. 00. 04. 0071	Piston nut assembly	1
61	B. 06. 00. 0701	Piston Set	1
62	B. 07. 01. 0761	MAGAZINE SET	1
63	A. 00. 05. 0282	Washer	1
64	A. 00. 05. 0011	Washer #5	2



WARRANTY

CRAFTEX 3 YEARS LIMITED WARRANTY

Crafter warrants every product to be free from defects in materials and agrees to correct such defects where applicable. This warranty covers **three years** for parts and 90 days for labour (unless specified otherwise), to the original purchaser from the date of purchase but does not apply to malfunctions arising directly or indirectly from misuse, abuse, improper installation or assembly, negligence, accidents, repairs or alterations or lack of maintenance.

Proof of purchase is necessary.

All warranty claims are subject to inspection of such products or part thereof and Crafter reserves the right to inspect any returned item before a refund or replacement may be issued.

This warranty shall not apply to consumable products such as blades, bits, belts, cutters, chisels, punches etceteras.

Crafter shall in no event be liable for injuries, accidental or otherwise, death to persons or damage to property or for incidental contingent, special or consequential damages arising from the use of our products.

RETURNS, REPAIRS AND REPLACEMENTS

To return, repair, or replace a Crafter product, you must visit the appropriate Busy Bee Tools showroom or call 1-800-461-BUSY. Crafter is a brand of equipment that is exclusive to Busy Bee Tools.

For replacement parts directly from Busy Bee Tools, for this machine, please call 1-800-461-BUSY (2879), and have your credit card and part number handy.

- All returned merchandise will be subject to a minimum charge of 15% for re-stocking and handling with the following qualifications.
- Returns must be pre-authorized by us in writing.
- We do not accept *collect* shipments.
- Items returned for warranty purposes must be insured and shipped pre-paid to the nearest warehouse
- Returns must be accompanied with a copy of your original invoice as proof of purchase. Returns must be in an un-used condition and shipped in their original packaging a letter explaining your reason for the return. Incurred shipping and handling charges are not refundable.
- Busy Bee will repair or replace the item at our discretion and subject to our inspection.
- Repaired or replaced items will be returned to you pre-paid by our choice of carriers.
- Busy Bee reserves the right to refuse reimbursement or repairs or replacement if a third party without our prior authorization has carried out repairs to the item.
- Repairs made by Busy Bee are warranted for 30 days on parts and labour.
- Any unforeseen repair charges will be reported to you for acceptance prior to making the repairs.
- The Busy Bee Parts & Service Departments are fully equipped to do repairs on all products purchased from us with the exception of some products that require the return to their authorized repair depots. A Busy Bee representative will provide you with the necessary information to have this done.
- For faster service it is advisable to contact the nearest Busy Bee location for parts availability prior to bringing your product in for repairs.