



## OWNER'S MANUAL



## CT074 – CANISTER DUST COLLECTOR



# CT074 CANISTER DUST COLLECTOR

## INDEX

<b>GENERAL SAFETY INSTRUCTIONS</b>	<b>Page 3</b>
<b>SPECIFIC SAFETY INSTRUCTIONS</b>	<b>Page 4</b>
<u>Features</u>	Page 5
Illustrated Features	Page 6
Unpacking	Page 7
Grounding	Page 8
<u>Assembly</u>	
Base Plate Assembly	Page 9
Motor/Impeller Assembly	Page 9
Collector Ring Supports	Page 10
Collector Ring	Page 10
Collector Hose	Page 11
Dual Inlet Assembly	Page 12
Lower Collector Bag	Page 13
<u>Canister Components</u>	Page 14
Canister Handle Assembly	Page 15
Canister Assembly	Page 16
<u>Schematic/Part Listings</u>	
Completed Canister Dust Collector	Page 17
CT074 Schematic Drawing	Page 18
CT074 Parts List	Page 19
Canister Schematic	Page 20
Canister Parts List	Page 21
Warranty	Page 22

# CT074 CANISTER DUST COLLECTOR

## GENERAL SAFETY INSTRUCTIONS

EXTREME CAUTION SHOULD BE USED IN OPERATING ALL POWER TOOLS. KNOW YOUR POWER TOOL, BE FAMILIAR WITH ITS OPERATION. READ THE OWNER'S MANUAL AND PRACTICE SAFE USAGE PROCEDURES AT ALL TIMES.

- ❑ **CONNECT** your machine **ONLY** to the matched and specified power source.
- ❑ **WEAR SAFETY GLASSES, RESPIRATORS, HEARING PROTECTION** and **SAFETY SHOES** when operating heavy machinery. Always wear safety glasses.
- ❑ **DO NOT** wear loose clothing or jewellery when operating machinery.
- ❑ **A Safe Environment is important.** Keep the area free of dust, dirt and other debris in the immediate vicinity of the machine.
- ❑ **BE ALERT!** Do Not Use prescription or other drugs that may affect your ability or judgement to safely use this machine.
- ❑ **DISCONNECT** the power source when making adjustments or repairs.
- ❑ **NEVER** leave an operating tool unattended.
- ❑ **ALWAYS** keep all safety guards in place and ensure their proper function.
- ❑ **ALWAYS** make sure that any tools used for adjustments are removed before operating the machine.
- ❑ **ALWAYS** keep bystanders safely away while operating machinery.
- ❑ **THINK SAFETY. WORK SAFELY.** Never attempt a procedure if it does not feel safe or comfortable.

## **CT074 CANISTER DUST COLLECTOR**

### **SPECIFIC SAFETY INSTRUCTIONS**

- ❑ The CT074 is designed to collect sawdust ONLY.
- ❑ **NEVER** attempt to use this Dust Collector to vacuum water or any other liquids.
- ❑ **NEVER** try to use this Dust Collector to collect wood scraps.
- ❑ **NEVER** attempt to use this Dust Collector to collect metal materials such as screws, nails or other metal parts.
- ❑ **NEVER** remove the filter bag or the canister bag with the motor operating.
- ❑ **NEVER** operate the Dust Collector with all blast gates closed.
- ❑ **NEVER** disconnect the CT074 from its power source when changing or emptying the bags.
- ❑ **ALWAYS** be sure that the collection bag and canister are securely fastened to the Collector Body while in use.

# CT074 CANISTER DUST COLLECTOR

## FEATURES

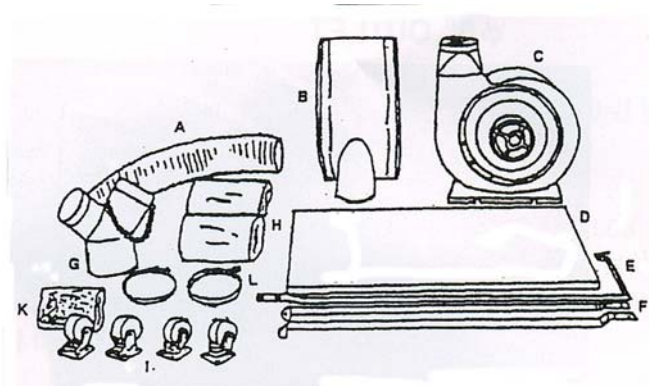
As part of the growing line of Craftex woodworking equipment, we are proud to offer the CT074 Canister Dust Collector. The Craftex name guarantees Craft Excellence. By following the instructions and procedures laid out in this owner's manual, you will receive years of excellent service and satisfaction. The CT074 is a professional tool and like all power tools, proper care and safety procedures should be adhered to.

- ❑ Motor – 1 ½ HP, 220v Single phase.
- ❑ Safety Power Switch with Removable Key.
- ❑ Balanced 11" Steel Impeller
- ❑ Air Suction Capacity – 1,050 CFM (with Canister in place).
- ❑ Static Pressure – 7.5" in H<sup>2</sup>O
- ❑ Transparent Polyethylene Lower bag for content visibility.
- ❑ Mobile base for ease of movement.
- ❑ May be installed without Casters for stationary use.
- ❑ Canister contains a V-Weave Spun-Bond Polyester Filter that contains 6-times the surface and filters to 1-micron.
- ❑ Internal Flapper allows for easy removal of caked-on dust within the Canister by turning handle.
- ❑ Inlet Diameter: 5" x 4" x 2"
- ❑ Canister Filter Diameter: 19 5/8"
- ❑ Canister Filter Height: 23 5/8"
- ❑ Includes a standard Grounding Kit.

# CT074 CANISTER DUST COLLECTOR

## UNPACKING

When removing contents of your CT074, proper care should be taken to make sure all components are carefully removed. Some components may be shipped with a preservative applied to them and this should be removed with mineral spirits prior to assembly.



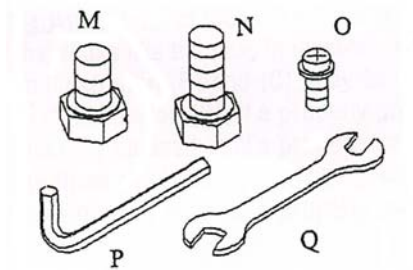
### Components

The components included in the main carton are:

- A) 5" Flexible Hose.
- B) Collector Support Frame.
- C) Impeller Frame.
- D) Base Plate.
- E) Upper Bag Support Rod. (Not Required in this Model).
- F) Collector Frame Support Rod.
- G) Dual Inlet (4") Connector.
- H) Bottom Bag.
- J) Casters.
- K) Fittings.
- L) Hose Clamps.

### Fittings

- M) Hex Head Bolt, 5/16" – 18 x 1/2" – 24 pieces.
- N) Hex Head Bolt, 5/16" - 18 x 3/4"- 4 pieces.
- O) Round Head Screw, 3/16" – 24 x 3/8" – 1 piece.
- P) Hex Wrench – 5mm
- Q) Wrench – 10mm & 12mm.



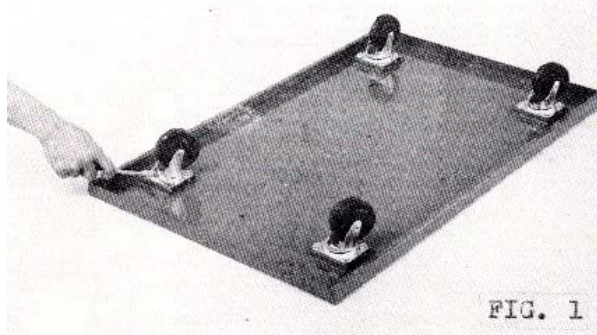
# CT074 CANISTER DUST COLLECTOR

## ASSEMBLY INSTRUCTIONS

### Base Plate Assembly

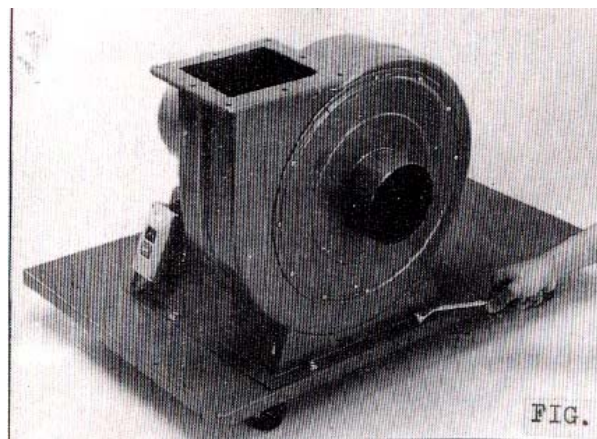
Select the Base Plate and turn it upside down. Select the 4 Casters from the Parts Bag and fasten to the Base Plate as illustrated. Select the appropriate nuts, bolts and washers and tighten securely with the Metric Wrench provided.

Note; Eliminate this step if you not require casters.



### Motor/Impeller Assembly

Turn the Base Plate to its upright position and select the Motor/Impeller unit. Place the Motor/Impeller on the Base Plate and align the holes as shown. Select the appropriate nuts, bolts and washers to secure the Motor/Impeller and tighten.

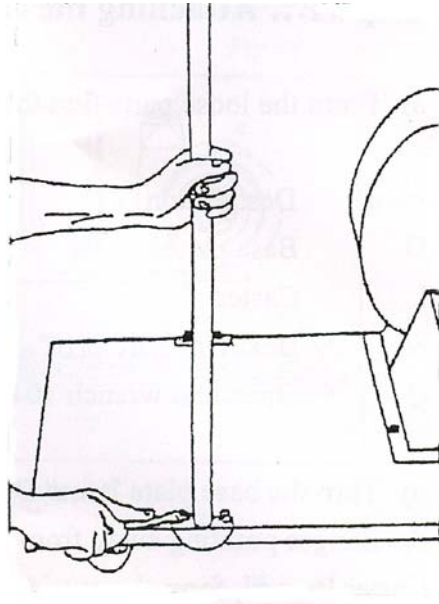


# CT074 CANISTER DUST COLLECTOR

## ASSEMBLY CONT...

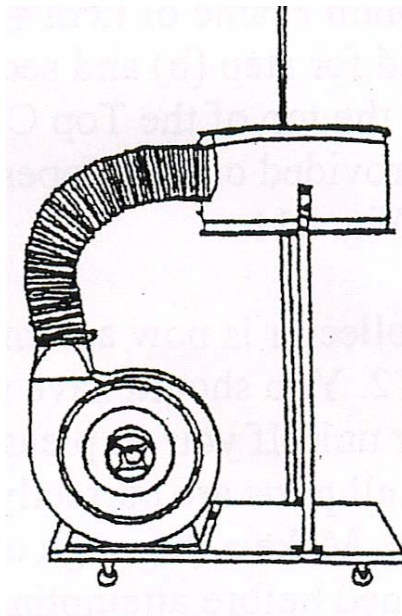
### Collector Ring Supports

Select the 2 collector ring support rods and fasten them to the base plate using the appropriate nuts, bolts and washers from the parts package. Tighten securely



### Assembling the Collector Ring

Using the appropriate nuts, securely fasten the collector ring assembly to the collector ring supports. Be certain that the opening for the collector hose is facing the motor/impeller assembly





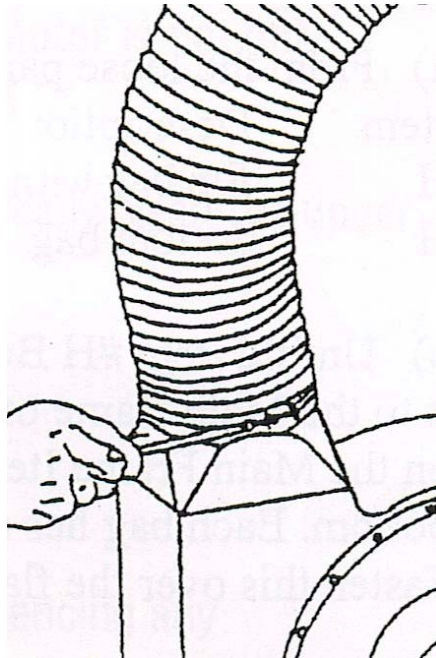
# CT074 CANISTER DUST COLLECTOR

## ASSEMBLY CONT...

### Assembling the Collector Hose

Select the 5" collector PVC hose from the parts package and the 2 expandable 5" hose clamps. Fit one end of the collector hose over the opening in the motor/assembly and using one of the expandable hose clamps, tighten it securely.

Install the other end of the collector hose to the opening in the collector ring, being sure to put the expandable hose clamp on the hose beforehand. Tighten the expandable hose clamp securely.

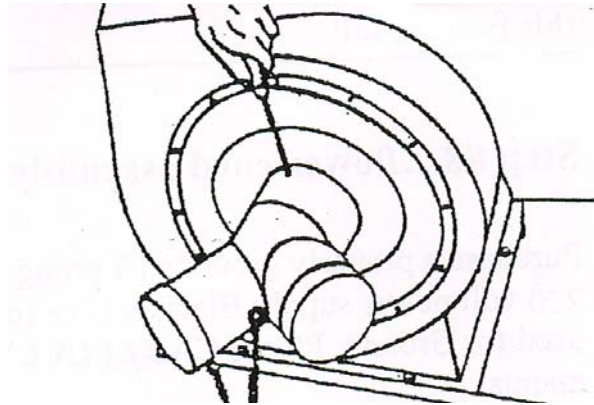


# CT074 CANISTER DUST COLLECTOR

## ASSEMBLY CONT...

### Assembling the Dual Inlet

Select the dual inlet connector from the parts package and install the 5” single inlet end onto the similar opening on the motor/impeller assembly. Use a round head screw to keep the dual inlet position. You can position the “Y” in any desired position.



### Assembling the Lower Collector Bag

Select the clear polyethylene collector bag from the parts package and unfold it. Attach the transparent bag to the lower flange of the collector ring by using the metal strap and buckle (Clamp). The collector bag has loops for the strap to go through (underneath) for ease of installation. Be sure that the lower collector bag is securely fastened to the flange.

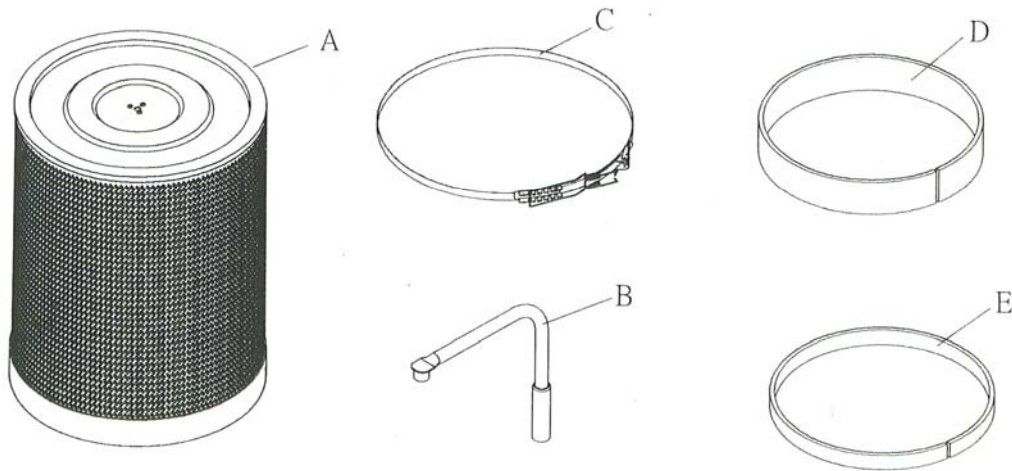


# CT074 CANISTER DUST COLLECTOR

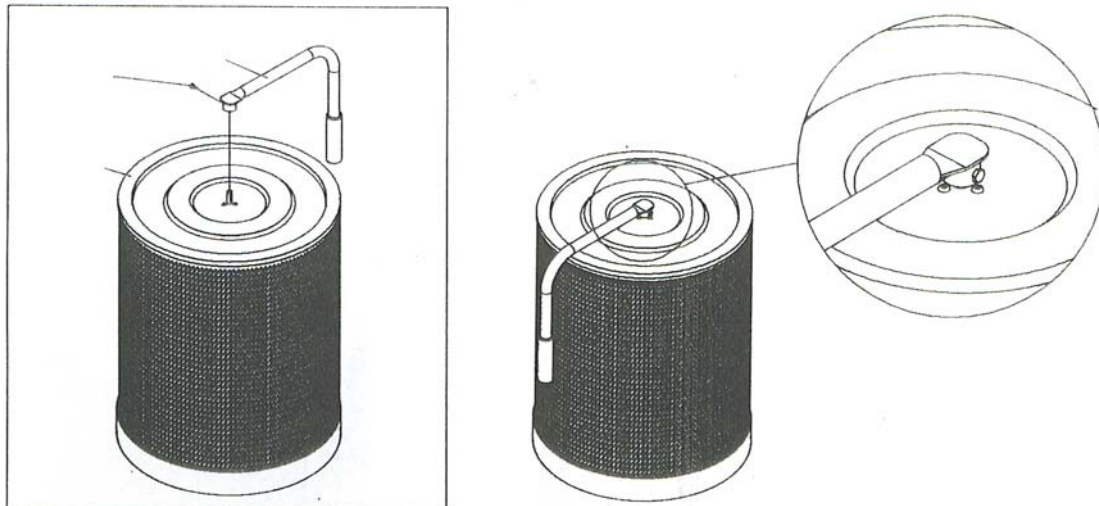
## ASSEMBLY CONT...

### Canister Assembly

The CT074 Canister is shipped in a separate package containing the components shown below. Care should be taken when unpacking these items.

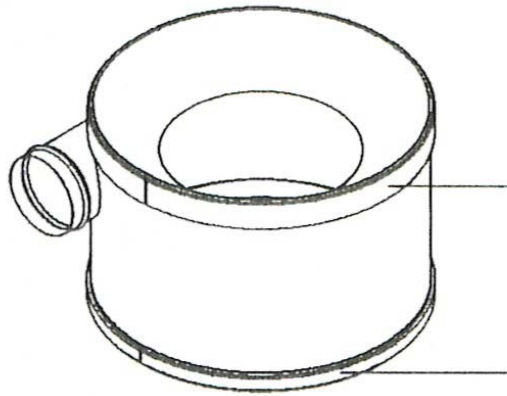


Mount the handle (B) to the top of the Canister (A) unit by tightening the hex-head screw. Be sure the screw is securely tightened.

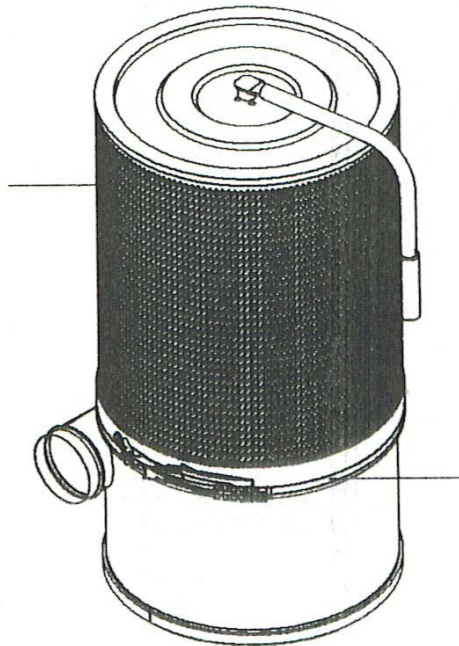


## CT074 CANISTER DUST COLLECTOR ASSEMBLY CONT...

Adhere the adhesive backed foam gasket (D) on the upper flange of the dust collector ring as illustrated. As well, stick the narrower adhesive backed foam gasket to the lower flange of the collector ring. These gaskets will help prevent any sawdust leakage into the surrounding area.



Place the completed canister on top of the collector ring and secure it with the strap clamp (C) as illustrated.



# CT074 CANISTER DUST COLLECTOR

Your CT074 Canister Dust Collector should now be fully set up and ready to help clean your shop.

Wood dust can be very dangerous if one is exposed to it very often. As dust collection has gained popularity over the years, so has consumer knowledge about this concern, but it is always good to know just how dangerous wood dust can be if overexposure and or unsafe woodworking practice takes place.

Health Risk and Hazards that can be caused by exposure to wood dust include the following:

- Asthma
- Eye Irritation
- Hypersensitivity
- Skin Irritation
- Dermatitis
- Acute Airway Obstructions
- Chronic Bronchitis
- Nasal Cancer

## Helpful Formulas

**Velocity (FPM)** = Volume (CFM) / Cross Sectional Area (ft.<sup>2</sup>)

**Volume (CFM)** = Velocity (FPM) x Cross Sectional Area (ft.<sup>2</sup>)

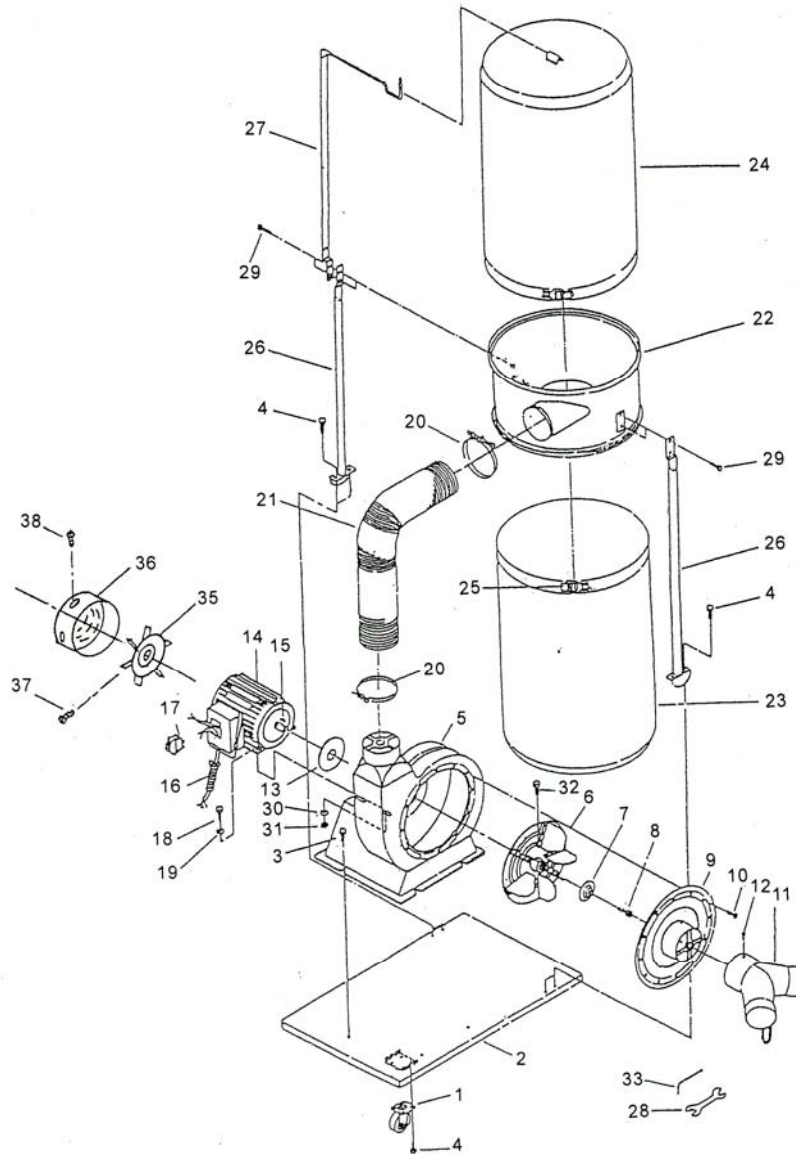
**Cross Sectional Area (ft.<sup>2</sup>)** = Volume (CFM) / Velocity (FPM)

**Circle Area** = 3.142 x Radius<sup>2</sup>

**Diameter** = 2 x Radius

# CT074 CANISTER DUST COLLECTOR

## SCHEMATIC DRAWING



## CT074 CANISTER DUST COLLECTOR

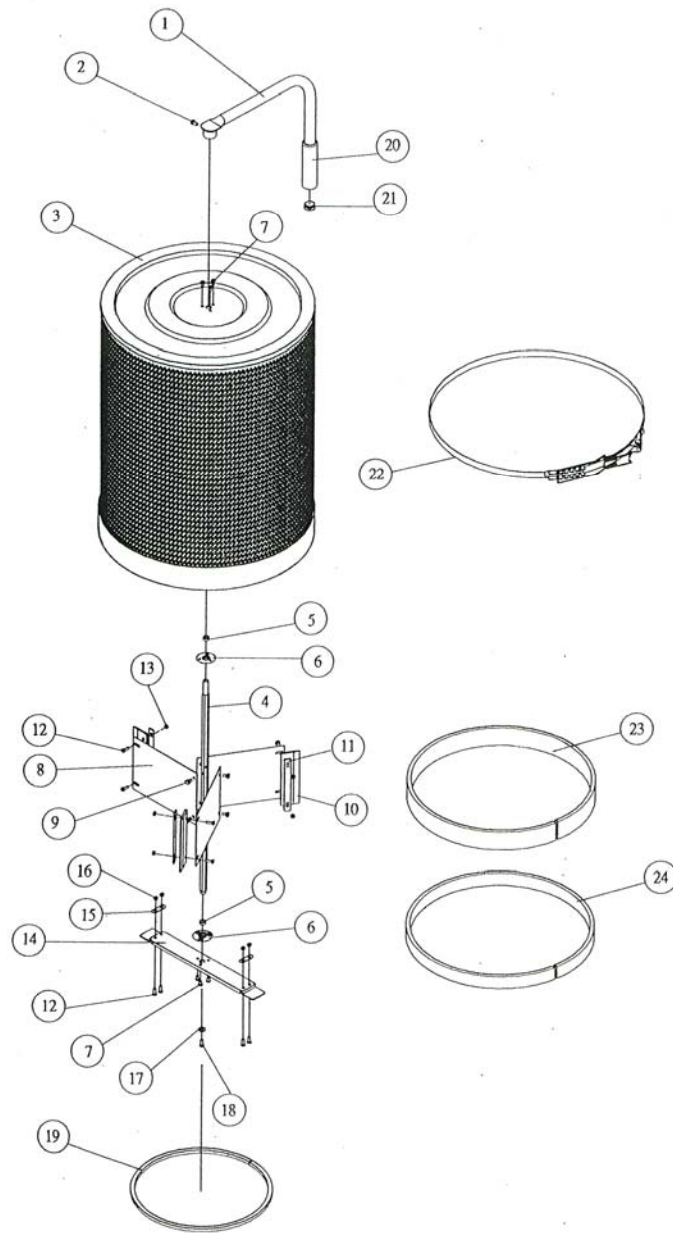
### PARTS LIST

NO.	DESCRIPTION	SPECIFICATION	QTY.
1	Caster		4
2	Base Plate		1
3	Screws – Hex Head	5/16" – 18 x 1/2"	4
4	Screws – Hex head	5/16" – 18 x 1/2"	20
5	Main Frame Assy.		1
6	Impeller Assy.		1
7	Impeller Washer		1
8	Hex Screw	M6 x 1.0 x 19mm	1
9	Inlet Cover		1
10	Screws – Pan Head	3/16" – 24 x 3/8"	12
11	Dual Inlet Connector		1
12	Screw – Pan Head	3/16 – 24 x 3/8"	1
13	Gasket		1
14	Motor		1
15	Key	6 x 6 x 25mm	1
16	Power Cord		1
17	Power Switch		1
18	Screw – Hex Head	5/16" – 18	4
19	Washer	5/16"	4
20	Hose Clamp -	5"	2
21	Hose -	5"	1
22	Collector		1
23	Collector Bag		1
24	N/A		
25	Strap & Buckle		2
26	Collector Support Rod		2
27	N/A		
28	Wrench	10 x 12mm	1
29	Hex head Screw	5/16" – 18 x 3/4"	4
30	Washer	5/16"	4
31	Nut	5/16" 18x18	4
32	Hex head Screw	5/16" 18 x 5/16"	1
33	Hex Wrench	5mm	1
34	Capacitor	400MFD/125v	1
35	Motor Fan		1
36	Motor Cover		1
37	Round head Screw	1/4" x 3/8"	1
38	Round Head Screw	3/16" x 1/4"	3



# CT074 CANISTER DUST COLLECTOR

## CANISTER SCHEMATIC





**CT074 CANISTER DUST COLLECTOR**  
**CANISTER PARTS LIST**

<b>No.</b>	<b>DESCRIPTION</b>	<b>SPECIFICATION</b>	<b>QTY.</b>
1	Handle		1
2	Hex Head Screw	M6 x 16	1
3	Canister Filter		1
4	Hex Spindle		1
5	Thread Bearing		2
6	Bearing Plate		2
7	Half Round Head Screw	M5 x 10	6
8	Clip Board		3
9	Hex Head Screw	M6 x 10	6
10	Flapper		3
11	Flapper Plate		3
12	Round Head Screw	M5 x 15	10
13	Self Locking Nut	M5	6
14	Bottom Plate		1
15	Fixing Plate		2
16	Nut	M5	4
17	Washer	¼"	1
18	Round head Screw	M6 x 10	1
19	Foam Gasket		1
20	Foam Gasket		1
21	Cap	1"	1
22	Belt Clamp		1
23	Foam		1
24	Foam		1



## CRAFTEX 3 YEAR LIMITED WARRANTY

Craftex warrants every product to be free from defects in materials and agrees to correct such defects where applicable. This warranty covers **three years** for parts and 90 days for labour (unless specified otherwise), to the original purchaser from the date of purchase but does not apply to malfunctions arising directly or indirectly from misuse, abuse, improper installation or assembly, negligence, accidents, repairs or alterations or lack of maintenance.

*Proof of purchase is necessary.*

All warranty claims are subject to inspection of such products or part thereof and Craftex reserves the right to inspect any returned item before a refund or replacement may be issued.

This warranty shall not apply to consumable products such as blades, bits, belts, cutters, chisels, punches etceteras.

Craftex shall in no event be liable for injuries, accidental or otherwise, death to persons or damage to property or for incidental contingent, special or consequential damages arising from the use of our products.

### RETURNS, REPAIRS AND REPLACEMENTS

To return, repair, or replace a Craftex product, you must visit the appropriate Busy Bee Tools showroom. Craftex is a brand of equipment that is exclusive to Busy Bee Tools. For replacement parts directly from Busy Bee Tools, for this machine, please call 1-800-461-BUSY(2879), and have your credit card and part number handy.

- All returned merchandise will be subject to a minimum charge of 15% for re-stocking and handling with the following qualifications.
- Returns must be pre-authorized by us in writing.
- **We do not accept collect shipments.**
- Items returned for warranty purposes must be insured and shipped pre-paid to the nearest warehouse (see locations on inside back cover of this manual).
- Returns must be accompanied with a copy of your original invoice as proof of purchase. Returns must be in an un-used condition and shipped in their original packaging a letter explaining your reason for the return. Incurred shipping and handling charges are not refundable.
- Busy Bee will repair or replace the item at our discretion and subject to our inspection.
- Repaired or replaced items will be returned to you pre-paid by our choice of carriers.
- Busy Bee reserves the right to refuse reimbursement or repairs or replacement if a third party without our prior authorization has carried out repairs to the item.
- Repairs made by Busy Bee are warranted for 30 days on parts and labour.
- Any unforeseen repair charges will be reported to you for acceptance prior to making the repairs.
- The Busy Bee Parts & Service Departments are fully equipped to do repairs on all products purchased from us with the exception of some products that require the return to their authorized repair depots. A Busy Bee representative will provide you with the necessary information to have this done.
- For faster service it is advisable to contact the nearest Busy Bee location for parts availability prior to bringing your product in for repairs.







