

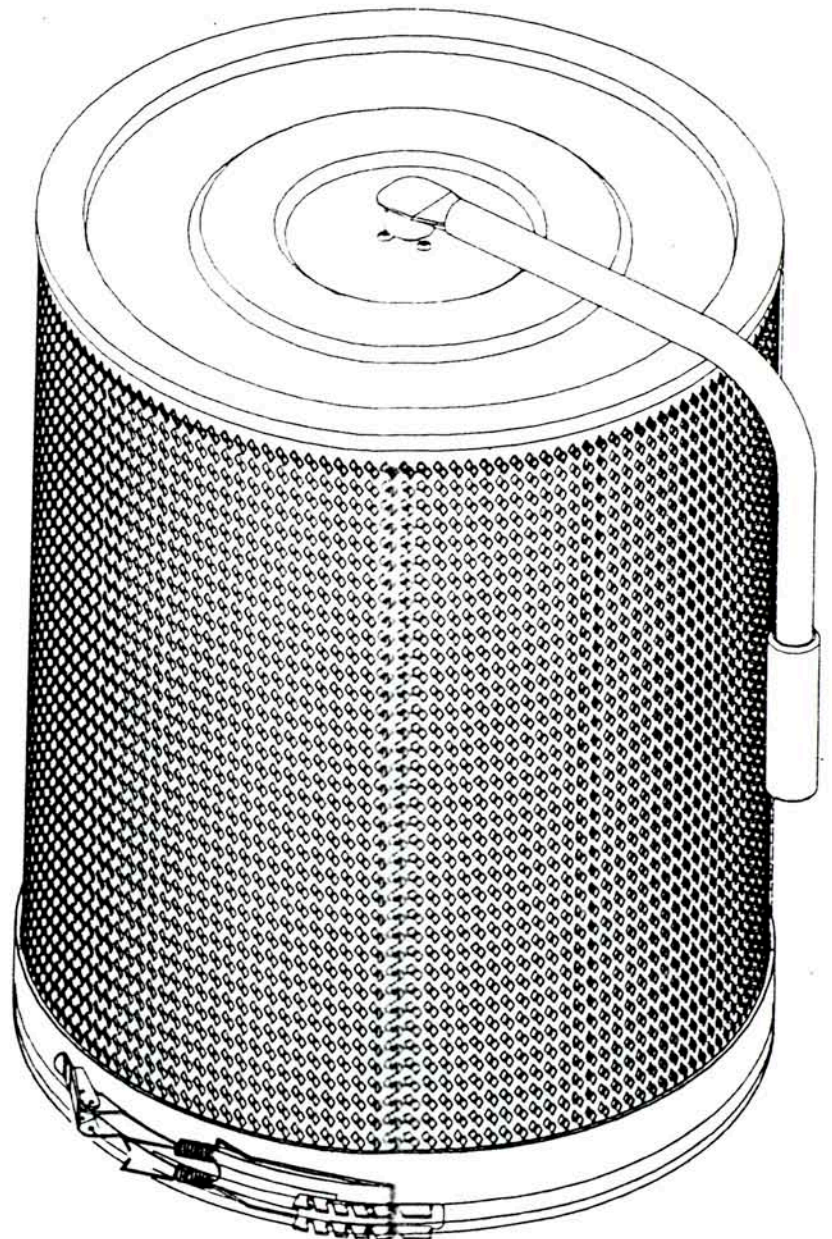
OPERATING MANUAL & PARTS LIST

CT030CH



WARNING :

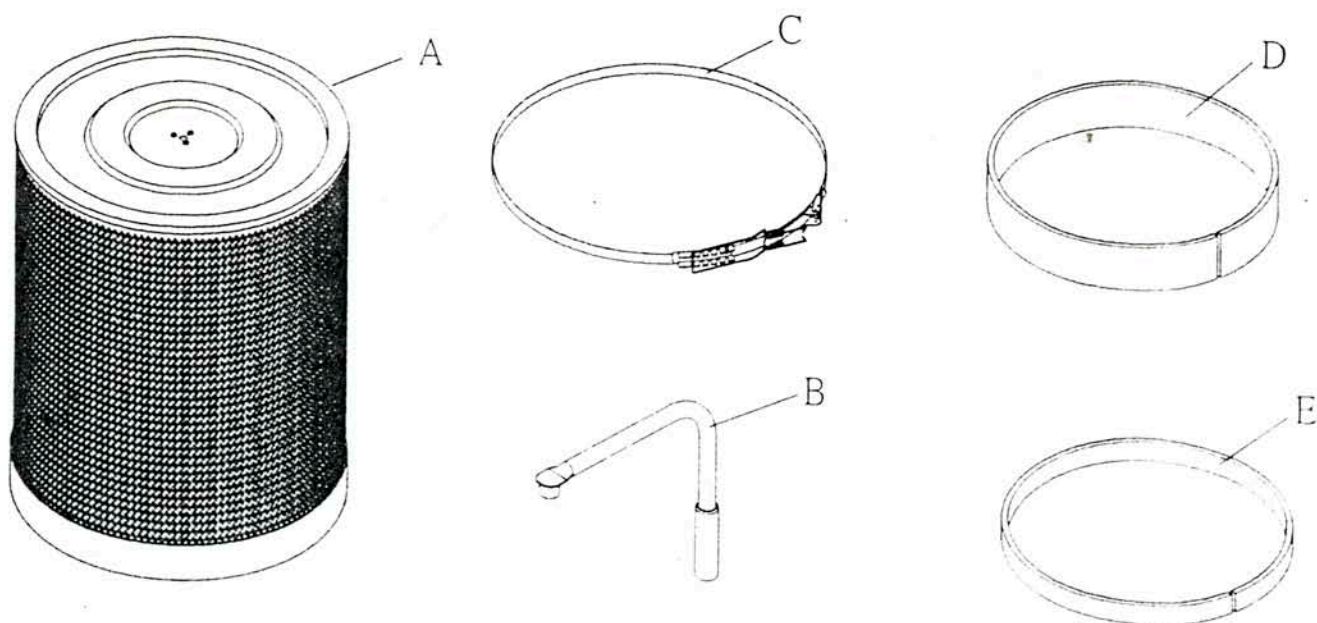
The user must thoroughly read and understand this manual before operating or servicing the dust collector. Care should be taken to follow all safety rules and warning instructions.



READ THIS MANUAL CAREFULLY BEFORE ASSEMBLY, TESTING & OPERATING

UNPACKING CONTENT

Unpack carton; please check the content to see below parts listed:



- A. Canister Filter
- B. Handle
- C. Belt Clamp
- D. Foam 5 x 42 x 1565mm
- E. Foam 6 x 20 x 1530mm

ASSEMBLY STEP

Step 1

Mounting the handle (B) on the top of canister filter (A) by tightening up the hex. head screw M6 x 16 (P/no.:2). Please make sure the screw is locked tightly. Please see figure 1 and 2.

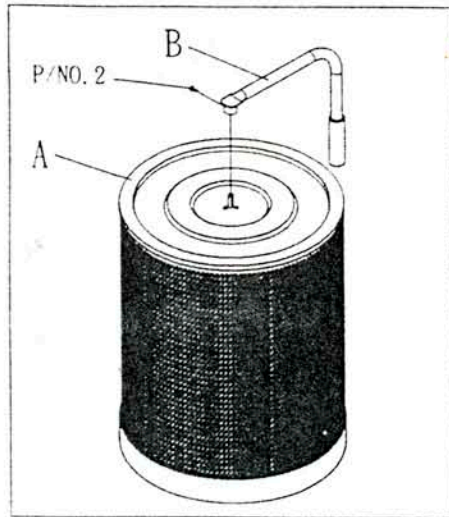


FIG. 1

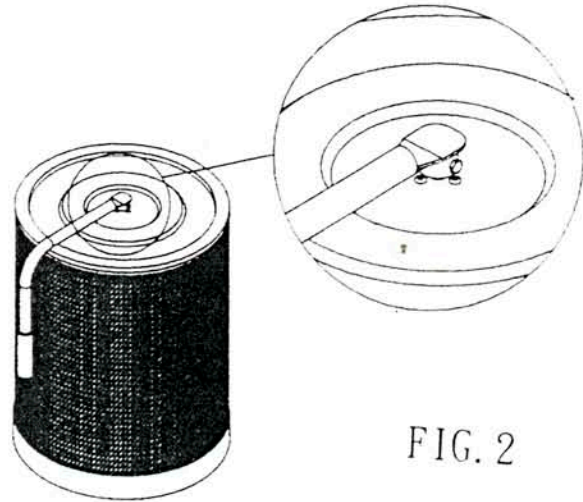


FIG. 2

Step 2

Stick the Foam (D) on the top of collector and stick Foam(E) on the bottom of collector. Please see figure 3.

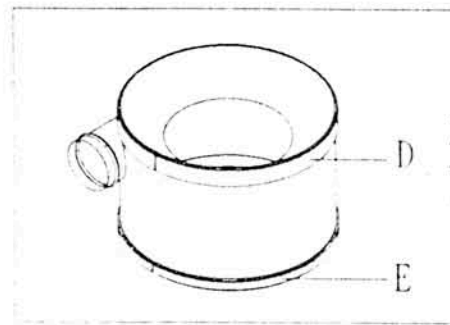
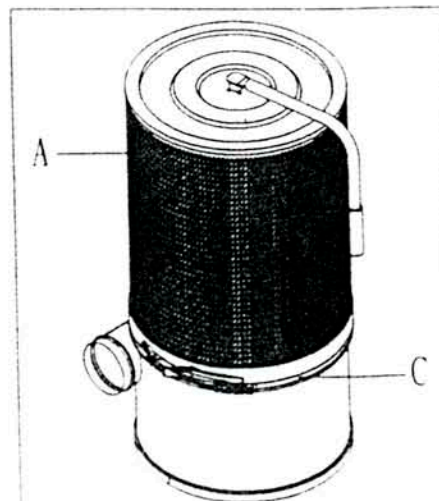


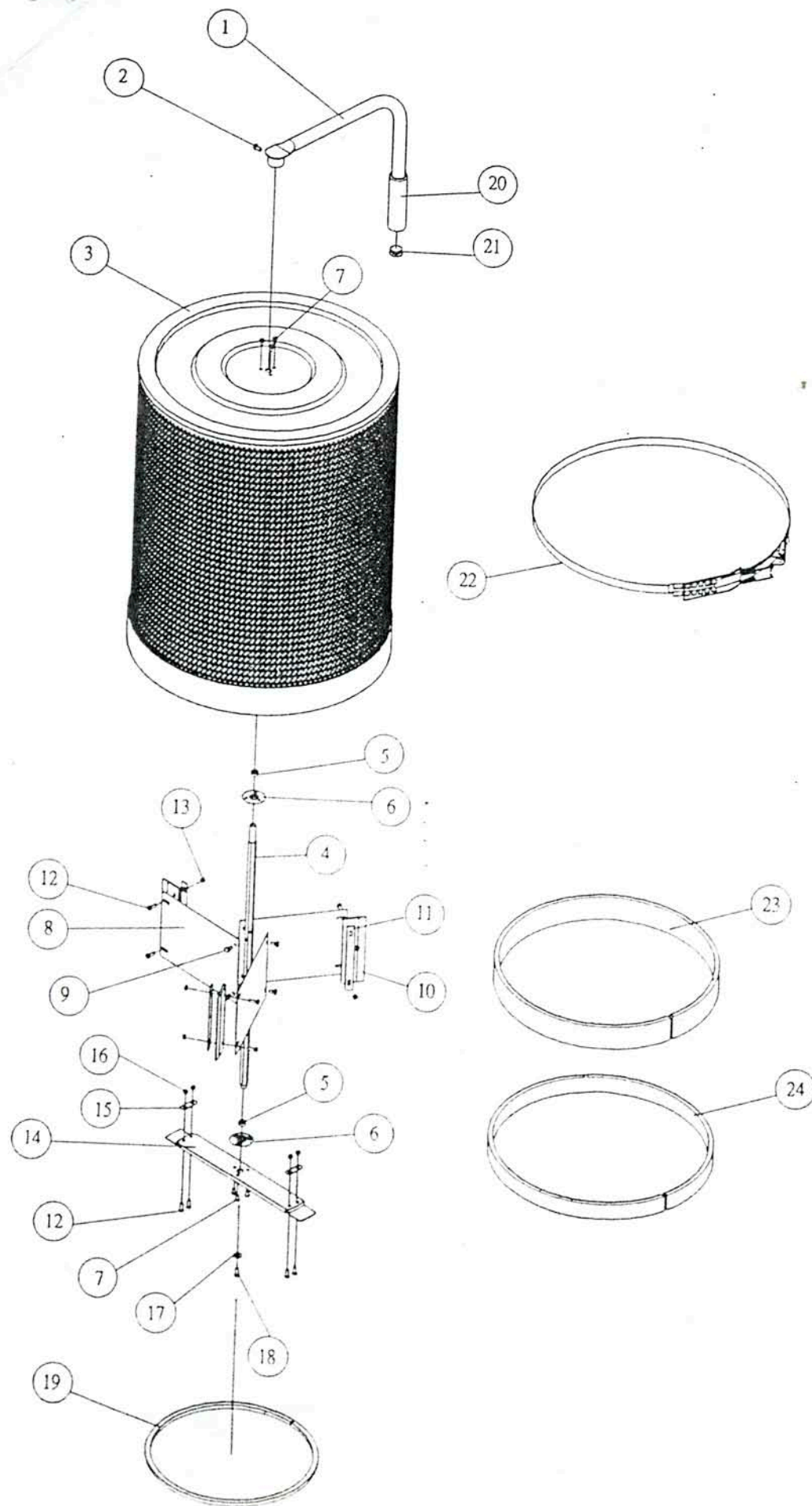
FIG. 3

Step 3

Place the complete Canister Filter (A) on the top area of collector and using a belt clamp (C) to tight it up. Please see the figure 4.



EXPLODED DIAGRAM



PARTS LIST

NO.	Description	Specification	Q'ty
1	Handle		1
2	Hex. Head Screw	M6 x 16	1
3	Canister Filter		1
4	Hex. Spindle		1
5	Thread Bearing		2
6	Bearing Fixing plate		2
7	Half Round Head Screw	M5 x 10	6
8	Clip Board		3
9	Hex. Head Screw	M6 x 10	6
10	Rubber Flapper		3
11	Flapper Fixing Plate		3
12	Round Head Screw	M5 x 15	10
13	Self-lock nut	M5	6
14	Bottom Fixing Plate		1
15	Fixing Plate		2
16	Nut	M5	4
17	Flat Washer	1/4"	1
18	Round Head Screw	M6 x 10	1
19	Sponge	10 x 15	1
20	Sponge Sleeve	1" x 5" x 5"	1
21	Cap	1"	1
22	Belt Clamp		1
23	Foam	6 x 20	1
24	Foam	5 x 42	1

✳

CK500