

K-Mojo

DIGIEXTRACT

USER GUIDE



PLEASE READ THESE INSTRUCTIONS CAREFULLY BEFORE USE

KMIM 10062 08-12-2021 V1 | © 2022 SQ Professional Ltd



Due to sharp parts and potential hazards, this appliance should not be used by children under 16 years old unless supervised by an adult.

Please keep the appliance and mains cable out of the reach of children.

This is not a toy!

If used by persons with reduced physical, sensory or mental capabilities, instruction and supervision must be given to understand the use of the appliance and the hazards involved.

Always disconnect the appliance from the power socket if it is left unattended and before assembling, disassembling or cleaning.

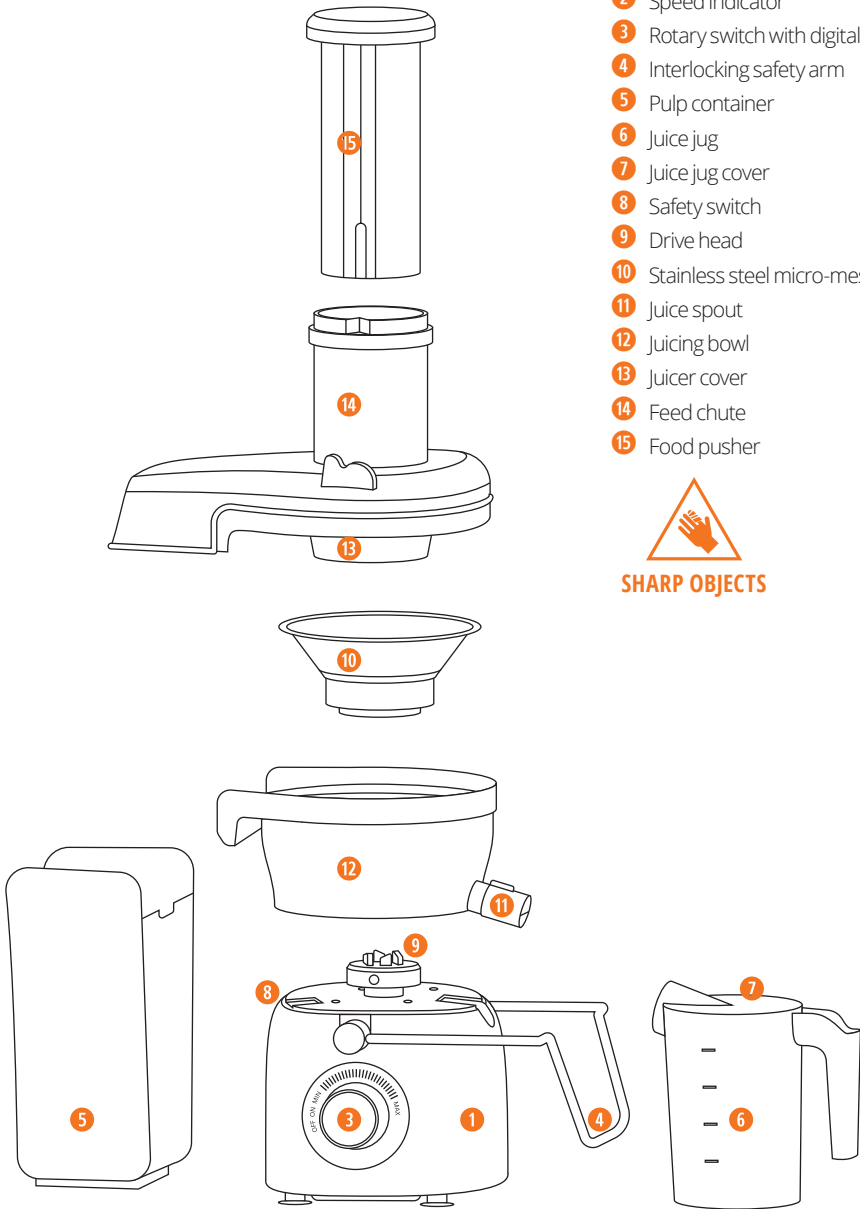
If the mains cable is damaged, it must be replaced by qualified persons in order to avoid any hazards.

FEATURES

- 1 Motor unit
- 2 Speed indicator
- 3 Rotary switch with digital display
- 4 Interlocking safety arm
- 5 Pulp container
- 6 Juice jug
- 7 Juice jug cover
- 8 Safety switch
- 9 Drive head
- 10 Stainless steel micro-mesh filter
- 11 Juice spout
- 12 Juicing bowl
- 13 Juicer cover
- 14 Feed chute
- 15 Food pusher



SHARP OBJECTS



IMPORTANT SAFEGUARDS

Do not use the appliance in a bathroom, near water, or outdoors. Do not operate the appliance with wet hands or bare feet.

Do not immerse any of the parts (appliance, mains cable, plug) in water or other liquids during use to protect from fire, electric shock and personal injury.

Do not use the appliance if it is damaged or malfunctioning.

Do not leave the appliance unattended whilst in use. Use and store it out of reach of children.

Keep hands and utensils away from the moving parts while juicing to reduce the risk of severe injury to persons or damage to the juicer.

- This appliance is intended for household use only.
- Ensure that the appliance is always placed on a firm and flat surface, away from any edges of the worktop. Do not place the appliance onto a metal tray or metal surface whilst in use. Do not place the appliance on, or near, a hot gas or electric burner or in a heated oven.
- Keep the appliance and mains cable away from the edges of worktops and out of reach of children. Route the mains cable so it does not overhang, and cannot be tripped over or caught.
- Do not let the mains cable run across an open space, such as between a low power socket and a table, or across any hot area, such as a cooker. Heat may damage the mains cable.
- The connections on both sides of the mains cable (the appliance and the power socket) should never be strained. If the mains cable is damaged it must be replaced by a qualified person or service to avoid any hazards.
- This appliance must not be operated by an external timer or a remote control system.
- The drive head ⑨ and the micro-mesh filter ⑩ should always be kept dry.
- Before washing and drying, disconnect the power supply; ensure that the drive head ⑨ and the micro-mesh filter ⑩ are completely dry before assembling and before you reconnect the appliance to power supply.
- Before operating the appliance ensure that the juicing bowl ⑫ is in position and the drive head ⑨ has the micro-mesh filter ⑩ securely fitted onto the motor unit ①.
- Only switch the appliance on when the pulp container ⑤ and the juice jug ⑥ are in place and the juicer cover ⑬ is securely locked with the interlocking safety arm ④.
- Do not move the appliance when it is switched on.
- Always clean and cut the ingredients in pieces small enough to fit into the feed chute ⑭.
- Do not open the juicer cover ⑬ or attempt to remove the micro-mesh filter ⑩ while the appliance is running.
- Always use the food pusher ⑮ to push the food down the feed chute ⑭.
- Switch off the juicer and unplug from the power socket before attaching or approaching parts that move while in use. Unplug the juicer when not in use.
- Ensure that the juicer has come to a complete stop before disassembling, cleaning and storing away.
- The juicer will switch off automatically if the interlocking safety arm ④ is released during use.
- Keep the attachments, motor unit ①, mains cable, and plug away from sources of heat. Store in a dry place.
- Use only the parts supplied with the motor unit ① (and vice versa) and do not tamper with the drive head ⑨ in any way.
- Do not use the juicer for any other purpose than its intended use.
- Read all operating instructions before using the appliance.

SAVE THESE INSTRUCTIONS FOR FUTURE REFERENCE .

BEFORE FIRST USE

All parts of the juicer are to be thoroughly cleaned before being used for the first time.

Carefully wash and dry all parts which come into contact with food – juicer cover **13**, food pusher **15**, micro-mesh filter **10**, juicing bowl **12**, pulp container **5** and juice jug **6**.

Wipe the motor unit **1** with a damp cloth and dry immediately with a soft, lint-free cloth. Assemble the appliance, take out the required length of the mains cable and plug it into the power socket.

ASSEMBLY

Exercise extreme care when inserting or removing the micro-mesh filter **10**. It contains small, very sharp teeth and a cutter on its base.

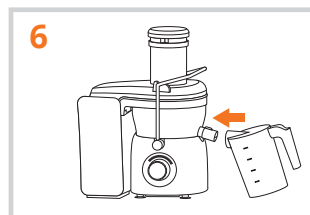
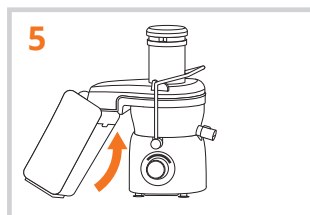
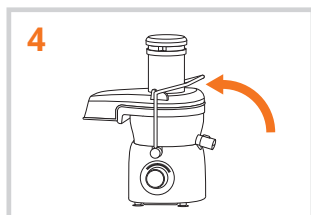
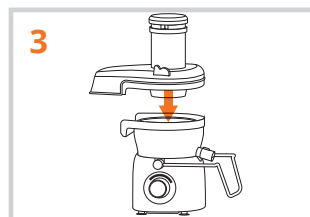
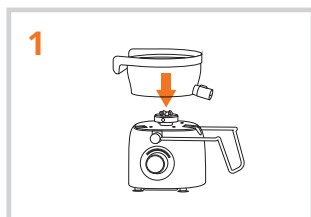
- Place the motor unit **1** on a flat, stable surface and push the interlocking safety arm **4** down. Place the juicing bowl **12** on the motor unit **1** and attach the juice spout **11**. **IMAGE 1**
- Place the micro-mesh filter **10** onto the drive head **9** and press down firmly on the edges until it clicks into place. **IMAGE 2**
- Place the juicer cover **13** on the juicing bowl **12** with the feed chute **14** positioned centrally above the micro-mesh filter **10**.

IMAGE 3

- Raise the interlocking safety arm **4** up and lock it into the grooves on either side of the juicer cover **13**. **IMAGE 4**
- Tilt the pulp container **5** slightly forward and push it upwards under the pulp spout. **IMAGE 5**
- Slide the food pusher **15** into the feed chute **14**.
- Position the juice jug **6** next to the motor unit **1** and align the spout of the juice jug **6** with the juice spout **11**. **IMAGE 6**

DISASSEMBLY

- Turn the rotary switch **3** to **OFF** and unplug the mains cable from the power socket. Ensure that the appliance has come to a complete stop.
- Remove the pulp container **5** by holding it with both hands and pivoting its lower end away from the motor unit **1**.
- Place both hands on either side of the interlocking safety arm **4**, pull back and lift over the grooves on either side of the juicer cover **13**, then lower it.
- Hold the juicing bowl **12** with both hands and lift it off the motor unit **1** with the micro-mesh filter **10** still in place.
- Place the juicing bowl **12** into the sink, remove the juice spout **11** then turn the juicing bowl **12** upside down to remove the micro-mesh filter **10**.



USING THE DIGIEXTRACT

Do not use your fingers or other utensils to push the ingredients down the feed chute 14.

If the rotary switch 3 is not in the OFF position when power is supplied to the appliance, it will not function. Return the rotary switch 3 to the off position before selecting a speed again.

- Wash the ingredients and remove any hard or inedible parts such as stones, pits, hard skin, rind, pith, etc.
- Ensure that the appliance is correctly assembled, the juice jug 6 is placed under the juice spout 11, and pulp container 5 is in position before juicing.
- Plug the mains cable into the power socket (switch the power socket on if applicable).
- Place the ingredients into the feed chute 14 and turn the rotary switch 3 to the 'ON' position. The digital display will illuminate to indicate it is ready to use.
- Turn the rotary switch 3 to the desired speed to begin juicing. The digital display will show the length of time which has elapsed.

MIN Low speed for juicing softer fruit and vegetables such as apricots, berries, cucumber, grapes, kiwis, mangoes, oranges, watermelons, tomatoes, etc.

MAX High speed for juicing harder fruit and vegetables such as apples, pears, carrots, brussels sprout, cabbage, fennel, plums, beetroot, celery, etc.

- Use the food pusher 15 to gently guide the food down the feed chute 14 and extract the maximum amount of juice. The juice will flow into the juice jug 6 and the pulp will separate and accumulate in the pulp container 5.
- Do not allow the pulp container 5 to overflow as this may prevent correct operation or cause damage to the appliance. To empty the pulp container 5 during juicing, turn the rotary switch 3 to OFF and remove it as described in disassembling instructions. Replace the empty pulp container 5 before continuing to juice.
- After juicing, always turn the rotary switch 3 to OFF and unplug the mains cable.

JUICING TIPS

- Always use fresh fruit and vegetables and wash them well before use and storage.
- Add a little lemon juice to apples, pears and similar fruits to prevent browning.
- When juicing herbs, sprouts or leafy vegetables, form them together into a bundle or mix them with softer ingredients and juice on low speed for best extraction.
- Any pulp remaining after juicing should be used promptly to avoid oxidation and loss of nutrients.
- Consider lining the pulp container 5 with a bio-degradable or food-safe bag for easier disposal or consumption of the pulp.

CLEANING

Never immerse the motor unit 1 in any liquids.

- Always ensure that the appliance is disconnected from the mains supply before disassembling, cleaning and storing.
- Wipe the motor unit 1 with a damp cloth and immediately dry with a soft, lint-free cloth.
- Thoroughly clean all the surfaces that come into contact with food during use.
- Immediately after each use, rinse all the removable parts under running water and allow to air dry.
- Soak the micro-mesh filter 10 for about 10 minutes in warm soapy water, then hold it under the running water and use the supplied brush to ensure that all the pulp is removed from the mesh and any openings.

- In the case of dried pulp, soak the micro-mesh filter **10** in warm soapy water then use the brush again. Never soak the micro-mesh in bleach and always treat it with care as it can be easily damaged.
- After disassembling the appliance, thoroughly hand wash all the removable parts with warm soapy water or on the top rack of a dishwasher.

SERVICE

The product is not user-serviceable. If it is not working, read the instructions, check the plug fuse and main fuse/circuit breaker. If it is still not working, consult your retailer.

If that does not solve the problem ring Customer Service – they may be able to offer technical advice. Please have the Model Number to hand, as they will not be able to help you without it.

If you are advised to return the product to us, pack it carefully, include a note with your name, address, day phone number, and description of the problem.

If under a guarantee, say where and when it was purchased and include a valid VAT receipt. Send it to SQ Professional Ltd.

SPECIFICATIONS

Rated Voltage:	AC 220-240V
Frequency:	50/60Hz
Rated Power:	1000W
Juice jug capacity:	1.0L
Pulp container capacity:	1.4L

ELECTRICAL

The product must not be used without the fuse cover fitted.

Should the power cable or the power plug become damaged, arrange for these to be replaced by Customer Service or a qualified person before continuing to use the appliance. The appliance is fitted with a 13A fuse (BS1362) in a 13A plug (BS1363).

GUARANTEE

The guarantee for this product is covered by SQ Professional Limited. Any faults with this product arising through a manufacturer defect will be covered for 1 year from the date of purchase, subject to a valid VAT receipt being presented. This does not include faults or damage caused by misuse of general wear and tear. SQ Professional Ltd will not be held liable for general wear and tear, or eventual damages to persons, animals or objects caused by incorrect installation or deriving from improper, erroneous or unreasonable use.

Please contact customer services on **01992 716 070** or send an e-mail to info@sqprofessional.com, Monday to Friday from 09:30 - 17:30.

This does not affect your statutory rights.

ENVIRONMENTAL

To reduce environmental and health problems due to hazardous substances in electrical and electronic goods, appliances marked with the symbol below must not be disposed of with unsorted municipal waste. Please repair, reuse or recycle appropriately.



K-MOJO

DIGIEXTRACT



Voltage Business Centre, Units 1 - 3
6 Mollison Avenue, Enfield, EN3 7XQ

T: 01992 716 070 E: info@sqprofessional.com

www.sqprofessional.com