

2 IN 1 FOOD PROCESSOR

THIS PRODUCT FEATURES A SAFETY DOUBLE LOCK SYSTEM THAT PREVENTS THE APPLIANCE FROM WORKING IF THE ATTACHMENTS ARE NOT PROPERLY FITTED. SENSORS ARE PRESENT ON THE MOTOR UNIT, ON THE BOTTOM PART OF THE BLENDING JUG/MIXING BOWL AND ON THE RELEVANT LIDS TO ENABLE THIS FEATURE.

How to operate the appliance using the Mixing Bowl

Place the Mixing Bowl on the drive shaft with the handle placed on the right-hand side. Align the triangle on the bottom edge of the Mixing Bowl with the open lock symbol on the motor unit. Turn the mixing bowl clockwise to lock it in place. To work the appliance, the triangle on the bottom edge of the Mixing Bowl must be aligned with the closed lock symbol on the motor unit.



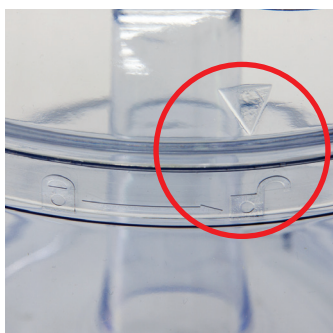
UNLOCKED - NOT OPERATING



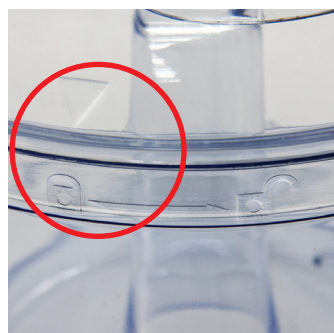
LOCKED - OPERATING

If you are using the Chopping Blade, Mixing Blade or the Blade Disk

Place the relevant attachments as described in the provided Instruction Manual, then place the Mixing Bowl cover onto the Mixing Bowl with the feeder chute placed on the right-hand side. Align the triangle on the edge of the Mixing Bowl cover with the open lock symbol on the upper rim of the Mixing Bowl. Turn the Mixing Bowl cover clockwise until it clicks into place. This will engage the safety interlock present in the handle and ensure that the Mixing Bowl is securely attached, so that the appliance is ready and safe to operate.



UNLOCKED - NOT OPERATING



LOCKED - OPERATING



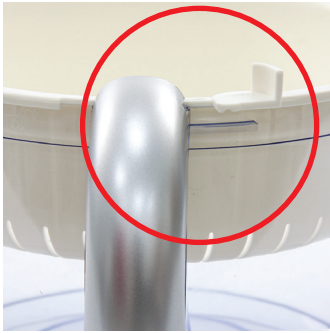
UNLOCKED - NOT OPERATING



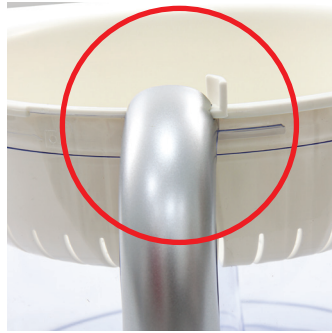
LOCKED - OPERATING

If you are using the Citrus Juicer Basket

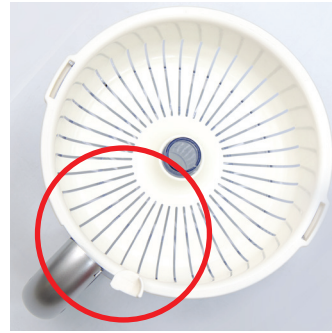
Place the Citrus Juicer Basket on top of the Mixing Bowl and rotate it clock-wise until it clicks into place. This will engage the safety interlocks present in the handle and ensure that the Citrus Juicer Basket is securely attached, making the appliance ready and safe to operate. Insert the juicing cone into the citrus juicer basket and ensure it sits snugly on the drive shaft.



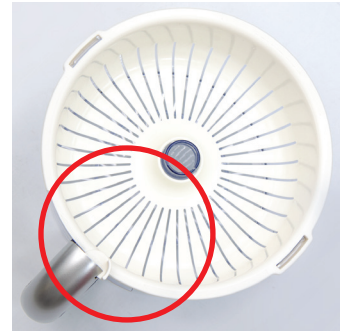
UNLOCKED - NOT OPERATING



LOCKED - OPERATING



UNLOCKED - NOT OPERATING

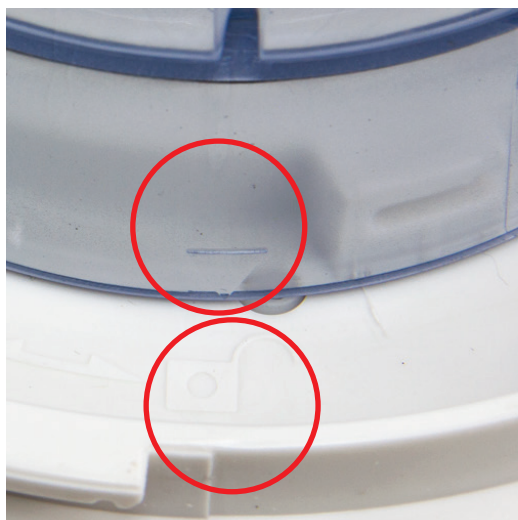


LOCKED - OPERATING



How to operate the appliance using the Blending Jug

Place the Blending Jug on the drive shaft with the handle placed on the right-hand side. Align the triangle on the bottom edge of the mixing bowl with the open lock symbol on the motor unit. Turn the Blending Jug clockwise to lock it in place. To work the appliance, the triangle on the bottom edge of the Blending Jug must be aligned with the closed lock symbol on the motor unit.



UNLOCKED - NOT OPERATING



LOCKED - OPERATING

Place the Blending Jug lid onto the Blending Jug with the long tab placed on the right-hand side. Align the triangle on the edge of the Blending Jug lid with the open lock symbol on the upper rim of the Blending Jug. Turn the Blending Jug lid clockwise until it clicks into place. This will engage the safety interlock present in the handle and ensure that the Blending Jug is securely attached, so that the appliance is ready and safe to operate.



UNLOCKED - NOT OPERATING



LOCKED - OPERATING



UNLOCKED - NOT OPERATING



LOCKED - OPERATING

