

BLITZ

TWIST-N-BLITZ NUTRIENT EXTRACTOR

INSTRUCTION MANUAL



PLEASE READ THESE INSTRUCTIONS CAREFULLY BEFORE USE

Due to sharp parts and potential hazards, this appliance should not be used by children under 16 years old unless supervised by an adult.

Please keep the appliance and mains cable out of the reach of children. This is not a toy!

If used by persons with reduced physical, sensory or mental capabilities, instruction and supervision must be given to understand the use of the appliance and the hazards involved.

Always disconnect the appliance from the power socket if it is left unattended and before assembling, disassembling or cleaning.

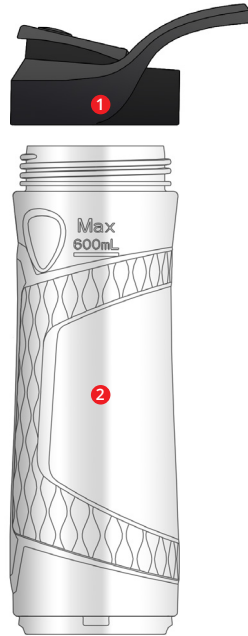
If the mains cable is damaged, it must be replaced by qualified persons in order to avoid any hazards.

FEATURES

- 1 Spill-proof resealable sports-style lid
- 2 Blending bottles 600ml x 2
- 3 Blade assembly
- 4 Motor unit
- 5 One-touch blend button



SHARP BLADES!



IMPORTANT SAFEGUARDS

Do not use the appliance in a bathroom, near water, or outdoors. Do not operate the appliance with wet hands or bare feet.

Do not immerse any of the parts (appliance, mains cable, plug) in water or other liquids during use to protect from fire, electric shock and personal injury.

Do not use the appliance if it is damaged or malfunctioning.

Do not leave the appliance unattended whilst in use. Use and store it out of reach of children.

Do not attempt to remove the blending bottle ② from the appliance while it is running.

Never attempt to fit the blade assembly ③ onto the motor unit ④ without the blending bottle ②.

- This appliance is intended for household use only.
 - Do not use this appliance for any other purpose than its intended use.
 - Ensure that the appliance is always placed on a firm and flat surface, away from any edges of the worktop. Do not place the appliance onto a metal tray or metal surface whilst in use. Do not place the appliance on, or near, a hot gas or electric burner or in a heated oven.
 - Keep the appliance and mains cable away from the edges of worktops and out of reach of children. Route the mains cable so it does not overhang, and cannot be tripped over or caught.
 - Do not let the mains cable run across an open space, such as between a low power socket and a table, or across any hot area, such as a cooker. Heat may damage the mains cable.
 - The connections on both sides of the mains cable (the appliance and the power socket) should never be strained. If the mains cable is damaged it must be replaced by a qualified person or service to avoid any hazards.
- This appliance must not be operated by an external timer or a remote control system.
 - The blade assembly ③ and motor unit ④ should always be kept dry. Before washing and drying disconnect the power supply; ensure that the blade assembly ③ and motor unit ④ are completely dry before you reconnect the appliance to power supply.
 - Ensure that the blade assembly ③ is securely in place and a blending bottle ② is correctly locked onto the motor unit ④ before operating the appliance.
 - Do not switch on the appliance when it is empty. Ensure there is the at least a minimum amount of liquid or solid ingredients in the blending bottle ②.
 - Do not attempt to remove the blending bottle ② from the appliance whilst it is running.
 - Switch off the appliance and unplug from the power socket before changing attachments or approaching parts that move while in use. Unplug the appliance when not in use.
 - Ensure that the appliance has come to a complete stop before cleaning and storing away. Keep the attachments, motor unit ④, mains cable, and plug away from sources of heat. Store in a dry place.
 - Use only the blending bottles ② with the motor unit ④ supplied (and vice versa) and do not tamper with the connector in any way.
 - Read all operating instructions before using the appliance.

SAVE THESE INSTRUCTIONS FOR FUTURE REFERENCE

BEFORE FIRST USE

All parts that come in touch with food are to be thoroughly cleaned before being used for the first time (see section on Cleaning).

Ensure that the rotary switch ⑩ is in the position 0. Take out the required length of the mains cable and plug it into the power socket.

OPERATING INSTRUCTIONS

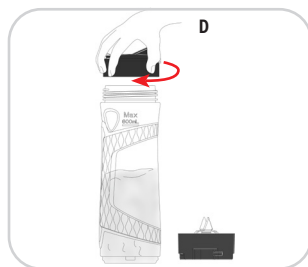
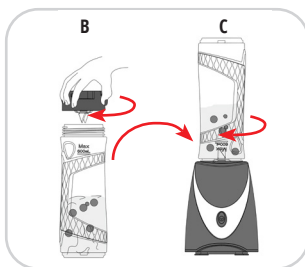
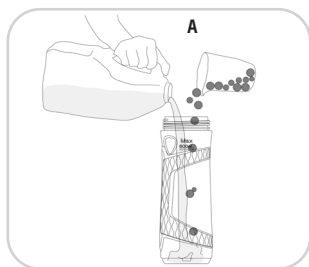
The blades are extremely sharp. Handle carefully!

If using warm liquids or ingredients always ensure that they are cooled down before blending.

- Place one of the blending bottles **2** on a firm flat surface with the open end facing up. Fill the blending bottle **2** with ingredients below the 600ml mark. **IMAGE A**
- Fit the blade assembly **3** onto the blending bottle **2** and tighten firmly. **IMAGE B**
- Turn the blending bottle **2** upside down so that the blade assembly **3** is at the bottom and align the arrow on the blade assembly **3** with the arrow on the rim of

the motor unit **4**. **IMAGE C**

- Twist the blending bottle **2** clock-wise until it locks, then press the one-touch blend button **5** to start the blending process.
- Hold the one-touch blend button **5** until the blending process is finished. Release the one-touch blend button **5** to stop the appliance.
- When blending is finished, and the blades have stopped rotating, twist the blending bottle **2** counter-clockwise to remove it from the motor unit **4**. Unscrew the blade assembly **3**, fit the spill-proof sport-style lid **1** on the blending bottle **2** and your healthy drink is ready to go. **IMAGE D**



USEFUL TIPS

- To achieve the best results when blending solid ingredients, cut them into small pieces before putting them into the blending bottle **2**. Do not exceed the **MAX** mark.
- Ensure that there is always enough liquid, especially if blending solid ingredients.
- In case the blades get stuck during blending process, stop and unplug the appliance, remove the blending bottle **2** from the motor unit **4** and give it a shake. If the blades are still stuck, use a spatula or similar utensil to remove the blockage.

CLEANING

Never immerse the motor unit **4 in water.**

Wipe the motor unit **4** clean with a damp cloth and dry immediately with a soft cloth to avoid scratches and water marks on the surface.

LIGHT CLEANING

- Fill the blending bottle **2** half way with warm soapy water. Fit the blade assembly **3**, and place onto the motor unit **4**. Press and hold the one-touch blend button **5** for 10-20 seconds. Detach the blending bottle **2** and the blade assembly **3** and rinse them under running water then dry with a soft, lint-free cloth.

THOROUGH CLEANING

Be careful when handling the blades as they are very sharp.

- Blending bottles **2**, spill-proof sport-style lids **1** and blade assembly **3** can be washed by hand or in a dishwasher.
- If necessary remove the rubber sealing ring from the blade assembly **3** and rinse it with water. Dry thoroughly.
- Do not use harsh scourers and aggressive or abrasive detergents.

SPECIFICATIONS

Rated Voltage: 220-240V-
Frequency: 50Hz
Rated Power: 250W
Blending bottle capacity: 600ml

ELECTRICAL

The product must not be used without the fuse cover fitted.

Should the power cable or the power plug become damaged, arrange for these to be replaced by Customer Service or a qualified person before continuing to use the appliance. The appliance is fitted with a 3A fuse (BS1362) in a 3A plug (BS1363).

ENVIRONMENTAL

To reduce environmental and health problems due to hazardous substances in electrical and electronic goods, appliances marked with the symbol below must not be disposed of with unsorted municipal waste. Please repair, reuse or recycle appropriately.



SERVICE

The product is not user-serviceable. If it is not working, read the instructions, check the plug fuse and main fuse/circuit breaker. If it is still not working, consult your retailer.

If that does not solve the problem ring Customer Service – they may be able to offer technical advice. Please have the Model Number to hand, as they will not be able to help you without it.

If you are advised to return the product to us, pack it carefully, include a note with your name, address, day phone number, and description of the problem.

If under a guarantee, say where and when it was purchased and include a valid VAT receipt. Send it to SQ Professional Ltd.

GUARANTEE

The guarantee for this product is covered by SQ Professional Limited. Any faults with this product arising through a manufacturer defect will be covered for 1 year from the date of purchase, subject to a valid vat receipt being presented. This does not include faults or damage caused by misuse of general wear and tear. SQ Professional Ltd will not be held liable for general wear and tear, or eventual damages to persons, animals or objects caused by incorrect installation or deriving from improper, erroneous or unreasonable use.

Please contact customer services on 01992 716 070 or send an e-mail to info@sqprofessional.com, Monday to Friday from 09:30 - 17:30.

This does not affect your statutory rights.





SCAN THE QR CODE TO EXPLORE
OUR FULL PRODUCT RANGE.

Voltage Business Centre, Units 1 - 3
6 Mollison Avenue, Enfield, EN3 7XQ
T: 01992 716 070 | F: 01992 700 538

E: info@sqprofessional.com

WWW.SQPROFESSIONAL.COM