



4MP FIXED IR DOME CAMERA



FGSIP-B4DFA-28

KEY FEATURES:

- Metal and plastic housing
- Up to 2592x1520@25fps
- S+265/H.265/H.264
- Min. illumination colour: 0.002Lux@F1.6
- 120dB WDR
- Smart IR, IR Range: 30m
- Support tripwire and perimeter
- Built-in mic, SD card slot, reset button
- Operating conditions: -35° to 65°C, 0~95% RH
- POE, IP67

Starlight Technology

Incorporates FERN360 Starlight technology. When applied in low illuminance environments, FERN360 Starlight technology provides clear colour video. Even in ultra-low light situations, the technology will produce a superior quality video image.

Intelligent Video Analytics (IVA)

Utilising an advanced video algorithm, this FERN360 camera supports intelligent detection, including tripwire and intrusion parameters.

Protection (IP67)

The camera enclosure has passed a series of strict tests in relation to its ability to protect the camera when exposed to dust and water.

Wide Dynamic Range (WDR)

FERN360 adopts advanced Wide Dynamic Range (WDR) technology. This enables clear images even in high-contrast environments with varying light levels.

4MP FIXED IR DOME CAMERA | FGSIP-B4DFA-28

Technical Specifications

Camera

Sensor	1/2.8" CMOS
Signal System	PAL/NTSC
Min. Illumination	Color: 0.002Lux@ (F1.6, ACG ON), B/W: 0 Lux with IR
Shutter Time	1s to 1/100,000s
Day & Night	Dual IR Cut Filter with Auto Switch
Wide Dynamic Range	120dB
Angle Adjustment	pan 0~330°, tilt 0~75°, rotate 0~350°

Lens

Lens Type	Fixed
Focus	2.8mm
Lens Mount	M12
Aperture	F1.6, Fixed
FOV	Horizontal field of view: 93.8°

Illuminator

IR LEDs	8
IR Range	Up to 30m
Wavelength	850nm
White LEDs/Warmlights	N/A

Compression Standard

Video Compression	S+265/H.265/H.264
Video Bit Rate	32Kbps~6Mbps
Audio Compression	G.711/G.711U/ADPCM
Audio Bit Rate	8K~48Kbps

Image

Max. Resolution	2592x1520
Main Stream	PAL: 25fps (2592x1520, 2560x1440, 2304x1296, 1920x1080, 1280x720) NTSC: 25fps (2592x1520, 2560x1440), 30fps (2304x1296, 1920x1080, 1280x720)
Sub Stream	PAL: 25fps (704x576, 704x288, 640x360, 352x288) NTSC: 30fps (704x480, 704x240, 640x360, 352x240)
Third Stream	N/A
Image Setting	Saturation, brightness, contrast, sharpness, adjustable by client software or web browser
Image Enhancement	BLC/3D DNR/HLC

ROI	N/A
OSD	16x16, 32x32, 48x48, adaptable size, Letters such as Week, Date, Time, Total 3 Regions
Picture Overlay	N/A
Privacy Mask	Yes, 4 regions
Smart Defog	Yes

Features

Alarm Trigger	Motion Detection, Mask Alarm, IP Address Conflict
Video Analytics	Tripwire, Perimeter
Early Warning (EW)	N/A

Network

ANR	Yes, auto store video in SD card when NVR disconnected, and upload video to NVR when resumed connection (Only Supports FERN360 ANR NVR)
Protocols	TCP/IP, HTTP, FTP, DHCP, DNS, DDNS, MULTICAST, IPV4, NTP, UDP, Telnet
System Compatibility	ONVIF (PROFILE S/T/G), SDK, P2P(Mutually exclusive with Profile G)
Remote Connection	≤7
Client	Easy7, EasyLive
Web Version	Web5

Interface

Communication Interface	1 RJ45 10M/ 100M self adaptive Ethernet port
Audio I/O	Mic in
Alarm I/O	N/A
Reset Button	Yes
On-board Storage	Built-in MicroSD card slot, up to 512 GB

General

Firmware Version	-
Web Client Language	15 languages English, Russian, Spanish, Korean, Italian, Turkish, Simple Chinese, Traditional Chinese, Thai, French, Polish, Dutch, Hebrew, Arabic, Vietnamese
Operating Conditions	-35°C ~ 65°C , 0 ~ 95% RH
Power Supply	DC 12V±25%, PoE (802.3af)
Power Consumption	MAX: 9.5W (12V) MAX: 10W (PoE)
Protection	IP67, Lightning protection, surge protection and voltage transient protection meets EN 55035:2017
Heater	N/A
Dimensions	Φ132x100mm (Φ5.2x3.94inch)
Weight	0.65Kg (1.43lb)

© 2021 FERN360. All rights reserved. Design and specifications are subject to change without notice. Pictures in the document are for reference only, and the actual product shall prevail.

FERN360 Limited

International Head Office: 8A Triton Drive, Albany, Auckland, New Zealand.
Phone: +64 508 337 6360 (+64 508 FERN360) Email: info@FERN360.com
Website: www.FERN360.com

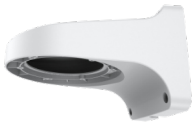


4MP FIXED IR DOME CAMERA | FGSIP-B4DFA-28

Ordering Information

Part Number	Description
FGSIP-BKWM-29	Wall Mount Bracket
FGSIP-BKJB-1	Surface Mount Junction Bracket
FGSIP-BKPM-36	Pole Mount Bracket
FGSIP-BKCM-35	Corner Mount Bracket
FGSIP-BKWM-25	Wall Mount Bracket

Accessories



FGSIP-BKWM-29



FGSIP-BKJB-1



FGSIP-BKPM-36



FGSIP-BKWM-25



FGSIP-BKCM-35

Dimensions

