



## 2MP FIXED IR TURRET CAMERA

## SUPER STARLIGHT



## FGSIP-B2TFSA-28

## KEY FEATURES:

- Super Starlight Camera
- Up to 1920x1080@30fps
- S+265/H.265/H.264
- Min. illumination colour: 0.0008Lux@F1.6
- Smart IR, IR Range: 30m
- Support tripwire and perimeter
- Built-in mic, SD card slot, reset button
- Operating conditions: -35° to 65°C, 0-95% RH
- POE, IP67
- Default: metal and plastic housing

**Super Starlight**

Incorporates the FERN360 highly sensitive star-level sensor, in combination with time and space bilateral noise reduction technology. Provides excellent image quality without trailing, even in illumination conditions as low as 0.0008 lux.

**Intelligent Video Analytics (IVA)**

Utilising an advanced video algorithm, this FERN360 camera supports intelligent detection, including tripwire and intrusion parameters.

**Protection (IP67)**

The camera enclosure has passed a series of strict tests in relation to its ability to protect the camera when exposed to dust and water.

**Wide Dynamic Range (WDR)**

FERN360 adopts advanced Wide Dynamic Range (WDR) technology. This enables clear images even in high-contrast environments with varying light levels.

## Technical Specifications

### Camera

Sensor	1/2.8" CMOS
Signal System	PAL/NTSC
Min. Illumination	Color: 0.0008Lux@ (F1.6, ACG ON), B/W: 0 Lux with IR
Shutter Time	1s to 1/100,000s
Day & Night	Dual IR Cut Filter with Auto Switch
Wide Dynamic Range	Digital WDR
Angle Adjustment	pan 0~340°, tilt 0~75°, rotate 0~360°

### Lens

Lens Type	Fixed
Focus	2.8mm
Lens Mount	M12
Aperture	F1.6, Fixed
FOV	Horizontal field of view: 107°

### Illuminator

IR LEDs	2
IR Range	Up to 30m
Wavelength	850nm
White LEDs/Warmlights	N/A

### Compression Standard

Video Compression	S+265/H.265/H.264
Video Bit Rate	32Kbps~6Mbps
Audio Compression	G.711/G.711U/ADPCM
Audio Bit Rate	8K~48Kbps

### Image

Max. Resolution	1920x1080
Main Stream	PAL: 25fps (1920x1080, 1280x720, 704x576, 640x480) NTSC: 30fps (1920x1080, 1280x720, 704x480, 640x480)
Sub Stream	PAL: 25fps (704x576, 704x288, 640x360, 352x288) NTSC: 30fps (704x480, 704x240, 640x360, 352x240)
Third Stream	N/A
Image Setting	Saturation, brightness, contrast, sharpness, adjustable by client software or web browser
Image Enhancement	BLC/3D DNR/HLC

ROI	N/A
OSD	16x16, 32x32, 48x48, adaptable size, Letters such as Week, Date, Time, Total 3 Regions
Picture Overlay	N/A
Privacy Mask	Yes, 4 regions
Smart Defog	Yes

### Features

Alarm Trigger	Motion Detection, Mask Alarm, IP Address Conflict
Video Analytics	Tripwire, Perimeter
Early Warning (EW)	N/A

### Network

ANR	Yes, auto store video in SD card when NVR disconnected, and upload video to NVR when resumed connection (Only Supports FERN360 ANR NVR)
Protocols	TCP/IP, HTTP, FTP, DHCP, DNS, DDNS, MULTICAST, IPV4, NTP, UDP, Telnet
System Compatibility	ONVIF (PROFILE S/T/G), SDK, P2P(Mutually exclusive with Profile G)
Remote Connection	≤7
Client	Easy7, EasyLive
Web Version	Web5

### Interface

Communication Interface	1 RJ45 10M/ 100M self adaptive Ethernet port
Audio I/O	Mic in
Alarm I/O	N/A
Reset Button	Yes
On-board Storage	Built-in MicroSD card slot, up to 512 GB

### General

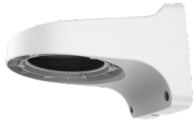
Firmware Version	-
Web Client Language	15 languages English, Russian, Spanish, Korean, Italian, Turkish, Simple Chinese, Traditional Chinese, Thai, French, Polish, Dutch, Hebraism, Arabic, Vietnamese
Operating Conditions	-35°C ~ 65°C , 0 ~ 95% RH
Power Supply	DC 12V±25%, PoE (802.3af)
Power Consumption	MAX: 6W (12V) MAX: 7W (PoE)
Protection	IP67, Lightning protection, surge protection and voltage transient protection meets EN 55035:2017
Heater	N/A
Dimensions	Φ116.6 83.7mm (Φ4.59 3.30inch)
Weight	Metal+Plastic: 0.34Kg (0.75lb) Metal: 0.47Kg (1.04lb)

# 2MP FIXED IR TURRET CAMERA | FGSIP-B2TFS-28

## Ordering Information

Part Number	Description
FGSIP-BKWM-29	Wall Mount Bracket
FGSIP-BKJB-5	Surface Mount Junction Bracket
FGSIP-BKPM-36	Pole Mount Bracket
FGSIP-BKCM-35	Corner Mount Bracket

## Accessories



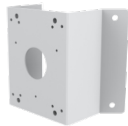
FGSIP-BKWM-29



FGSIP-BKJB-5



FGSIP-BKPM-36



FGSIP-BKCM-35

## Dimensions

