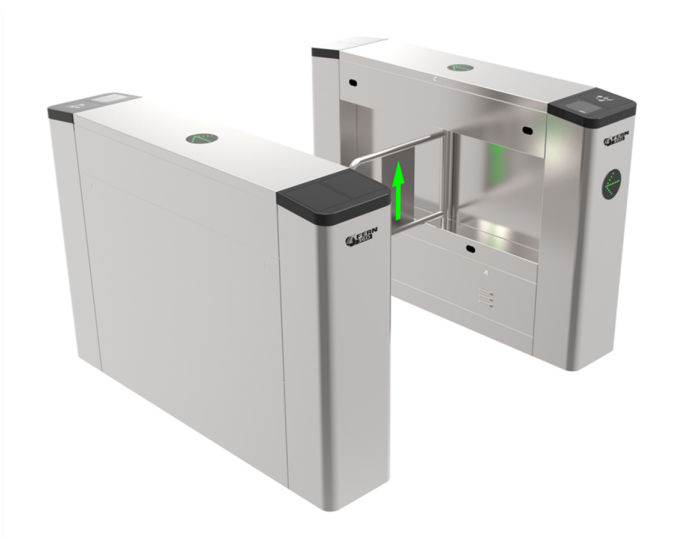


# STAINLESS STEEL SWING BARRIER GATE



## FGES-SWB900-1



### Key Features:

- **Dimensions:** 1400 x 280 x 980mm
- **Material:** 1.2mm, sus304 stainless steel, hairline 400
- **Working voltage:** 100-240V, 50-60Hz
- **Operational voltage:** 24V
- **Driver unit:** brushed motor
- **Passage width:** 900mm
- **Operating speed:** 0.2s
- **Passing speed:** 35-40 people/minute
- **Communication interface:** RS485, dry contact
- **Card reader:** RFID/barcode
- **Working temperature:** -25°C to +70°C
- **Max power consumption:** 35W
- **Photocells:** 4 pairs

### System Overview

With a customer-centred approach, FERN360 aims to provide users with high-quality products. Our swing barrier gate range is developed for high-end users, being intelligent, safe and efficient, high-quality, sturdy and durable. Combining industry experience and expertise over many years, a complete product solution is provided.

Our swing gate security barriers are space-efficient, being compact in design, yet offering sufficient space to integrate any access control system. They can be mounted with a display panel, passage counter, card reader, token-operated traffic lights, command console, and/or alarm system against unauthorised entries. The unique swing-arm feature provides a failsafe solution, enabling egress in cases of power failure or emergency evacuation. Durability combined with minimal maintenance results in years, and millions, of trouble-free passages.

FERN360's swing gate products are designed to enhance security and optimise manpower at your entrance points. Straightforward to install, these systems will provide you with efficient and elegant control of individual access to your premises. Our gates create a secure environment and are used in a wide range of different applications including stadiums and arenas, perimeter and interior security, recreation and amusement parks, retail crowd control, transit fare collection and lobby access control.

### Materials

Housing: metal sheet painted with 20/10, or stainless steel AISI 304  
Barrier gates: plastic plate, toughened glass, stainless steel frame  
Top cover options: stainless steel or artificial stone (black/brown)

### Features and Benefits

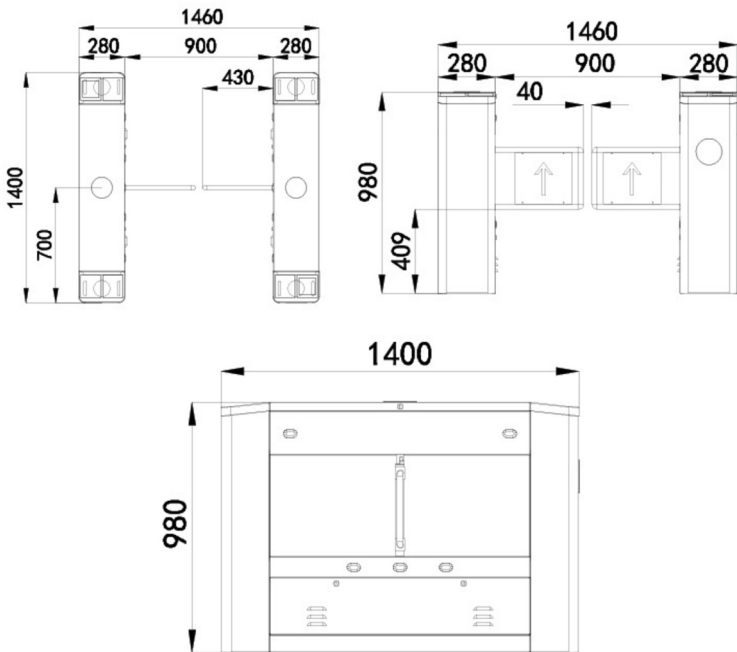
- Integrates with RFID card, barcode or magnetic card-reading technology, allowing interface with ID systems, access control and fee collection solutions
- Direction indicator displays current pedestrian access status, and guides pedestrians for correct and smooth passage
- Displays statistics and numbers
- Voice and strobe-light alerts
- A combination of infrared sensors and monitoring enables smooth pedestrian passage while ensuring prevention of unsolicited entry
- Double anti-clipping function: photocell anti-clipping and mechanical anti-clipping
- Auto reset function: if no passage is identified during card-reading time, the system will reset automatically. Pedestrians are then prohibited to pass until their second identified reading
- The barrier can be set to delay closing between 1-60s after a valid card-reading

### Operating Modes

- Single passage in the set direction
- Bi-directional single passage
- Free passage in the set direction
- Always free or locked



# Stainless Steel Swing Barrier Gate | FGES-SWB900-1



Technical Data		
Technical Data	Unit	FGES-SWB900-1
Passage Width	mm	≤900
Throughput Rate	p/m	35
Power Supply	V/(ac)	100-240
Operational Voltage	V/(dc)	24
Max. Power Consumption	Watt	35
Frequency	Hz	50-60
Protection Level	IP	> 44
Working Temperature	°C	-25 to +70
Dimensions - excluding gates	mm	1400*280*980
Net Weight - including gates	kg	66

Ordering Information	
FGES-SWB900-1R	Right
FGES-SWB900-1M	Middle
FGES-SWB900-1L	Left

## Product Images



© 2020 FERN360. All rights reserved. Design and specifications are subject to change without notice. Pictures in the document are for reference only, and the actual product shall prevail.

### FERN360 Limited

International Head Office: 8A Triton Drive, Albany, Auckland, New Zealand.  
 Phone: +64 508 337 6360 (+64 508 FERN360) Email: info@FERN360.com  
 Website: www.FERN360.com

