

# FULL HEIGHT TURNSTILE



## FGES-RTDFH900-2



### Key Features:

- **Dimensions:** 3360 x 1750 x 2300mm
- **Material:** 1.5mm, sus304 stainless steel, hairline 400
- **Arm turning:** single or bi-direction
- **Working voltage:** 100-240V, 50-60Hz
- **Driver:** solenoid lock and cam
- **Passage width:** 900mm
- **Operating speed:** 0.2s
- **Passing speed:** 25-35 people/minute
- **Communication interface:** RS485, dry contact
- **Card reader:** RFID/barcode/fingerprint
- **Working temperature:** -15°C to +60°C
- **IP rating:** IP65

### System Overview

Virtually eliminating any unauthorised entry to restricted areas, the FERN360 full-height, rotor turnstile is designed to provide unsupervised access control into, and out of, high security facilities.

The rigidly welded, stainless-steel construction offers advanced reliability and vandal resistance, guaranteeing many years of trouble-free operation even in tough environments. The rotor is manufactured in stainless-steel and is available in either four section (90 degree) or three section (120 degree) versions. The use of an electromagnetic drive mechanism ensures smooth and quiet operation, as well as dynamic braking and accurate crossbars positioning.

### Operating Modes

- Single passage in the set direction
- Bi-directional single passage
- Free passage in the set direction
- Always free or locked

### Materials

**Stainless steel:** all external fabricated materials are composed of #304 stainless steel

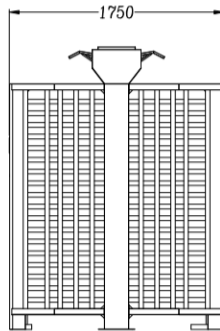
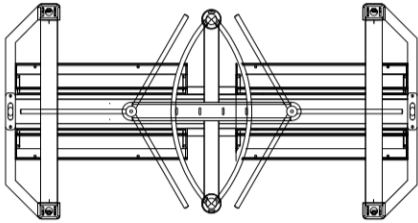
**Powder coated:** the powder is electrostatically applied, then baked to ensure proper curing and adhesion

**Galvanised:** all exterior tubing and sheet metal surfaces receive a coating of hot molten zinc (light, medium, dark black)

### Features and Benefits

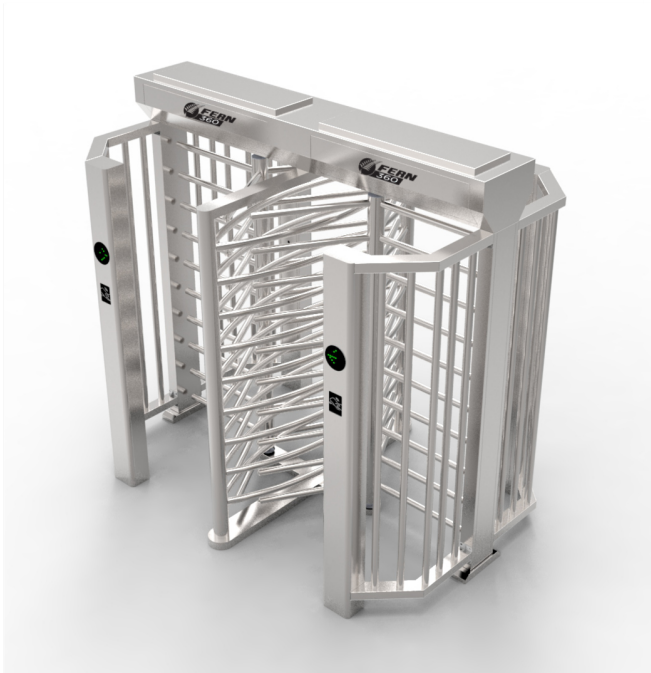
- Bi-directional passage
- Electrical controls for both directions
- Integration with any identification or access control system
- Automatic reset of barrier wings after each passage
- Push button switch override controls for emergency situations
- Cable or wireless remote control
- Indoor and outdoor application
- Heavy-duty high precision mechanism; nickel-plated for high corrosion resistance
- Mechanism designed not to lock at 45°
- Easy access to electronic control modules
- Modular plug-in electronics provides for easy and quick repairs
- Programmable electronic selections e.g. auto relock after a pre-determined time if no action is detected
- Power failure options-unit remains locked or unlocked during power fail mode
- On board counter unit standard; retrievable by handheld module
- Remote mounting of control electronics possible
- A self-centering mechanism to ensure complete rotation of the head to the rest position
- An anti-backup device prevents reverse rotation once the head has moved 30 degrees from its rest position
- A hydraulic damper to ensure smooth quiet operation

# Full Height Turnstile | FGES-RTDFH900-2



Technical Data		
Technical Data	Unit	FGES-RTDFH900-2
Power supply	AC	100V-240V
Control circuit	DC	24V
Power consumption	W	30
Operating temperature range	°C	-15 to +60
Protection level	IP	>44
Humidity		95%
Hydraulic damper		Adjustable
Solenoid		24V DC 100%
Throughput		Person
Signal output		Pulse
Communication interface		RS485 or TCP IP
Passage width	mm	900mm
Frequency	Hz	50 or 60
Electromagnetic drive		DC

## Product Images



© 2020 FERN360. All rights reserved. Design and specifications are subject to change without notice. Pictures in the document are for reference only, and the actual product shall prevail.

### FERN360 Limited

International Head Office: 8A Triton Drive, Albany, Auckland, New Zealand.  
 Phone: +64 508 337 6360 (+64 508 FERN360) Email: info@FERN360.com  
 Website: www.FERN360.com

