

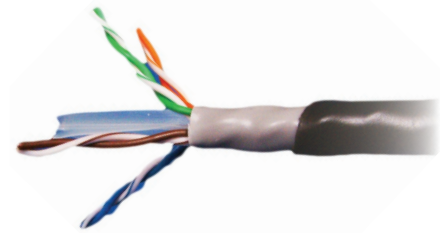
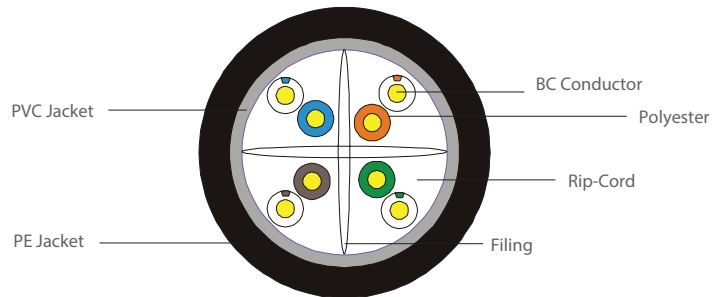
## CAT5e/6 CABLE ROLLS

### CAT5E/6 UNSHIELDED EXTERNAL CABLE ROLL



#### CONFIGURATION:

- Cat5E UTP EXTERNAL Dual Sheath Solid Cable Roll 100MHz, 24 AWGx4P
- Cat6 UTP Horizontal Cable Roll 250MHz, 23 AWGx4P, PVC (Inner Jacket)
- PE black outer jacket
- Supplied on a wooden reel
- NVP: 69%



#### PRODUCT CODES

MODEL CODE	TYPE	LENGTH
C-C5EXDS-SLDBK	CAT5e	305M
C-C6EXDS-SLDBK	CAT6	305M

#### SPECIFICATIONS CAT5e

<b>Category</b>	U/UTP CAT5e-4P-PVC+PE	
<b>Test Standard</b>	ISO/IEC11801, TIA-568-C.2, YD/T1019	
<b>Conductor</b>	Material	SOLID-Bare Copper
	Nom. O.D. (mm) - 0.5	Up: +0.005 Down: -0.005
<b>Insulation</b>	Material	HDPE
	Diameter	0.88± 0.03mm
<b>Colour</b>	A.Blue, White-Blue	B.Orange, White-Orange
	C.Green, White-Green	D.Brown, White-Brown
<b>In Jacket</b>	Material	PVC, Grey Colour
	Thickness	0.50±0.05mm
<b>5. Sheath</b>	Thickness	0.55±0.1mm
	External O.D.	6.3±0.5mm
	Surface	Clean, Frap, Satiation
	Material	LDPE
<b>Surface Printing</b>	Colour	Black
	Letter height	3.0±0.3mm
<b>Packing length</b>	Color	White
		305±1.5m
<b>Out Jacket Physical Properties</b>	Before Aging Tensile Strength (Mpa)	≥10
	Elongation (%)	≥350
	Aging Period (°C×hrs)	100°C×24h×10d
	After Aging	Elongation (%) ≥300
<b>wElectrical Characteristics (20°C)</b>	Cold bend (-20 ±2°C×4h) cracks	No visible
	1.0-100.0MHz, Impedance (Ω)	100±15
	Delay Shew 20°C (ns/100m)	≤45
	NVP	69%
	Capacitance (nF/100m) max:	5.6
	DC Resistance 20°C (Ω/100m) max	9.5
DC Conductor Resistance Unbalance (%) max	5.0	

# CAT5e/6 CABLE ROLLS

## CAT5E/6 UNSHIELDED EXTERNAL CABLE ROLL

### SPECIFICATIONS CAT6

<b>Category</b>	U/UTP CAT6-4P-PVC+PE	
<b>Test Standard</b>	ISO/IEC11801, TIA-568-C.2, YD/T1019	
<b>Conductor</b>	Material	SOLID-Bare Copper
	Nom. O.D. (mm) - 0.5	Up: +0.005 Down: -0.005
<b>Insulation</b>	Material	HDPE
	Diameter	0.98±0.03mm
<b>Colour</b>	A.Blue, White-Blue	B.Orange, White-Orange
	C.Green, White-Green	D.Brown, White-Brown
<b>In Jacket</b>	Material	PVC
	Thickness	0.55±0.05mm
<b>5. Sheath</b>	Thickness	0.6±0.05mm
	External O.D.	7.4±0.5mm
	Surface	Clean, Frap, Satiation
	Material	LDPE
	Colour	Black
<b>Surface Printing</b>	Letter height	3.0±0.3mm
	Color	White
<b>Packing length</b>	305±1.5m	
<b>Out Jacket Physical Properties</b>	Before Aging Tensile Strength (Mpa)	≥10
	Elongation (%)	≥350
	Aging Period (°C×hrs)	100°C×24h×10d
	After Aging	Elongation (%) ≥300
	Cold bend (-20 ±2°C×4h) cracks	No visible
<b>Electrical Characteristics (20°C)</b>	1.0-100.0MHz, Impedance (Ω)	100±15
	Delay Shew 20°C (ns/100m)	≤45
	DC Resistance 20°C (Ω/100m) max	9.5
	DC Conductor Resistance Unbalance (%) max	5.0