

 PERFECTSMILE

PORTABLE WATER FLOSSER

# USER MANUAL

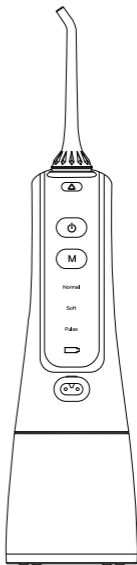




The Perfect Smile Portable Water Flosser uses a pulsating water stream to help remove plaque that has built up in the spaces between your teeth and gums (periodontal pockets).

Unfortunately, toothbrushes alone can't always get to deeply hidden food particles, and dental floss only cleans out so much bad bacteria from the hard-to-reach areas of your mouth.

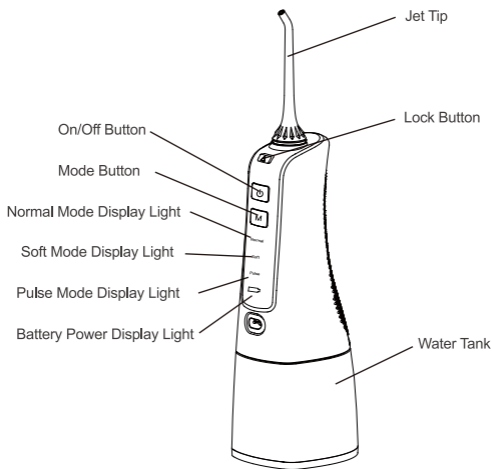
The Perfect Smile Portable Water Flosser effectively power-washes your teeth and gums, leaving you with a clean, healthy and refreshed feeling that lasts all day!



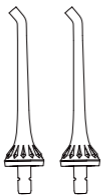
# CONTENTS

Contents	01
Product Descriptions	02
Product Accessories	03
Operating Procedures	03-04
Usage Instructions	05
Recommended Techniques	06
Disassembly	07
Battery Maintenance	08
Safety Tips	09
10-Year Warranty	10-11

## PRODUCT DESCRIPTIONS



## PRODUCT ACCESSORIES

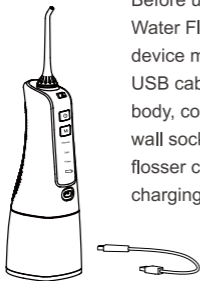


Jet Tips x 2



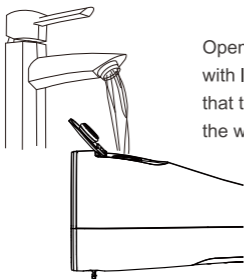
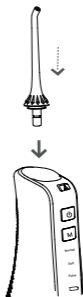
USB Cable

## OPERATING PROCEDURES



Before using the Perfect Smile Portable Water Flosser for the first time, the device must be fully charged. Insert the USB cable into the front of the main body, connect to a plug and secure it in a wall socket. Please note that the water flosser cannot be used while it is charging.

Insert the jet tip into the spray hose by twisting it in until you hear a clicking sound.



Open the water tank lid and fill it with lukewarm water. Make sure that the device is OFF when filling the water tank.

To remove the jet tip, press the lock button down and pull the jet tip out.



## USAGE INSTRUCTIONS

- The Perfect Smile Portable Water Flosser has a memory function. It remembers the last mode you used before being turned off.
- You can switch to a different mode when the water flosser is in use.
- The modes can be changed when the water flosser is off. You can select your preferred mode before turning the device back on.
- After 2 minutes, the water flosser will automatically turn off.
- If the battery indicator flashes red while the water flosser is in use, it means the battery is low and needs to be charged.
- When charging the water flosser, the battery indicator will flash red. The battery indicator will stop flashing and turn green when the battery is fully charged.
- If all three display lights are flashing while the water flosser is in use, this means that the device's power supply is low and needs to be charged.
- The water flosser cannot be used while the battery is charging.



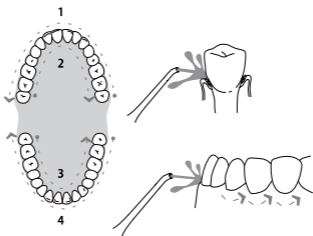
## RECOMMENDED TECHNIQUES

Lean low over the sink and place the jet tip in your mouth. Aim the tip toward your gum line at a 90-degree angle. Turn the water flosser on. Direct the water stream by rotating the jet tip dial at the top of the water flosser's main body.



Close lips slightly to avoid splashing, but allow water to flow freely from your mouth into the sink.

For best results, start with your back molars and work towards the front teeth. Guide the jet tip along the gum line, pausing briefly between each tooth. Continue this process until all areas between the teeth and gums have been cleaned.



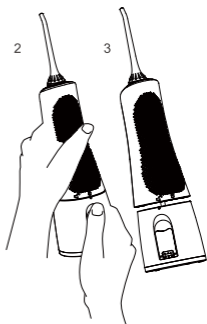


## DISASSEMBLY

Turn the water flosser off and empty the water tank.



In order to remove the water tank (as shown in Diagram 2), use your left hand to hold the main body, and your right hand to hold the water tank. Rotate downwards in a counterclockwise direction at the same time. Please note that when pushing the tank up to be careful with the handle.



## BATTERY MAINTENANCE

- Before initial usage, the water flosser must be fully charged. This takes approximately 4 hours.
- If the water flosser needs to be stored for a long period of time, fully charge the device in advance.
- In order to sustain the life of the battery, please charge the water flosser when the power supply is low.
- The lithium battery inside the water flosser cannot be changed. It can only be charged.

## SAFETY TIPS

- If you are using the Perfect Smile Portable Water Flosser for the first time, it is suggested that you select the SOFT mode for the initial 2 weeks. This will help you adapt to the device. If your gums are bleeding after 2 weeks, it is strongly recommended that you seek professional dental treatment.
- The Perfect Smile Portable Water Flosser should not be used by children, or people with dental implants, oral ulcers or open oral sores.

## 10-YEAR WARRANTY

The Perfect Smile Portable Water Flosser is a high-quality and durable product that will last you for many years. At the same time, we want all of our customers to have peace of mind: if any technical or manufacturing issues arise with your water flosser, we have your back.

That's why we offer a **10-Year Product Warranty** on our water flosser from the date your order leaves our warehouse. We do this for two reasons:

1. To ensure all of our backordered customers do not get penalized for the time that their water flosser is unavailable.
2. This is the last verifiable day we can depend on consistently.

Our goal is to make the entire process as easy and smooth as possible. Here's what you can expect from your warranty:

- All manufacturing defects and technical issues are covered, if your water flosser has stopped functioning.
- You will receive a replacement.
- Unfortunately, CRI Naturals cannot offer free shipping if your water flosser is returned after 90 days. A fee of \$17.99 for shipping and handling covers the cost for a replacement. We apologize for any inconvenience this may cause.

Should ANY issues arise with your Perfect Smile Portable Water Flosser, we have a dedicated, knowledgeable and well-trained support staff that is just a phone call away. In fact, we take great pride in providing you with the best customer service possible.

If you need to reach CRI Naturals with any questions related to the warranty on your water flosser, and prefer speaking with a live person in English, please feel free to call us at:

**1-888-694-0003 (9AM - 9PM EST; Monday - Friday)**

You may also contact us via email:

**[support@crinaturals.com](mailto:support@crinaturals.com)**

CRI Naturals is on a mission to improve our customers' lives with effective, state-of-the-art products. Even though we do strive to make the best products, sometimes issues will arise. We want to ensure you that any problem you encounter will be handled in a timely and efficient manner to your complete satisfaction.

We appreciate your purchase and hope you enjoy all the benefits of your Perfect Smile Portable Water Flosser!

 **PERFECTSMILE**

**PORTABLE WATER FLOSSER**

Thank you for choosing the Perfect Smile  
Portable Water Flosser, the effective and  
efficient method for blasting away plaque  
and brightening your smile!



DISTRIBUTED BY: CRI NATURALS  
11755 WILSHIRE BLVD SUITE 1250  
LOS ANGELES, CA 90025  
888-694-0003  
CRINATURALS.COM



**CRI NATURALS**  
**YOUR BODY'S INNATE**  
**ABILITY TO HEAL ITSELF**