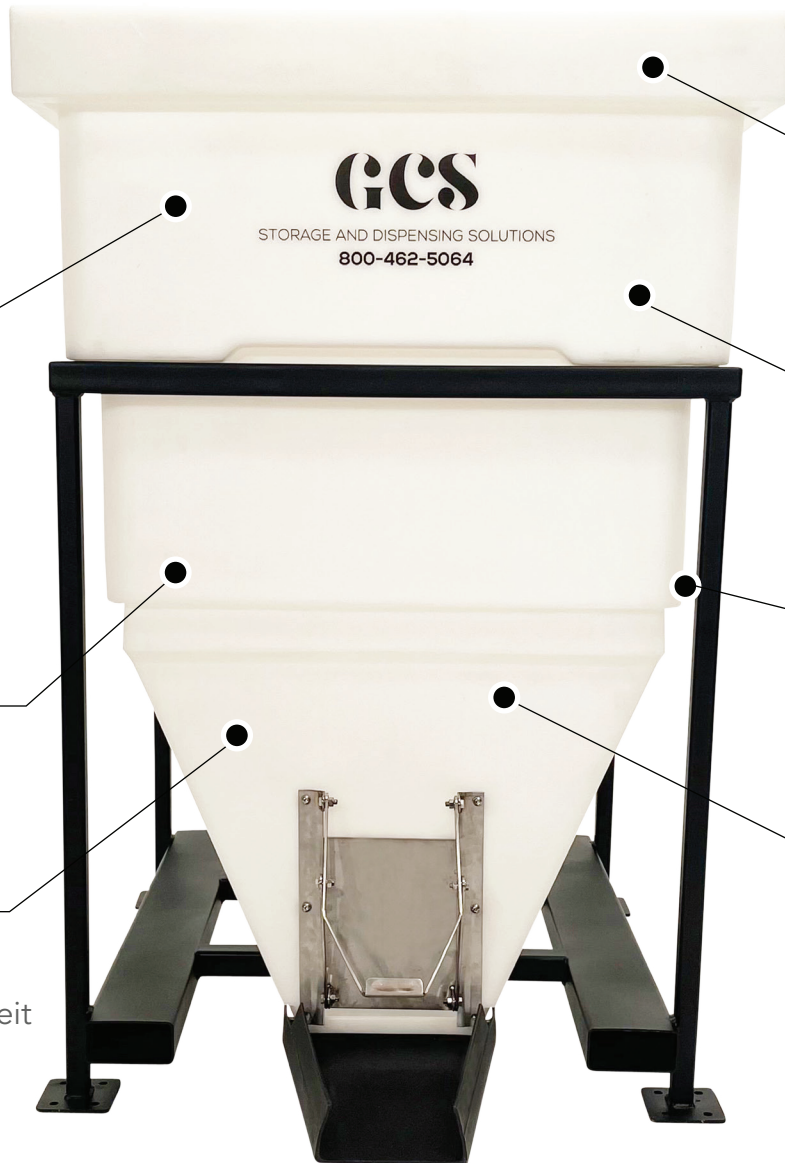




STORAGE AND DISPENSING SOLUTIONS

320 GALLON GCS BIN SELF-DISCHARGING HOPPER BIN



Large Lid

Fully enclosed and removable lid

FDA Approved

FDA approved materials/FSMA compliant

Sturdy

US Steel frames with Food-Grade powder coat

Ease Of Use

Easy to use Stainless Steel and Poly discharge chute

Colors

Available in white poly bin with black powder coated frame or custom colors with quantity of 15 or more.

Translucent

Translucent to see fill levels

Safe For Storage

Safe for outside storage down to -20 degrees fahrenheit

Weight

2600# maximum weight capacity (actual amount varies depending on density of material used)

Food-Grade

Food-Grade poly bin that is BPA-Free

- Expandable capabilities
- Custom Logo Options
- Caster Kits available
- Automated Doors available

GCS Bins
Storage and Dispensing Solutions

www.gcsbins.com | 800-462-5064

320 GALLON GCS BIN

SELF-DISCHARGING HOPPER BIN



STORAGE AND DISPENSING SOLUTIONS



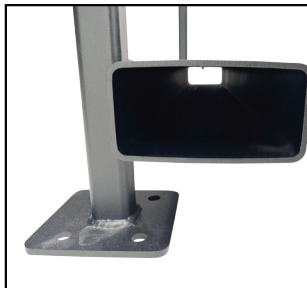
Large lid detail



No forks



Side discharge interior



Fork sleeve detail



Pneumatic Door



Bag Fill Chute



Chute open



Extension with lid

Measurements

- Outside dimension of frame
Front to back 42 7/8" Side to Side 42 7/8"
- Distance from bottom of opening to ground front discharge 2 7/8"
- Tube size of fork pockets 2 3/4" x 5 3/4"
- Outside distance of fork pockets 39 1/4"
- Overall height of bin in frame with lid, with Extension 90 1/2" with lid 88 1/4" with out lid
- Overall height of bin in frame with lid 71" with lid 38 3/4" with out lid
- Handle/Door materials Stainless
- Dimensions of bag fill chute 23 1/2"
- Width of opening on bin 10"
- Space between fork pockets 27 1/2"
- Safe Working Load 2600lbs

Capacities	Cubic Feet	Liquid Gallons	Empty Weight
Side Discharge	43	320	435
Side Discharge w/Extension	66	492	495
Extension	23	172	