



STORAGE AND DISPENSING SOLUTIONS

295 GALLON, AUTOMATED SELF-DISCHARGING HOPPER BIN



Large Lid

Fully enclosed and removable lid

FDA Approved

FDA approved materials/FSMA compliant

Sturdy

US Steel frames with Food-Grade powder coat

Ease Of Use

Easy to use Stainless Steel and Poly discharge chute

Colors

Available in white poly bin with black powder coated frame or custom colors with quantity of 15 or more.

Translucent

Translucent to see fill levels

Safe For Storage

Safe for outside storage down to -20 degrees fahrenheit

Weight

2600# maximum weight capacity (actual amount varies depending on density of material used)

Food-Grade

Food-Grade poly bin that is BPA-Free

- Expandable capabilities
- Custom Logo Options
- Caster Kits available
- Automated Doors available

GCS Bins
Storage and Dispensing Solutions

www.gcsbins.com | 800-462-5064

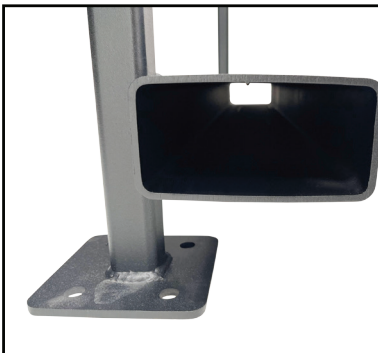
295 GALLON, AUTOMATED SELF-DISCHARGING HOPPER BIN



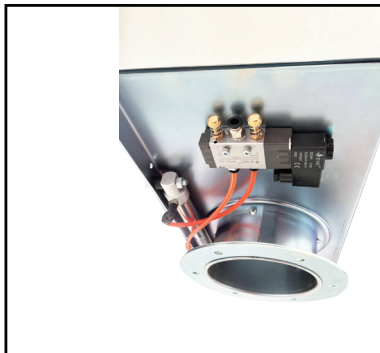
Large lid detail



295 gallon Auto detail



Fork sleeve detail



295 gallon Auto detail

Measurements

- Outside dimension of frame
Front to back 42 7/8" Side to Side 42 7/8"
- Distance from bottom of opening to ground front discharge 23 7/8"
- Width of opening on bin 6"
- Space between fork pockets 27 1/2"
- Overall height of bin in frame with lid 71" with lid 38 3/4" with out lid
- Overall height of bin in frame with lid, Large with Extension 90 1/2" with lid 88 1/4" with out lid
- Outside distance of fork pockets 39 1/4"
- Tube size of fork pockets 2 3/4" x 5 3/4"
- Handle/Door materials Stainless
- Safe Working Load 2600lbs

Capacities	Cubic Feet	Liquid Gallons	Empty Weight
Bottom Discharge	40	297	435
Bottom Discharge, w/Extension	63	469	495
Extension by itself	23	172	