

Riser Swing Check Valve Grooved Ends

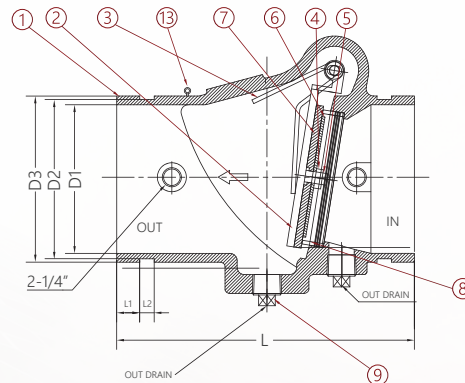
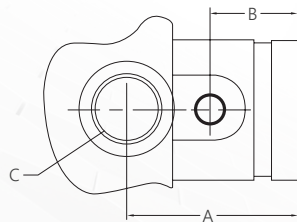


Technical Features

- Connections: Grooved Ends (AWWA C606)
- Sizes: 2", 2-1/2", 3", 4", 6", 8"
- Approvals: UL, ULC, and FM
- Maximum Working Pressure: 300PSI (Max. Test Pressure: 600PSI)
- Maximum Working Temperature: 250°F (120°C)
- Application: Indoor and Outdoor Use
- Low pressure-drop, Non-slam performance



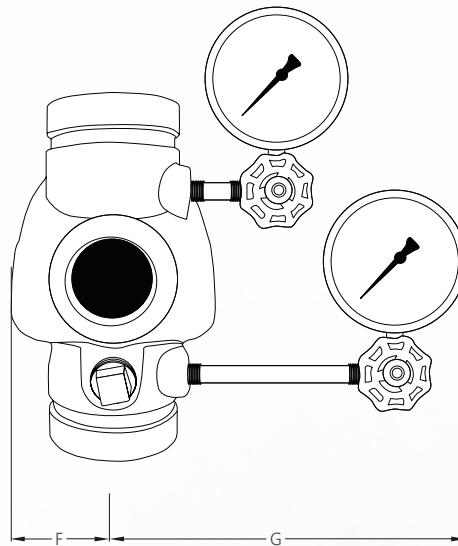
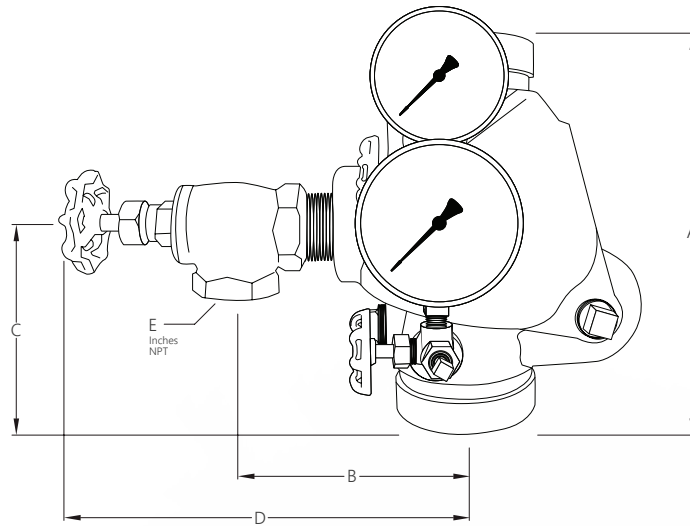
Parts	Components	Material	Specification
1	Body	Ductile Iron	A536 65-45-12
2	Clapper	Stainless Steel	ANSI 304
3	Coil Spring	Stainless Steel	ANSI 302
4	Nut	Stainless Steel	ANSI 304
5	Bolt	Stainless Steel	ANSI 304
6	Washer	Stainless Steel	ANSI 304
7	Facing Seal	Rubber	EPDM
8	Seat Ring	Stainless Steel	ANSI 304
9	Drain Plug	Ductile Iron	A536 65-45-12
10	Pin Plug	Ductile Iron	A536 65-45-12
11	Bushing	AluminumBronze	B148
12	Hinge Pin	Stainless Steel	ANSI 304
13	Hook	Steel	ASTM A307



Dimensions

Size	D1		D2		D3		L		L1		L2		A		B		C		Weight lbs
	in	mm	in	mm	in	mm	in	mm	in	mm	in	mm	in	mm	in	mm	in	mm	
2"	1.9	49.0	2.2	57.1	2.4	60.3	6.7	170.0	0.6	15.8	0.3	8.7	3.7	95.0	1.7	43.0	1.0	25.4	8.0
2-1/2"	2.4	62.2	2.7	69.0	2.9	73.0	7.2	184.0	0.6	15.8	0.3	8.7	3.7	93.0	1.6	41.0	1.3	31.8	8.5
3"	2.9	74.0	3.3	84.7	3.5	89.1	7.7	195.0	0.6	15.8	0.3	8.7	3.8	97.0	1.7	42.0	1.3	31.8	10.5
4"	3.9	98.0	4.3	109.8	4.5	114.3	8.1	205.0	0.6	15.8	0.3	8.7	4.4	113.0	2.0	50.0	2.0	50.8	17.0
6"	6.1	156.0	6.4	163.7	6.6	168.3	12.6	320.0	0.6	15.8	0.3	8.7	5.7	146.0	2.4	60.0	2.0	50.8	42.5
8"	7.9	201.6	8.5	215.8	8.6	218.2	14.6	372.0	0.8	20.1	0.4	10.5	6.9	176.0	2.8	70.0	2.0	50.8	66.5

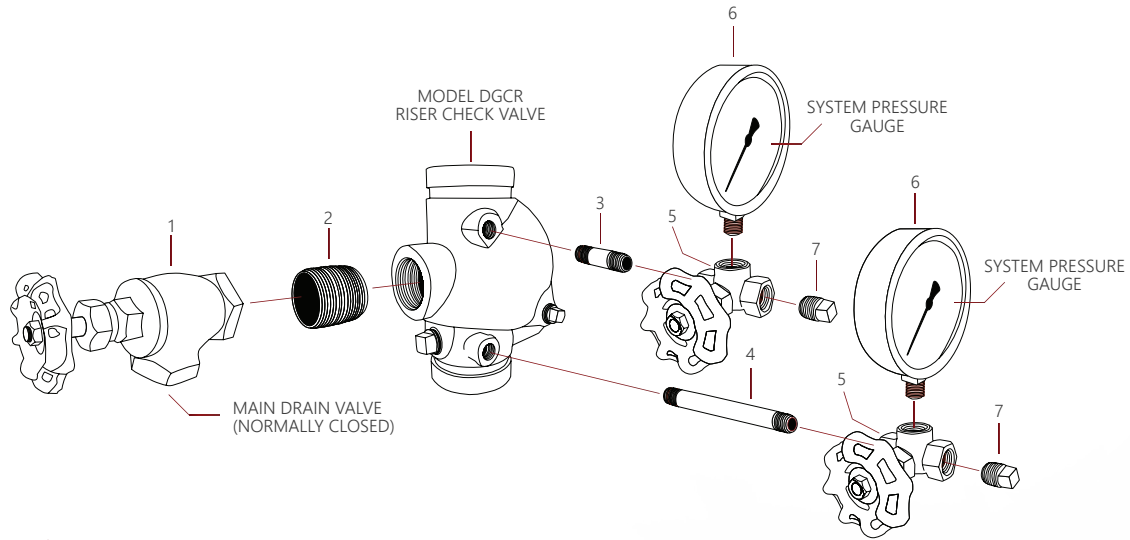
Riser Swing Check Valve Grooved Ends



Dimensions

Size	A		B		C		D		E		F		G	
	in	mm	in	mm	in	mm	in	mm	in	mm	in	mm	in	mm
2"	6.7	170	5.0	127	3.9	99.06	8.7	220.98	1"	NPT	1.75	44.45	7.25	184.15
2-1/2"	7.2	184	5.2	132	3.6	91.44	8.75	222.25	1-1/4"	NPT	1.75	44.45	8.75	222.25
3"	7.7	195	5.4	137	4.0	101.6	9.0	228.6	0.3	NPT	1.5	38.1	8.75	222.25
4"	8.1	205	6.75	171	4.5	114.3	13.4	340.36	2"	NPT	2.75	69.85	8.5	215.9
6"	12.6	320	7.75	197	5.75	146.05	14.5	368.3	2"	NPT	4.0	101.6	9.25	234.95
8"	14.6	372	8.7	221	6.25	158.75	15.0	381	2"	NPT	5.0	127	11.75	298.45

Trim Parts List



2 Inch (DN50)

Trim Kit Part#	Components	Components	Qty
2" STK200a	1	1"AngleValve	1
	2	1" Close Nipple	1
	3	1/4"x1-1/2"Nipple	1
	4	1/4" x5-1/2" Nipple	1
	5	1/4" 3WayValve	2
	6	WaterPressure Gauge 300PSI /2000kOa	2
	7	1/4" Plug	2

2-1/2 Inch (DN65) through 3 Inch (DN80)

Trim Kit Part#	Components	Components	Qty
2-1/2" STK2050	1	1-1/4" AngleValve	1
	2	1-1/4" Close Nipple	1
	3	1/4" x1-1/2" Nipple	1
3" STK300	4	1/4" x5-1/2" Nipple	1
	5	1/4" 3WayValve	2
	6	WaterPressure Gauge 300PSI /2000kOa	2
	7	1/4" Plug	2

4 Inch (DN100) through 12 Inch (DN300)

Trim Kit Part#	Components	Components	Qty
4" STK450	1	2"AngleValve	1
	2	2" Close Nipple	1
6" STK600	3	1/4" x1-1/2" Nipple	1
	4	1/4" x5-1/2" Nipple	1
8" STK800	5	1/4" 3WayValve	2
	6	WaterPressure Gauge 300PSI /2000kOa	2
	7	1/4" Plug	2