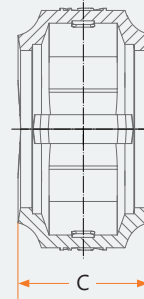
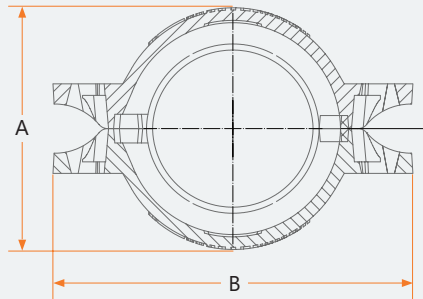
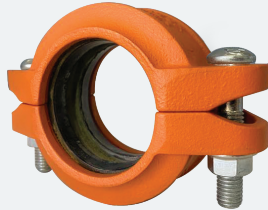


ALREC Reducing Flexible Coupling



- **Model** | ALREC
- **Size** | 2" x 1 1/4" thru 8" x 6"
- **Approvals** | UL, ULC, FM
- **Working Pressure**
 - UL, ULC, FM | 300 PSI / 2.07 Mpa
 - Mechanical | 500 PSI / 3.45 Mpa

- **Housing** | Ductile Iron ASTM A536 Gr. 65-45-12
- **Gasket** | Prelubricated EPDM - ANSI / NSF 61
- **Bolt / Nut** | Carbon Steel heat treated & zinc electroplated, ASTM A183 Gr. 2; Hex Nuts ASTM A563, Gr. B
- **Paint Color** | Orange Enamel, Optional : Red



Reducing Flexible Coupling

Nominal Size		Pipe OD.		Dimensions						Bolt		Pipe Sched	Wall Thick	Max. Work Press	
in	mm	in	mm	A		B		C		Inches	mm	Sch	mm	Bar	Psi
				in	mm	in	mm	in	mm						
2 x 1¼	50 x 32	2.375 x 1.660	60.3 x 42.4	3.39	86	4.93	125	1.74	44	3/8 x 2.1	M10 x 2.2	40	3.56	35	500
												10	2.77	35	500
2 x 1½	50 x 40	2.375 x 1.900	60.3 x 48.3	3.39	86	4.93	125	1.74	44	3/8 x 2.1	M10 x 2.2	40	3.68	35	500
												10	2.77	35	500
2½ x 1	65 x 25	2.875 x 1.327	73.0 x 33.7	3.94	100	5.44	138	1.78	45	3/8 x 2.1	M10 x 2.2	40	3.38	35	500
												10	2.77	35	500
2½ x 1¼	65 x 32	2.875 x 1.660	73.0 x 42.4	3.94	100	5.44	138	1.78	45	3/8 x 2.1	M10 x 2.2	40	3.56	35	500
												10	2.77	35	500
2½ x 1½	65 x 40	2.875 x 1.900	73.0 x 48.3	3.94	100	5.44	138	1.78	45	3/8 x 2.1	M10 x 2.2	40	3.68	35	500
												10	2.77	35	500
2½ x 2	65 x 50	2.375 x 2.375	73.0 x 60.3	3.94	100	5.44	138	1.78	45	3/8 x 2.1	M10 x 2.2	40	3.91	35	500
												10	2.77	35	500
2½ x 1	65 x 25	3.000 x 1.327	76.0 x 33.7	4.02	102	5.51	140	1.78	45	3/8 x 2.1	M10 x 2.2	40	3.38	35	500
												10	2.77	35	500
2½ x 1½	65 x 40	3.000 x 1.900	76.1 x 48.3	4.02	102	5.51	140	1.78	45	3/8 x 2.1	M10 x 2.2	40	3.68	35	500
												10	2.77	35	500
2½ x 2	65 x 50	3.000 x 2.375	76.1 x 60.3	4.02	102	5.51	140	1.78	45	3/8 x 2.1	M10 x 2.2	40	3.91	35	500
												10	2.77	35	500
3 x 1	80 x 25	3.500 x 1.327	88.9 x 33.7	4.53	115	6.61	168	1.81	46	1/2 x 2.7	M12 x 2.7	40	3.38	35	500
												10	2.77	35	500
3 x 1½	80 x 40	3.500 x 1.900	88.9 x 48.3	4.53	115	6.61	168	1.81	46	1/2 x 2.7	M12 x 2.7	40	3.68	35	500
												10	2.77	35	500
3 x 2	80 x 50	3.500 x 2.375	88.9 x 60.3	4.53	115	6.61	168	1.81	46	1/2 x 2.7	M12 x 2.7	40	3.91	35	500
												10	2.77	35	500
3 x 2½	80 x 65	3.500 x 2.875	88.9 x 73.0	4.53	115	6.61	168	1.81	46	1/2 x 2.7	M12 x 2.7	40	5.16	35	500
												10	3.05	35	500
3 x 2½	80 x 65	3.500 x 3.000	88.9 x 76.1	4.53	115	6.61	168	1.81	46	1/2 x 2.7	M12 x 2.7	-	6.35	35	500
												-	5.08	35	500
4 x 1	100 x 25	4.500 x 1.327	114.3 x 33.7	5.67	144	7.8	198	1.97	50	1/2 x 2.7	M12 x 2.7	-	3.81	35	500
												40	3.38	35	500
4 x 1½	100 x 40	4.500 x 1.900	114.3 x 48.3	5.67	144	7.8	198	1.97	50	1/2 x 2.7	M12 x 2.7	40	2.77	35	500
												10	3.68	35	500
4 x 2	100 x 50	4.500 x 2.375	114.3 x 60.3	5.67	144	7.8	198	1.97	50	1/2 x 2.7	M12 x 2.7	40	2.77	35	500
												10	3.91	35	500
4 x 2½	100 x 65	4.500 x 2.875	114.3 x 73.0	5.67	144	7.8	198	1.97	50	1/2 x 2.7	M12 x 2.7	40	5.16	35	500
												10	3.05	35	500
4 x 2½	100 x 65	4.500 x 3.000	114.3 x 76.1	5.67	144	7.8	198	1.97	50	1/2 x 2.7	M12 x 2.7	-	6.35	35	500
												-	5.08	35	500
4 x 3	100 x 80	4.500 x 3.500	114.3 x 88.9	5.67	144	7.8	198	1.97	50	1/2 x 2.7	M12 x 2.7	-	3.81	35	500
												40	5.49	35	500
6 x 3	150 x 80	6.500 x 3.500	165.1 x 88.9	7.87	200	10.24	260	2.01	51	5/8 x 3.3	M16 x 3.3	40	3.05	35	500
												10	5.49	35	500
6 x 4	150 x 100	6.500 x 4.500	165.1 x 114.3	7.97	202.5	10.55	268	2.07	52.5	5/8 x 3.3	M16 x 3.3	40	6.02	35	500
												10	3.05	35	500
8 x 6	200 x 150	8.625 x 6.500	219.1 x 165.1	10.24	260	13.31	338	2.36	60	3/4 x 4.5	M20 x 4.5	-	6.35	31	450
												-	5.08	31	450
8 x 6	200 x 150	8.625 x 6.625	219.1 x 168.3	10.24	260	13.31	338	2.36	60	3/4 x 4.5	M20 x 4.5	40	7.11	31	450
												10	3.4	31	450