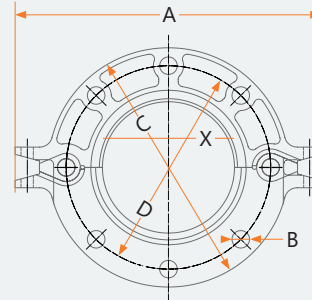
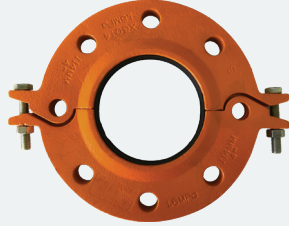


# ALGFPN PN16 Split Flange



- **Model** | ALGFPN
- **Size** | 1 1/2" thru 12"
- **Approvals** | UL, ULC, FM
- **Working Pressure** | 250 PSI / 1.60 Mpa

- **Housing** | Ductile Iron ASTM A536 Gr. 65-45-12
- **Gasket** | EPDM - ANSI / NSF - 61
- **Bolt / Nut** | Carbon Steel heat treated & zinc electroplated, ASTM A183 Gr. 2; Hex Nuts ASTM A563, Gr. B
- **Paint Color** | Orange Enamel, Optional : Red



PN stands for Nominal Pressure and roughly equates to the number of bar. (i.e. the cold working pressure of PN16 is 16 bar = 232 psi)

## Split Flange

| Nominal Size |     | Pipe OD. |       | Dimensions |     |         |       |               |      |                |     |                 |     | Mating Bolt Dia. |     |
|--------------|-----|----------|-------|------------|-----|---------|-------|---------------|------|----------------|-----|-----------------|-----|------------------|-----|
| in           | mm  | in       | mm    | BHC (X)    |     | OAL (A) |       | Bolt Hole (B) |      | Flange O.D (C) |     | Bolt Circle (D) |     | No.              | mm  |
|              |     |          |       | in         | mm  | in      | mm    | in            | mm   | in             | mm  | in              | mm  |                  |     |
| 1½           | 40  | 1.9      | 48.3  | 5.90       | 150 | 7.68    | 195   | 0.73          | 18.5 | 5.90           | 150 | 4.33            | 110 | 4                | M16 |
| 2            | 50  | 2.375    | 60.3  | 6.02       | 165 | 8.66    | 220   | 0.73          | 18.5 | 6.50           | 165 | 4.92            | 125 | 4                | M16 |
| 2½           | 65  | 3        | 76.1  | 6.89       | 185 | 9.25    | 235   | 0.73          | 18.5 | 7.28           | 185 | 5.71            | 145 | 4                | M16 |
| 3            | 80  | 3.5      | 88.9  | 7.48       | 200 | 10.04   | 255   | 0.73          | 18.5 | 7.68           | 195 | 6.30            | 160 | 8                | M16 |
| 4            | 100 | 4.25     | 108   | 8.27       | 220 | 10.98   | 279   | 0.73          | 18.5 | 8.66           | 220 | 7.09            | 180 | 8                | M16 |
| 4            | 100 | 4.5      | 114.3 | 8.27       | 220 | 10.98   | 279   | 0.73          | 18.5 | 8.82           | 224 | 7.09            | 180 | 8                | M16 |
| 5            | 125 | 5.25     | 133   | 8.58       | 250 | 12.28   | 312   | 0.85          | 25   | 9.84           | 250 | 8.27            | 210 | 8                | M16 |
| 5            | 125 | 5.5      | 139.7 | 8.58       | 250 | 12.60   | 320   | 0.91          | 23   | 9.84           | 250 | 8.27            | 210 | 8                | M16 |
| 6            | 150 | 6.25     | 159   | 11.1       | 285 | 13.62   | 346   | 0.85          | 21.5 | 11.00          | 280 | 9.45            | 240 | 8                | M20 |
| 6            | 150 | 6.5      | 165.1 | 11.1       | 285 | 13.62   | 346   | 0.85          | 21.5 | 11.00          | 280 | 9.45            | 240 | 8                | M20 |
| 6            | 150 | 6.625    | 168.3 | 11.1       | 285 | 13.62   | 346   | 0.94          | 24   | 11.00          | 280 | 9.45            | 240 | 8                | M20 |
| 8            | 200 | 8.625    | 219.1 | 13.11      | 340 | 16.32   | 414.3 | 1.18          | 30   | 13.39          | 340 | 11.61           | 295 | 12               | M20 |
| 10           | 250 | 10.75    | 273   | 15.63      | 405 | 18.90   | 480   | 1.00          | 25.5 | 15.94          | 405 | 13.98           | 355 | 12               | M24 |
| 12           | 300 | 12.75    | 323.9 | 18.11      | 460 | 20.88   | 530.5 | 1.00          | 25.5 | 18.11          | 460 | 16.14           | 410 | 12               | M24 |