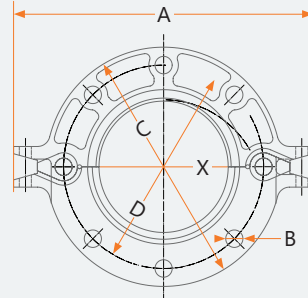
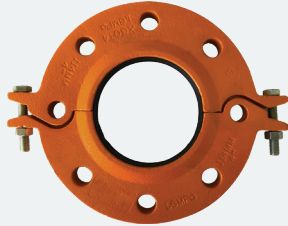


ALGF150 Class 150 Split Flange

- **Model** | ALGF150
- **Size** | 2" thru 12"
- **Approvals** | UL, ULC, FM
- **Working Pressure** | 300 PSI / 2.07 Mpa
- **Housing** | Ductile Iron ASTM A536 Gr. 65-45-12
- **Gasket** | EPDM - ANSI / NSF - 61
- **Bolt / Nut** | Carbon Steel heat treated & zinc electroplated, ASTM A183 Gr. 2; Hex Nuts ASTM A563, Gr. B
- **Paint Color** | Orange Enamel, Optional : Red



Split Flange

Nominal Size		Pipe OD.		Dimensions										Flange Mating Bolt	
in	mm	in	mm	BHC (X)		OAL. (A)		Bolt Hole (B)		Flange O.D (C)		Bolt Circle (D)		No.	Inches mm
				in	mm	in	mm	in	mm	in	mm	in	mm		
2	50	2.375	60.3	6.02	165	8.11	206	0.75	19	5.98	152	4.76	121	4	.563" M16
2½	65	2.875	73.0	6.89	185	9.05	230	0.75	19	7	178	5.51	140	4	.563" M16
3	80	3.5	88.9	7.48	200	9.68	246	0.75	19	7.52	191	5.98	152	4	.563" M16
4	100	4.5	114.3	8.58	220	11.02	280	0.75	19	9	229	7.52	191	8	.563" M16
5	125	5.563	141.3	8.58	250	12.60	320	0.87	22	10	254	8.5	216	8	.750" M20
6	150	6.625	168.3	11.10	285	13.62	346	0.94	24	11	280	9.5	241.3	8	.750" M20
8	200	8.625	219.1	13.11	340	16.31	414.3	1.18	30	13.44	341.4	11.75	298.5	8	.750" M20
10	250	10.75	273	15.63	405	18.94	481.2	1.19	30.3	15.97	405.6	14.25	361.95	12	1.00" M24
12	300	12.75	323.9	18.11	460	21.78	553.3	1.2	30.4	19	482.6	17	431.8	12	1.00" M24