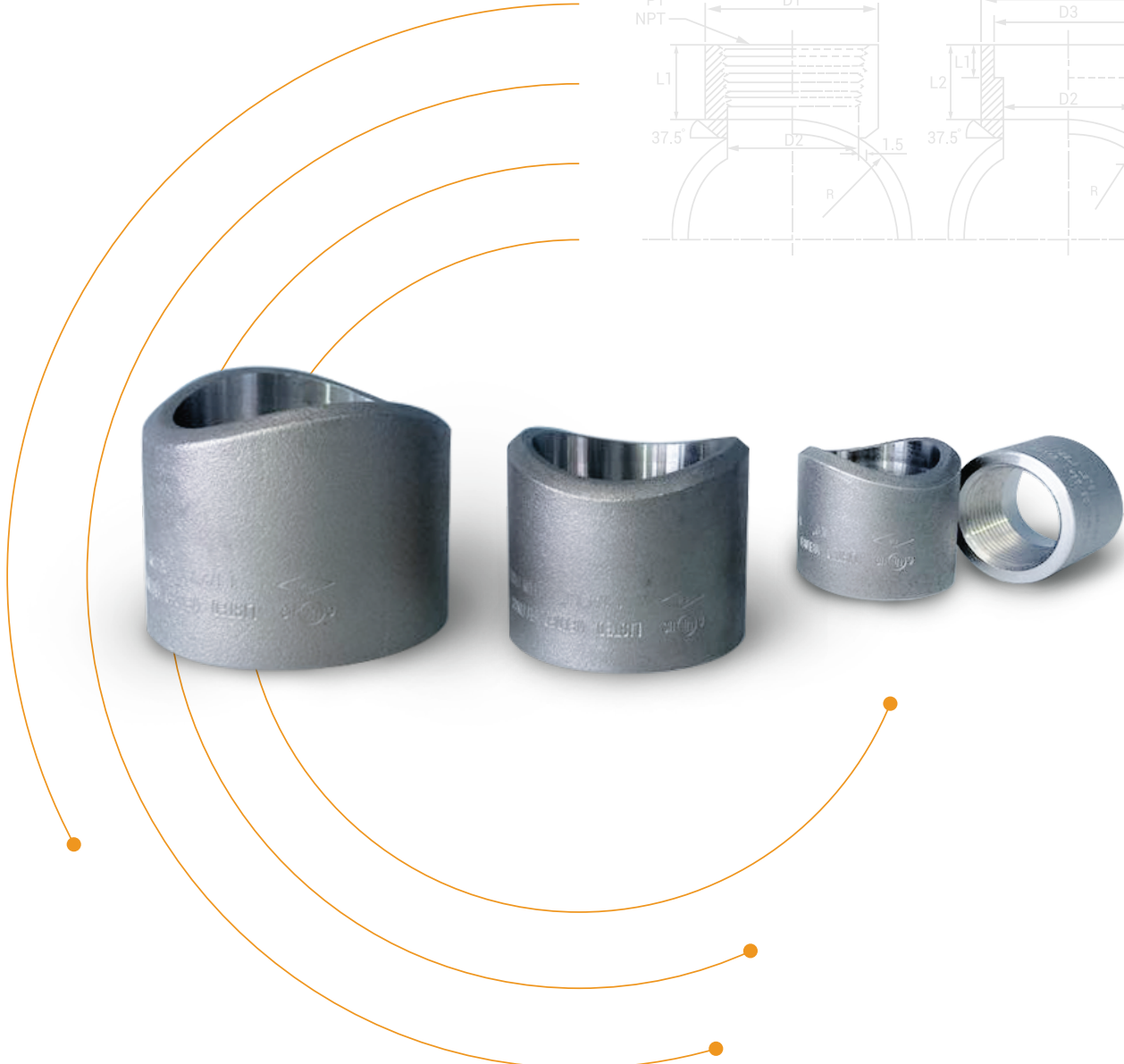
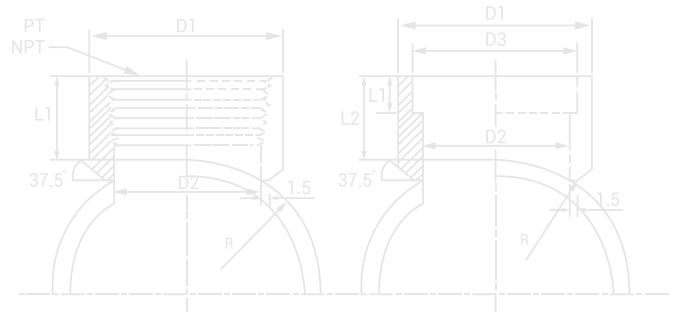


# FIRELET<sup>®</sup>

## FOR FIRE SPRINKLER PIPE FABRICATION

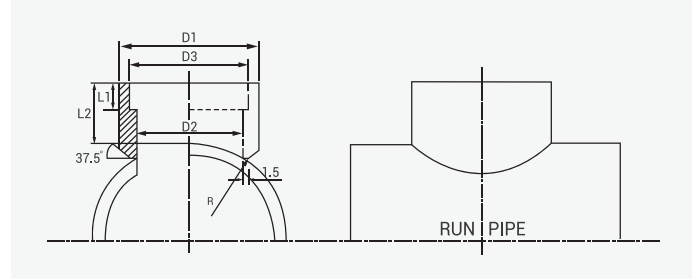
Firelet<sup>®</sup> Female Grooved Outlet



## Female Grooved Outlet



- ✓ Hole size : full inside diameter of outlet size
- ✓ Butt welding ends complying with a national or international standards
- ✓ Application Pipe type : ASTM A53-B | ASTM A106-B



Nominal Outlet		Nominal Header		Length (L2)		Socket Length (L1)		Outside Diameter (D1)		Inside Diameter (D3)		Inside Diameter (D2)
Inch	mm	Inch	mm	Inch	mm	Inch	mm	Inch	mm	Inch	mm	
1/2"	15	1"	25	1.063"	27	0.377"	9.6	1.039"	26.4	1.039"	26.4	CARBON STEEL PIPE 40 I.D.
		1-1/4"	32									
		1-1/2"	40									
		2"	50									
		2-1/2"	65									
		3"	80									
		4"	100									
		5"	125									
6"	150											
8"	200											
3/4"	20	1"	25	1.063"	27	0.5"	12.7	1.251"	31.8	1.251"	31.8	
		1-1/4"	32									
		1-1/2"	40									
		2"	50									
		2-1/2"	65									
		3"	80									
		4"	100									
		5"	125									
6"	150											
8"	200											
1"	25	1-1/4"	32	1.063"	27	0.5"	12.7	1.555"	39.5	1.555"	39.5	
		1-1/2"	40									
		2"	50									
		2-1/2"	65									
		3"	80									
		4"	100									
		5"	125									
		6"	150									
8"	200											
1-1/4"	32	2-1/2"	65	1.375"	35	0.5"	12.7	1.90"	48.3	1.90"	48.3	
		3"	80									
		4"	100									
		5"	125									
		6"	150									
		8"	200									
1-1/2"	40	2"	50	1.625"	41.5	0.5"	12.7	2.145"	54.5	2.145"	54.5	
		2-1/2"	65									
		3"	80									
		4"	100									
		5"	120									
		6"	150									
2"	50	2-1/2"	65	1.75"	44.5	0.625"	15.9	2.61"	66.3	2.61"	66.3	
		3"	80									
		4"	100									
		5"	120									
		6"	150									
		8"	200									
2-1/2"	65	3"	80	2.215"	56	0.625"	15.9	3.228"	82	3.228"	82	
		4"	100									
		5"	125									
		6"	150									
		8"	200									