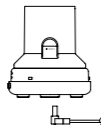


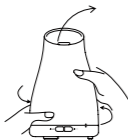
Instructions for *Serene*

Before you connect the power supply to the wall socket follow these steps:

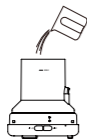
1. Plug the power supply into the base of the diffuser, ensuring the cord is sitting flat.



2. Remove the top of the diffuser by holding the base of the diffuser and gently twist the top cover counter-clockwise, lift upward to detach from the base unit.



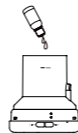
3. Place the base unit of the diffuser on a stable flat surface. Using the measuring cup provided, add up to 100 ml of cold tap water to the level indicated on the side of the water tank.



Do not exceed the water indicated max level when filling the water tank.

Use only cold tap water. Never use warm or hot water.

4. Add a few drops of your favourite pure essential oil or essential oil blend to the water tank.



Use pure essential oils or blends as any other oils may contain impurities that will affect the diffuser operation and nullify any warranty claims for faulty operation

5. Gently place the diffuser cover back on top of the base unit and twist clockwise till the two small black dots on the side of the unit line up, locking the cover in place.



Do not move or open the diffuser during operation.

Once you have completed the above steps, connect the diffuser to the power supply and turn on at the power point. Ensure the diffuser is out of the reach of children and pets.

General Warning: Do not operate the diffuser in any area in the home or office where the diffuser mist may directly contact valuable furniture or electrical devices, e.g. computers, TV, mobile phones, etc.

Mist Operation

To switch on the mist operation, press the “Mist” button.

INTERMITTENT MIST MODE:

Press the “Mist” button once, a **GREEN** light will appear.

The green light indicates the intermittent mist mode, which is approx. 30 seconds On / 30 seconds Off. This mode setting will operate for approximately 7-8 hours.

The diffuser will automatically shut off after this period.

CONTINUOUS MIST MODE:

Press the “Mist” button a second time, a **RED** light will appear.

The red light indicates the continuous mist mode. This mode setting will operate for a approx of 3-4 hours. The diffuser will automatically shut off after this period.

When changing the mist mode, you will hear a single beep.

When the water level is low in the water tank, the unit will immediately switch off, even when the power is connected.

At any time, if you press the mist switch for longer than one second, it will turn off.

NOTE: If the water tank is empty the diffuser will not start and you will hear 3 beeps.

AROMAMIST®

ENRICH YOUR LIFE

Colour changing lights



TB0417

AROMATHERAPY MIST DIFFUSER

Light Operation....

The light operates independently to the mist and may be used together or separately.

MULTI-LIGHT COLOUR MODE: Press the “Light” button once you will hear a single beep.

The LED lights will rotate through their colour cycle, changing from soft tones to bright tones.

SINGLE COLOUR MODE: To choose a single colour, press the light button on the colour of your choice.

To change your choice, press the bottom again cycling through the colours to choose another option.

WHITE COLOUR MODE: Follow the single colour mode instructions until you reach the white colour.

Then choose either the soft warm light or the white night light.

To change from single mode to multi-light mode, you will need to turn off the light.

To turn OFF the light, press and hold the “Light” button, until you hear a beep.

Cleaning & Maintenance....

The diffuser MUST be cleaned at regular intervals to remove impurities and residue to ensure the correct operation of the unit.

1. Turn off the power point and unplug the cord from the base of the unit.
2. Add a 1 teaspoon of Citric Acid to 80ml luke warm water into the water tank and allow to stand for 5 minutes. (Citric Acid is available in leading supermarkets)
3. Empty the luke warm water solution from the Drain Side of the tank.
4. Add 60ml of luke warm water and lightly rinse, taking care not to splash the water.
5. If further cleaning is still required, repeat steps 2-4.
6. Set aside and allow unit to dry before re-using.
7. To clean the top cover of the diffuser, simply rinse it with luke warm water and dry with a soft cloth.

NOTE: Avoid using any cleansing agents with either the top or base unit. NEVER immerse base unit in water.

Precautions

Do not switch on power when the tank is empty.

Do not touch the Ultrasonic vibration plate.

Always unplug from power supply before any maintenance is performed.

Keep away from direct sunlight and heat sources.

Do not tip the Diffuser during operation as it may cause water to enter the mechanism and cause the unit to malfunction.

The amount & intensity of mist produced will vary this is not unusual and should not be considered as a fault. Factors that affect this include water type, humidity, temperature, air currents.

Do not touch any part of the product with wet hands while in use.

Do not fill water tank directly from the tap, always use the measuring cup supplied.

In the event of the unit being knocked over or tipped during use, unplug the Diffuser, remove top cover and pour out any remaining water. Shake gently to drain any remaining water and allow to dry completely before using again.

Warranty

Aromamatic Products Pty Ltd guarantees the Mist Diffuser for a period of one year from the date of purchase if found defective by the manufacturer or their approved agent.

This Guarantee does not include replacement of a unit damaged or broken by internal or external damaged or to external damage to the power adaptor, electrical cable or power plug. Incorrect use of the Mist Diffuser will nullify any warranty claim.

Please return the Mist Diffuser to the place of purchase with your receipt to validate a warranty claim.

www.aromamatic.com.au
Aromamatic Products Pty Ltd
PO Box 840 S.B.C. Southport Qld 4215, Australia

Specifications	Contents
Dimensions: 100mm W x 155mm H	a) Power Supply
Unit Weight: 200gm + Plus Adaptor	b) Diffuser Cover
Power Input: 220/240V AC – 50/60Hz	c) Diffuser Unit Base
Power Output: 12V AC 2.4 MHz 12 Watts	d) Measuring Jug
Tank Capacity: 100mls	