



COMMERCIAL
**ROLLING
BENCH**

PRODUCT GUIDE



WachsenPro.com



WELCOME!

A NEW ERA OF GROWERS



Wachsen Professional manufactures cultivation systems and supplies with your high value and medicinal crops in mind. As the need for high quality hydroponic and horticultural equipment for today's growers arose, Wachsen responded.

They were formed by growers, like you, to fill the growing void created by the increase in hydroponic and soilless production. They now design and engineer solutions in Canada for growers all over the world. Intuitive and easy-to-use, Wachsen products are becoming the go-to choice for commercial and small-scale growers alike.

All Wachsen products are manufactured using industry-leading methods with quality, food-grade materials to keep all crops safe and clean. We know that you need to know that your crops are safe for your customers, and we make sure that you can make that claim. As the high value crop market becomes more competitive, Wachsen Professional continues to design products and systems to meet the demand of today's conscientious growers.

Grow, flourish, repeat...

Wachsen is dedicated to your continued success.

CONTENTS

01	Welcome	01
	Wachsen Quality	02
02	Rolling Bench	03
	Kit System	04
03	Trellis	05
	Trays	06

"We develop and manufacture reliable and durable cultivation equipment and systems for professional growers."

01





WHY PROFESSIONALS OPT FOR WACHSEN PRO

Highly specialized products designed by growers, for growers.



STURDY CONSTRUCTION

Made of food-grade galvanized steel, aluminum T5, stainless steel 204 nylon fiber and heavy duty polypropylene



QUICK ASSEMBLY

All of Wachsen's products have been engineered to assemble and disassemble quickly



RELIABLE SERVICE

With no minimum order requirements and a ready-to-ship inventory



LIMITED LIFETIME WARRANTY

Lifetime warranty on all polypropylene and nylon fiber parts.
2 year warranty on metallic structure and trellis supports.



EASE OF USE

Designed with ergonomic principles and practical engineering



SANITARY

Manufactured so that water cannot stagnate or infiltrate anywhere



QUALITY ASSURANCE

We manufacture our products to GMP standards.

Hydrotek Hydroponics designs and manufactures a range of professional agricultural and horticultural production equipment under the brand name "Wachsen Professional" utilizing certified Good Manufacturing Practices (GMP) principles. All Wachsen Professional products are suitable for use in accordance with their intended design and will not expose a user to risk that jeopardizes their safety or the quality and effectiveness of the product, when used as intended.



THE ULTIMATE ROLLING BENCH FOR PROFESSIONALS



Modular, easily assembled and designed to last, Wachsen's new rolling benches are here to raise the industry's standards.

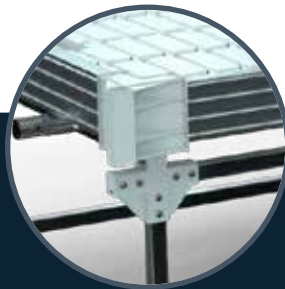


COMMERCIAL GRADE QUALITY



CONTROL WHEEL

Up to 10 inches of travel span on either side



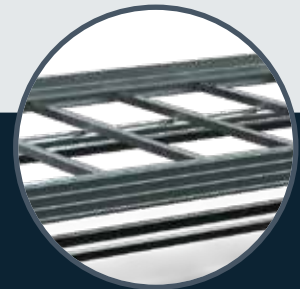
REINFORCED CORNERS

Food-grade, heavy duty polypropylene



TILT-PROOF DESIGN

U-bracket design and lockable, reinforced anchorable feet with adjustable height



EXTRUDED BORDERS

Sturdy T5 aluminum

Wachsen rolling benches are designed with the needs of the professional grower in mind. These built-to-last, modular rolling benches are customizable to fit easily into any sized grow room. Each bench is extendable and can accommodate various add-ons to make them uniquely, and seamlessly fit into your operation. Like all of Wachsen's professional

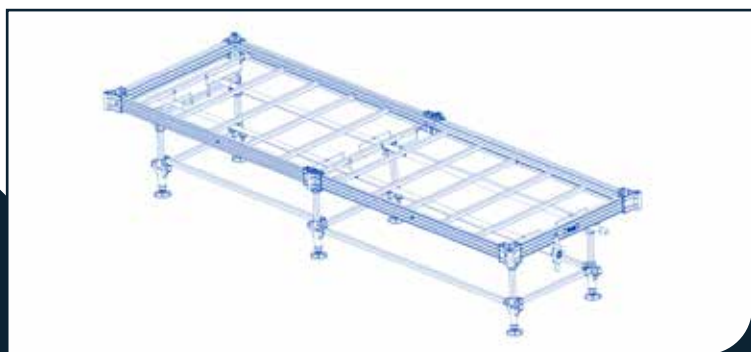
products, these one-of-a-kind rolling benches are engineered to make your growing operation more efficient. These benches help you to more profitably utilize your available square footage. They are easily installed and maintained, helping to keep labor costs down, because we know that your time is just as valuable as your crops.



THE RIGHT SIZE

DESIGNED FOR YOUR GROWING ENVIRONMENT

Rolling benches come in 4 ft. or 5 ft. widths, and are ideal for any indoor grow room and greenhouse setups. Each bench is extendable by combining a single Kit B section with as many Kit A sections needed to accommodate the desired fully assembled length.



KIT A



KIT B

SPECIFICATIONS

Lateral displacement	4': 8" and 5': 10" on each side
Load capacity	20 lbs / sq. ft.
Materials	<ul style="list-style-type: none"> • Wheel, connectors & clips: Food-grade polypropylene • Feet: Nylon fiber • Structure: Galvanized steel 204 • Trellis supports: Galvanized steel • Sides & rolling tubes: Aluminum T5
Food grade	Yes
Maximum length suggested	Up to 60 ft.
Ideal inclination for irrigation	1/4" per 50' - leveling capacity of 2"
Ground anchoring	Strongly recommended
Weight	4' - A: 56.2 lbs 4' - B: 75 lbs 5' - A: 59.5 lbs 5' - B: 79.4 lbs
Dimensions (4 ft. wide bench)	Kit A: 4' x 6.8' Kit B: 4' x 7.1'
Dimensions (5 ft. wide bench)	Kit A: 5' x 6.8' Kit B: 5' x 7.1'
Warranty	<ul style="list-style-type: none"> • Plastic: Lifetime warranty • Metallic structure: 2 years

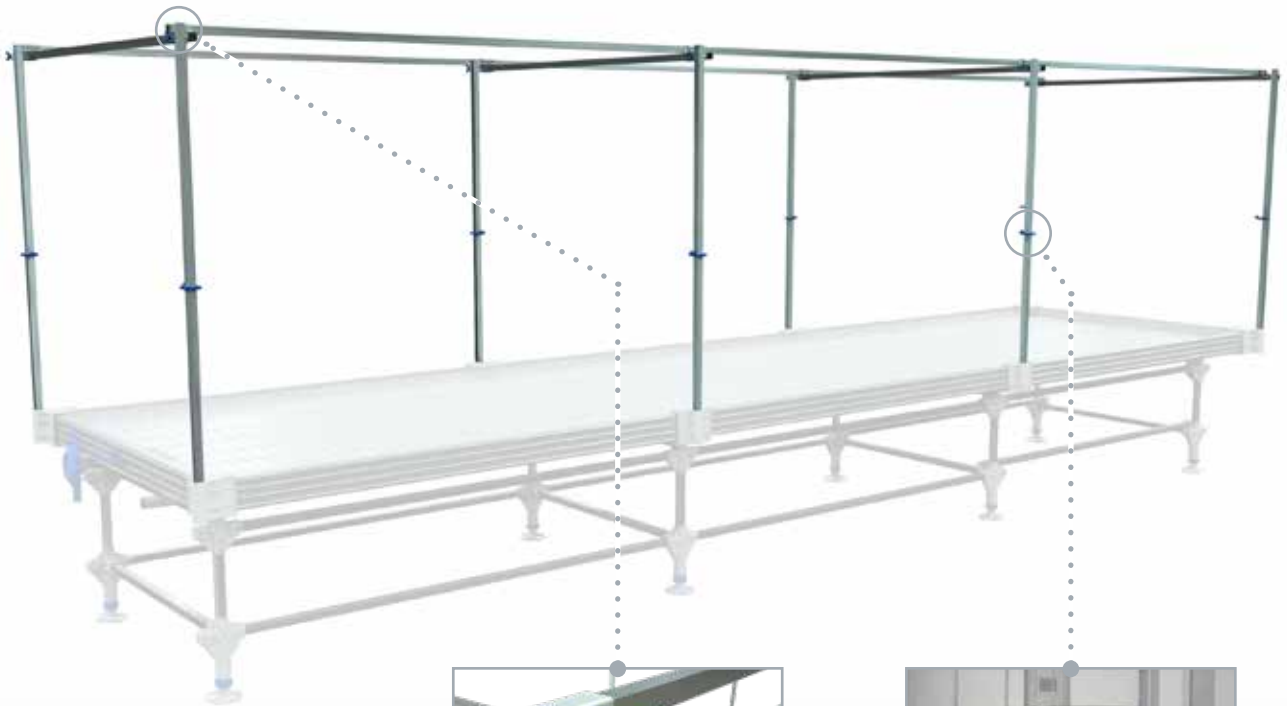
03



OPTIONAL

FULLY ADJUSTABLE TRELLIS

Use Wachsen trellis supports in combination with your rolling benches to direct the growth of your plants and support the weight of their branches and buds.



**CUSTOMIZABLE
HEIGHT & WIDTH**



**TRELLIS &
TRELLIS SUPPORTS**

Available Separately



OPTIONAL*

MODULAR TRAYS

Our Wachsen Pro ABS trays are designed to fit on any of our rolling benches. Available in a range of sizes and drainage options, these trays can be readily incorporated into your growing operation, helping you to keep your crops organized and to make sanitation a breeze.



ABS Plastic Trays



EASIEST ASSEMBLY ON THE MARKET

Wachsen rolling benches can be assembled more quickly and with more ease than those of our competitors. With a handful of common tools, and no specialized labor required, they can be out of the box and in use in little time. Reduce the cost per square foot of your operation with these extremely user-friendly benches.

Grow, flourish, repeat...

Wachsen sets the stage for professional growers to achieve efficiency.



WACHSEN[™]
PROFESSIONAL



WachsenPro.com



12300 rue de l'Avenir
Mirabel, QC J7J 2K4
Canada



Unit 107-19110 24th Ave.
Surrey, BC V3S 3S9
Canada



2060 S. 16th Street, Suite 117
Phoenix, AZ, 85034
United States of America

CONTACT

1 (877) 777-0767
info@wachsenpro.com