

Mech-Eye PRO Industrial 3D Camera



- High accuracy
- High-speed structured light
- Blue & white light options
- For medium-range applications



Fast scanning speed



Flexible installation



IP65 water and dust proof



Competitive price



Universal interface

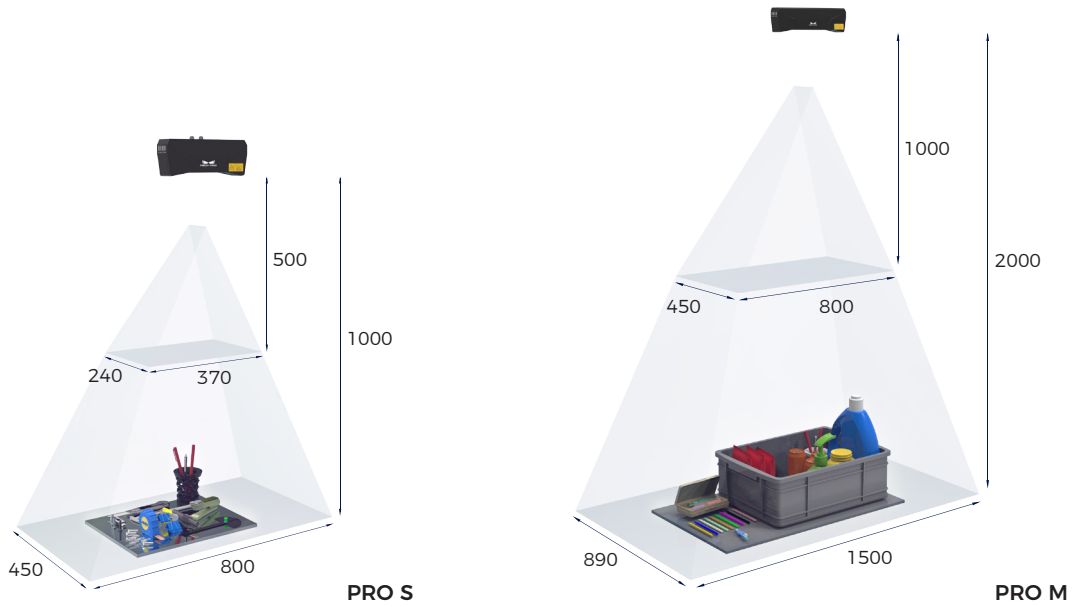
Specification

	PRO S	PRO M
Optimal Scanning Range (mm) :	500 - 1000	1000 - 2000
Near FOV (mm) :	370 × 240 @ 0.5 m	800 × 450 @ 1.0 m
Far FOV (mm) :	800 × 450 @ 1.0 m	1500 × 890 @ 2.0 m
Depth Resolution:	1920 × 1200	1920 × 1200
Megapixels (MP):	2.3	2.3
*Point Repeatability Z (σ) :	0.05 mm @ 1.0 m	0.2 mm @ 2 m
**VDI/VDE Accuracy:	0.1 mm @ 1.0 m	0.2 mm @ 2 m
Typical Capture Time (s) :	0.3 - 0.6	0.3 - 0.6
Dimensions (mm) :	265 × 57 × 100	353 × 57 × 100
Baseline (mm):	180	270
Weight (kg) :	1.6	1.9
Operating Temperature (°C) :	0 - 45	0 - 45
Communication Interface:	Ethernet	Ethernet
Power Supply:	24V DC	24V DC
Safety and EMC:	CE/FCC/VCCI	CE/FCC/VCCI
Protection Class:	IP65	IP65
Cooling:	Passive	Passive
Image Sensor:	Sony CMOS for High-end Machine Vision	Sony CMOS for High-end Machine Vision

*The standard deviation of the single point Z value for 100 measurements. The measurement target is a ceramic plate.

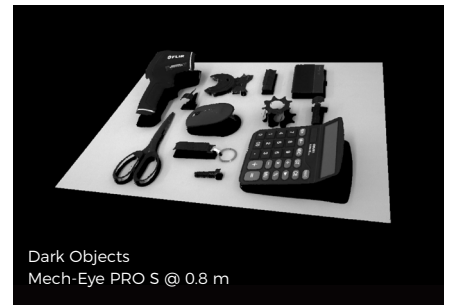
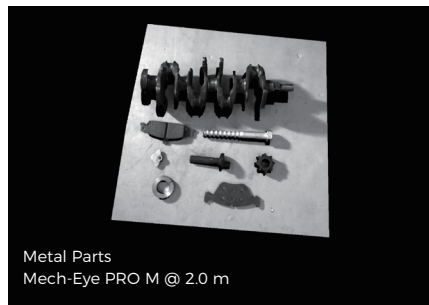
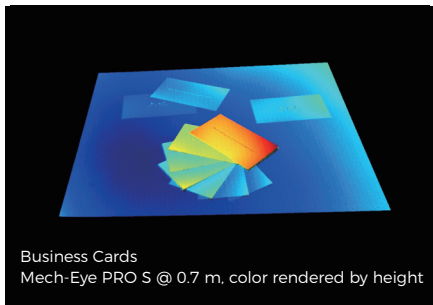
**Refer to VDI/VDE 2634 Part II.

Field of View (mm)



Point Clouds

- Mech-Eye PRO outputs complete, detailed, and accurate 3D point clouds of metals, plastics, wood, and more under demanding light conditions of > 20,000 lx.*



- Mech-Eye PRO color version can output accurate and high-quality colored 3D point clouds.
- With enhanced performance for reflection, Mech-Eye PRO can generate high-quality imaging of reflective objects.



*Applicable to monochrome version

Distribution Partner:



Mech-Mind Robotics
www.mech-mind.com
info@mech-mind.net