

Mech-Eye NANO

Palm-sized Industrial 3D Camera

High Precision · Small Size · Fast Acquisition
 High Flexibility · Easy Integration · Competitive Price



Specification

Optimal Scanning Range: 300 - 600 mm

Near FOV: 220 × 160 mm @ 0.3 m

Far FOV: 430 × 320 mm @ 0.6 m

Resolution: 1280 × 1024

Megapixels: 1.3 MP

Operating Temperature: 0 - 45 °C

Communication Interface: Gigabit Ethernet

Software APIs: C++/Python/C#/GenICam/HALCON

Class: IP65

Image Sensor: Other High-Performance CMOS for High-End Machine Vision

*Z Repeatability (σ): 0.1 mm @ 0.5 m

**Accuracy: 0.1 mm @ 0.5 m

Typical Capture Time: 0.6 - 1.1 s

Baseline: 68 mm

Dimensions: 145 × 51 × 85 mm

Weight: 0.7 kg

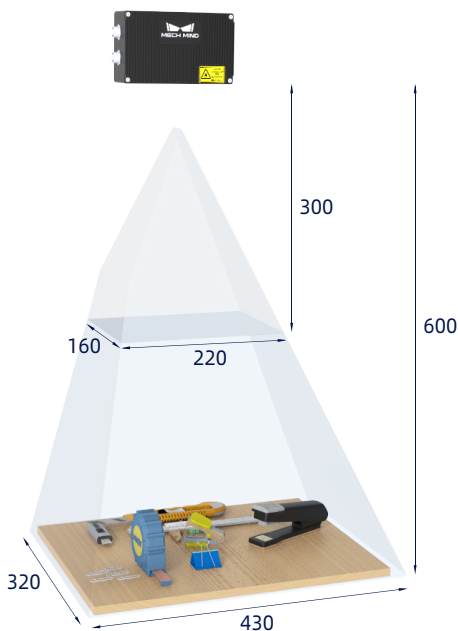
Power Supply: 24V DC, 1.5 A

Light Source: Blue LED(459 nm,RG2)

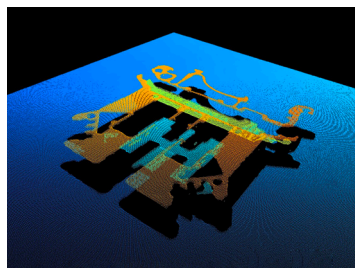
Safety and EMC: CE/FCC/VCCI

Cooling: Passive

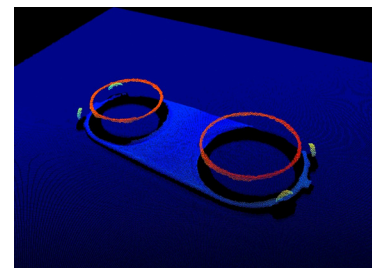
Field of View (mm)



Point Clouds



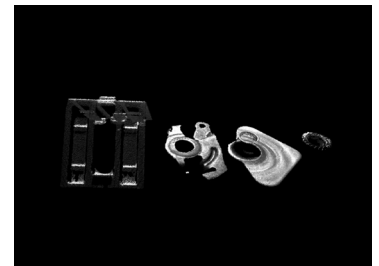
Precision Component



0.68 mm Thick Workpiece



Car Charging Port



Small Workpieces

*The standard deviation of the single point Z value for 10 measurements. The measurement target is a ceramic plate.

**Refer to VDI/VDE 2634 Part II.

Distribution Partner: