

# Mech-Eye LOG Industrial 3D Camera

## Fast and High-quality Imaging for Typical Logistic Scenarios

High Precision / High Stability / Easy Integration / Competitive Price



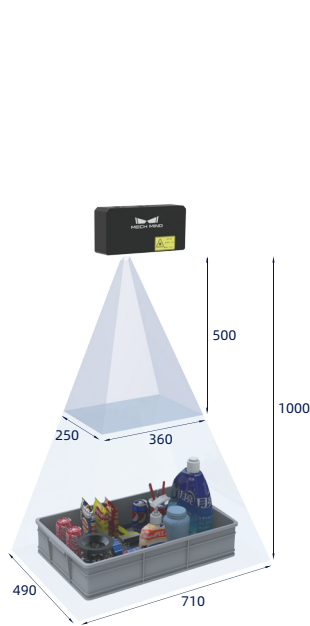
### Specification

	LOG S	LOG M
Optimal Scanning Range:	500 - 1000 mm	800 - 2000 mm
Near FOV:	360 × 250 mm @ 0.5 m	520 × 390 mm @ 0.8 m
Far FOV:	710 × 490 mm @ 1.0 m	1410 × 960 mm @ 2.0 m
Resolution:	1280 × 1024	1280 × 1024
Megapixels:	1.3 MP	1.3 MP
Z Repeatability ( $\sigma$ ):	0.1 mm @ 1 m	0.3 mm @ 2 m
Accuracy:	0.2 mm @ 1 m	0.3 mm @ 2 m
Typical Capture Time:	0.3 - 0.5 s	0.3 - 0.5 s
Baseline:	150 mm	280 mm
Dimensions:	270 × 72 × 130 mm	387 × 72 × 130 mm
Weight:	2.2 kg	2.4 kg
Operating Temperature:	0 - 45°C	0 - 45°C
Interface:	Ethernet	Ethernet
Image Sensor:	Sony CMOS for High-end Machine Vision	Sony CMOS for High-end Machine Vision
Power Supply:	24V DC	24V DC
Safety and EMC:	CE/FCC/VCCI	CE/FCC/VCCI
Protection Class:	IP65	IP65
Cooling:	Passive	Passive
Software APIs:	C++/Python/C#/GenICam/HALCON	C++/Python/C#/GenICam/HALCON

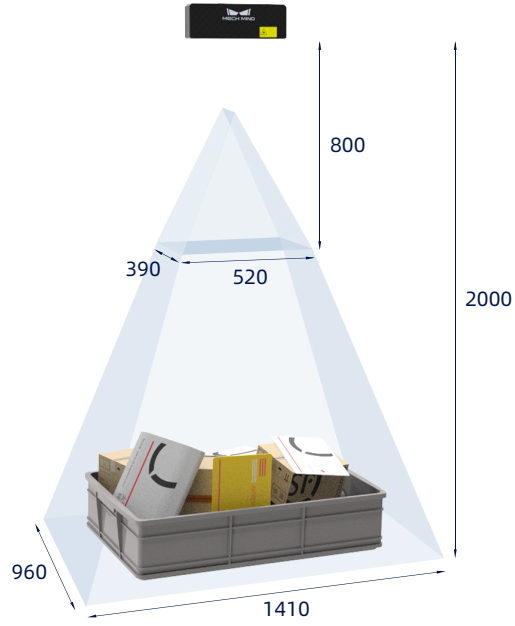
# Mech-Eye LOG Industrial 3D Camera

## Fast and High-quality Imaging for Typical Logistic Scenarios

### Field of View (mm)



LOG S



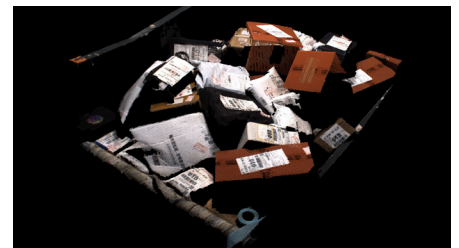
LOG M

### Point Clouds

Various Common Goods



Randomly-placed Real Express Parcels

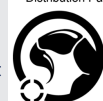


Mech-Eye LOG has been well applied in thousands of cases.



Mech-Mind Robotics Technologies Ltd.  
 Website: [www.mech-mind.com](http://www.mech-mind.com) E-mail: [info@mech-mind.net](mailto:info@mech-mind.net)

Distribution Partner:



**SCORPION  
VISION**

shop.scorpion.vision +44 (0) 1590 679333 sales@scorpion.vision