

Mech-Eye DEEP Industrial 3D Camera

For depalletizing and palletizing applications in logistics

Ultra-large FOV | High accuracy | For long-range working distance
High performance | Competitive price | Plug & play simple setup



Specification

Optimal Scanning Range: 1200–3500 mm

Near FOV: 1200 × 1000 mm @ 1.2 m

Far FOV: 3500 × 2800 mm @ 3.5 m

Depth Resolution: 2048 × 1536

RGB Resolution: 2000 × 1500

Megapixels: 3.0 MP

*Point Repeatability Z (σ): 1.0 mm @ 3.0 m

**VDI/VDE Accuracy: 3.0 mm @ 3.0 m

Typical Capture Time: 0.5–0.9 s

Image Sensor : Sony CMOS for High-end Machine Vision

Baseline: 300 mm

Dimensions: 366 × 77 × 92 mm

Weight: 2.4 kg

Light source: Red laser (638 nm, Class 2)

Operating Temperature: -10–45 °C

Interface: Ethernet

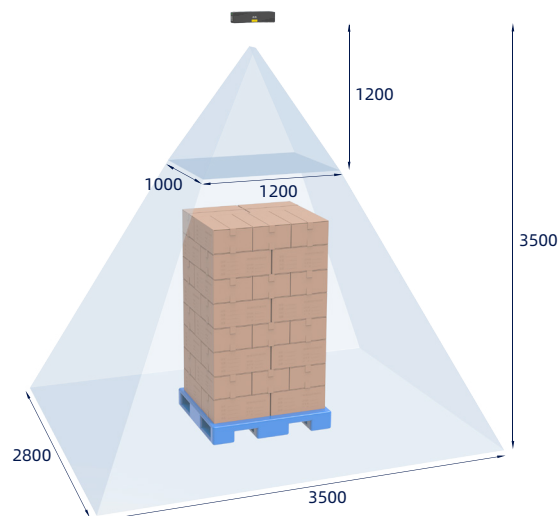
Power Supply: 24V DC

Safety and EMC: CE/FCC/VCCI/NRTL

Protection Class: IP65

Cooling: Passive

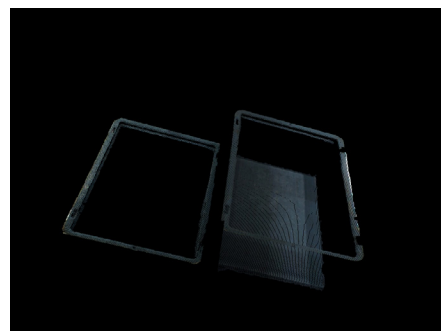
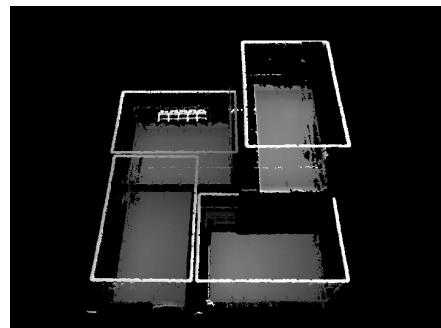
Field of View (mm)



*The standard deviation of the single point Z value for 100 measurements. The measurement target is a ceramic plate.

**Standard: VDI/VDE 2634 Part II.

Point Clouds



Tightly-packed cartons with patterns or tapes

Tightly-packed sacks with patterns

Thin-walled totes

Designed to enable large FOV logistics applications.



Distribution Partner:



**SCORPION
VISION**



Mech-Mind Robotics Technologies Ltd.
Website: www.mech-mind.com E-mail: info@mech-mind.net