

MV-CU020-19GM/GC

2 MP 1/2.8" CMOS GigE Area Scan Camera



GEN<i>i>CAM

GIG<i>E</i> VISION

Introduction

MV-CU020-19GM/GC camera adopts Sony® IMX290 sensor to provide high-quality images. It uses GigE interface to transmit non-compressed images in real time, and its max. frame rate can reach 56 fps in full resolution.

Key Feature

- Adopts low consumption platform with stable performance.
- Supports wide dynamic range, noise reduction and sharpness functions.
- Customized filter with strong anti-interference ability is optional.
- Supports hardware trigger, software trigger, free run, etc.
- Adopts GigE interface and max. transmission distance of 100 meters without relay.
- Compatible with GigE Vision V2.0 Protocol, GenICam Standard, and third-party software based on the protocol and standard.

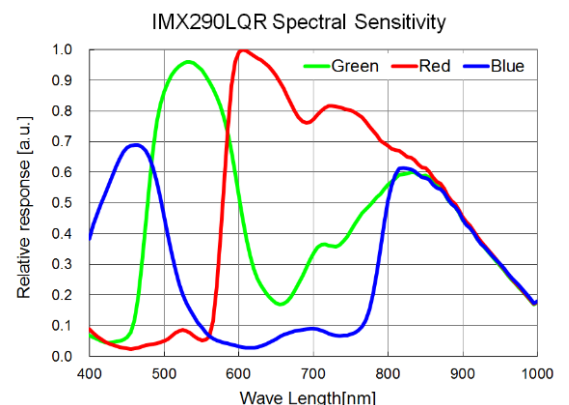
Available Model

- Mono camera: MV-CU020-19GM
- Color camera: MV-CU020-19GC
- Mono camera: MV-CU020-19GC (850nm Bandpass)

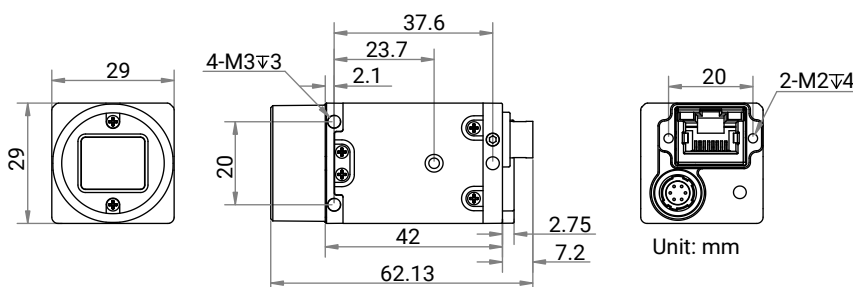
Applicable Industry

Mold protector, microscopy imaging, food and medicine package, etc.

Sensor Quantum Efficiency



Dimension



Specification

Model	MV-CU020-19GM	MV-CU020-19GC	MV-CU020-19GC(850nm Bandpass)
Performance			
Sensor type	CMOS, rolling shutter		
Sensor model	Sony® IMX290		
Pixel size	2.9 μm × 2.9 μm		
Sensor size	1/2.8"		
Resolution	1920 × 1080		
Max. frame rate	56 fps @1920 × 1080 Mono 8		
Dynamic range	90 dB		
SNR	41 dB		
Gain	0 dB to 24 dB	0 dB to 30 dB	0 dB to 24 dB
Exposure time	64 μs to 130 ms	128 μs to 260 ms	64 μs to 130 ms
Exposure mode	Off/Once/Continuous exposure mode		
Mono/color	Mono	Color	Mono
Pixel format	Mono 8	Mono 8, YUV422Packed	Mono 8
Binning	Supports 1 × 1, 2 × 2	Not supported	Supports 1 × 1, 2 × 2
Decimation	Not supported		
Reverse image	Supports horizontal and vertical reverse image output		
Electrical feature			
Data interface	Gigabit Ethernet, compatible with Fast Ethernet		
Digital I/O	6-pin P7 connector provides power and I/O, including opto-isolated input × 1 (Line 0), opto-isolated output × 1 (Line 1), bi-directional non-isolated I/O × 1 (Line 2).		
Power supply	9 VDC to 24 VDC, supports PoE		
Power consumption	Typ. 2.1 W@12 VDC		
Mechanical			
Lens mount	C-mount		
Dimension	29 mm × 29 mm × 42 mm (1.1" × 1.1" × 1.7")		
Weight	Approx. 100 g (0.2 lb.)		
Ingress protection	IP30 (under proper lens installation and wiring)		
Temperature	Working temperature: 0 °C to 50 °C (32 °F to 122 °F) Storage temperature: -30 °C to 70 °C (-22 °F to 158 °F)		
Humidity	20% to 80% RH, non-condensing		
General			
Client software	MVS or third-party software meeting with GigE Vision Protocol		
Operating system	32/64-bit Windows XP/7/10, 32/64-bit Linux and 64-bit MacOS		
Compatibility	GigE Vision V2.0, GenICam		
Certification	CE, RoHS, KC		

Distribution Partner:



SCORPION VISION

🌐 shop.scorpion.vision ☎ +44 (0) 1590 679333 @ sales@scorpion.vision

Hangzhou Hikrobot Co., Ltd.
en.hikrobotics.com

© Hangzhou Hikrobot Co., Ltd. All Rights Reserved.

Hangzhou Hikrobot does not tolerate any infringement. Any organization or individual may not imitate or reproduce in whole or in part of the content. The data herein is based on Hikrobot's internal evaluation. Actual data may vary depending on specific configuration and operating condition. The information herein is subject to change without notice. All the content has been checked conscientiously. Nevertheless, Hikrobot shall not be liable to damages resulting from errors, inconsistencies or omissions.