

INTRODUCTION

Arducam designed this acrylic case to use with several camera modules for Raspberry Pi from Arducam and the Raspberry Pi Foundation.

The following instructions show you how to assemble the acrylic pieces with the Arducam B0033 for Raspberry Pi Camera. The time required to build this is about **10 minutes**.

You can find more information, including **video guidance** and **high-definition pictures**, on our website: <http://www.arducam.com/docs/cameras-for-raspberry-pi/camera-case/>

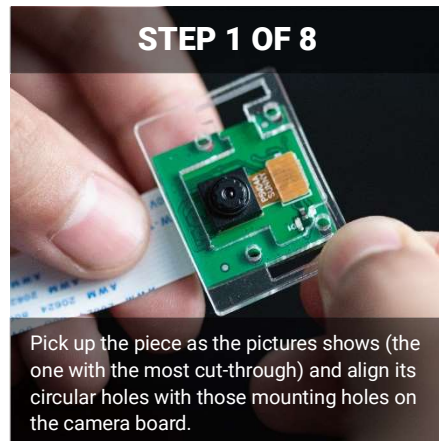
Feel free to drop us a line if you need our help: support@arducam.com

GET READY

You can:

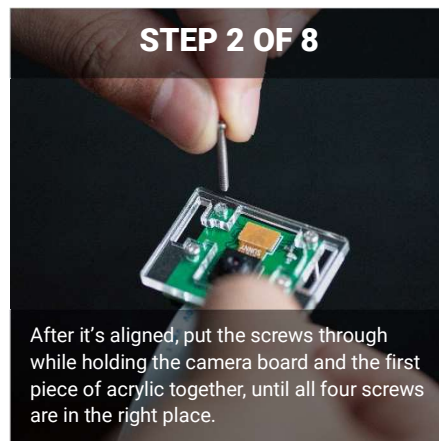
- Sit in front of a desk,
- Remove the film protector on the acrylic,
- Get a screwdriver

and you are good to go.

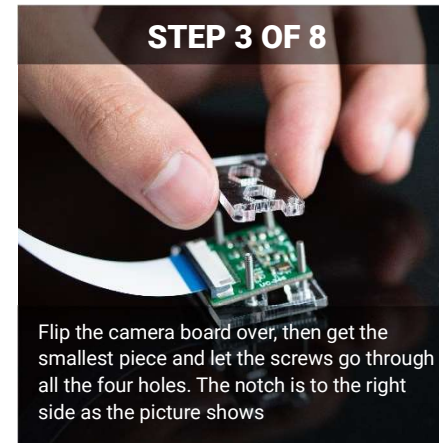


Pick up the piece as the pictures shows (the one with the most cut-through) and align its circular holes with those mounting holes on the camera board.

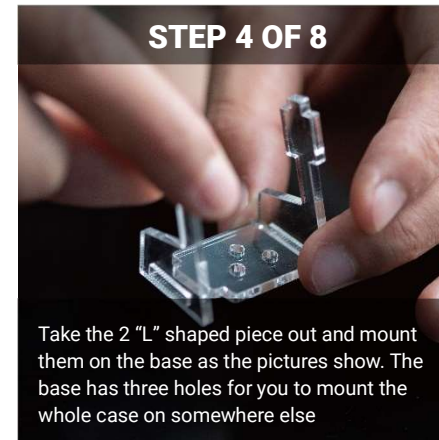
The gap should lie between the left two holes while the white ribbon cable is on the bottom side.



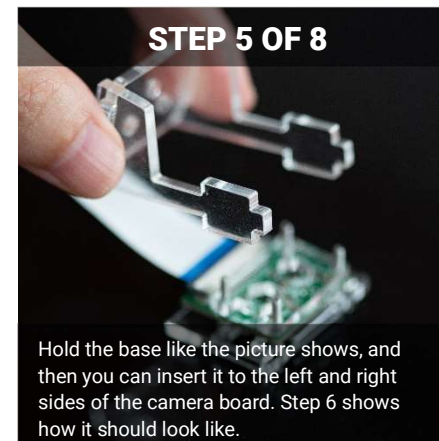
After it's aligned, put the screws through while holding the camera board and the first piece of acrylic together, until all four screws are in the right place.



Flip the camera board over, then get the smallest piece and let the screws go through all the four holes. The notch is to the right side as the picture shows



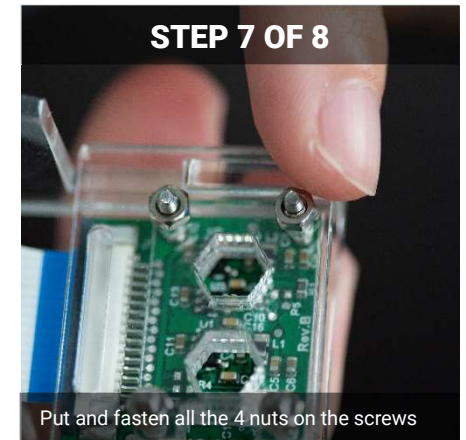
Take the 2 "L" shaped piece out and mount them on the base as the pictures show. The base has three holes for you to mount the whole case on somewhere else



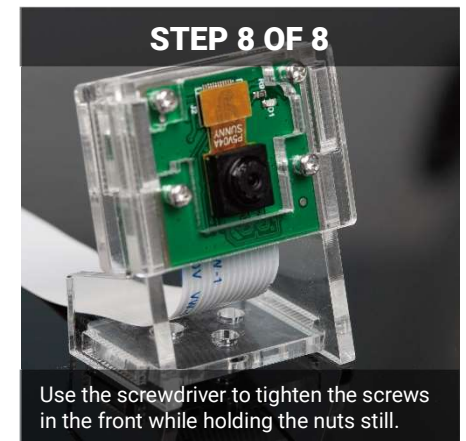
Hold the base like the picture shows, and then you can insert it to the left and right sides of the camera board. Step 6 shows how it should look like.



Hold the base in place and mount the last piece on the 4 screws.



Put and fasten all the 4 nuts on the screws



Use the screwdriver to tighten the screws in the front while holding the nuts still.