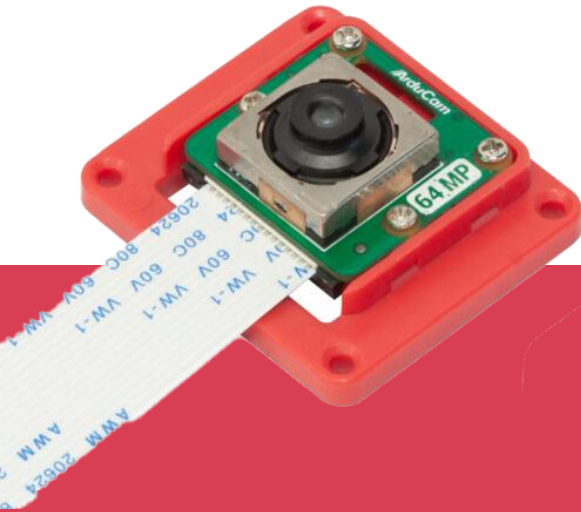




SCORPION  
VISION



# 64MP OwlSight OV64A40 Autofocus Camera

## Getting Started

Operating instructions,  
safety information, etc.

Published in December 10, 2023



# Hardware Connection

## Camera&Cable Connection

- 15pin-15pin FFC Cable (for Raspberry Pi 4, etc.)

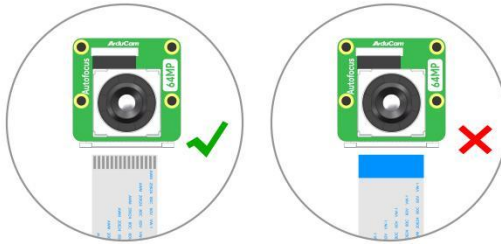


Figure 1. camera connection(15pin-15pin)

- 15pin-22pin FPC Cable (for Raspberry Pi 5, etc.)

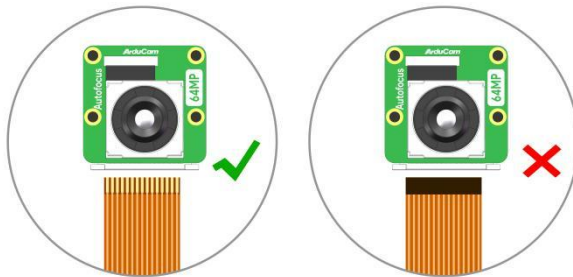


Figure 2. camera connection(15pin-22pin)

# Hardware Connection

## Hardware Connection on Raspberry Pi 4

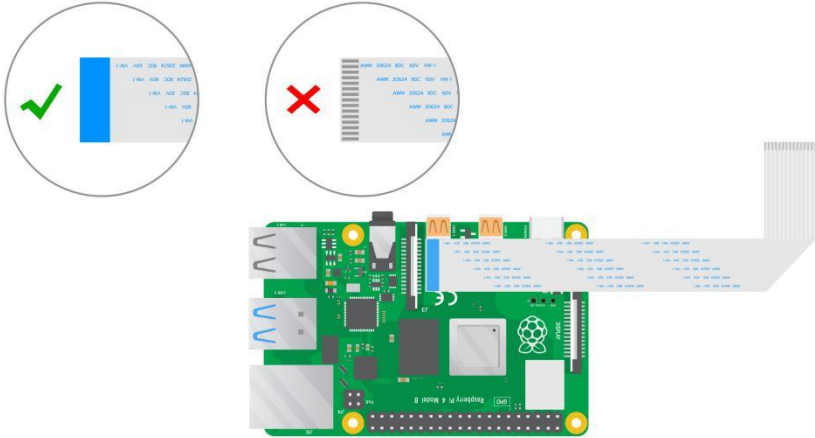


Figure 3. Hardware connection on Pi 4(cable demo)

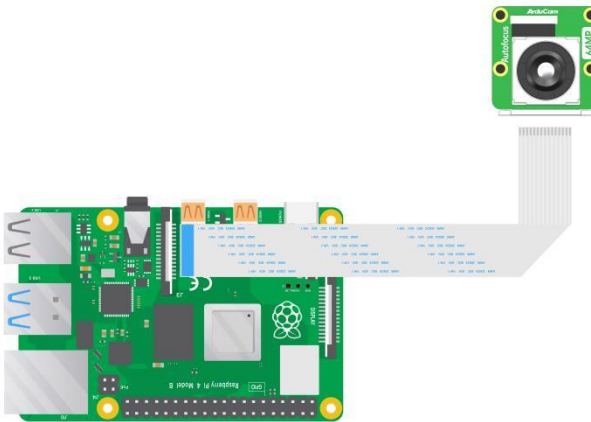


Figure 4. Hardware connection on Pi 4(Final Effect)

# Hardware Connection

## Hardware Connection on Raspberry Pi 5

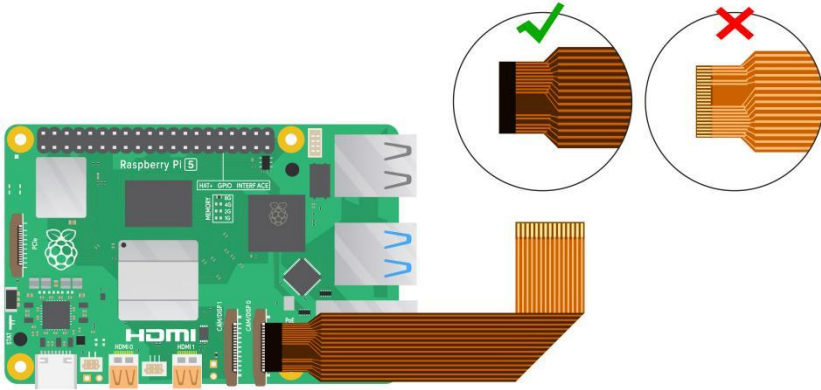


Figure 5. Hardware connection on Pi 5(cable demo)

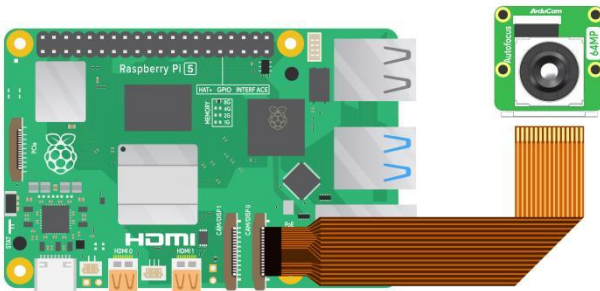


Figure 6. Hardware connection on Pi 5(Final Effect)

## Software Guide

In the next updated version, there is no need to install additional driver for Arducam 64MP OwlSight OV64A40 camera module. You just need to configure the boot file to access the camera.

### for Regular User Guide

#### Quick start:

<https://docs.arducam.com/Raspberry-Pi-Camera/Native-camera/64MP-OV64A40/>

#### Adjust link-frequency speed:

<https://docs.arducam.com/Raspberry-Pi-Camera/Native-camera/64MP-OV64A40/#adjust-link-freq-speed>

#### Long Exposure Time Guide:

<https://docs.arducam.com/Raspberry-Pi-Camera/Native-camera/64MP-OV64A40/#long-exposure-guide>

#### Autofocus/Manual Focus:

<https://docs.arducam.com/Raspberry-Pi-Camera/Native-camera/64MP-OV64A40/#autofocusmanual-focus-function>

### for libcamera apps

<https://docs.arducam.com/Raspberry-Pi-Camera/Native-camera/Libcamera-User-Guide/>

## Instructions for Safe Use

To properly use the 64MP OwlSight Autofocus Camera, kindly note:

- Before connecting, you should always power the Raspberry pi off and remove the power supply first.
- Make sure the cable on the camera board is locked in place.
- Make sure the cable is correctly inserted in the Raspberry pi board, MIPI CSI-2 connector.
- Avoid high temperatures.
- Avoid water, moisture, or conductive surfaces while in operation.
- Avoid folding, or straining the flex cable.
- Avoid cross-threading with tripods.
- Gently push/pull the connector to avoid damaging the printed circuit board.
- Avoid moving or handling the printed circuit board excessively while it is in operation.
- Handle by the edges to avoid damages from electrostatic discharge.
- Where the camera board is stored should be cool and as dry as possible.
- Sudden temperature/humidity changes can cause dampness in the Lens and affect the image/video quality.

Distribution Partner:



**SCORPION  
VISION**

🌐 [shop.scorpion.vision](https://shop.scorpion.vision) ☎ +44 (0) 1590 679333 @ [sales@scorpion.vision](mailto:sales@scorpion.vision)