

BrakeRack

By Safety Hoist Company

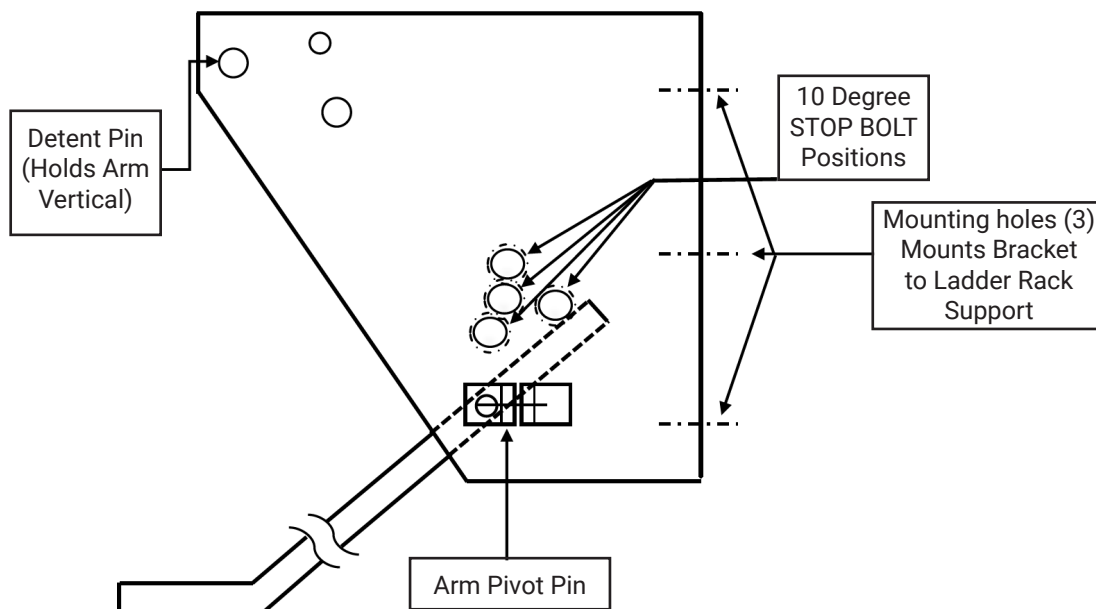
Installation Manual

BR-22000 Model



BR-22000 Model for Installation Instructions

- 1 Brake Rack **BR-22000** is to be installed in accordance with mounting template closed, taking note that *there is a **top and bottom** to the mounting template.*
- 2 The **BR-22000** is **ONLY** to be mounted to **permanently** installed steel or aluminum ladder racks that can **SAFELY** take the weight of the brake and **when installed.**
- 3 The **BR-22000** is provided with a $\frac{1}{2} \times 2 \frac{3}{4}$ **STOP BOLT** mounted for “**vertical**” post ladder racks to position the brake **horizontally** in the lowered position.
- 4 IF your ladder rack is **angled** off the vertical, reposition the **STOP BOLT** into one of the 10-degree holes that is most appropriate to adjust the arm to horizontal with brake rack in lowered position. Use the $\frac{3}{4}$ Outside Diameter by $1 \frac{1}{2}$ long **spacer** to make fine tune adjustments in addition to the 10-degree holes supplied on the **BR-22000** body.



Mounting of Brake to Brake-Rack Swing Arm

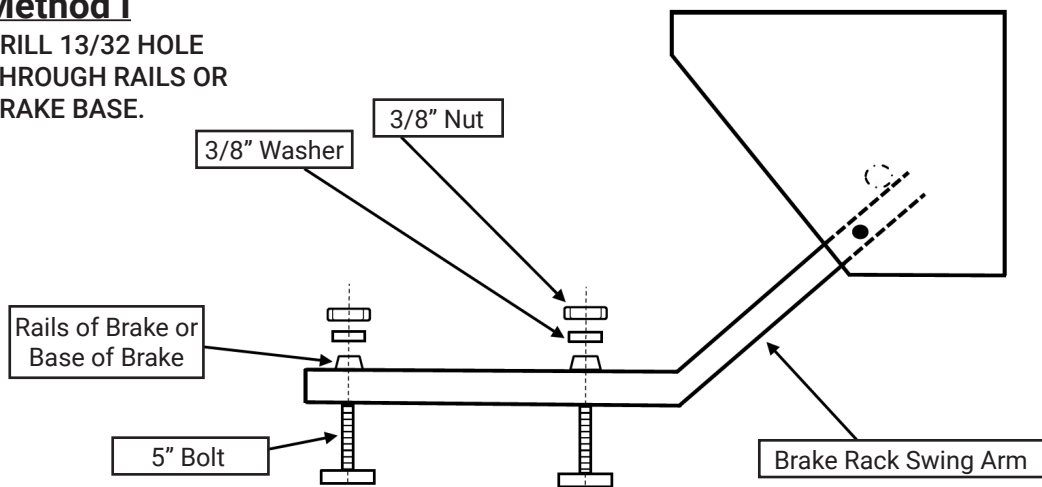
Method I – If you have access to support rail of brake, drill hole directly through rail as shown in figure. Method I Mounting. Use the Brake Rack swing arm hole pattern as a guide in drilling holes in the rails. Drill 4 holes in brake to mount it securely to Brake Rack swing arm.

Method II – If you don't have direct access to the Brake rails or chose not to drill through them, Method II allows mounting using a clamp plate. 4 clamp plates are supplied. Use 1 clamp plate and 2 bolts in 4 locations to mount the Brake securely to the Brake Rack Swing Arm. See figure Method II Mounting No drilling is required. Use 2 holes in Brake Rack Swing Arm.

Note: If Brake is too deep for Brake Rack Swing Arm mounting hole pattern, or you want to mount the Brake further out from side of the truck, we have provided 2 steel angles pre-drilled. Use these angles to extend the swing arm mounting area. See Figure Below.

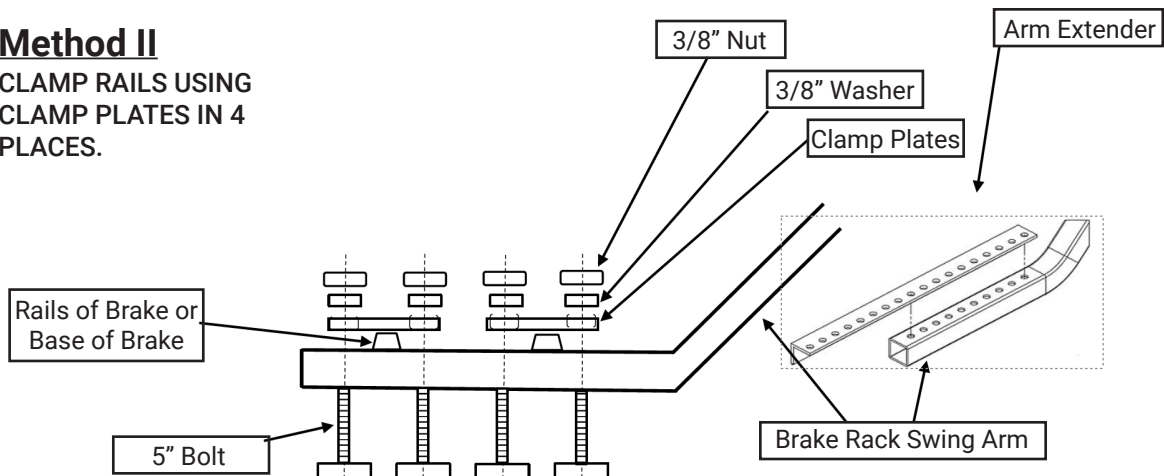
Method I

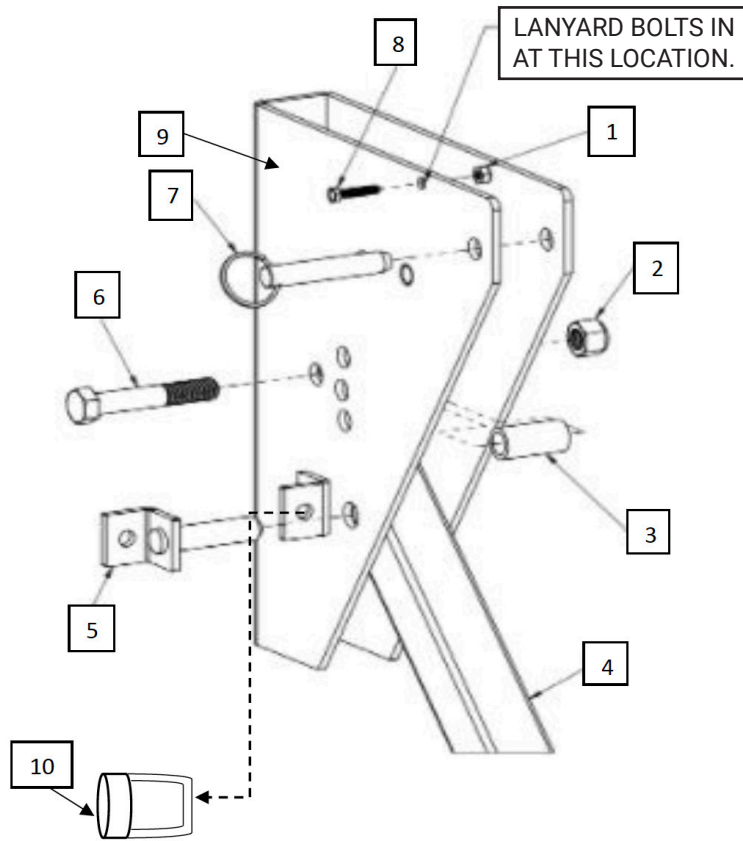
DRILL 13/32 HOLE THROUGH RAILS OR BRAKE BASE.



Method II

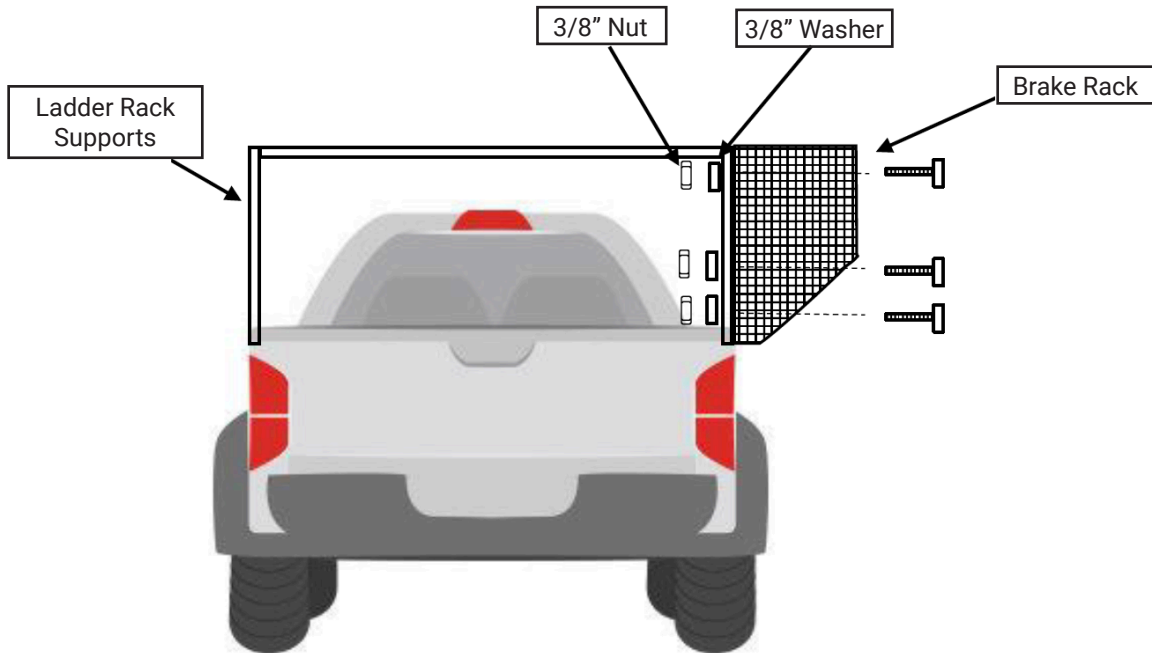
CLAMP RAILS USING CLAMP PLATES IN 4 PLACES.



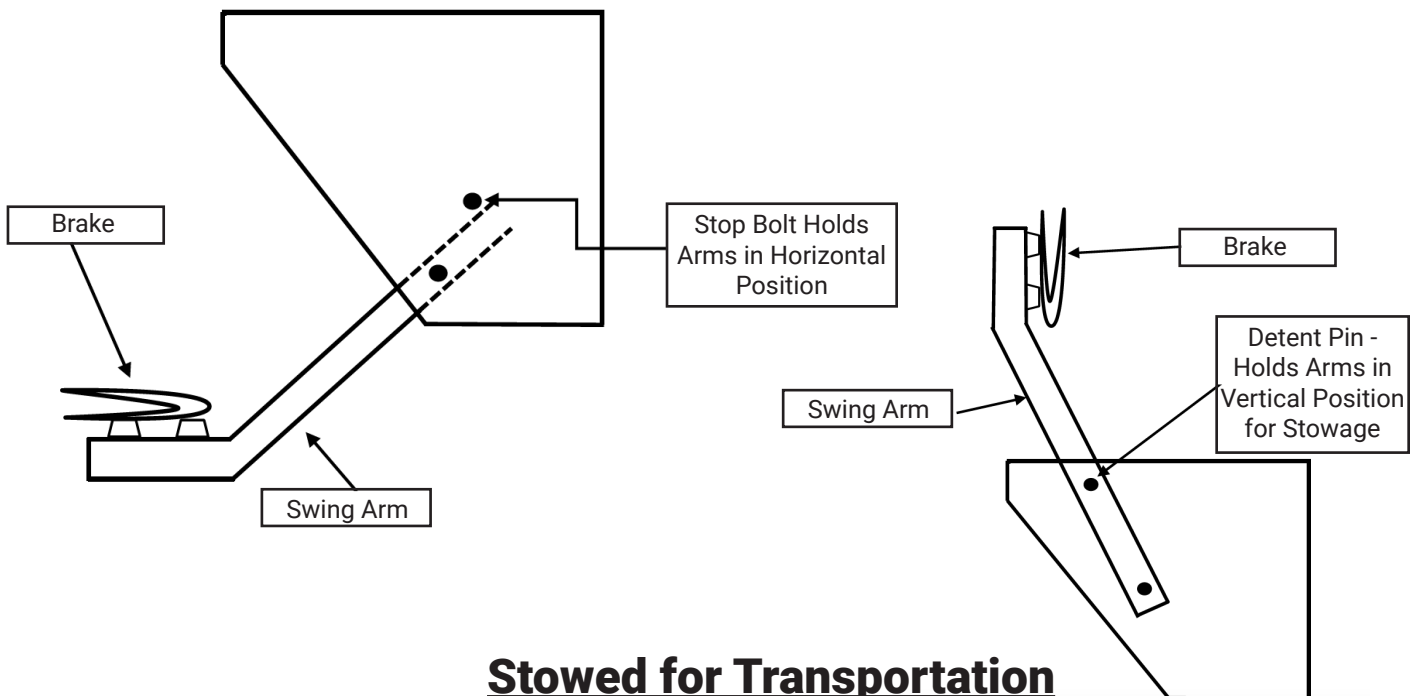


Item	Description
1	NUT & LOCK
2	1/2 -13 NYLON LN
3	SLEEVE
4	MOUNTING ARM
5	ARM PIVOT PIN
6	HEX HD. BOLT 1/2 - 13X 2 1/4
7	DETENT PIN
8	HEX HD. BOLT
9	MOUNTING BRACKET
10	PADLOCK

Overview – Mounting Bracket to Ladder Racks



Swung Down for Work Position



Stowed for Transportation

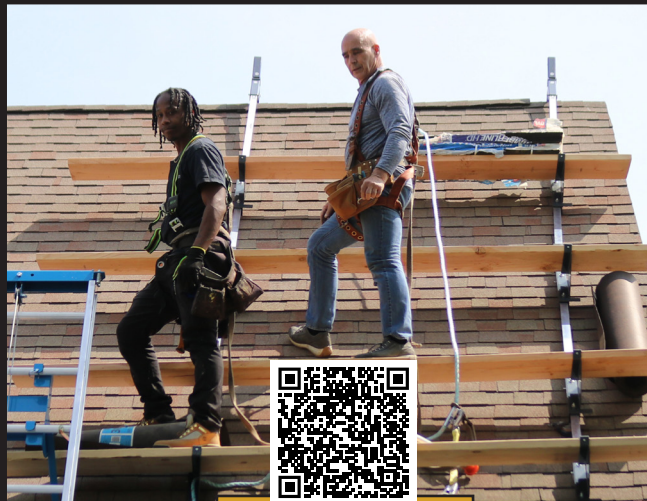
More From SAFETY HOIST^{CO.}



Gas Material Hoists



Electric Material Hoists



SteepSlope Scaffold

SAFETY HOIST^{CO.}

Safety Hoist Company • 604 Jeffers Circle • Exton, Pennsylvania 19431
www.safetyhoistcompany.com • info@safetyhoistcompany.com