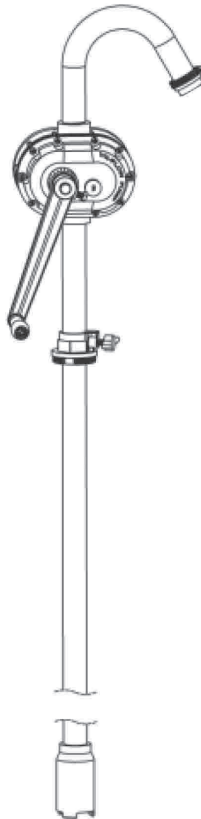




High Flow Drum Pump Operating Instructions & Parts Manual



PN# FPM-001



WARNING:

Read carefully and understand all **INSTRUCTIONS** before operating. Failure to follow the safety rules and other basic safety precautions may result in serious personal injury. Save these instructions in a safe place and on hand so that they can be read when required. Keep these instructions to assist in future servicing.



GENERAL SAFETY REGULATIONS



WARNING: The warnings, cautions, and instructions discussed in this instruction manual cannot cover all possible conditions or situations that could occur. It must be understood by the operator that common sense and caution are factors that cannot be built into this product, but must be supplied by the operator.

1. Keep the work area clean and dry. Damp or wet work areas can result in injury.
2. Keep children away from work area. Do not allow children to handle this product.
3. Use the right tool for the job. Do not attempt to force small equipment to do the work of larger industrial equipment. There are certain applications for which this equipment was designed. It will do the job better and more safely at the capacity for which it was intended. Do not modify this equipment, and do not use this equipment for a purpose for which it was not intended.
4. Check for damaged parts. Before using this product, carefully check that it will operate properly and perform its intended function. Check for damaged parts and any other conditions that may affect the operation of this product. Replace damaged or worn parts immediately.
5. Do not overreach. Keep proper footing and balance at all times to prevent tripping, falling, back injury, etc.
6. DO NOT use the equipment when tired or under the influence of drugs, alcohol, or medication. A moment of inattention while operating this equipment may result in serious personal injury

DESCRIPTION

This pump is commonly used for dispensing or transferring non-corrosive and petroleum based fluids, such as Diesel, Kerosene, Transmission Fluid, Machine Oil, Lube Oil, Fuel Oil, Anti-Freeze, and ideal for heavy-duty use in industrial, automotive and agricultural applications. Supplied with a 2" bung adapter to fit most 15gallon/55L, 30gallon/110L, 55gallon/220L drums. This pump is a self-priming unit, dispenses approximately 33oz per rotation. Do not use this pump with organic solvents, strong alkalis, strong acids and water-based fluids.

SPECIFICATIONS PN# FPM-001

Pump Type	Rotary - Vane
Flow	1 Liter/33oz per rotation
Maximum Fluid Temperature	140°F / 60°C
Bung Adapter	2" Male
Suction Tube Length	40"/100cm maximum
Inlet	1-1/4"(32mm) O.D.
Outlet	1-1/4"(32mm) O.D.
Wetted Materials of Construction	Aluminum, Steel & NBR
Maximum Viscosity	500SSU

GENERAL SAFETY INFORMATION

1. Always carefully read, thoroughly understand and follow the pump operating instructions. Use this pump correctly and with care for the purpose for which it is intended. Failure to do may cause damage or personal injury, and will invalidate the warranty. Retain instructions for future reference.
2. Contact your chemical or fluid supplier to check for compatibility with pump prior to installation and operation
3. Prior to use, always carefully and thoroughly read and understand the OSHA information contained in the Safety Data Sheet supplied for the chemical which is to be pumped.
4. Wear protective clothing (goggles, face masks, long sleeves, long pants, gloves, aprons, etc.) as set forth in the OSHA Safety Data Sheet when pumping any hazardous chemicals.
5. When using flammable liquids, pump containers should be grounded to avoid static electricity.
6. Any pump used for transferring flammable liquids must be stored in a ventilated area after use.
7. Pump should be washed out before it is used since processing lubricants may contaminate the fluids.
8. Prior to use, inspect your pump thoroughly verifying its proper assembly.
9. If pump is removed from drum, it should be thoroughly rinsed in a liquid that is compatible with both the pump and fluid.

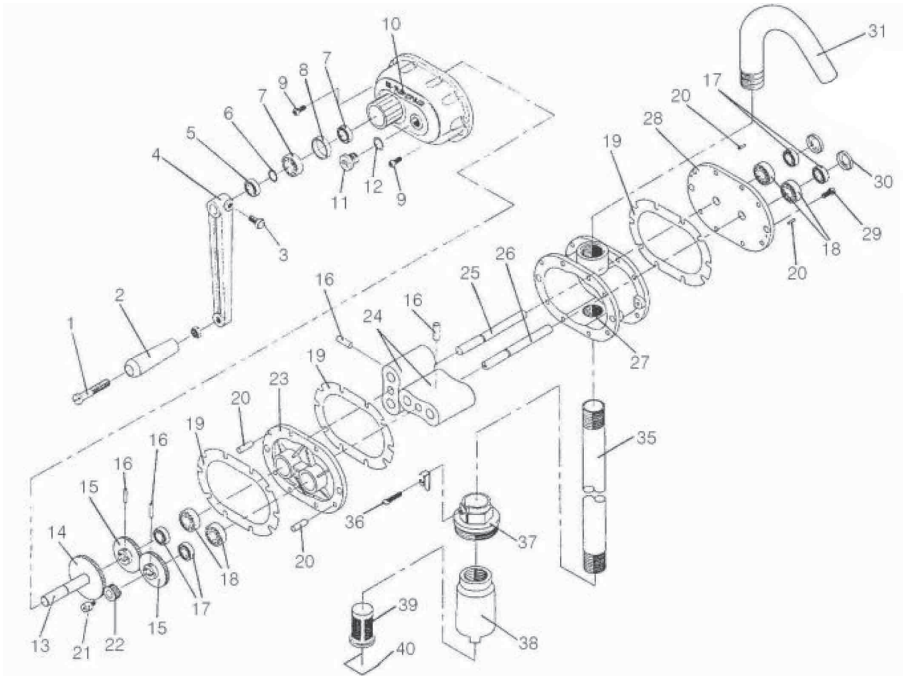
ASSEMBLE AND INSTALLATION

1. Check to see if all parts are included.
2. Assemble handle (Ref No. 1+2+3+4) to Reinforcement Shaft (Ref No. 13). Align set screw (Ref No.3) to indent of Reinforcement Shaft (Ref No. 13) and tighten the set screw (Ref No. 3) to Reinforcement Shaft (Ref No.13).
3. In order to avoid leakage, please use Teflon tape provided to seal three suction pipe (Ref No.35). Insert the bung adapter (Ref No. 36+37) into suction pipe (Ref No. 35) and thread suction pipe (Ref No. 35) into pump inlet.
4. Insert pump and suction tube assembly led with bung adapter into the drum, and then tighten bung adapter thumb screw (Ref No. 36) by hand. Be sure to set pump and suction tube assembly so that the suction tube is at the desired depth in the drum and is not blocked.

OPERATION

1. Fill with SAE 30 oil or equivalent lubricant up to the reference line through the lubrication bolt hole which sealed with rhombic bolt (Ref No. 11). As short lubricant can damage the gears, test and inspect the lubrication periodically can avoid troubles occur.
2. Turn the handle in clockwise direction and discharge one liter per revolution.
3. A filter of #60 mesh polyethylene net is provided, located at the bottom of suction pipe. Motor revolution becomes harder when the filter is clogged with dust. Remove the filter periodically and clean with kerosene.
4. Warning: The pump will become harder to turn if used with high viscosity liquid, which may shorten the life of the pump. Do not pump with any solvent, chemical, waste oil and stained liquid.

REPAIR PARTS ILLUSTRATION



Part No.	Description	Q'ty	Part No.	Description	Q'ty
1	Handle Rivet	1	20	Pin	4
2	Handle	1	21	Screw	1
3	set screw	1	22	Pinion Gear	1
4	Crank Arm	1	23	Inside Cover	1
5	Oil Seal	1	24	Roots	2
6	Stop Ring	1	25	Roots Shaft	1
7	Bearing	1	26	Roots Shaft	1
8	Bearing Collar	1	27	Housing	1
9	Screw	10	28	Outside Cover	1
10	Gear Cover	1	29	Screw	10
11	Rhombic Bolt	1	30	Bearing Cap	2
12	O-Ring	1	31	Spout	1
13	Reinforcement Shaft	1	35	Suction Pipe	1
14	Reinforcement Gear	1	36	Thumb Screw	1
15	Timing Gear	2	37	Bung Adapter	1
16	Pin	4	38	Filter Body	1
17	Oil Seal	4	39	Strainer	1
18	Bearing	4	40	Filter Stopper	1
19	Cover Packing	3			

DESCRIPTION

SPECIFICATIONS

GENERAL SAFETY INFORMATION

ASSEMBLE AND INSTALLATION

OPERATION

REPAIR PARTS ILLUSTRATION



Macnaught Americas
(813) 628-5506 | info@macnaughtusa.com

* Read Manual Before Use!