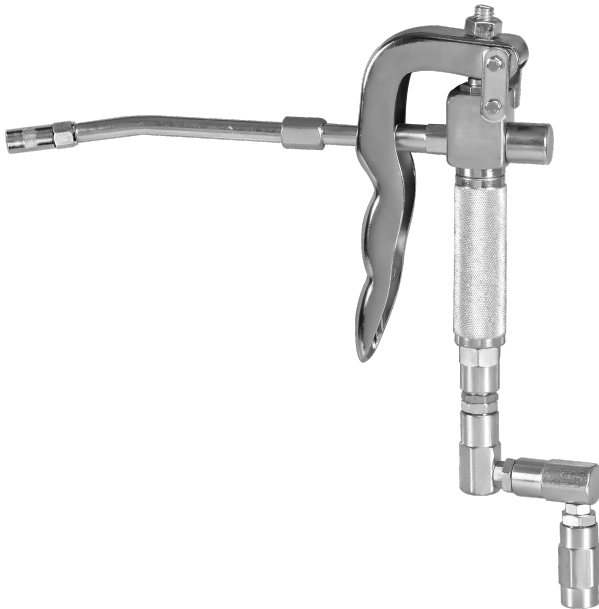




# Grease Control Valve Instruction Manual

---



**WARNING:**

Read carefully and understand all INSTRUCTIONS before operating. Failure to follow the safety rules and other basic safety precautions may result in serious personal injury. Save these instructions in a safe place and on hand so that they can be read when required. Keep these instructions to assist in future servicing.

---

## TECHNICAL DETAILS

<b>Item No.</b>	<b>M3B3-01</b>
<b>Inlet Connection</b>	1/4" female 360° swivel
<b>Pressure Range</b>	5800psi / 400bar
<b>Weight</b>	3.15lbs / 1.43kgs

### **IMPORTANT**

Read the safety warnings and instructions in this manual carefully, before installation and start-up of the control handle. It is the responsibility of the purchaser to retain this manual for future reference. Failure to comply with the recommendations stated in this manual may damage the control handle and void factory warranty.

Airborne particles and loud noise hazards.

Wear ear and eye protection.

Before doing any maintenance on the control handle, be certain all pressure is completely vented from the pump, suction, discharge, piping, and all other openings and connections.

Be certain the air supply is locked out or made non-operational, so that it cannot be started while work is being done on the control handle. Be certain that approved eye protection and protective clothing are worn at all times in the vicinity of the control handle. Failure to follow these recommendations may result in serious injury or death.

### **CAUTION**

Maximum fluid pressure 600BAR/8700 PSI. Under no circumstances should the control handle be aimed at any person body. Personal injury may be caused.

## PRODUCT DESCRIPTION

The control handles are used for dispensing automotive lubricants.

## OPERATION

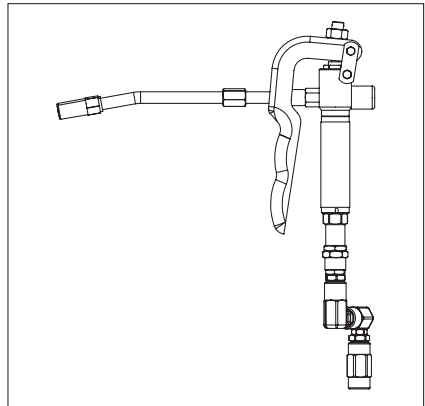
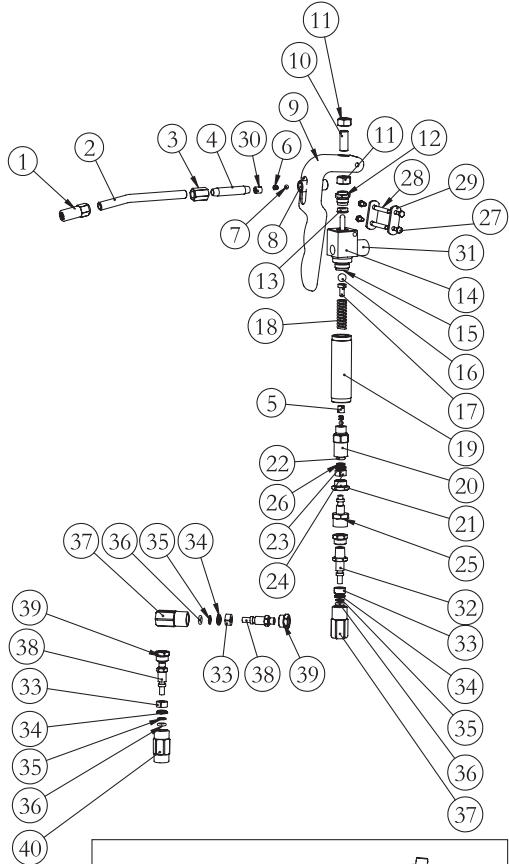
1. Connect the control handle to the lubricant supply line(1/4 BSP or 1/4 NPT male thread required).
2. Open the manual tip.
3. Squeeze control handle trigger. When the required amount of product has been dispensed, release the trigger to stop delivery. Close the manual tip.

## TROUBLE SHOOTING

If lubricant leaks around inlet and threads; apply thread sealant to tighten threads.

# EXPLODED VIEW AND PART LIST

Part No.	Description	Q'ty
1	4jaws gease fitting	1
2	Rigid delivery pipe	1
3	Hexad tie-in	1
4	Take-over tube	1
5	Adjust bolt	1
6	Spring	2
7	Steel ball	2
8	Unilateralism vave	1
9	Wrench	1
10	Adjust bolt	1
11	Nut	2
12	Guide	1
13	Gasket	1
14	Gun seat	1
15	Rod	1
16	Steel ball	1
17	Set	1
18	Spring	
19	Handle	1
20	Valve seat	1
21	Nut	1
22	O-ring	1
23	Block ring	1
24	Axis tile	2
25	Axes	1
26	Liner ring	1
27	Hexad bolt	4
28	Join pipe	2
29	Join piece	2
30	Adjust Bolt	1
31	Clump Weight	1
32	Join	1
33	Axis tile	6
34	Block ring	3
35	Liner ring	3
36	O-ring	3
37	Join	2
38	Join	2
39	Nut	2
40	Join	1





**Macnaught Americas**  
**(813) 628-5506 | [info@macnaughtusa.com](mailto:info@macnaughtusa.com)**

\* Read Manual Before Use!