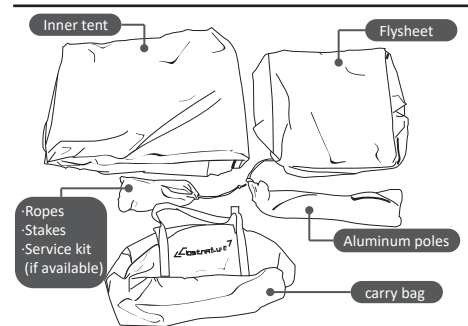
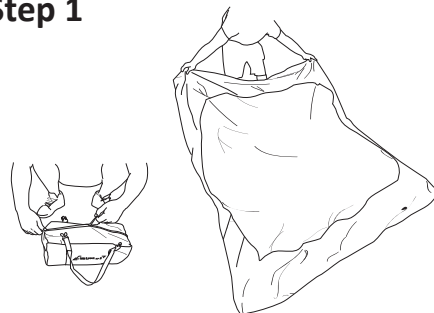


Clostrature Tent Set-up Instruction



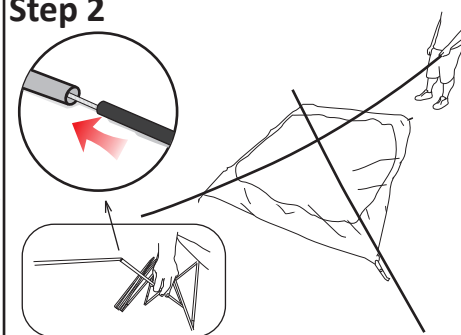
Your Clostrature tent includes: 1* carry bag, 1* inner tent, 1* flysheet, 2*aluminum poles, 4* ropes, 14* stakes, 1*services kit(if available).

Step 1



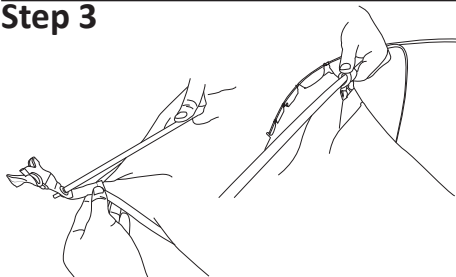
Select a dry, level site and clear the ground of any sharp objects to void damaging the tent. Spread out the floor of inner tent and make sure the tent is pulled taut and square.

Step 2



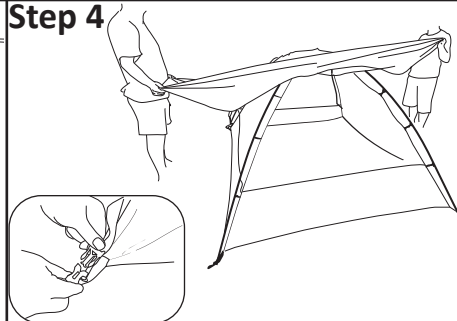
Assemble the 2 Aluminum poles by interlocking the sections (As above figure shown). Place the 2 poles cross each other on the inner tent.

Step 3



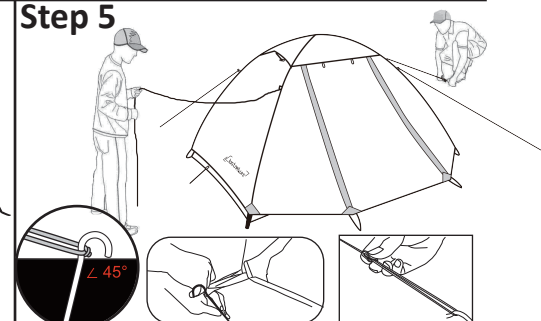
Insert the one end of pole to the pin located the corner of inner tent. Then insert another end of pole to the opposite corner's pin. Same as another pole. Pull up the center of inner tent and tie the center to the crossing of poles. Hook the clips on tent to the poles and make the tent tight.

Step 4



Pull the fly over the inner tent with the door lining up at front and back. Adjust each corner's belt and connect it to corresponding buckle of inner tent.

Step 5



Peg down the belts by stakes to the ground. Finally, put the ropes and fine tune the fly so it remains taut, then peg the ropes. Spread the snow skirt or just roll it up.