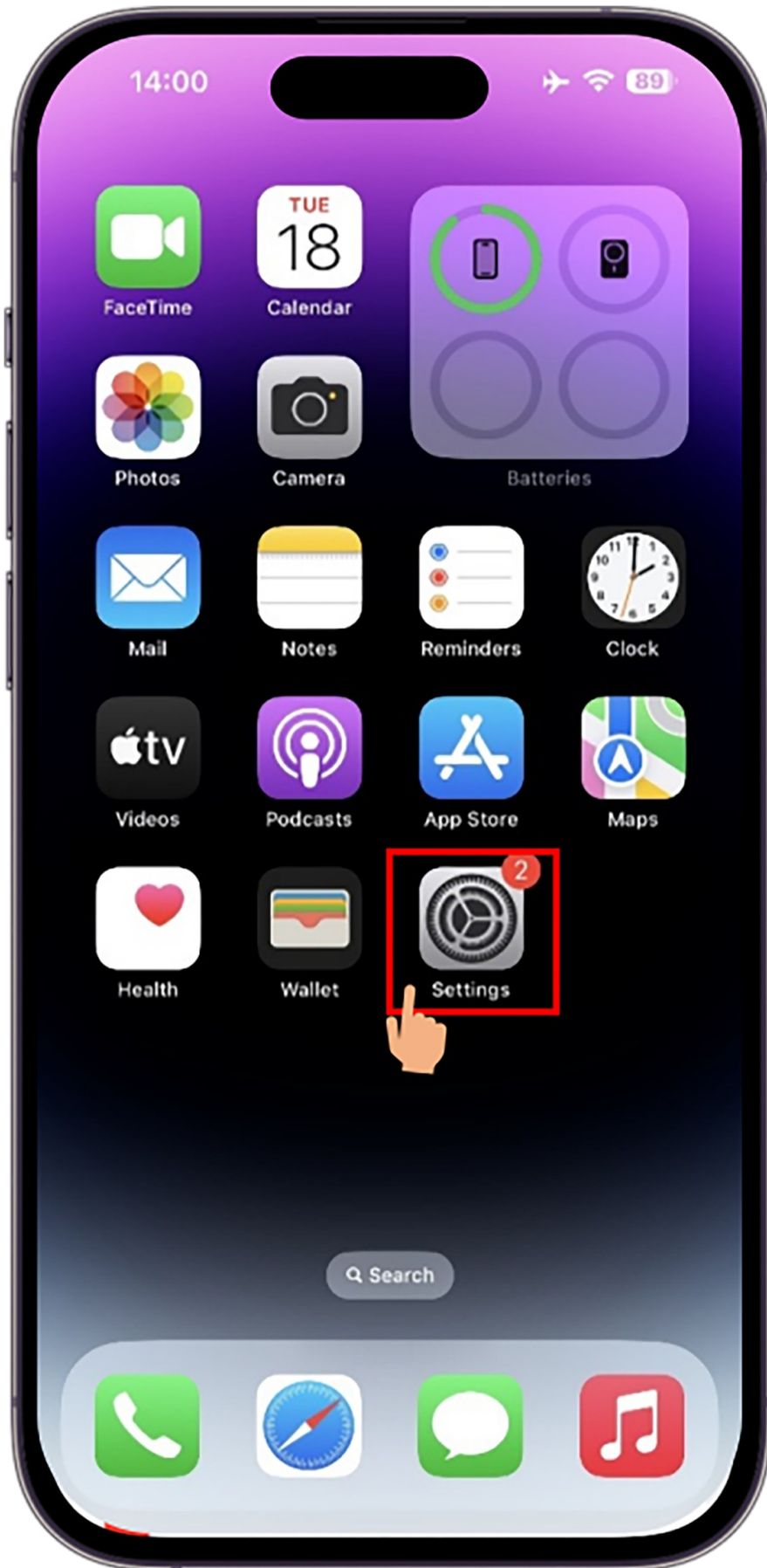


1

Phone case connection and
usage instructions.



11:19

✈️ 📶 91

Settings


 Airplane Mode

 WLAN NKUVPN >

 Bluetooth On >

 Cellular No SIM >

 Notifications >


 Sounds & Haptics >

 Focus >

 Screen Time >

 General >

 Control Center >


 Display & Brightness >


 Home Screen >

 Accessibility >

 Wallpaper >

 Siri & Search >

 Face ID & Passcode >

 Emergency SOS >

11:19

✈️ 📶 91

< Settings

Bluetooth

Bluetooth



Now discoverable as "iPhone".

DEVICES ✨

DESKTOP-FB058AB

DESKTOP-PT0DCB6

Redmi

Smart Case jok5

To pair an Apple Watch with this iPhone, go to the [Apple Watch app](#).



11:19

91

< Settings

Bluetooth

Bluetooth



Now discoverable as "iPhone".

MY DEVICES

Smart Case jok5



OTHER DEVICES



DESKTOP-FB058AB

DESK

Redm

Bluetooth Pairing Request

"Smart Case jok5" would like to pair with your iPhone.

Cancel

Pair



11:19

✈️ 📶 91

[← Settings](#)

Bluetooth

Bluetooth



Now discoverable as "iPhone".

MY DEVICES

Smart Case jok5

Connected ⓘ

OTHER DEVICES ✨

DESKTOP-FB058AB

DESKTOP-PT0DCB6

Redmi

To pair an Apple Watch with your iPhone, go to the [Apple Watch app](#).

11:19

✈️ 📶 91

Settings


 Airplane Mode

 WLAN NKUVPN >

 Bluetooth On >

 Cellular No SIM >

 Notifications >

 Sounds & Haptics >

 Focus >

 Screen Time >

 General >

 Control Center >


 Display & Brightness >

 Home Screen >

 Accessibility >

 Wallpaper >

 Siri & Search >

 Face ID & Passcode >

 Emergency SOS >



09:27



< Settings

Accessibility

Face ID & Attention >

Switch Control Off >

Voice Control Off >

Side Button >

Control Nearby Devices >

Apple TV Remote >

Pointer Control >

Keyboards >



HEARING

Hearing Devices >

Sound Recognition Off >

Audio/Visual >

Subtitles & Captioning >

Live Captions (Beta) >

GENERAL

Guided Access Off >

Accessibility Shortcut MFi Hearing Devices >

Per-App Settings >

09:27



< Accessibility

Keyboards

HARDWARE KEYBOARDS

Full Keyboard Access On >

Use an external keyboard to control your iPhone.

Key Repeat On >

Sticky Keys Off >

Slow Keys Off >

Customize the typing experience when using an external keyboard.

SOFTWARE KEYBOARDS

Show Lowercase Keys

This affects keyboards that use the Shift key to switch between uppercase and lowercase letters.

09:27



< Keyboards Full Keyboard Access

Full Keyboard Access



1

Use an external keyboard to control your iPhone.

- To show Help: → H
- To move forward: →
- To move backward: ⇧ →
- To activate: Space
- To go Home: Fn H
- To use the App Switcher: Fn ↑
- To use the Control Center: Fn C
- To use the Notification Center: Fn N

Commands >

APPEARANCE

Auto-Hide

15s >

Increase Size



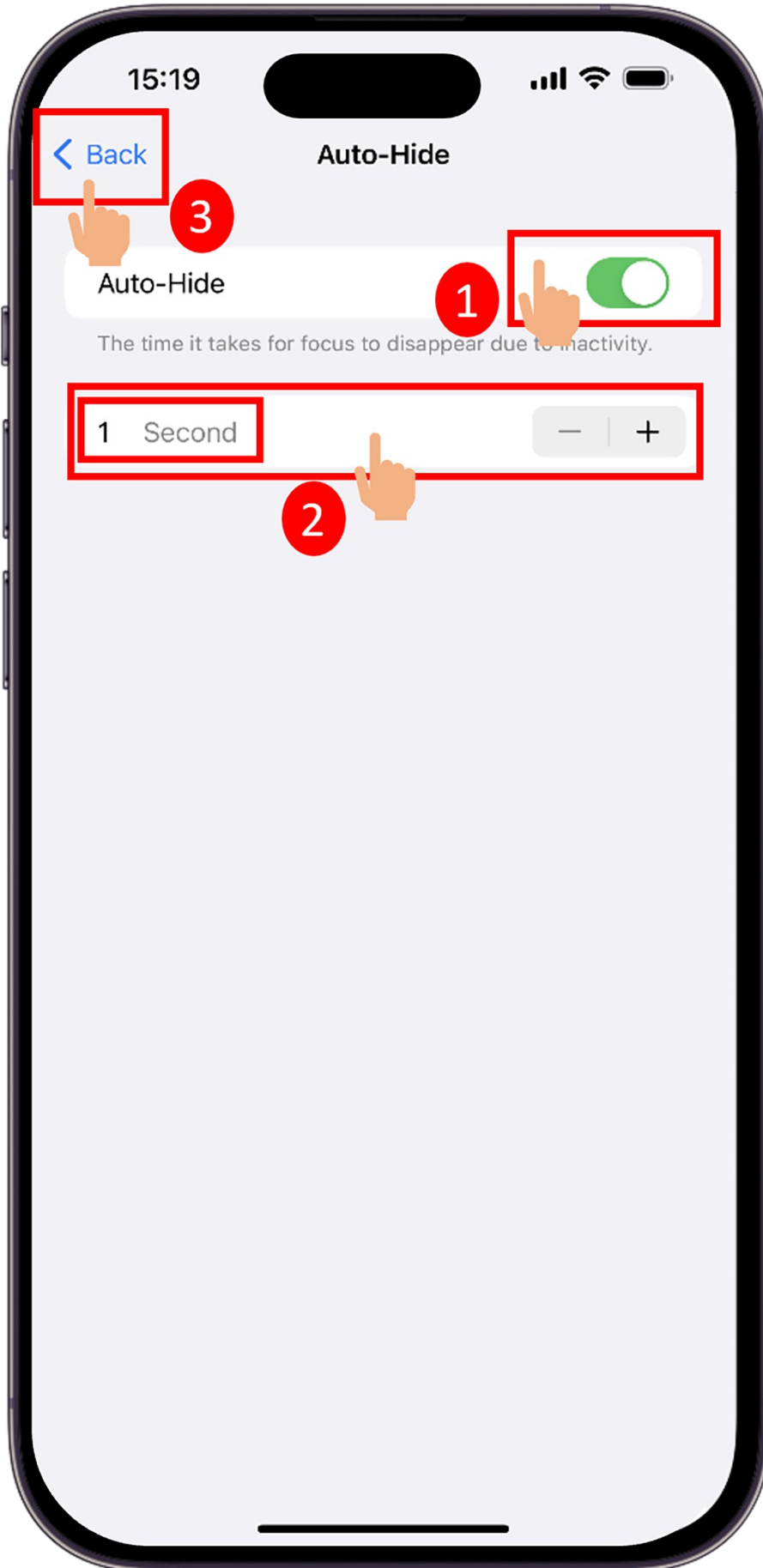
2

High Contrast



Color

Default >



15:19

< Back

Auto-Hide

Auto-Hide

The time it takes for focus to disappear due to inactivity.

1 Second

- | +

11:20

91

< Settings

Accessibility

Back to Accessibility

VISION

- VoiceOver Off >
- Zoom Off >
- Display & Text Size >
- Motion >
- Spoken Content >
- Audio Descriptions Off >

PHYSICAL AND MOTOR

- Touch >
- Face ID & Attention >
- Switch Control Off >
- Voice Control Off >
- Side Button >
- Control Nearby Devices >
- Apple TV Remote >
- Pointer Control >
- Keyboards >

HEARING

11:20

91

< Accessibility

Touch

AssistiveTouch

On >

AssistiveTouch allows you to control your iPhone if you have difficulty touching the screen. If you require an adaptive accessory.

Reachability



Swipe down on the bottom edge of the screen to bring the top into reach.

Haptic Touch >

Press on the display using a different length of time to reveal content previews, actions and contextual menus.

Touch Accommodations

Off >

If you have trouble using the touch screen, adjust the following settings to change how the screen will respond to touches.

Tap or Swipe to Wake



Wake and unlock iPhone when you tap the display or swipe up from the bottom edge of the Lock screen.

Shake to Undo

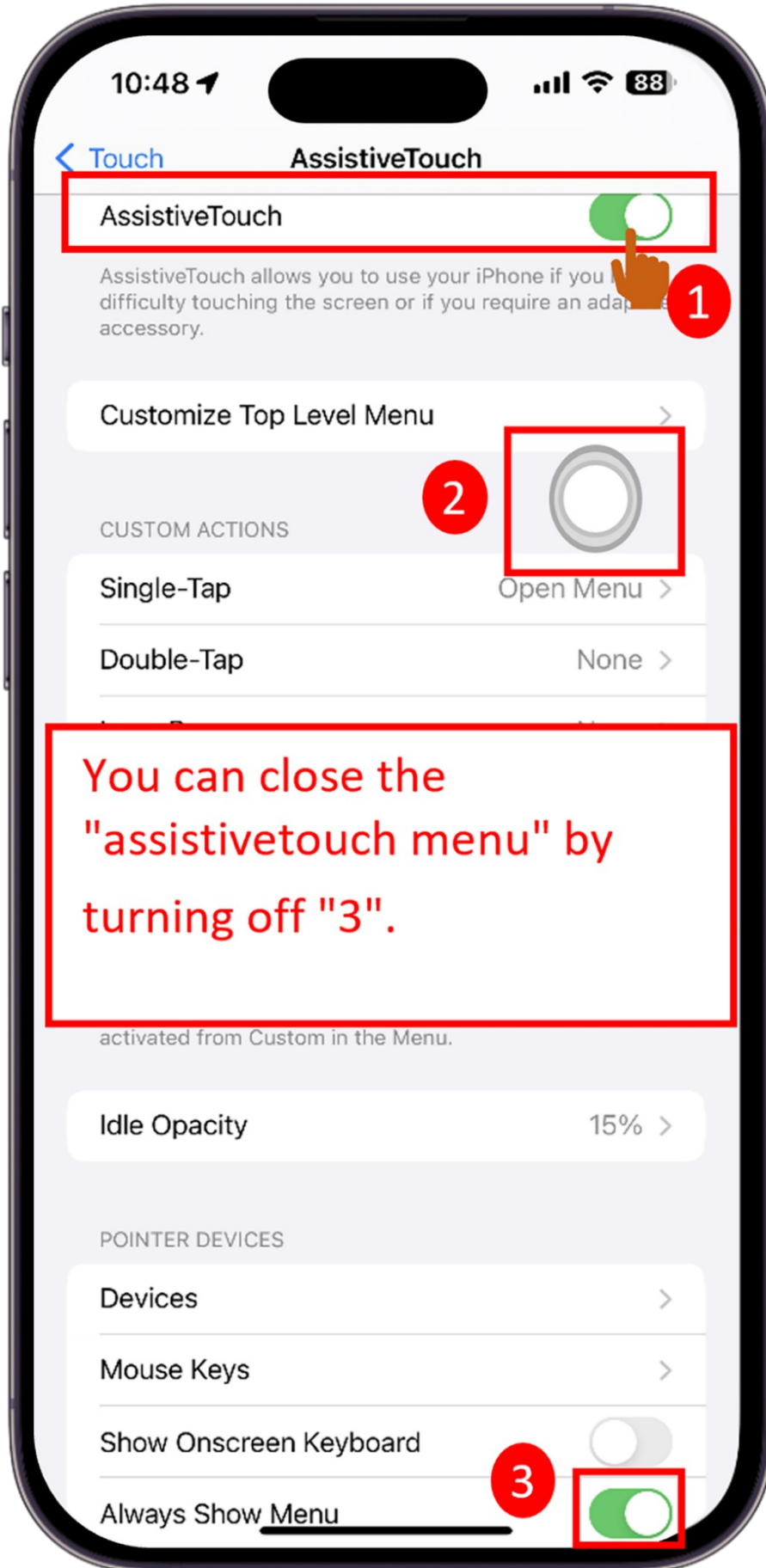


If you tend to shake your iPhone by accident, you can disable Shake to Undo to prevent the Undo alert from appearing.

Vibration



When this switch is off, all vibration on your iPhone will be disabled, including those for earthquake, tsunami and other emergency alerts.



You can close the "assistivetouch menu" by turning off "3".

10:29

< Touch

AssistiveTouch

Show Onscreen Keyboard



Always Show Menu



The AssistiveTouch menu will be hidden when a pointer device is connected.

Perform Touch Gestures



Simulate a finger when performing gestures with a pointer device. When enabled, apps may recognize some gestures differently. For example, scrolling may be preferred over text selection.

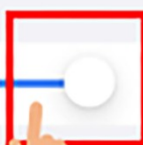
Use Game Controller



Allow AssistiveTouch to be controlled by Game Controllers.

[Learn more...](#)

TRACKING SENSITIVITY



Dwell Control



Fallback Action

Tap >

Movement Tolerance



Hot Corners



2.00 Seconds



When Dwell Control is enabled, holding the cursor still for the specified amount of time will perform the selected dwell action.

11:20

✈️ 📶 91%

< Touch

AssistiveTouch

AssistiveTouch



AssistiveTouch allows you to use your iPhone if you have difficulty touching the screen or if you require an adaptive accessory.

Customize Top Level Menu >

CUSTOM ACTIONS

Single-Tap

Open Menu >

Double-Tap

Notification Center >

Long Press

None >

Custom actions allow you to interact directly with the AssistiveTouch icon without opening the menu.

CUSTOM GESTURES

Create New Gesture... >

Custom gestures allow you to record gestures that can be activated from Custom in the Menu.

Idle Opacity

40% >

POINTER DEVICES

Devices >

Mouse Keys

Show Onscreen Keyboard



11:20

✈️ 📶 91

< AssistiveTouch Devices

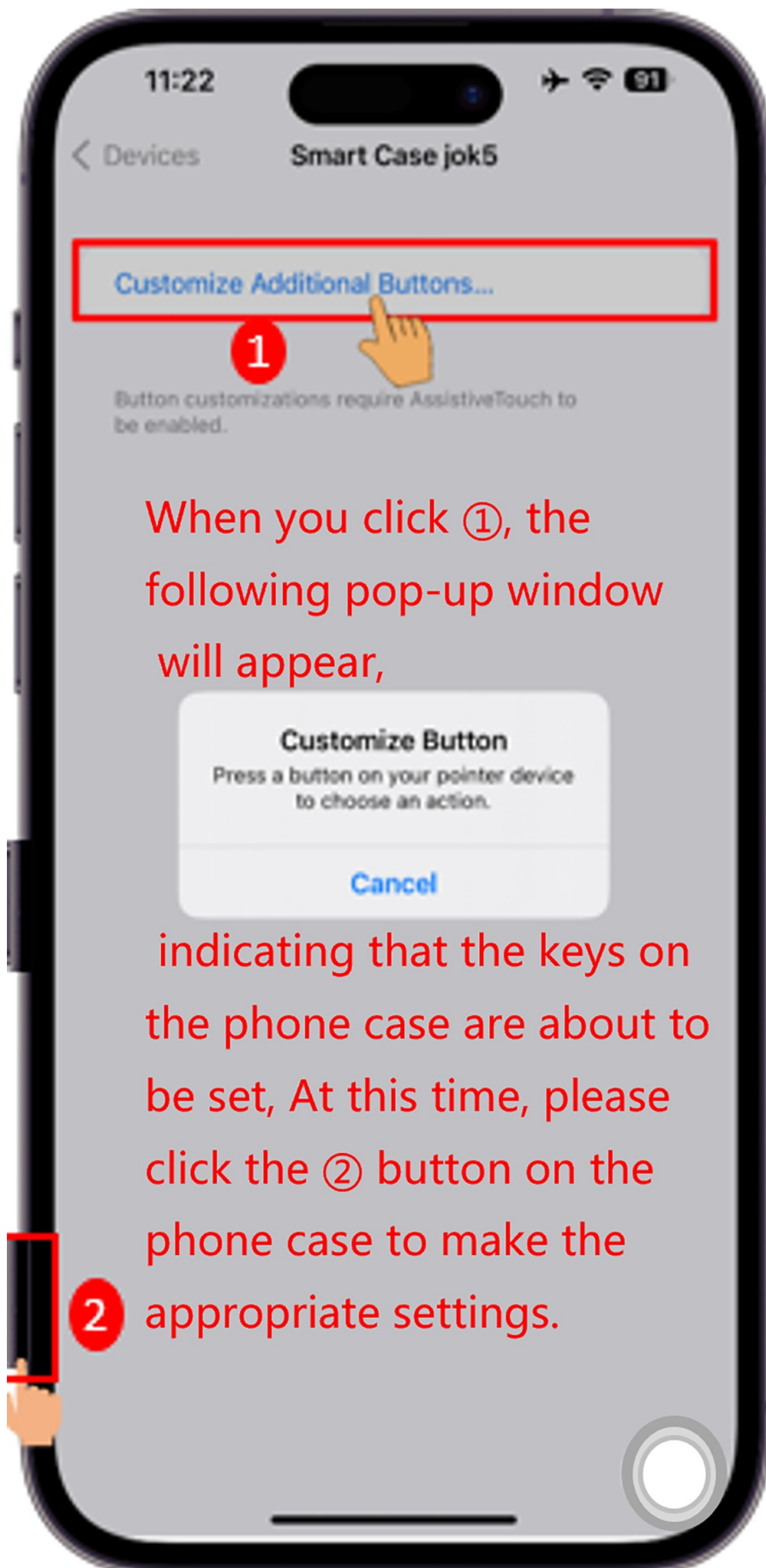
CONNECTED DEVICES

Smart Case jok5 >



Bluetooth Devices... >

AssistiveTouch allows you to connect Bluetooth and USB assistive pointer devices, such as joysticks and mice.



11:24

✈️ 📶 91

< Smart Case jok5

Button 1

SYSTEM

Non **2**

Single-Tap

Secondary Click

Open Menu

Accessibility Shortcut

Analytics

App Switcher

Camera ✓

Control Center

Double Tap **1**

Hold and Drag

Home

Lock Rotation

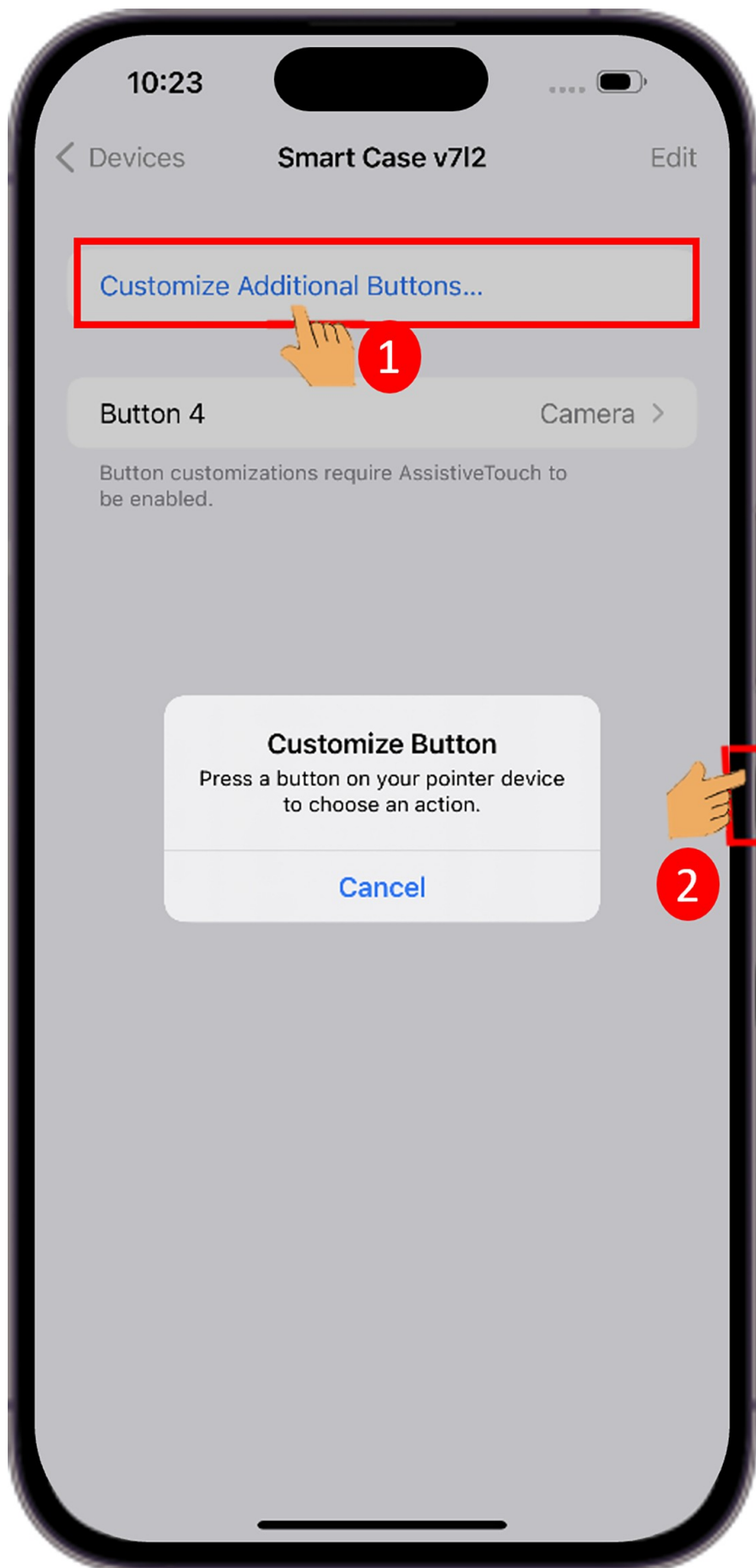
Lock Screen

Long Press

Move Menu

Mute

Notification Center



10:23

< Devices

Smart Case v712

Edit

Customize Additional Buttons...

1

Button 4

Camera >

Button customizations require AssistiveTouch to be enabled.

Customize Button

Press a button on your pointer device to choose an action.

Cancel

2

13:21



< Smart Case 4u2o Button 3

Control Nearby Devices

Detection Mode

Live Captions

Speak Screen

SCROLL GESTURES

Continuous Scroll

Scroll Down

Scroll Left

Scroll Right

Scroll to Bottom

Scroll to Top

Scroll Up



DWELL CONTROLS

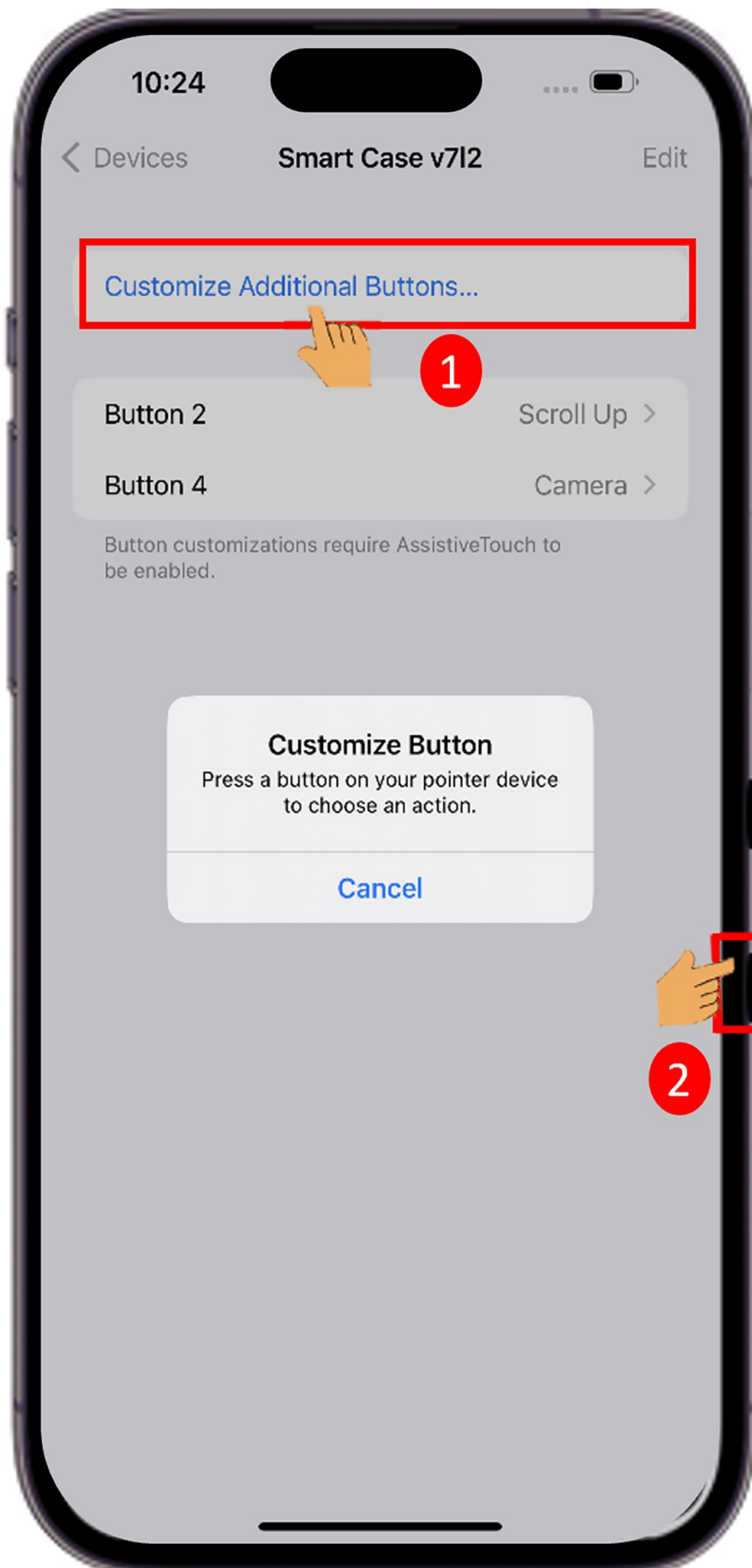
Enable/Disable Fallback

Move Menu

Tap

Toggle Pause/Resume Dwell





10:24

< Devices

Smart Case v712

Edit

Customize Additional Buttons...

Button 2

Scroll Up >

Button 4

Camera >

Button customizations require AssistiveTouch to be enabled.

Customize Button

Press a button on your pointer device to choose an action.

Cancel

2

13:21



< Smart Case 4u2c Button 2

Control Nearby Devices

Detection Mode

Live Captions

Speak Screen

SCROLL GESTURES

Continuous Scroll

Scroll Down

Scroll Left

Scroll Right

Scroll to Bottom

Scroll to Top

Scroll Up

DWELL CONTROLS

Enable/Disable Fallback

Move Menu

Tap

Toggle Pause/Resume Dwell



2



1

13:22



< Devices

Smart Case 4u2o

Edit

Customize Additional Buttons...

Button 2

Scroll Down >

Button 3

Scroll Up >

Button 4

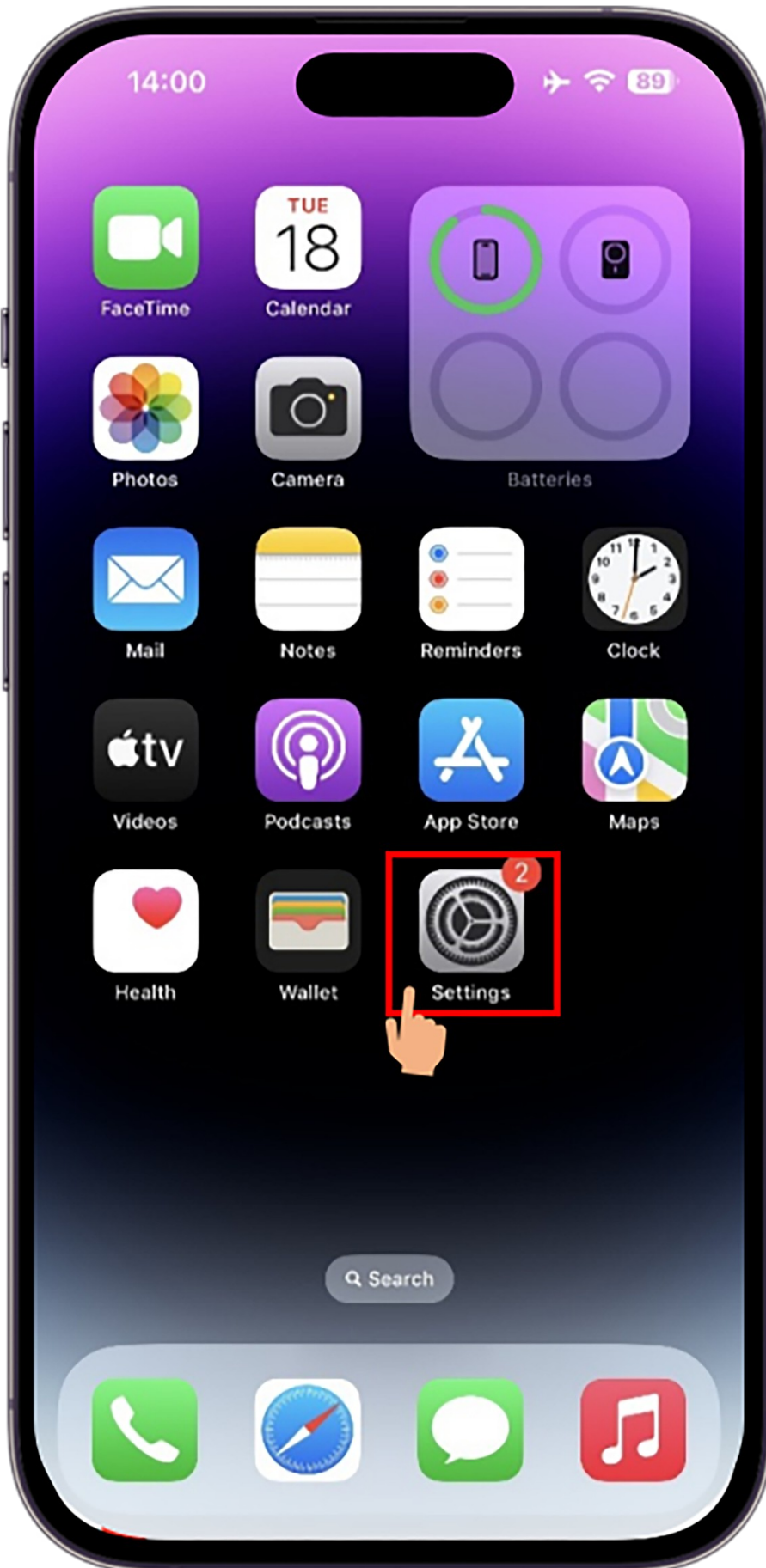
Camera >

Button customizations require AssistiveTouch to be enabled.

Complete

2





Selective configuration (I)





15:52












Settings

-  Notifications >
-  Sounds & Haptics >
-  Focus >
-  Screen Time >

-  General >
-  Control Center >

-  **Display & Brightness** >

-  Home Screen >
-  Accessibility >
-  Wallpaper >
-  Siri & Search >
-  Face ID & Passcode >
-  Emergency SOS >
-  Exposure Notifications >
-  Battery >
-  Privacy & Security >

15:52



< Settings

Display & Brightness

Text Size >

Bold Text



BRIGHTNESS



True Tone



Automatically adapt iPhone display based on ambient lighting conditions to make colors appear consistent in different environments.

Night Shift

Off >

Auto-Lock

30 seconds >

Raise to Wake



Always On Display

On >

Always On Display dims the Lock Screen while keeping information like time, widgets, and notifications visible using minimal power.

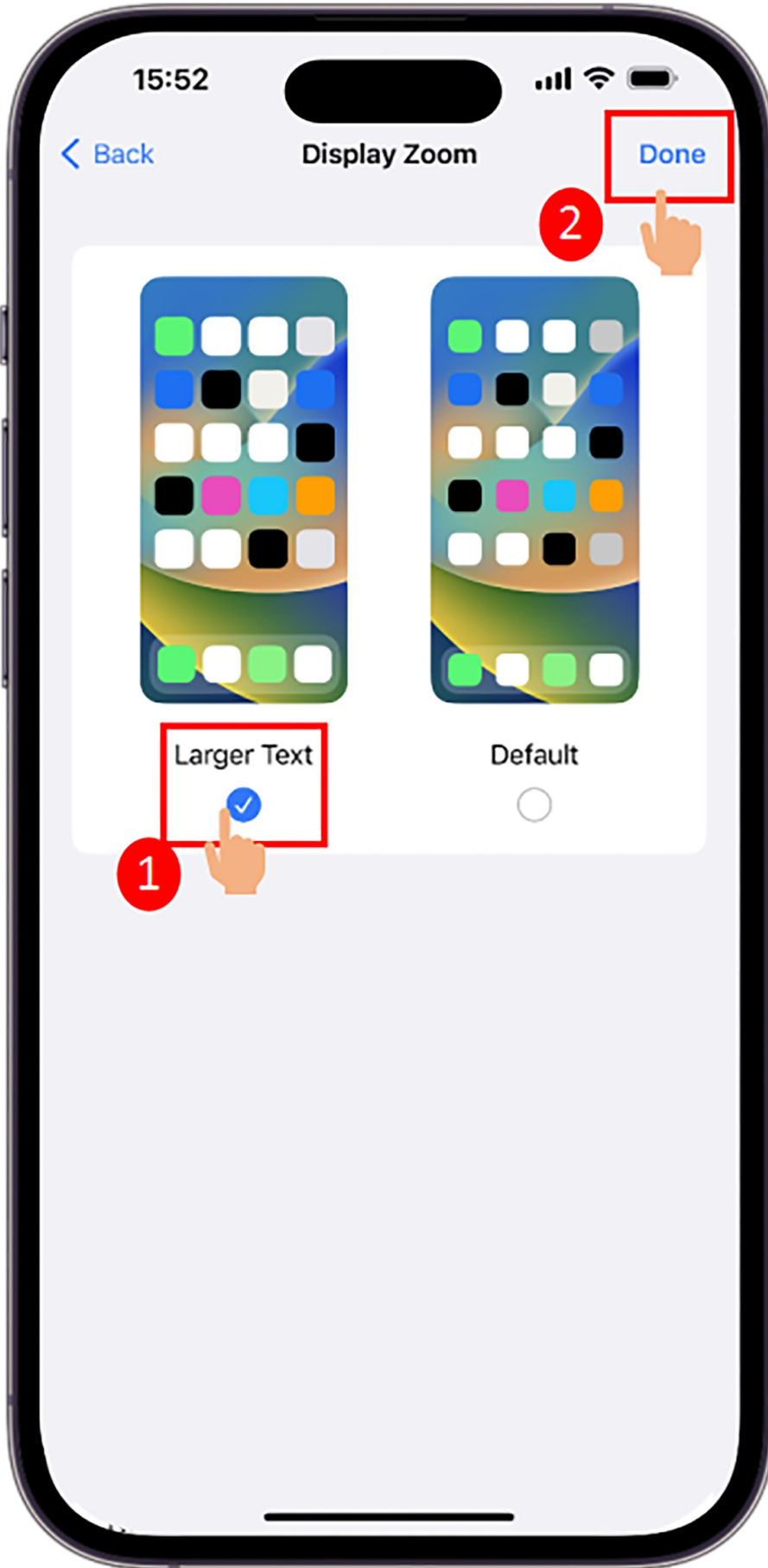
DISPLAY

Display Zoom

Default >

Choose a view for iPhone. Larger Text shows larger controls. Default shows more content.





15:52



< Back

Display Zoom

Done

2



Larger Text

Default

1



15:52



< Back

Display Zoom

Done



Larger Text



Default



Changing Display Zoom will restart iPhone.

Use Zoomed

Cancel

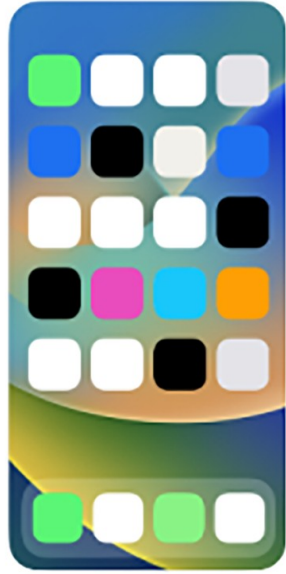
15:53



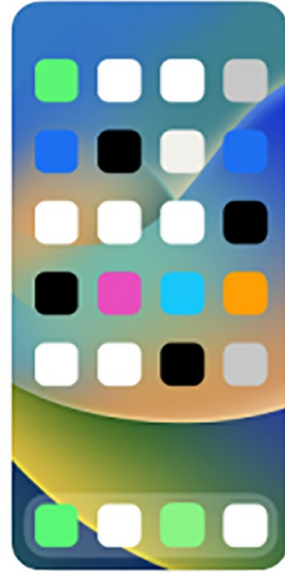
< Back

Display Zoom

Done



Larger Text



Default



11:03

✈️ 📶 93

When the phone switches to the "Larger Text" display, the corresponding Settings should be made for the phone case:

1. Press and hold keys ② and ③ for 8 seconds to switch the phone case to "Larger Text" mode.

2. After setting the phone back to "Default" mode, press and hold keys ② and ④ for 8 seconds to switch the phone case to "Default" mode operation.

1

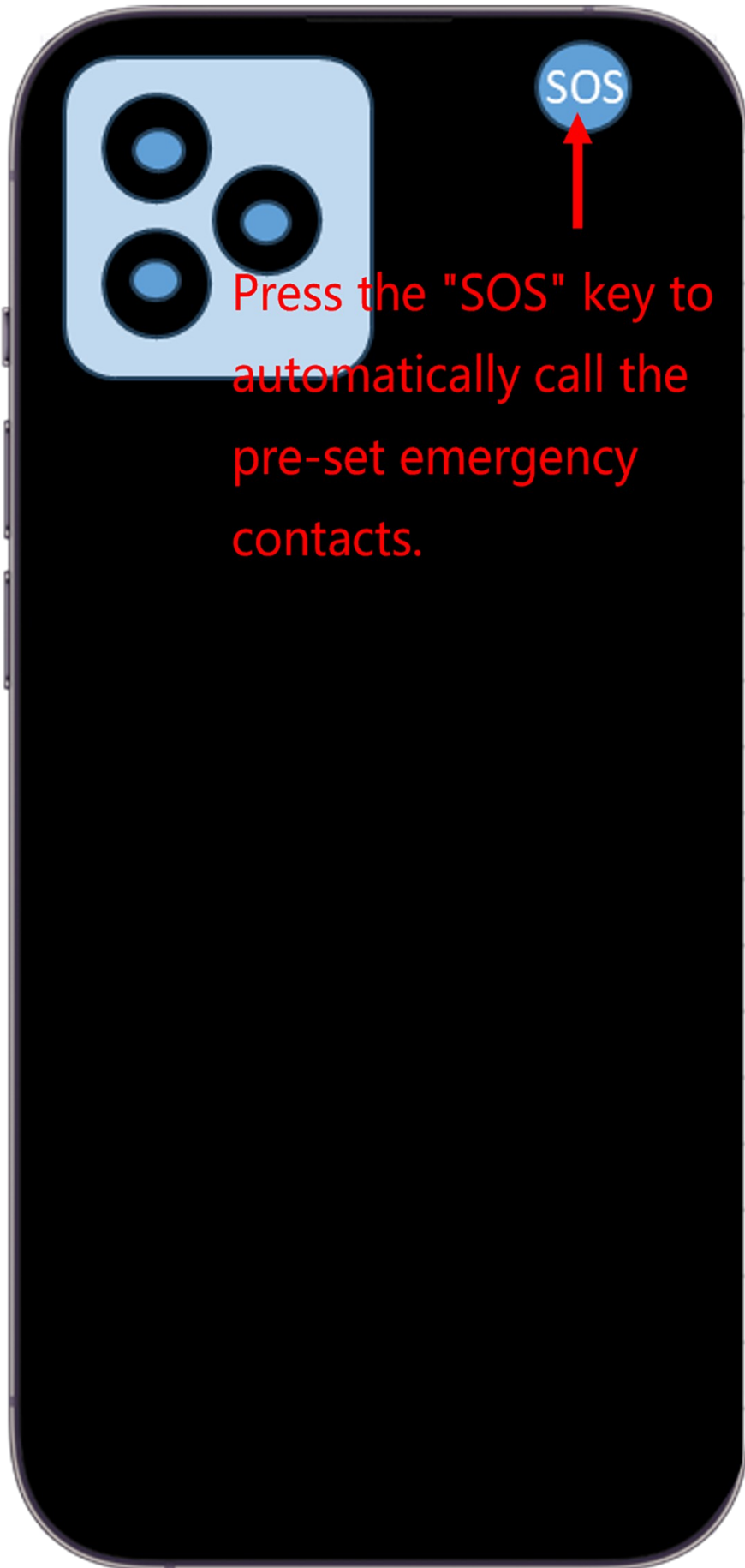
2

3

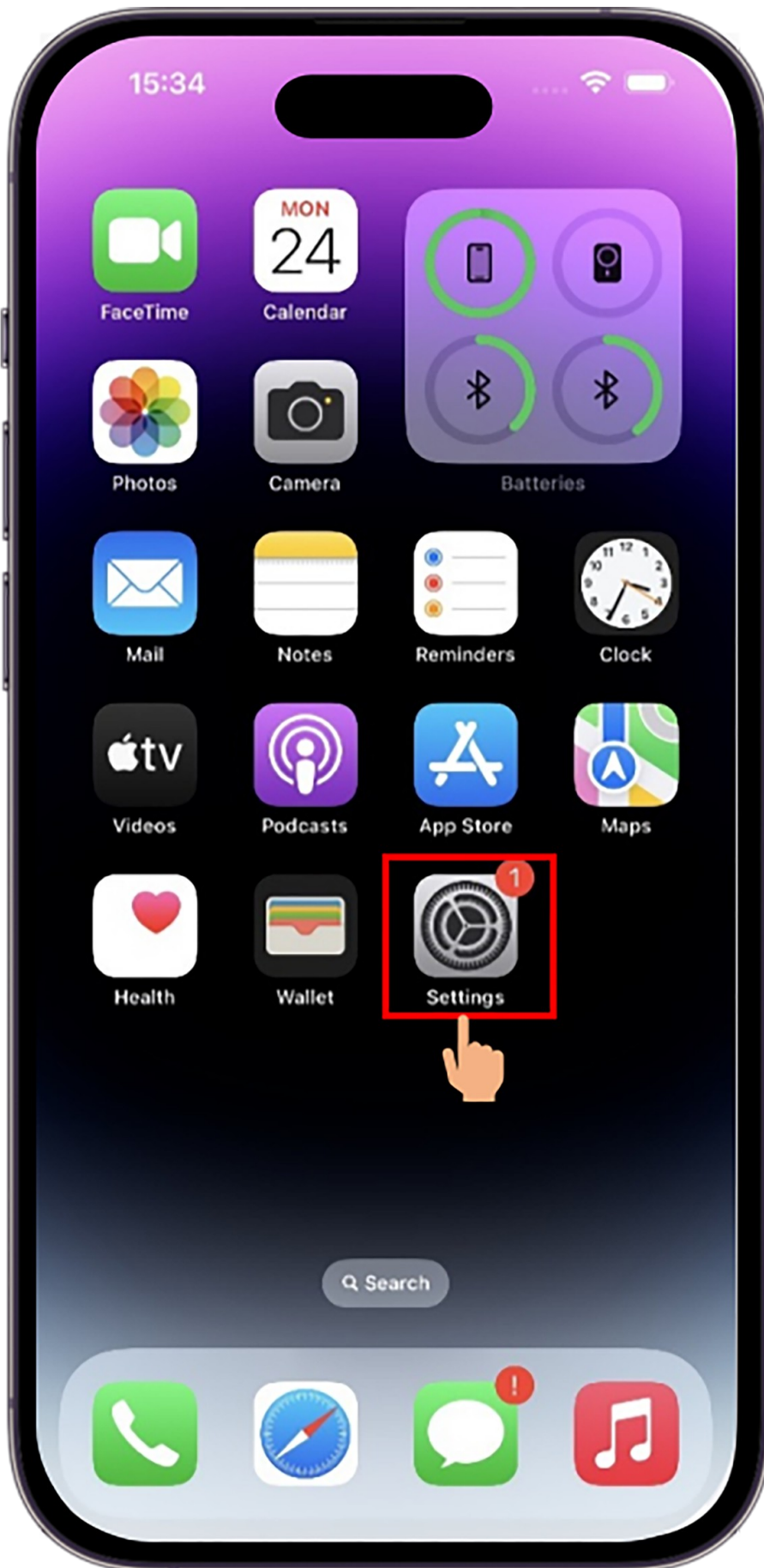
4

3

Selective configuration (II)



Press the "SOS" key to automatically call the pre-set emergency contacts.



15:34



Settings

 Control Center >

 Display & Brightness >


 Home Screen >

 Accessibility >

 Wallpaper >


 Siri & Search >


 Face ID & Passcode >

 **SOS** Emergency SOS >

 Exposure Notifications >

 Battery >

 Privacy & Security >

 App Store >

 Wallet & Apple Pay >

 Passwords >

 Mail >

 Contacts >

 Calendar >

17:03



< Settings

Emergency SOS

need to specify an emergency service to dial. Auto Call requires a SIM card.

Call with Hold and Release

If you continuously hold the side button and either volume button, a countdown begins and an alarm sounds. After the countdown, if you release the buttons, iPhone will call emergency services.

Call with 5 Button Presses

If you rapidly press the side button five times a countdown begins and an alarm sounds. When the countdown ends, iPhone will call emergency services.

Call Quietly

Warning alarms, flashes, and VoiceOver audio will be silenced when using "Hold and Release" or "5 Button Presses" to place an emergency call.

CRASH DETECTION

Call After Severe Crash

If you're in a car crash, iPhone can automatically call emergency services. iPhone will start a countdown and sound an alarm before the call.

iPhone cannot detect all crashes.

[Set up Emergency Contacts in Health](#)

Emergency SOS will notify emergency contacts with messages that say you have called emergency services. These messages also include your current location. You can set up emergency contacts for Emergency SOS in your Medical ID in the Health app.

[About Emergency SOS & Privacy](#)

17:03



< Health

* Medical ID

A Medical ID provides medical information about you that may be important in an emergency, like allergies and medical conditions.

The Medical ID can be accessed from the emergency dialer without unlocking your phone.

Create Medical ID



15:52



Cancel

* Medical ID

Done

Medications

None listed

- + add blood type
- + add organ donor
- + add weight
- + add height
- + add primary language

Emergency Contacts

+ add emergency contact

Your emergency contacts will receive a message saying that you have called emergency services when you use Emergency SOS. Your current location will be included in these messages.

Emergency Access

Show When Locked



Your Medical ID can be viewed when iPhone is locked by tapping Emergency, then Medical ID.

Delete Medical ID

15:36



< Lists

iCloud

Cancel

Search

Sam



Selecting an
emergency contact

15:36



Cancel

Relationship

mother

father

parent

brother

sister

son

daughter

child

friend

spouse

partner

assistant

manager

other

roommate

doctor

emergency

family member



Selecting
relationship

17:16



Cancel

* Medical ID

Next



Allergies & Reactions

None listed

Medications

None listed

- + add blood type
- + add organ donor
- + add weight
- + add height
- + add primary language

Emergency Contacts

- brother | Sam
- + add emergency contact

Your emergency contacts will receive a message saying that you have called emergency services when you use Emergency SOS. Your current location will be included in these messages.

Emergency Access

Show When Locked



Your Medical ID can be viewed when iPhone is locked by tapping Emergency, then Medical ID.

17:16



< Back

* Medical ID

Done

Emergency Contacts

brother

Sam

When you use Emergency SOS to call emergency services, it also sends a message with your current location to your emergency contacts with a mobile number. [Learn More about Emergency SOS](#)

Emergency Access

Show When Locked

Enabled

Your Medical ID can be viewed when iPhone is locked by tapping Emergency, then Medical ID.

17:22



< Health

* Medical ID

Edit

Emergency Contacts

brother

Sam

When you use Emergency SOS to call emergency services, it also sends a message with your current location to your emergency contacts with a mobile number. [Learn More about Emergency SOS](#)

Emergency Access

Show When Locked

Enabled

Your Medical ID can be viewed when iPhone is locked by tapping Emergency, then Medical ID.

Complete