

What's in the Packaging Box of TE Air?

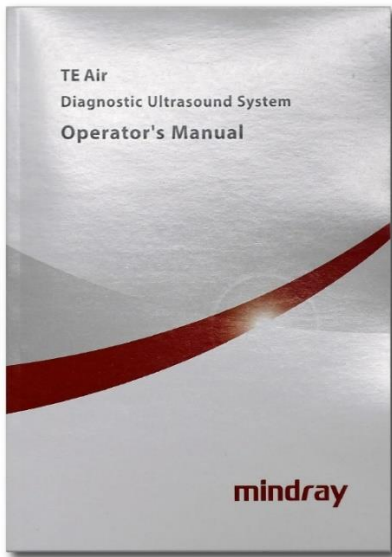
1. After you receiving the packaging box of TE Air, please check the integrity as shown below:



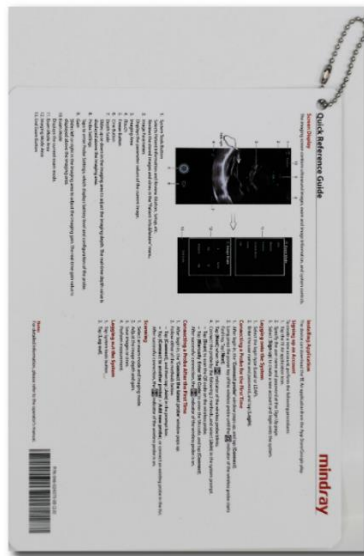
2. Open the packaging box of TE Air. You can see a piece of packing list and a transparent seal bag above the first-layer paper card.



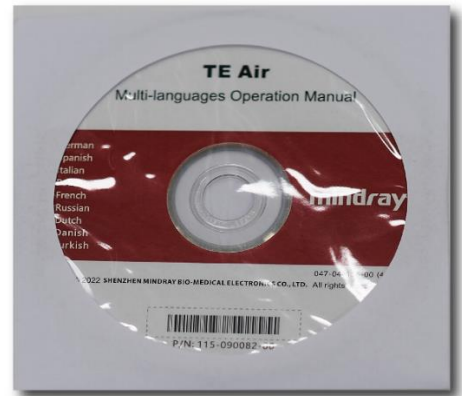
3. The transparent seal bag contains the following items:



Operator's Manual

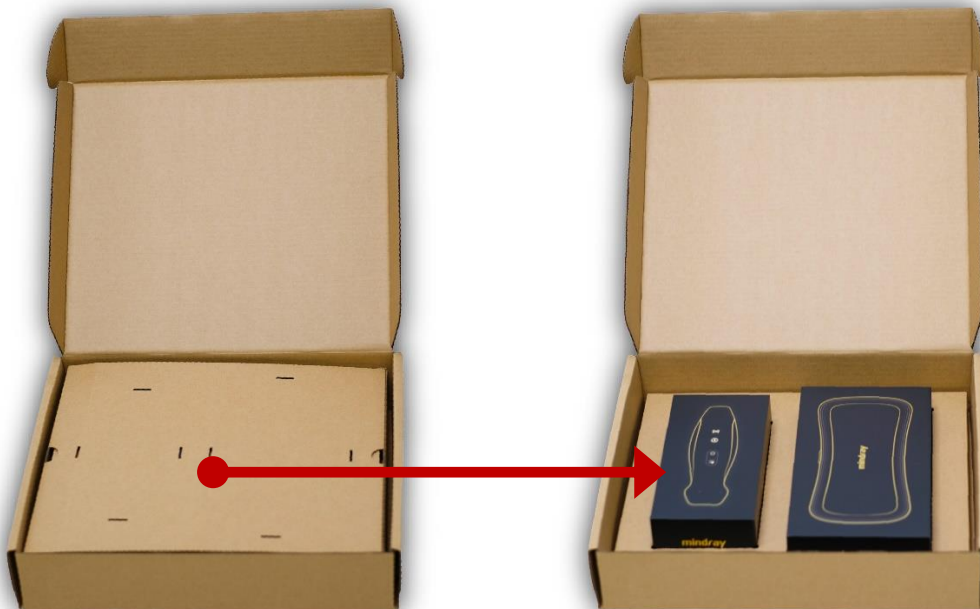


Quick Reference Guide



Multi-language Operator's Manual recorded in CD

4. Remove the first-layer paper card. The lower layer contains a Wireless Probe packaging box and an Air Capsule packaging box.



5. The Wireless Probe packaging box and Air Capsule packaging box are shown as below:



Wireless Probe Packaging Box



Air Capsule Packaging Box
(Optionally Configurable)

6. Open the Wireless Probe packaging box. The list is as follows:



Wireless Probe



Wireless Probe Charging Cable



Wireless Probe Quick Reference Guide



Packing List

7. Open the Air Capsule packaging box (Optionally Configurable). The list is as follows:



Air Capsule



Charging cable of the Air Capsule

8. You can search for and download the “TE Air” application from the App Store/Google play.

Note: The pictures displayed in this document are for illustration only. The actual purchase shall prevail.