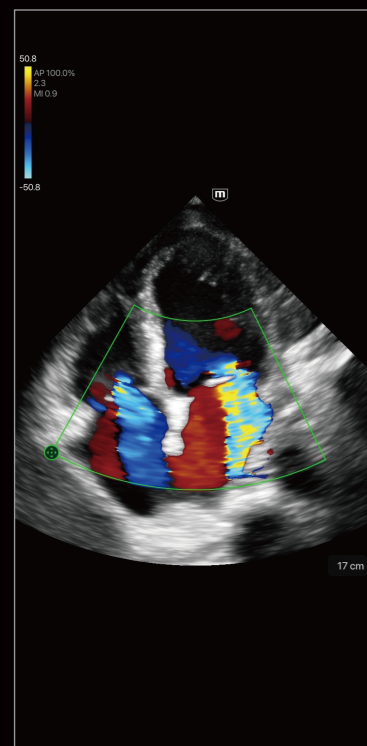
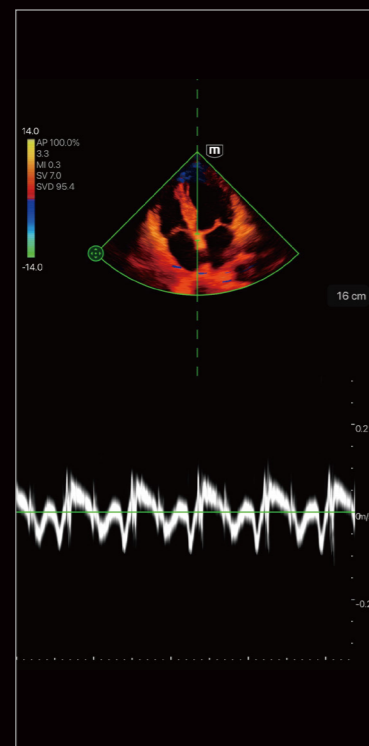


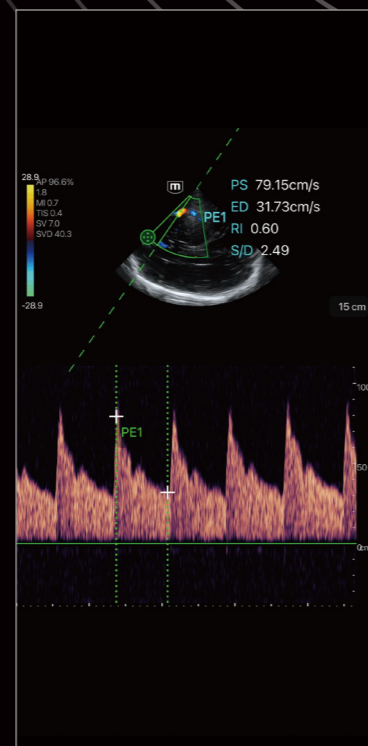
Clinical Image



Mitral and Tricuspid Regurgitation



Tissue Doppler



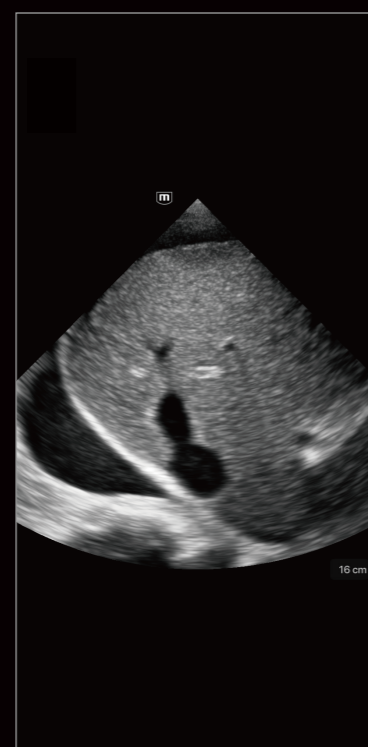
Transcranial Doppler



Dilated Cardiomyopathy



Pleural Effusion



Ascites



TE Air

Wireless Handheld Ultrasound System

Innovation Untethered



www.mindray.com

P/N:ENG-TE Air-210285X6P-20240131
©2024 Shenzhen Mindray Bio-Medical Electronics Co.,Ltd. All rights reserved.

mindray
healthcare within reach

mindray



Point-of-care Ultrasound (POCUS) has been established as an essential imaging technique for fastpaced environments. As clinical applications of POCUS expand, the demand for high-quality portable ultrasound devices increases.

TE Air, the new generation wireless handheld ultrasound system from Mindray, is designed to meet these higher clinical requirements. By combining premium capabilities with a wireless experience, efficient connectivity, and a robust design for unpredictable environments, the TE Air helps to improve clinicians' confidence and efficiency in unprecedented ways.

Untethered, with Extreme Usability

To tackle the challenges of variable mobile clinical scenarios, the TE Air is designed with high-level disinfection tolerance, extended battery life, and extreme mobility.

Durability for cleaning and disinfection

- IP68 level waterproof and dustproof design
- The high-quality materials in the TE Air make it compatible with a wide range of disinfectants

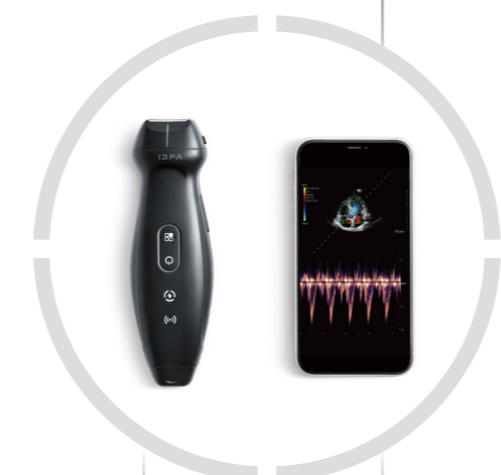


Ease for a full-day's work



Air Capsule:

- Protection case, also a portable charger
- Air Capsule supports wireless charging
- A fully charged Air Capsule could support the TE Air for all-day use



Limit your downtime

TE Air supports 35 min fast charging

Magnetic socket:

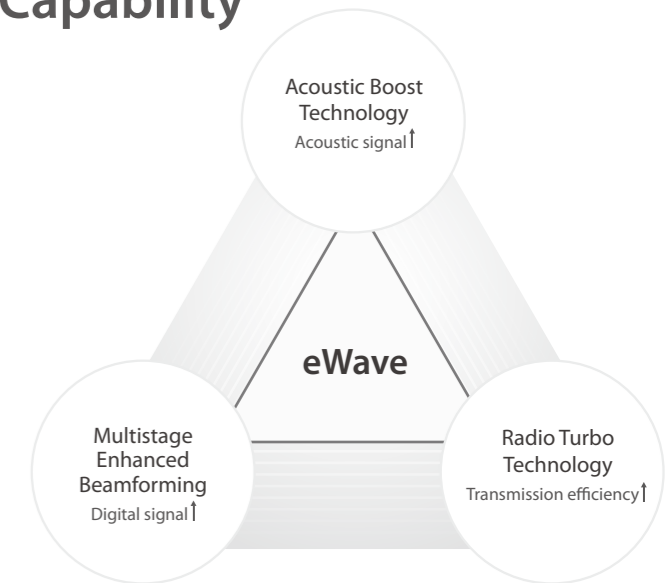
Mount and charge without dragging damage

Untethered, with Premium Capability

Powered by eWave platform and 2nd generation Single Crystal technology, the TE Air delivers high-quality images with low power consumption for accurate decision-making.

Confident performance with every scan

- Various scanning modes: B-mode, M-mode, Color Doppler, Power Doppler, PW Doppler, and Tissue Doppler Imaging
- Dedicated presets: Cardiac, Abdomen, Lung, TCI, etc.
- Smart Bladder: Automatically calculates bladder volume
- AutoEF: Automatically calculates left heart function, including EDV, ESV, EF



TE Air App, a professional ultrasound system on smart devices



- Intuitive user interface designed for ease of use
- The one-hand operation on App brings high efficiency
- Offers patient data management solutions
- Seamless interconnectivity with hospital information system to complete the department's workflow

More connectable possibilities

The TE Air can connect with more advanced devices in Emergency Medical Service, Emergency, Critical Care, etc.

- The TE Air could work with iOS or Android phones/tablets, to overcome the limitations of cords and tight spaces.
- More connected devices for the TE Air in the future

