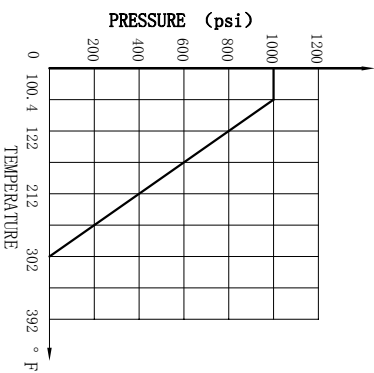
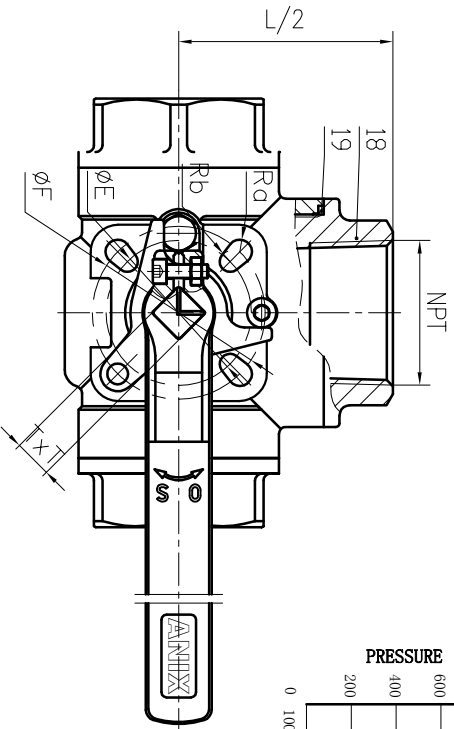
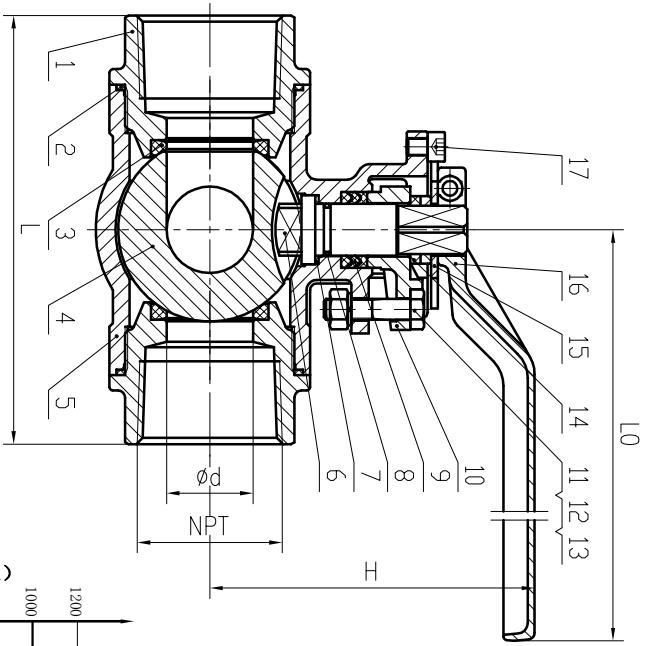


0001/4R6N/1H18B



NPS	L	d	NPT	Lo	H	E	F	a	b	TxT	Weight (lb)
1/2"	2.913	0.472	1/2"	5.118	2.756	1.417	1.654	0.118	0.118	0.354x0.354	1.422
3/4"	3.465	0.591	3/4"	5.118	2.992	1.417	1.654	0.118	0.118	0.354x0.354	2.094
1"	3.622	0.787	1"	5.906	3.406	1.654	1.969	0.118	0.138	0.433x0.433	2.976
1 1/4"	4.882	0.984	1 1/4"	5.906	3.701	1.654	1.969	0.118	0.138	0.433x0.433	5.423
1 1/2"	5.433	1.260	1 1/2"	8.268	4.528	1.969	2.756	0.138	0.177	0.551x0.551	8.267
2"	6.063	1.496	2"	8.268	5.118	1.969	2.756	0.138	0.177	0.551x0.551	10.692

Nominal pressure	1000Psi		Test medium	Water temperature	Normal temperature
	Shell test	Test			
Test pressure	10.4	7.6	Water		
Seal test	7.6	0.6	Air		
Gas seal test	0.6				
Applicable medium	Water, Oil, Gas				
Applicable temperature	-20~302°F				

- NOTE:
- Design and Manufacture for valve according to ASME B16.34.
  - Inspection and Test for valve according to API 598.
  - The connection of screwed for valve according to ANSI B1.20.1.

NO.	DESCRIPTION	Q'TY	MATERIAL
1	BONNET	1	A351 CF8M
2	GASKET	1	RP TFE
3	SEAT	4	RP TFE
4	BALL	1	SS316
5	BODY	1	A351 CF8M
6	STEM	1	A276 316
7	STEM WASHER	1	RP TFE
8	O-RING	1	NBR
9	PACKING	-	RP TFE
10	GLAND	1	CF8
11	BOLT	2	A193 B8
12	SPRING WASHER	2	304
13	NUT	2	A194 8
14	HANDLE WASHER	1	PVC
15	STOP	1	304
16	HANDLE	1	STAINLESS
17	BOLT	1	A193 B8
18	SIDE BONNET	1	A351 CF8M
19	SIDE GAKSET	1	RP TFE

MARK	BEFORE MODIFIED	AFTER MODIFIED	DATE	SCALE
DRA.		APP.		
CHK.		DATE		

<b>ANIX®</b>		ANIX VALVE USA 3 Way T Port Ball Valve 1000PSI, NPT High Mounting Pad BVH14R6N/1000