

Instruction manual

Thank you for purchasing FANTECH ZEUS X5 Macro PRO Gaming Mouse .

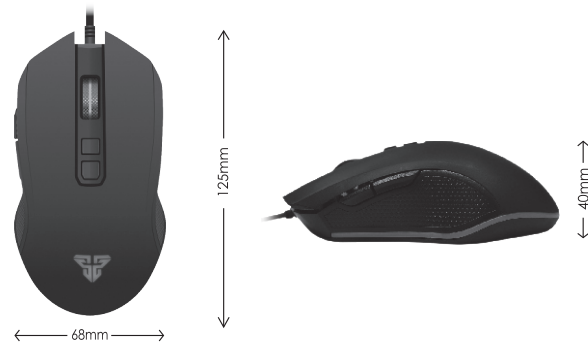
FANTECH ZEUS X5 has 10 millions switch and also support up to 4800DPI with RGB switch button, to make you pinpoint accurate and to land more killing blows when playing the game.

FANTECH ZEUS X5 is a plug and play usb interface programmable mouse, no need to install any driver for your first use. For more enhanced settings and function, you can install the software from our website www.fantechworld.com

Technical specification

- Gaming Optical Sensor
- On-the-fly Adjustable DPI (1200-2400-3200-4800)
- Speed/acceleration: 60ips/15g
- Polling rate: 125hz
- FPS: max 6000fps
- 10,000,000 Click Lifetime
- 1.8m Nylon Braided Cable
- Silicon rubber roller
- RGB Chroma Luminous light
- Size: 125mm x 68mm x 40mm

Size



ZEUS X5

MACRO PRO GAMING MOUSE

What's included in the box

1. FANTECH ZEUS X5 Macro PRO Gaming Mouse
2. User manual

System requirements

1. Operating systems: Windows XP/7/8/10; MAC OS
2. One free USB 2.0/3.0 port

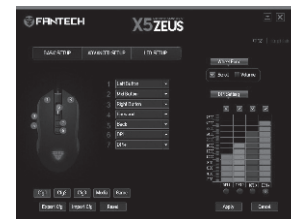
USER MANUAL

Keys function map



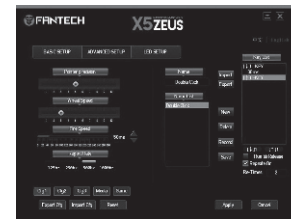
KEY	Key Function Map
1	LEFT BUTTON
2	MID BUTTON
3	RIGHT BUTTON
4	FORWARD
5	BACK
6	DPI -
7	DPI +

Software



Base setting

- * You can program your mouse button to any multimedia function and gaming function by selecting the bar on the mouse picture and select your desire command on the button assign bar.
- * You can customize your mouse DPI level on the DPI setting bar
- * Press Apply to save changes.



Advanced setting

- * You can customize your mouse pointer precision, wheel speed, fire speed and macro setting
- * Press apply to save changes.

Macro setting

* To create a new macro in settings, press "New macro" bar on the macro group bar, input the macro name and start record your macro

- Example:
- Add macro key name "ASD"
 - Press Record Button and type "ASD" then press Stop Recording
 - You can edit delay time/cycle before saving.
 - Press save/apply button to save your macro "ASD"

* To use your macro "ASD"

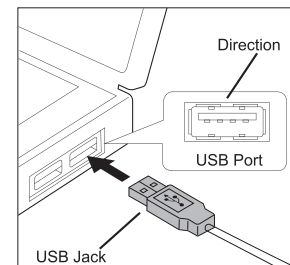
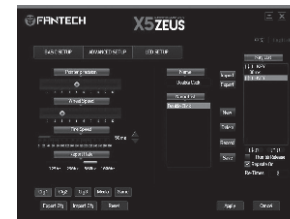
1. Go to base setup bar
2. Select button you want to apply the macro "ASD"

3. Then select Macro and select ASD
 4. Save & Apply
- Your button will be used as "ASD"

* To check your Macros

1. Go to notepad
2. Click the assigned macro button
3. It should type ASD

Note: "ASD" is just an example, you can use your own keys for macros.



How to connect

Its plug and play. Connect the mouse to computer by inserting USB jack to your computer USB port.